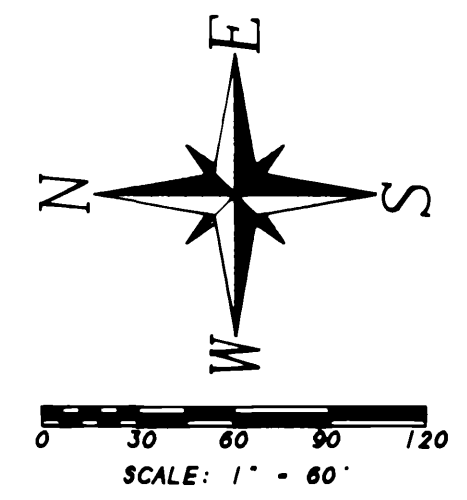


SPICE WOOD NO. 2 SUBDIVISION

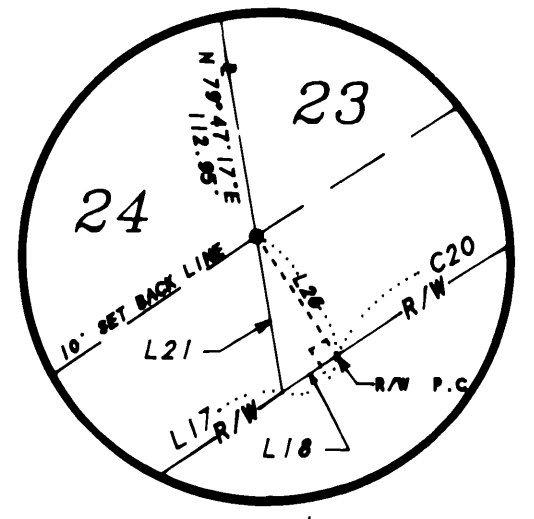
A PORTION OF THE NORTHWEST QUARTER OF THE SOUTHWEST QUARTER OF SECTION 24, TOWNSHIP 2 NORTH, RANGE 1 WEST, BOISE MERIDIAN, AND A RESUBDIVISION OF A PORTION OF SMITH ADDITION TO KUNA, KUNA CITY, ADA COUNTY, IDAHO

1995

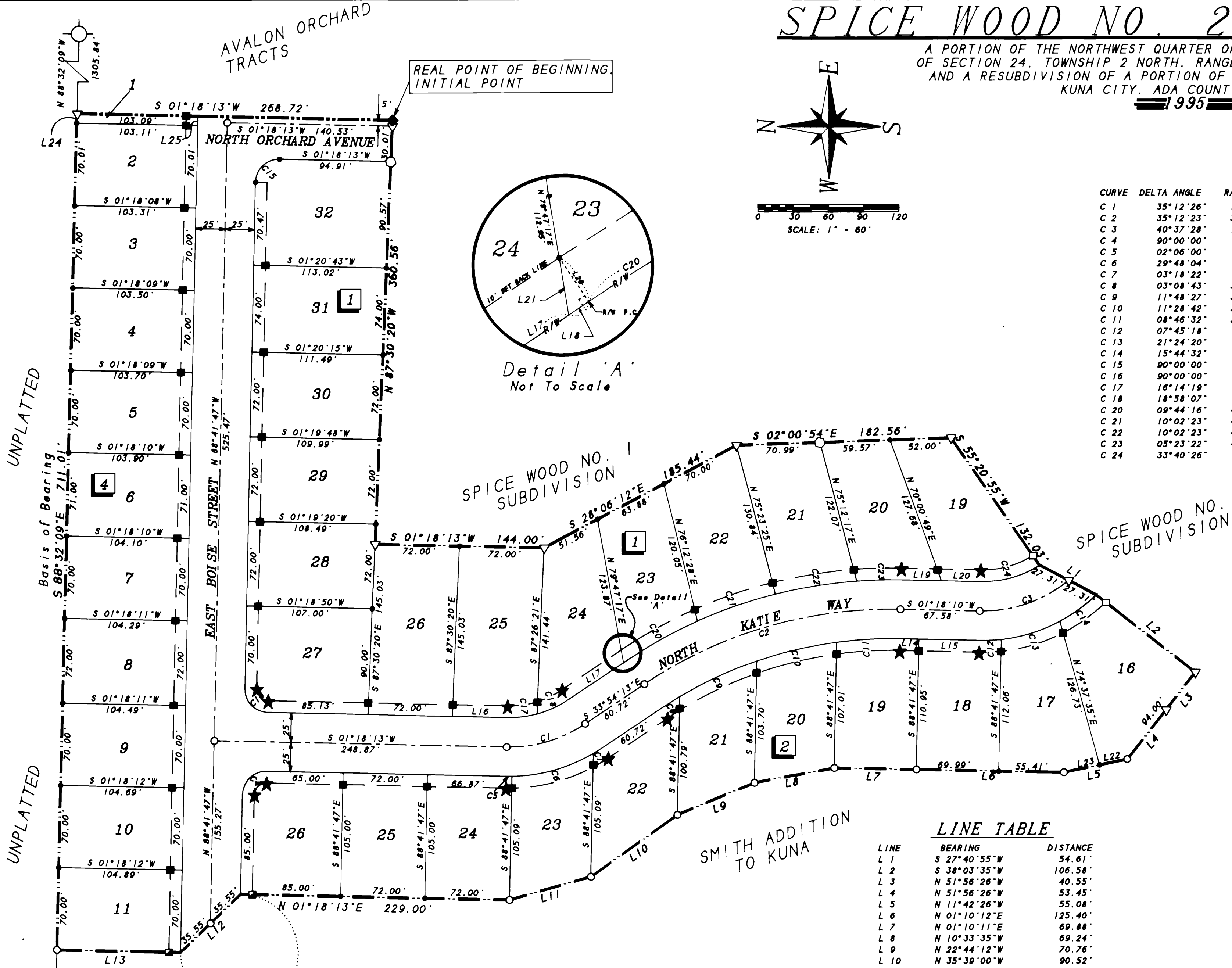


CURVE DATA

CURVE	DELTA ANGLE	RADIUS	ARC	TANGENT	CHORD	CHORD BEARING
C 1	35°12'26"	115.00'	70.67'	36.49'	69.56'	S 16°18'00"E
C 2	35°12'23"	375.00'	230.43'	118.98'	226.82'	S 16°18'01"E
C 3	40°37'28"	115.00'	81.54'	42.57'	79.84'	S 19°00'34"E
C 4	90°00'00"	20.00'	31.42'	20.00'	28.28'	S 43°41'47"E
C 5	02°06'00"	140.00'	5.13'	2.57'	5.13'	S 00°15'13"W
C 6	29°48'04"	140.00'	72.82'	37.25'	72.00'	S 15°41'49"E
C 7	03°18'22"	140.00'	8.08'	4.04'	8.08'	S 32°15'02"E
C 8	03°08'43"	350.00'	19.21'	9.61'	19.21'	S 32°19'52"E
C 9	11°48'27"	350.00'	72.13'	36.19'	72.00'	S 24°51'17"E
C 10	11°28'42"	350.00'	70.12'	35.18'	70.00'	S 13°12'43"E
C 11	08°46'32"	350.00'	53.61'	26.86'	53.55'	S 03°05'06"E
C 12	07°45'18"	140.00'	18.95'	9.49'	18.93'	S 02°34'29"E
C 13	21°24'20"	140.00'	52.30'	26.46'	52.00'	S 17°09'18"E
C 14	15°44'32"	140.00'	38.47'	19.35'	38.34'	S 35°43'44"E
C 15	90°00'00"	20.00'	31.42'	20.00'	28.28'	S 43°41'47"E
C 16	90°00'00"	20.00'	31.42'	20.00'	28.28'	S 46°18'13"W
C 17	16°14'19"	90.00'	25.51'	12.84'	25.42'	S 06°48'56"E
C 18	18°58'07"	90.00'	29.80'	15.04'	29.66'	S 24°25'09"E
C 20	09°44'16"	400.00'	67.98'	34.07'	67.90'	S 29°02'05"E
C 21	10°02'23"	400.00'	70.09'	35.13'	70.00'	S 19°08'46"E
C 22	10°02'23"	400.00'	70.09'	35.13'	70.00'	S 09°06'23"E
C 23	05°23'22"	400.00'	37.63'	18.83'	37.61'	S 01°23'31"E
C 24	33°40'26"	90.00'	52.90'	27.24'	52.14'	S 15°32'03"E



Detail A
Not To Scale



LEGEND

- SET 5/8"x30" IRON PIN WITH PLASTIC CAP - LS 4116
- SET 1/2"x24" IRON PIN WITH PLASTIC CAP - LS 4116
- WITNESS CORNER - SET 1/2"x24" IRON PIN 10" FROM LOT CORNER WITH PLASTIC CAP - LS 4116
- WITNESS CORNER - FOUND 5/8" IRON PIN 10" FROM LOT CORNER WITH PLASTIC CAP - LS 4116
- WITNESS CORNER - SET 5/8" x 30" IRON PIN 10" FROM LOT CORNER WITH PLASTIC CAP - LS 4116
- ★ REFERENCE MARK - SET 1/2"x24" IRON PIN WITH PLASTIC CAP - LS 4116
- ▽ FOUND 5/8" IRON PIN W / PLASTIC CAP LS 4116
- FOUND 1/2" IRON PIN W / PLASTIC CAP LS 4116
- 7 LOT NUMBER
- 3 BLOCK NUMBER
- SUBDIVISION BOUNDARY LINE
- - - ROAD CENTER LINE
- LOT LINE
- - - 10' SET BACK LINE
- CENTER 1/4 CORNER, SECTION 24, T.2N., R.1W., B.M., FOUND BRASS CAP - CPF8408113
- WEST 1/4 CORNER, SECTION 24, T.2N., R.1W., B.M., FOUND BRASS CAP - CPF8337500
- ◆ FOUND 2"x36" IRON PIPE WITH 5/8"x30" IRON PIN INSIDE WITH PLASTIC CAP - LS 4116

LINE TABLE

LINE	BEARING	DISTANCE
L 1	S 27°40'55"W	54.61'
L 2	S 38°03'35"W	106.58'
L 3	N 51°56'26"W	40.55'
L 4	N 51°56'26"W	53.45'
L 5	N 11°42'26"W	55.08'
L 6	N 01°10'12"E	125.40'
L 7	N 01°10'11"E	69.88'
L 8	N 10°33'35"W	69.24'
L 9	N 22°44'12"W	70.76'
L 10	N 35°39'00"W	90.52'
L 11	N 15°41'49"W	72.00'
L 12	N 44°00'10"W	71.09'
L 13	N 01°18'13"E	105.08'
L 14	S 01°18'10"W	16.48'
L 15	S 01°18'10"W	51.10'
L 16	S 01°18'14"W	46.74'
L 17	S 33°54'13"E	56.33'
L 18	S 33°54'13"E	4.39'
L 19	S 01°18'10"W	34.41'
L 20	S 01°18'10"W	33.17'
L 21	N 79°47'17"E	10.92'
L 22	N 11°42'26"W	24.00'
L 23	N 11°42'26"W	31.08'
L 24	S 88°32'09"E	8.01'
L 25	N 88°41'47"W	8.01'
L 26	N 56°05'47"E	10.00'

NOTES

1. A 12' wide public utility, drainage and irrigation easement is hereby reserved adjacent to all public streets.
2. A 5' wide public utility and drainage easement is hereby reserved adjacent to all lot lines.
3. The developer shall comply with Section 31-3805 of Idaho Code, relating to irrigation water.
4. Witness corners are set on lot lines and 10 feet from the lot corner.
5. Lot 1, Block 4 is hereby designated as common area for uses designated in the restrictive covenants for this subdivision.

