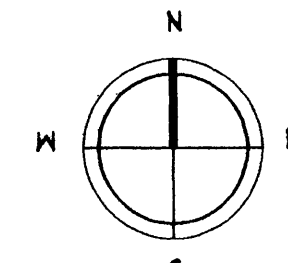


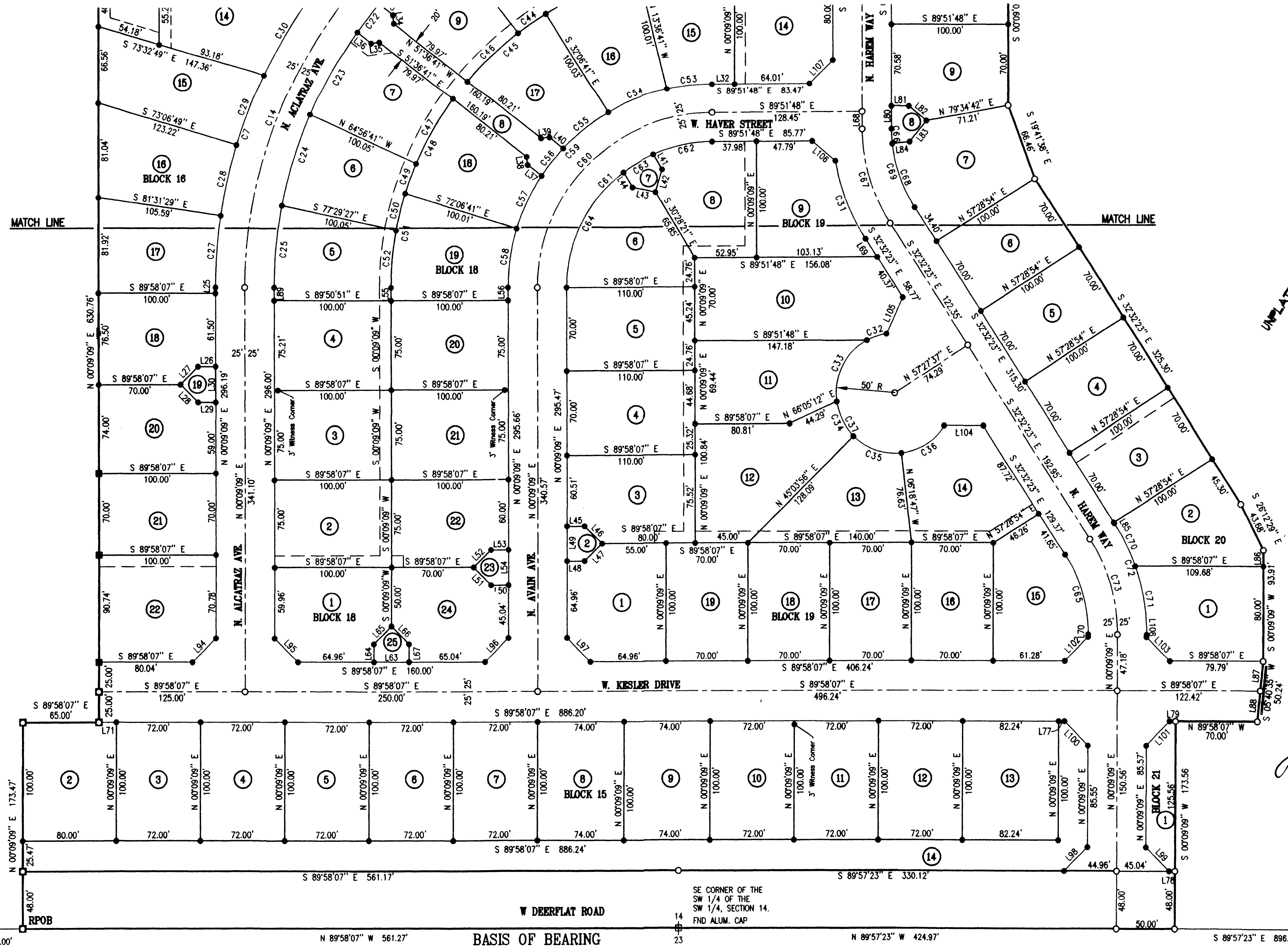
Palomar Heights No.4 Subdivision

A PORTION OF THE SOUTH HALF OF THE SOUTHWEST QUARTER OF SECTION 14, TOWNSHIP 2 NORTH, RANGE 1 WEST, BOISE MERIDIAN, KUNA CITY, ADA COUNTY, IDAHO.

2000



HORIZ. SCALE: 1"=60'



PALOMAR HEIGHTS No. 3

UNPLATTED

SECTION CORNER
FND ALUM. CAP
CPF NO. 7907145

SE CORNER OF THE
SW 1/4 OF THE
SW 1/4, SECTION 14.
FND ALUM. CAP

SOUTH 1/4 CORNER,
FND BRASS CAP
CPF NO. 97056245

