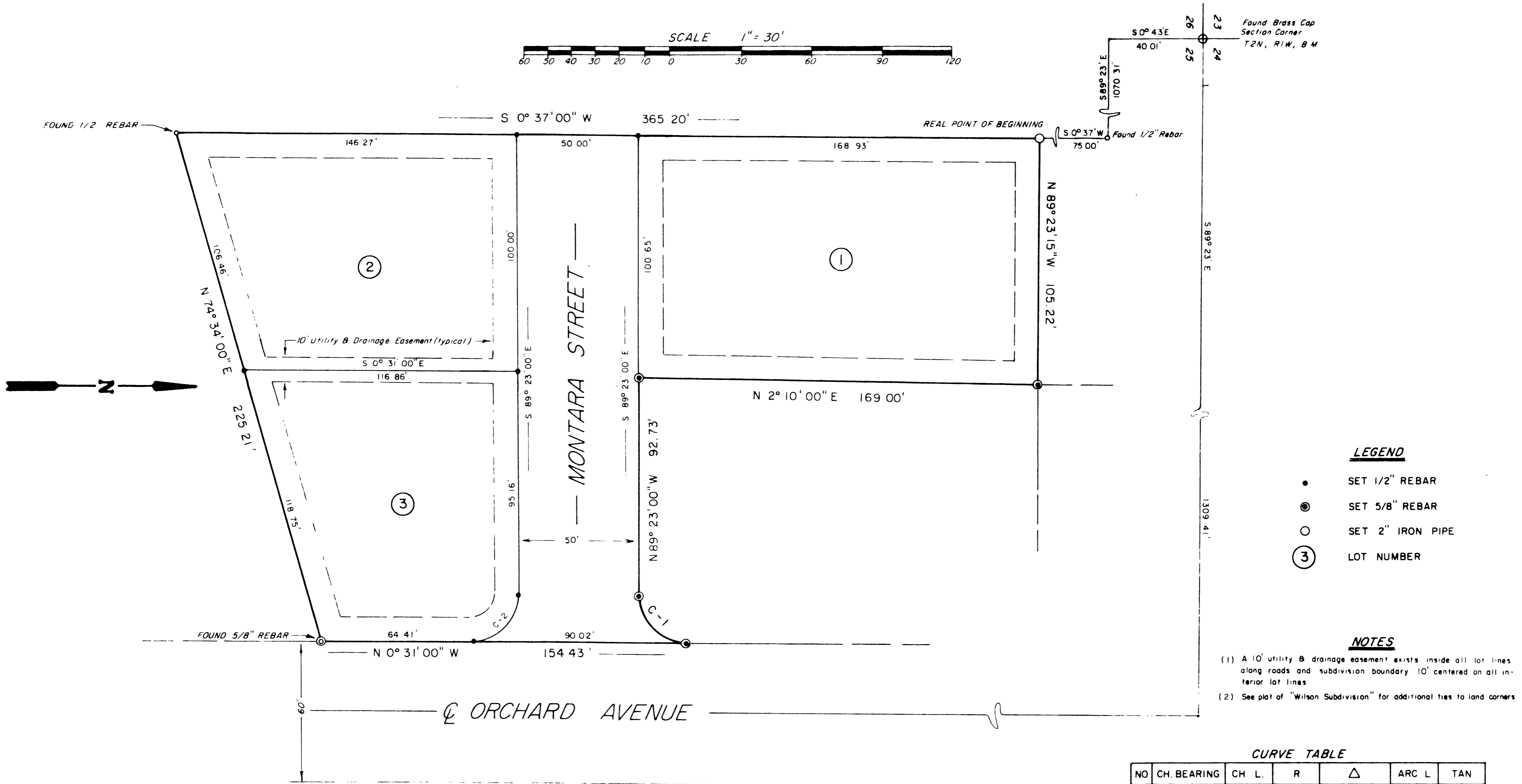


MONTARA SUBDIVISION

A RESUBDIVISION OF A PORTION OF LOT 6 OF WILSON SUBDIVISION
 SITUATED IN THE NW 1/4 OF SECTION 25, TOWNSHIP 2 NORTH, RANGE 1 WEST, BOISE MERIDIAN, ADA COUNTY, IDAHO
 ROYLANCE ENGINEERING 1982



LEGEND

- SET 1/2" REBAR
- ⊙ SET 5/8" REBAR
- SET 2" IRON PIPE
- ③ LOT NUMBER

NOTES

- (1) A 10' utility & drainage easement exists inside all lot lines along roads and subdivision boundary 10' centered on all interior lot lines
- (2) See plat of "Wilson Subdivision" for additional ties to land corners

CURVE TABLE

NO	CH. BEARING	CH L.	R	Δ	ARC L	TAN
1	S 45° 03' 00" W	28.56'	20.00'	91° 08' 00"	31.81'	20.40'
2	N 44° 57' 00" W	28.00'	20.00'	88° 52' 00"	31.02'	19.61'

