

MARTEESON MANOR NO. 2

A RESUBDIVISION OF A PORTION OF "TEED'S ADDITION TO KUNA" IN THE E² NW⁴ SE⁴ OF SECTION 23, T.2N., R.1W., B.M.

ADA COUNTY, IDAHO

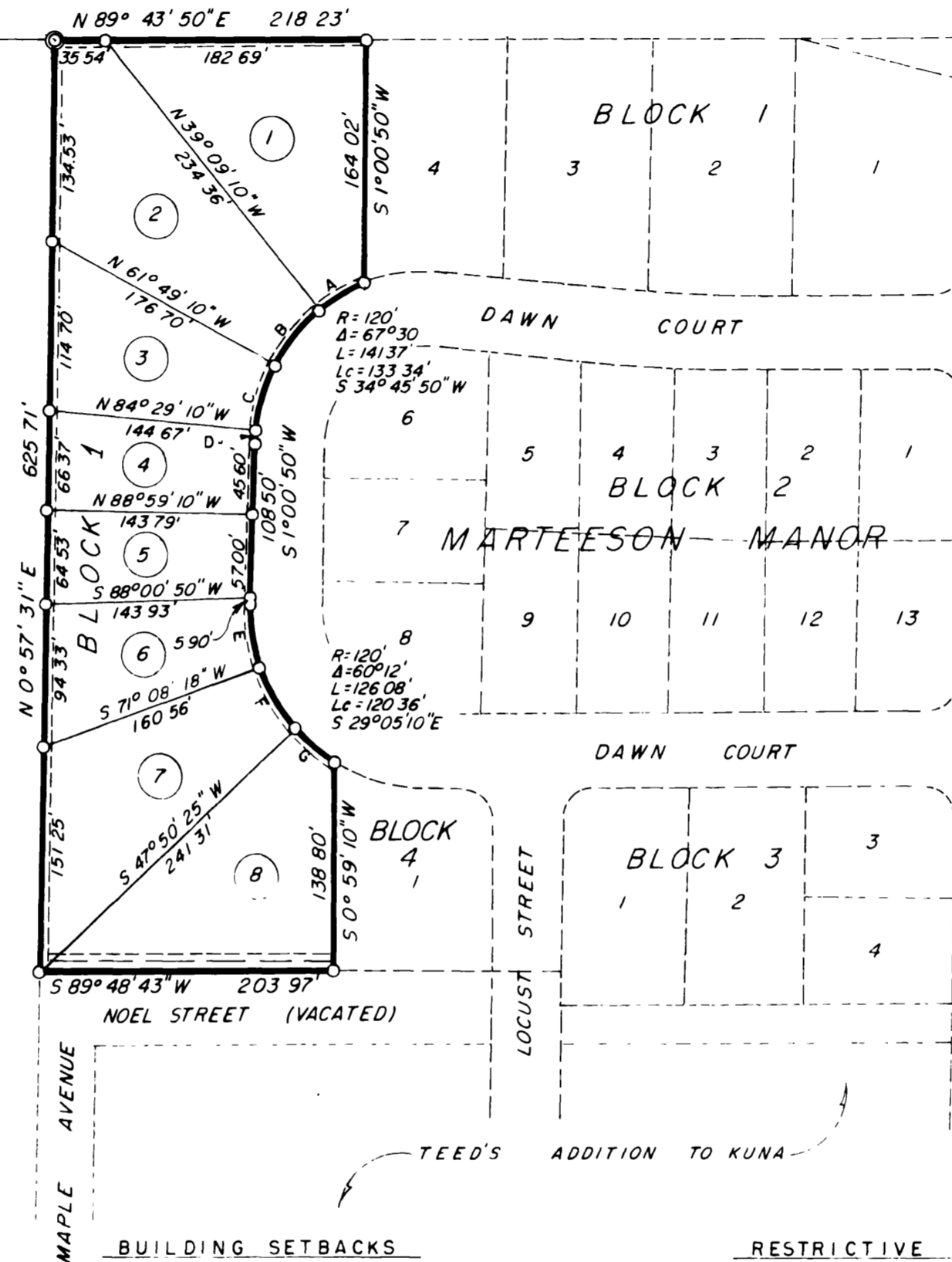
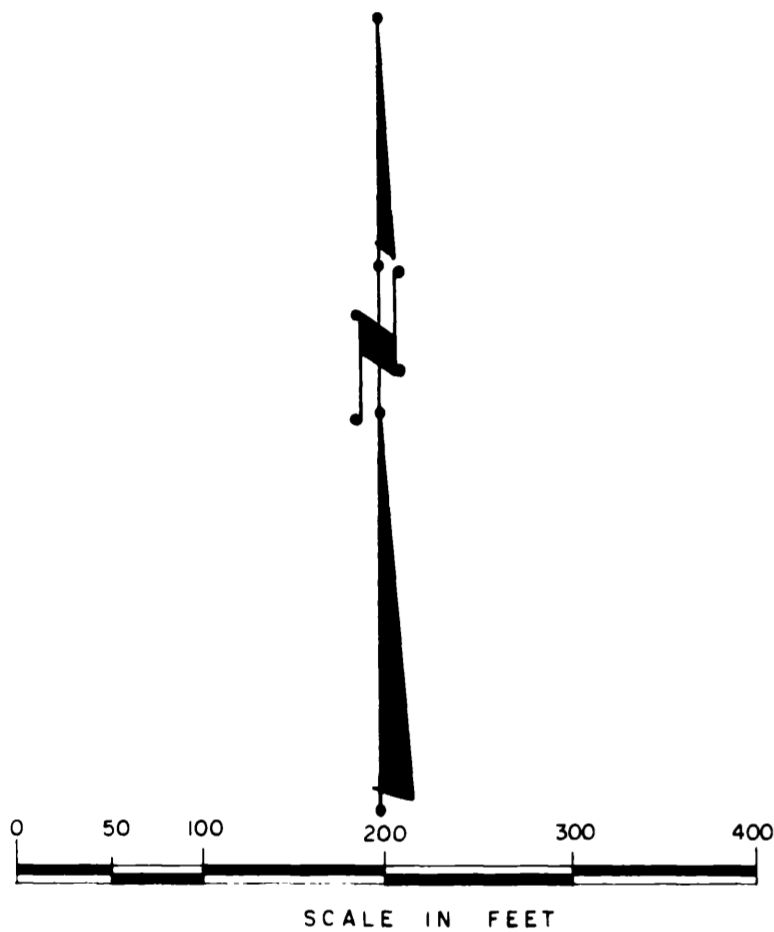
TUDOR ENGINEERING COMPANY-BOISE, IDAHO-1975

CENTER OF SECTION 23, T.2N., R.1W., B.M.
ADA COUNTY, IDAHO
(BRASS CAP)

N 89° 43' 50" E 660 18'

BUTLER SUNVIEW ESTATES

BOISE AVENUE



CURVE DATA					
CURVE	RADIUS	Δ DELTA	LENGTH	LONG CHORD	CHORD BEARING
A	120'	17° 40'	37 00'	36 86'	S 59° 40' 50" W
B	120'	22° 40'	47 47'	47 16'	S 39° 30' 50" W
C	120'	22° 40'	47 47'	47 16'	S 16° 50' 50" W
D	120'	4° 30'	9 43'	9 42'	S 3° 15' 50" W
E	120'	20° 10'	42 24'	42 02'	S 9° 04' 10" E
F	120'	23° 00' 25"	48 19'	47 86'	S 30° 39' 23" E
G	120'	17° 01' 35"	35 66'	35 53'	S 50° 40' 23" E

LEGEND

- 5/8" x 30" STEEL PINS SET AT ANGLE POINTS ON BOUNDARY. ALL OTHER POINTS ARE 1/2" x 24" STEEL PINS
- ⊙ INITIAL POINT
- ④ LOT NUMBER
- |— UTILITY, IRRIGATION, OR DRAINAGE EASEMENT
- |— TELEPHONE EASEMENT

BUILDING SETBACKS

- FRONT ——— 25 FEET
- SIDE ——— 5 FEET PER STORY
- REAR ——— 25 FEET

RESTRICTIVE COVENANTS

INSTRUMENT _____
BUILDING & OCCUPANCY SHALL CONFORM TO THE STANDARDS AS ESTABLISHED BY THE RESTRICTIVE COVENANTS FILED IN BOOK NO _____, AT PAGE NO _____, OF MISCELLANEOUS RECORDS, ADA COUNTY, IDAHO

J. Tidwell
7600599 1-8 76

