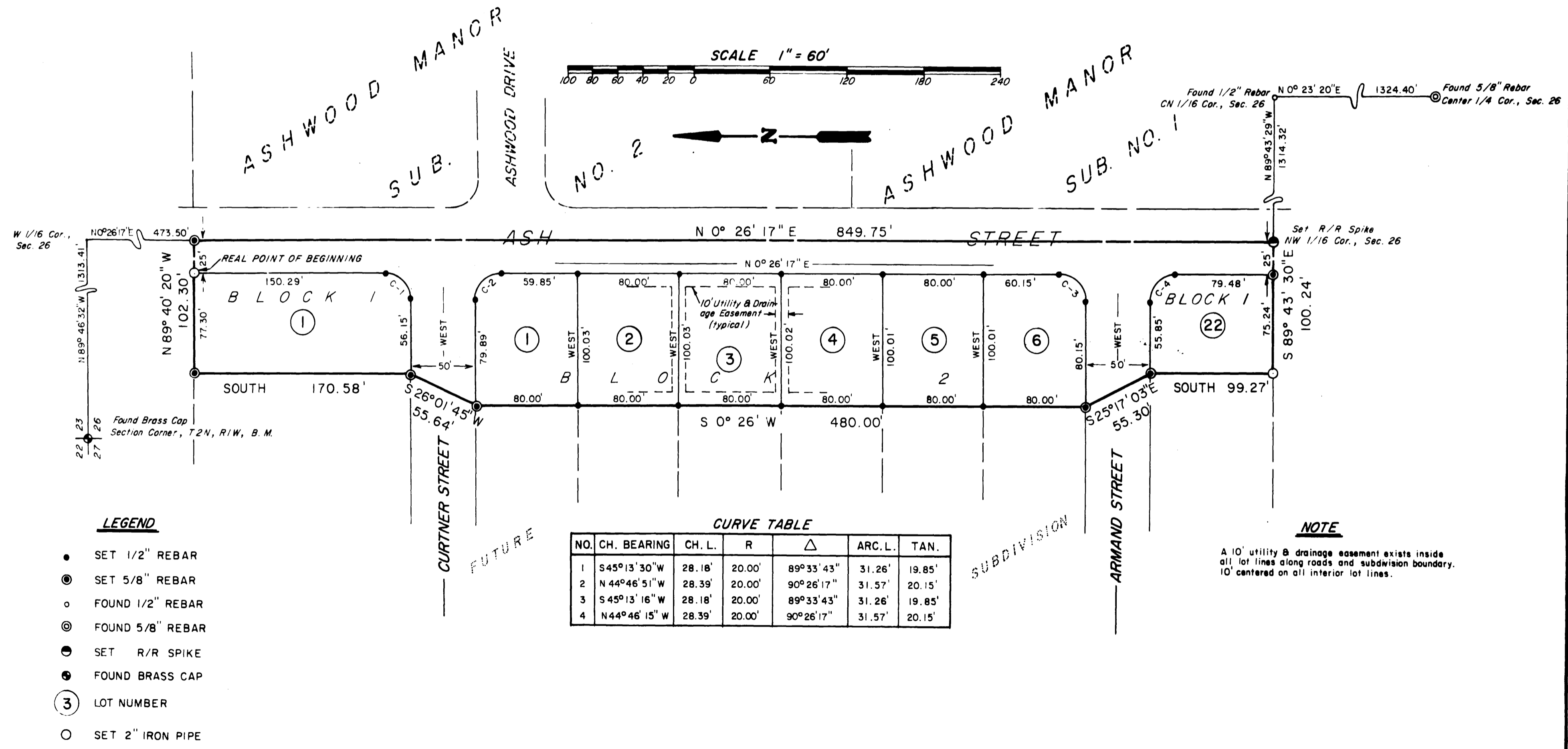


LIBERTY SUBDIVISION NO. 1

SITUATED IN THE NW 1/4 OF SECTION 26, TOWNSHIP 2 NORTH, RANGE 1 WEST, BOISE MERIDIAN, ADA COUNTY, IDAHO
 ROYLANCE ENGINEERING 1977



LEGEND

- SET 1/2" REBAR
- ⊙ SET 5/8" REBAR
- FOUND 1/2" REBAR
- ⊙ FOUND 5/8" REBAR
- SET R/R SPIKE
- FOUND BRASS CAP
- ③ LOT NUMBER
- SET 2" IRON PIPE

CURVE TABLE

NO.	CH. BEARING	CH. L.	R	Δ	ARC. L.	TAN.
1	S 45° 13' 30" W	28.18'	20.00'	89° 33' 43"	31.26'	19.85'
2	N 44° 46' 51" W	28.39'	20.00'	90° 26' 17"	31.57'	20.15'
3	S 45° 13' 16" W	28.18'	20.00'	89° 33' 43"	31.26'	19.85'
4	N 44° 46' 15" W	28.39'	20.00'	90° 26' 17"	31.57'	20.15'

NOTE

A 10' utility & drainage easement exists inside all lot lines along roads and subdivision boundary. 10' centered on all interior lot lines.

