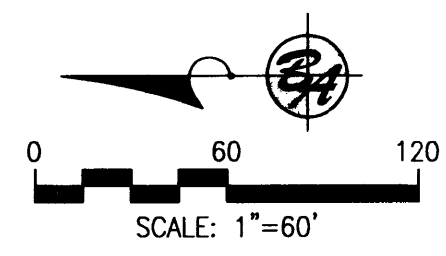


# Galiano Estates Subdivision

A portion of the south half of the northwest quarter of Section 14, Township 2 North, Range 1 West, Boise Meridian, City of Kuna, Ada County, Idaho.



## Legend

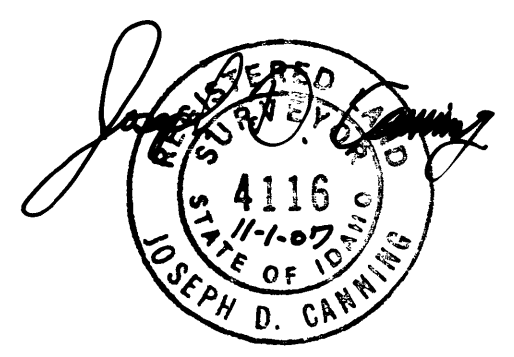
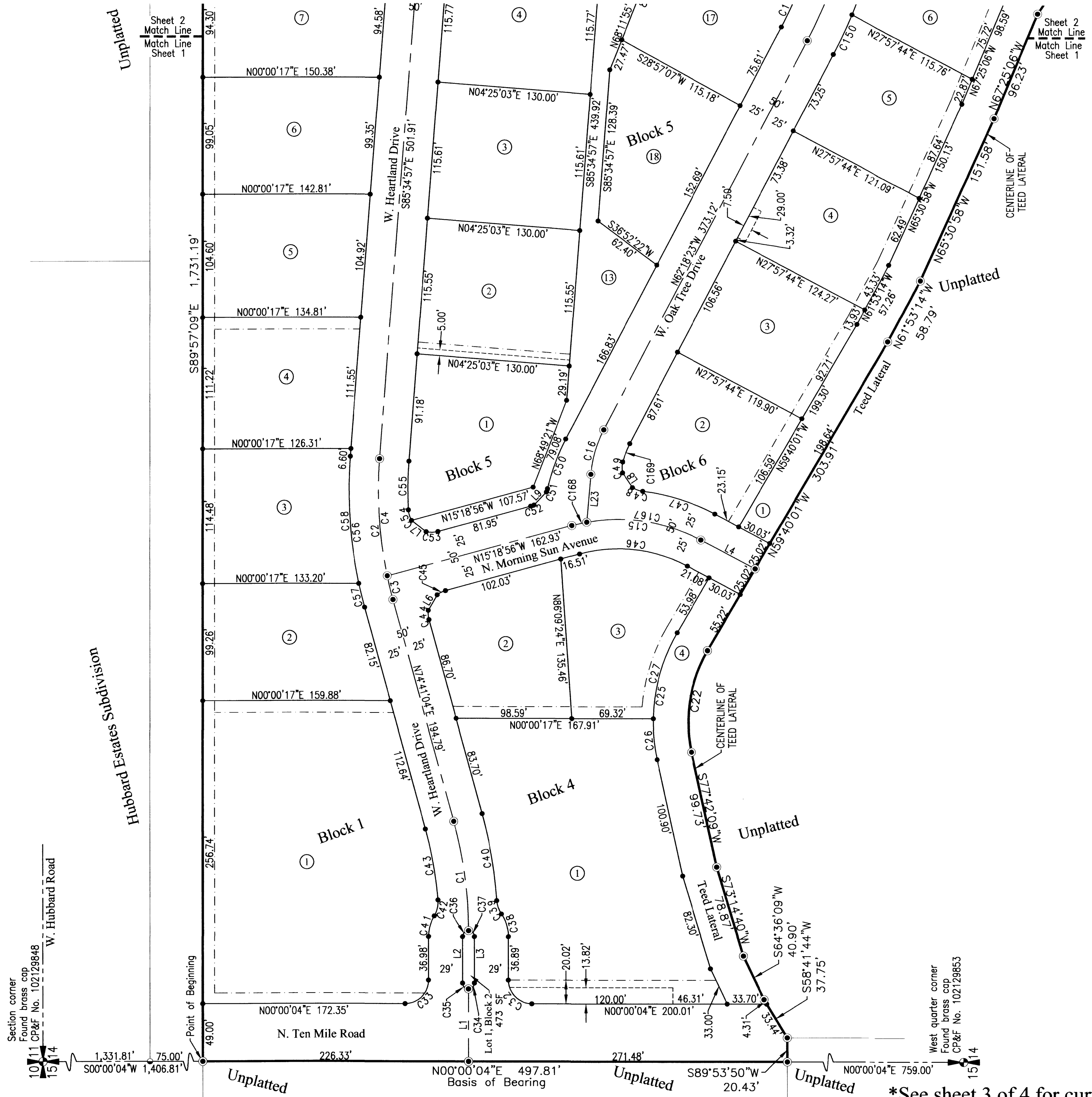
- Subdivision boundary
- Lot line
- Adjoining property line reference
- 10" pressure irrigation easement, unless otherwise noted
- ACHD storm drain easement
- Lot number
- Found brass cap, unless otherwise noted
- Set 1/2"x24" iron pin with plastic cap labeled "B&A LS 4116"
- Set 5/8"x30" iron pin with plastic cap labeled "B&A LS 4116"
- Calculated point, not set or found

## Line Table

LINE	BEARING	LENGTH
L1	S89°56'56"E	61.50'
L2	S89°56'56"E	39.43'
L3	S89°56'56"E	39.43'
L4	N27°57'44"E	52.14'
L5	N05°02'16"W	54.20'
L6	S60°18'56"E	15.20'
L7	N36°53'08"E	15.84'
L8	N55°49'41"E	15.20'
L9	N46°12'42"W	15.20'
L10	N16°04'17"E	30.06'
L11	N32°19'25"W	15.20'
L12	S42°35'18"W	15.20'
L13	S62°09'45"W	15.20'
L14	S38°00'17"E	15.20'
L15	S43°05'50"W	15.20'
L16	S46°54'10"E	15.20'
L17	N40°46'42"E	15.20'
L18	S50°02'16"E	15.20'
L19	S01°04'25"W	7.00'
L20	S01°04'25"W	7.00'
L21	S01°04'25"W	33.77'
L22	S01°04'25"W	44.56'
L23	S84°58'26"E	40.89'
L24	S01°04'12"W	35.00'
L25	S88°55'48"E	20.00'

## Reference Documents

- Subdivision Plats
  - Hubbard Estates Subdivision, Book 70, Pages 7150-7151
  - Mineral Springs Subdivision No. 2, Book 97, Pages 12332-12334
- Records of Survey
  - ROS No. 2581
  - ROS No. 3352
  - ROS No. 4548
- Deeds
  - Warranty Deed Instrument No. 106181856
  - Warranty Deed Instrument No. 106181857



**B&A Engineers, Inc.**

Consulting Engineers, Surveyors & Planners  
 5505 W. Franklin Rd. Boise, Id. 83705  
 (208) 343-3381

\*See sheet 3 of 4 for curve data and notes.





