

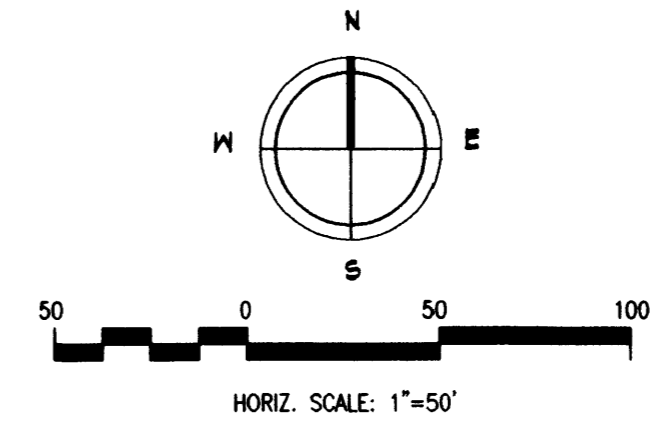
# DeerHorn Subdivision No. 1

A PORTION OF THE SOUTHEAST QUARTER OF THE SOUTHEAST QUARTER OF SECTION 14, TOWNSHIP 2 NORTH, RANGE 1 WEST, BOISE MERIDIAN, KUNA CITY, ADA COUNTY, IDAHO.

— 2000 —

### LEGEND

- PROPERTY BOUNDARY
- - - CENTERLINE OF ROADWAY
- - - 10' WIDE IRRIGATION EASEMENT
- o SET 5/8" x 30" IRON PIN W/ CAP - LS 4116
- SET 1/2" x 24" IRON PIN W/ CAP - LS 4116
- FOUND 5/8" IRON PIN W/ CAP
- ⊕ SECTION CORNER
- ⊙ QUARTER CORNER
- ① LOT NUMBER



LINE TABLE

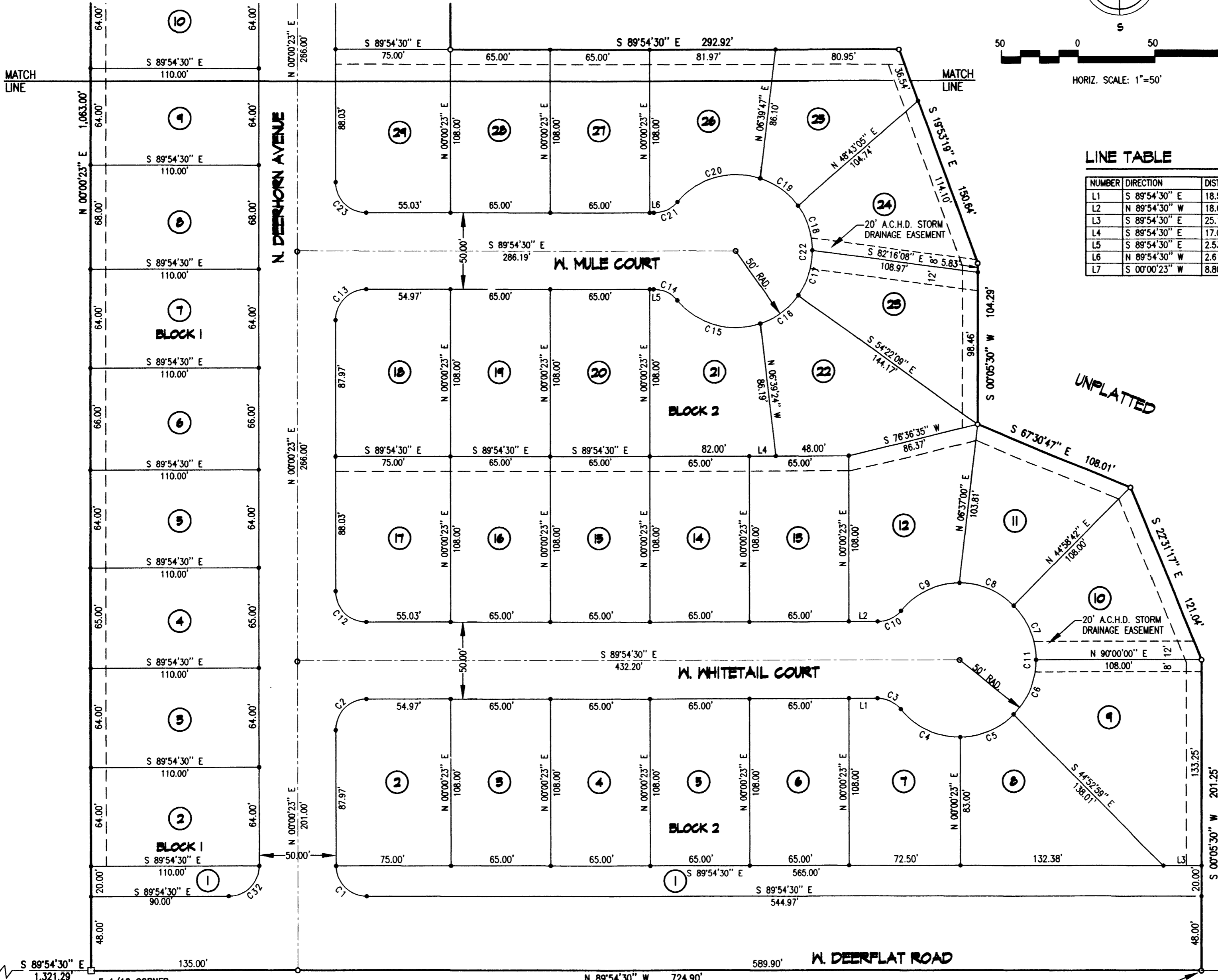
NUMBER	DIRECTION	DISTANCE
L1	S 89°54'30" E	18.54'
L2	N 89°54'30" W	18.62'
L3	S 89°54'30" E	25.12'
L4	S 89°54'30" E	17.00'
L5	S 89°54'30" E	2.53'
L6	N 89°54'30" W	2.61'
L7	S 00°00'23" W	8.80'

NOTES

- A 10' WIDE PUBLIC UTILITY, DRAINAGE AND IRRIGATION EASEMENT IS HEREBY RESERVED ADJACENT TO ALL PUBLIC RIGHT-OF-WAYS.
- A 5' WIDE PUBLIC UTILITY AND DRAINAGE EASEMENT IS HEREBY RESERVED ADJACENT TO ALL LOT LINES.
- THE DEVELOPER SHALL COMPLY WITH SECTION 31-3805 OF IDAHO CODE RELATING TO IRRIGATION WATER.
- A BLANKET PUBLIC UTILITY, DRAINAGE AND IRRIGATION EASEMENT IS HEREBY RESERVED ON LOT 1, BLOCK 1; LOT 1, BLOCK 2. ALL FOREMENTIONED LOTS ARE TO BE OWNED AND MAINTAINED BY THE HOMEOWNERS ASSOCIATION OF THIS SUBDIVISION.
- NO BUILDINGS, FENCES, TREES OR SHRUBS SHALL BE ALLOWED WITHIN THE ADA COUNTY HIGHWAY DISTRICT (A.C.H.D.) STORM DRAINAGE RETENTION AREAS SHOWN HEREON.
- DIRECT LOT ACCESS TO DEER FLAT ROAD IS PROHIBITED.

CURVE TABLE

NUMBER	DELTA	CHORD DIRECTION	T'	R'	L'	LC'
C1	89°54'52"	S 44°57'04" E	20.00	20.03	31.43	28.31
C2	90°05'08"	N 45°02'56" E	20.03	20.00	31.45	28.31
C3	49°59'41"	S 64°54'39" E	9.33	20.00	17.45	16.90
C4	50°25'32"	S 65°07'35" E	23.54	50.00	44.00	42.60
C5	44°32'38"	N 67°23'20" E	20.48	50.00	38.87	37.90
C6	45°07'01"	N 22°33'30" E	20.77	50.00	39.37	38.36
C7	45°05'20"	N 22°32'40" W	20.76	50.00	39.35	38.34
C8	45°02'59"	N 67°36'50" W	20.74	50.00	39.31	38.31
C9	49°45'52"	S 64°58'45" W	23.19	50.00	43.43	42.08
C10	49°59'41"	S 65°05'39" W	9.33	20.00	17.45	16.90
C11	279°59'23"	N 00°05'30" E	41.96	50.00	244.34	64.29
C12	89°54'52"	N 44°57'04" W	19.97	20.00	31.39	28.26
C13	90°05'08"	N 45°02'56" E	20.03	20.00	31.45	28.31
C14	49°59'41"	S 64°54'39" E	9.33	20.00	17.45	16.90
C15	68°30'45"	S 74°10'11" E	34.05	50.00	59.79	56.29
C16	35°56'36"	N 53°36'09" E	16.22	50.00	31.37	30.85
C17	35°37'51"	N 17°48'56" E	16.07	50.00	31.09	30.60
C18	35°58'17"	N 17°59'09" W	16.23	50.00	31.39	30.88
C19	35°36'09"	N 53°46'22" W	16.05	50.00	31.07	30.57
C20	68°19'45"	S 74°15'41" W	33.93	50.00	59.63	56.16
C21	49°59'41"	S 65°05'39" W	9.33	20.00	17.45	16.90
C22	279°59'23"	N 00°05'30" E	41.96	50.00	244.34	64.29
C23	89°54'52"	N 44°57'04" W	19.97	20.00	31.39	28.26
C24	90°05'08"	N 45°02'56" E	20.03	20.00	31.45	28.31
C25	89°54'52"	N 44°57'04" W	19.97	20.00	31.39	28.26
C26	72°51'34"	N 36°26'09" E	14.76	20.00	25.43	23.75
C27	42°02'59"	N 51°50'27" E	19.22	50.00	36.70	35.88
C28	136°24'20"	S 37°23'13" E	125.03	50.00	119.04	92.85
C29	40°29'24"	S 54°09'55" W	18.44	50.00	35.33	34.60
C30	24°48'27"	S 21°31'00" W	11.00	50.00	21.65	21.48
C31	243°45'10"	N 49°00'39" W	80.40	50.00	212.71	84.92
C32	90°05'08"	N 45°02'56" E	20.00	19.97	31.40	28.26



S 1/4 COR., SEC. 14  
FND ALUM. CAP  
CPF NO. 97056245

E 1/16 CORNER  
FND 5/8" PIN  
CPF NO. 98026784

BASIS OF BEARING

REAL POINT OF BEGINNING

SE SEC. COR.  
FND 5/8" PIN  
CPF NO. 8152397



