

**NOTES**

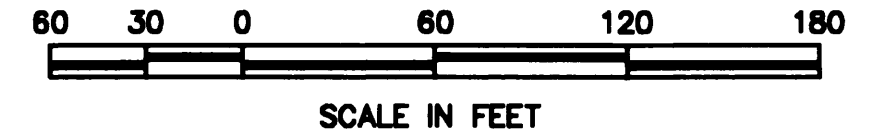
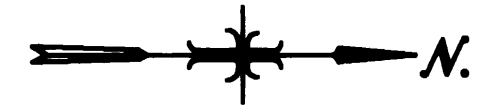
- BUILDING SETBACKS SHALL BE IN ACCORDANCE WITH THE ZONING ORDINANCE AT THE TIME OF ISSUANCE OF THE BUILDING PERMIT.
- ANY RESUBDIVISION OF THIS PLAT SHALL CONFORM TO THE APPLICABLE ZONING REGULATIONS IN EFFECT AT THE TIME OF RESUBDIVISION.
- ALL LOTS ARE HEREBY DESIGNATED AS HAVING A PERMANENT PUBLIC UTILITIES, DRAINAGE AND IRRIGATION EASEMENT OVER THE TEN (10) FEET ADJACENT TO ANY STREET THAT IS DEDICATED TO THE USE OF THE PUBLIC. THE EASEMENT SHALL NOT PRECLUDE THE CONSTRUCTION OF HARD SURFACED DRIVEWAYS TO EACH LOT.
- SUBDIVIDER WILL COMPLY WITH THE DISCLOSURE REQUIREMENTS OF SECTION 31-3805 OF THE IDAHO CODE.
- ALL INTERIOR LOT LINES HAVE A TEN (10) FOOT PUBLIC UTILITIES, DRAINAGE AND IRRIGATION EASEMENT LYING FIVE (5) FEET ON EITHER SIDE OF SAID LOT LINES.
- LOT 1, BLOCK 1 AND LOT 1, BLOCK 3 ARE DESIGNATED AS COMMON AREA AND ARE TO BE MAINTAINED BY THE HOME OWNER'S ASSOCIATION.
- LOT 1, BLOCK 3 IS DESIGNATED AS A BLANKET PUBLIC UTILITIES, IRRIGATION AND ACHD DRAINAGE EASEMENT.
- A TEN (10) FOOT PUBLIC UTILITY, DRAINAGE AND IRRIGATION EASEMENT IS HEREBY RESERVED ADJACENT TO THE EXTERIOR BOUNDARY LINES EXCEPT AS SHOWN ALONG THE NORTH BOUNDARY.
- LOT 1, BLOCK 1 IS DESIGNATED AS HAVING A BLANKET PUBLIC UTILITIES EASEMENT FOR AN EXISTING SANITARY SEWER TRUNK LINE. NO IMPROVEMENTS SHALL BE CONSTRUCTED ON THIS LOT, EXCEPT LAWN SOD AND UNDERGROUND SPRINKLERS, WITHOUT THE WRITTEN APPROVAL OF THE CITY OF KUNA.

**CURVE TABLE**

CURVE	DELTA	RADIUS	LENGTH	BEARING	CHORD
C1	21°33'31"	200.00'	75.25'	S 78°40'28" W	74.81'
C2	26°35'06"	250.00'	116.00'	N 88°00'40" E	114.96'
C3	34°56'18"	220.00'	134.15'	N 85°21'51" E	132.08'
C4	11°39'07"	170.00'	34.57'	N 83°29'12" E	34.51'
C5	09°45'56"	170.00'	28.98'	N 72°46'40" E	28.94'
C6	90°00'00"	20.00'	31.42'	N 44°44'44" W	28.28'
C7	49°59'41"	20.00'	17.45'	S 65°15'25" W	16.90'
C8	26°10'49"	90.00'	41.12'	S 66°50'18" E	40.77'
C9	49°59'41"	20.00'	17.45'	S 64°44'53" E	16.90'
C10	90°00'00"	20.00'	31.42'	N 45°15'16" E	28.28'
C11	90°00'00"	20.00'	31.42'	N 44°44'44" W	28.28'
C12	49°59'41"	20.00'	17.45'	S 65°15'25" W	16.90'
C13	16°07'39"	90.00'	25.33'	N 45°41'04" W	25.25'
C14	49°59'41"	20.00'	17.45'	S 64°44'53" E	16.90'
C15	90°00'00"	20.00'	31.42'	N 45°15'16" E	28.28'
C16	49°25'29"	40.00'	34.50'	N 24°27'29" W	33.45'
C17	85°12'49"	20.00'	29.75'	S 88°13'22" W	27.08'
C18	37°52'30"	90.00'	59.49'	N 18°40'59" W	58.42'
C19	41°52'40"	20.00'	14.82'	S 58°59'22" E	14.29'
C20	06°49'25"	250.00'	29.77'	N 71°18'25" E	29.76'
C21	90°00'00"	20.00'	31.42'	S 44°44'44" E	28.28'
C22	90°00'00"	20.00'	31.42'	S 45°15'16" W	28.28'
C23	89°18'56"	20.00'	31.18'	N 50°24'12" W	28.11'
C24	15°10'06"	280.00'	74.13'	S 87°28'37" E	73.91'
C25	57°19'37"	50.00'	50.03'	S 68°55'23" W	47.97'
C26	28°38'52"	50.00'	25.00'	N 39°26'31" W	24.74'
C27	50°44'41"	50.00'	44.28'	N 00°15'16" E	42.85'
C28	28°38'52"	50.00'	25.00'	N 39°57'03" E	24.74'
C29	28°38'52"	50.00'	25.00'	N 68°35'55" E	24.74'
C30	57°19'37"	50.00'	50.03'	S 68°24'51" E	47.97'
C31	57°19'37"	50.00'	50.03'	S 68°55'23" W	47.97'
C32	28°38'52"	50.00'	25.00'	N 68°05'23" W	24.74'
C33	28°38'52"	50.00'	25.00'	N 39°26'31" W	24.74'
C34	50°44'41"	50.00'	44.28'	N 00°15'16" E	42.85'
C35	28°38'52"	50.00'	25.00'	N 39°57'03" E	24.74'
C36	28°38'52"	50.00'	25.00'	N 68°35'55" E	24.74'
C37	57°19'37"	50.00'	50.03'	S 68°24'51" E	47.97'
C38	97°12'11"	50.00'	84.83'	N 85°46'56" W	75.01'
C39	37°10'51"	50.00'	32.45'	N 18°35'25" W	31.88'
C40	45°15'15"	50.00'	39.49'	N 22°37'38" E	38.47'
C41	45°00'01"	50.00'	39.27'	N 67°45'16" E	38.27'
C42	51°41'42"	50.00'	45.11'	S 63°53'53" E	43.60'
C43	90°00'00"	65.00'	102.10'	N 44°44'44" W	91.92'
C44	28°38'52"	50.00'	25.00'	N 68°05'23" W	24.74'
C45	06°00'00"	225.00'	23.56'	N 02°44'44" W	23.55'
C46	06°00'00"	175.00'	18.33'	N 02°44'44" W	18.32'
C47	06°00'00"	200.00'	20.94'	N 02°44'44" W	20.93'
C48	41°25'56"	20.000'	14.463'	N 47°10'44" E	14.150'
C49	32°12'30"	20.000'	11.243'	N 10°21'31" E	11.095'

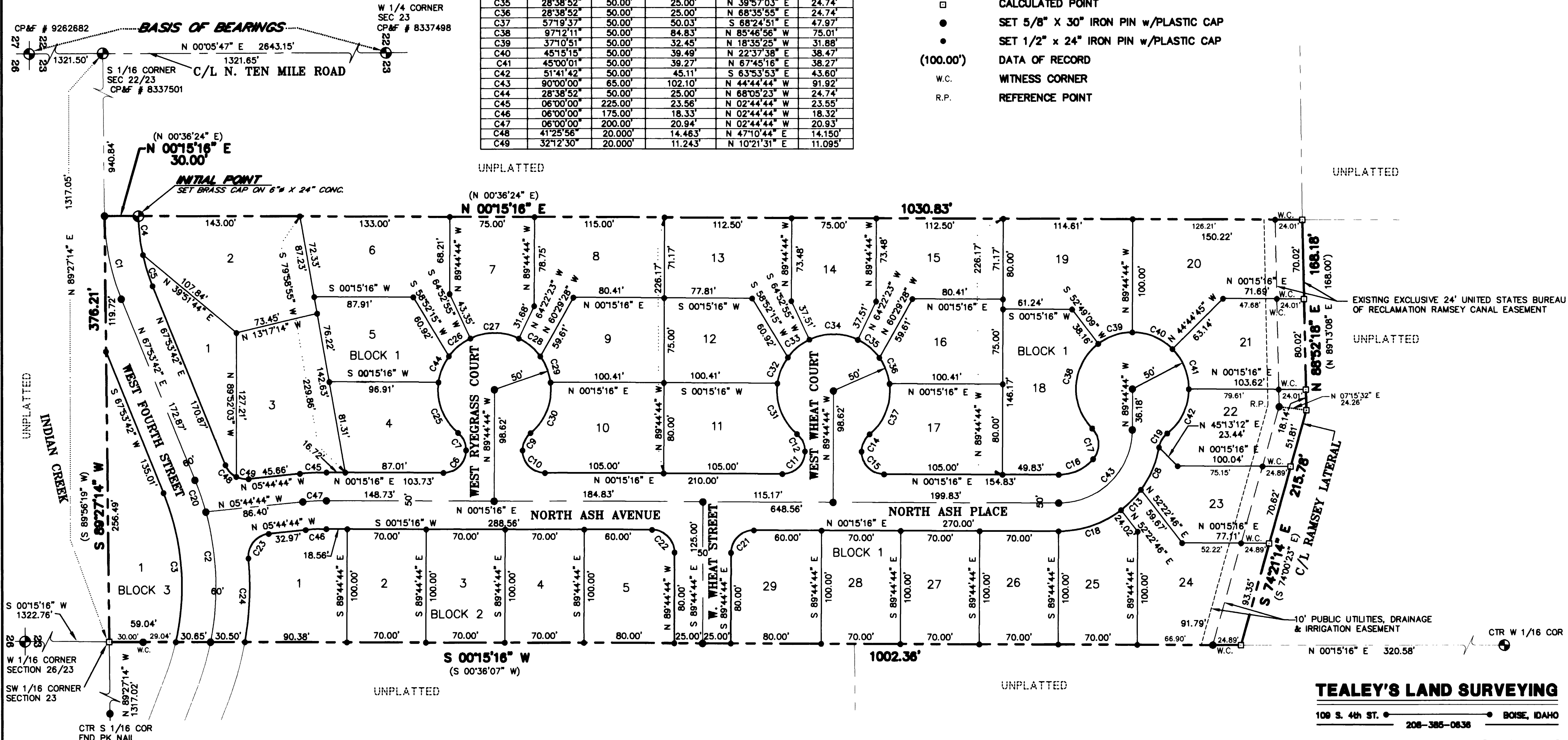
**PLAT OF CONESTOGA SUBDIVISION**

LYING IN THE NW 1/4 OF THE SW 1/4 SECTION 23,  
T.2N., R.1W., B.M.  
KUNA, ADA COUNTY, IDAHO  
**1994**



**LEGEND**

- BOUNDARY LINE
- - - EASEMENT BOUNDARY
- CENTER LINE
- LOT LINE
- ⊕ BRASS CAP (FOUND UNLESS OTHERWISE NOTED)
- CALCULATED POINT
- SET 5/8" X 30" IRON PIN w/PLASTIC CAP
- SET 1/2" X 24" IRON PIN w/PLASTIC CAP
- (100.00') DATA OF RECORD
- W.C. WITNESS CORNER
- R.P. REFERENCE POINT



**TEALEY'S LAND SURVEYING**

100 S. 4th ST. BOISE, IDAHO 208-385-0636

Project No. 1275 Sheet 1 of 2