

ASHWOOD MANOR SUBDIVISION NO. 2.

A Portion of the Northeast Quarter, Northwest Quarter,
Section 26, Township 2 North, Range 1 West, B. M.
Ada County, Idaho. 1975

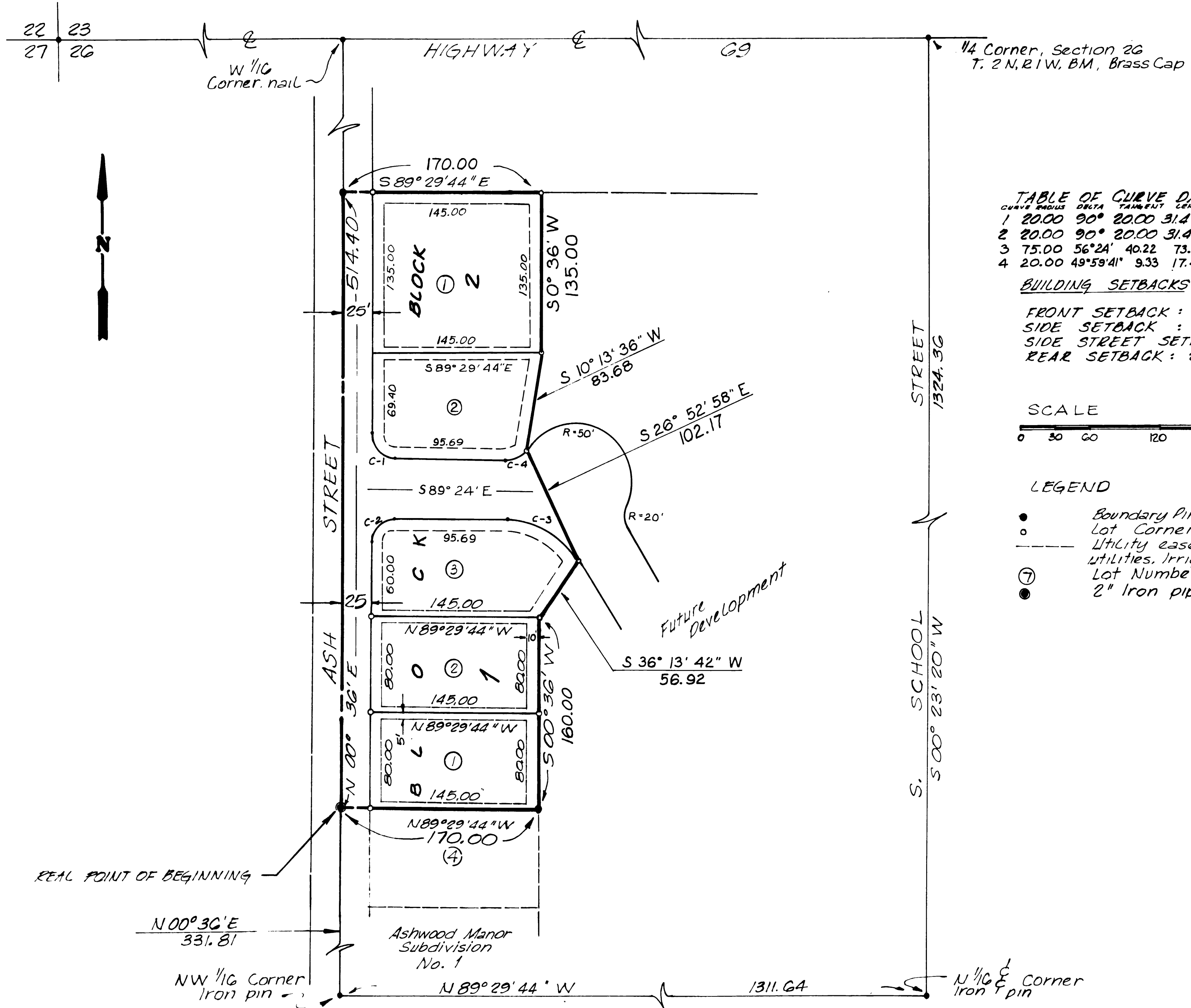
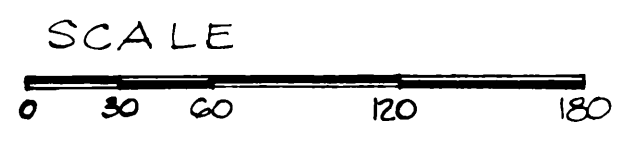


TABLE OF CURVE DATA

CURVE NO.	RADIUS	DELTA	TANGENT LENGTH	CHORD	CHORD BEG.	CHORD END
1	20.00	90°	20.00	31.42	28.28	N44°24'W
2	20.00	90°	20.00	31.42	28.28	N45°36'E
3	75.00	56°24'	40.22	73.83	70.88	S61°12'E
4	20.00	49°59'41"	9.33	17.45	16.90	N65°36'09"E

BUILDING SETBACKS

FRONT SETBACK : 25 FEET
 SIDE SETBACK : 10 FEET
 SIDE STREET SETBACK : 20 FEET
 REAR SETBACK : 25 FEET



- LEGEND**
- Boundary Pins
 - Lot Corners
 - Utility easements for public utilities, irrigation and drainage.
 - ① Lot Numbers
 - 2" Iron pipe

Friend's Surveying
Boise, Idaho

