

GENERAL

- 1. ALL WORK SHALL BE COMPLETED IN ACCORDANCE WITH THE SPECIFICATIONS AND/OR REQUIREMENTS OF THE CITY OF KUNA PUBLIC WORKS DEPARTMENT, THE ADA COUNTY HIGHWAY DISTRICT, AND/OR THE IDAHO STANDARDS FOR PUBLIC WORKS CONSTRUCTION (ISPCW - LATEST EDITION).

WATER

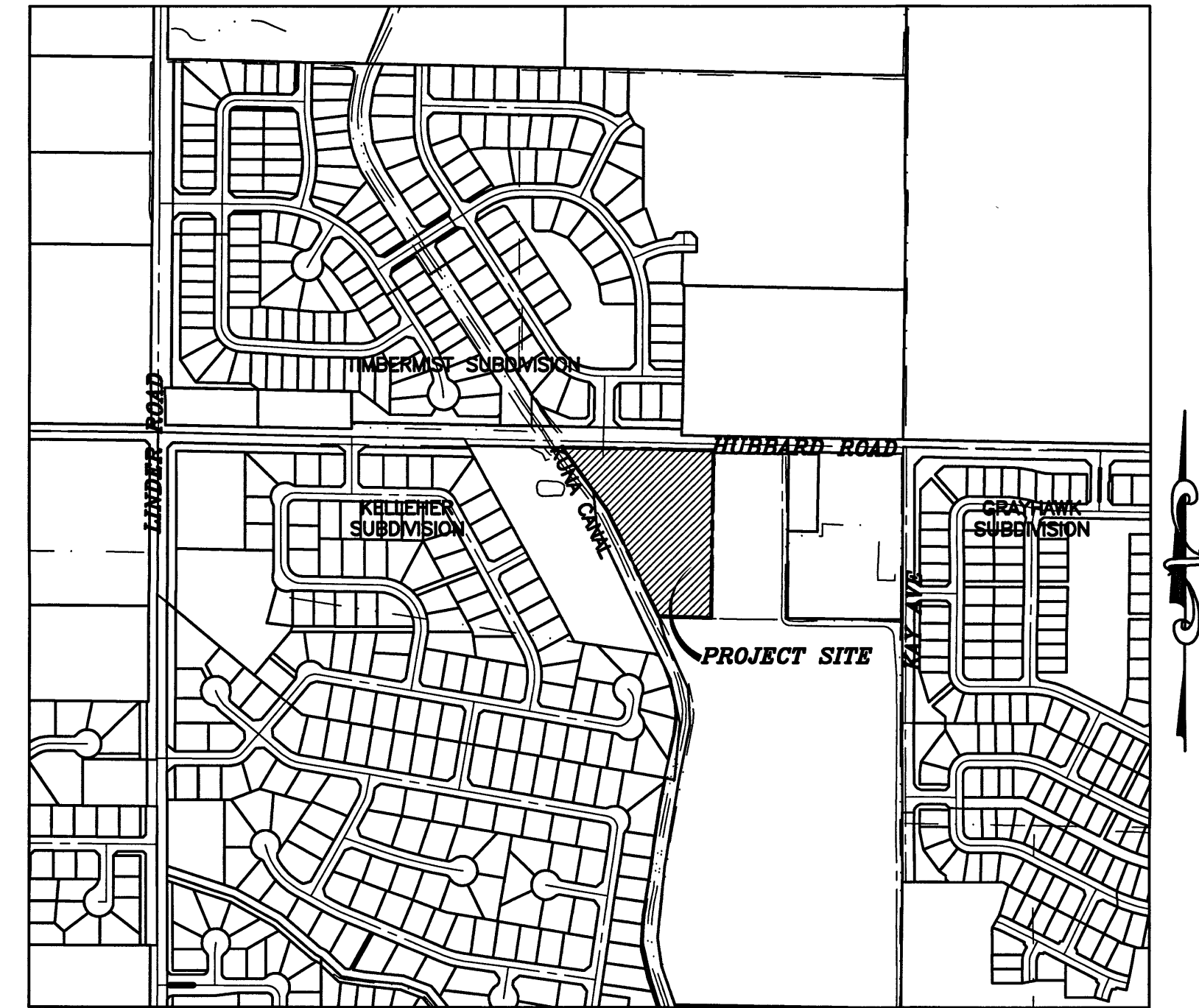
- 1. THE WATER SYSTEM SHALL BE CONSTRUCTED TO CONFORM WITH STANDARDS SET FORTH IN THE "IDAHO RULES FOR PUBLIC DRINKING WATER SYSTEMS", THE IDAHO STANDARDS FOR PUBLIC WORKS CONSTRUCTION (ISPCW LATEST EDITION) AND THE CITY OF KUNA STANDARDS.

SEWER

- 1. ALL WORK SHALL BE COMPLETED IN ACCORDANCE WITH THE IDAHO STANDARDS FOR PUBLIC WORKS CONSTRUCTION (ISPCW) - LATEST EDITION, THE CITY OF KUNA'S PUBLIC WORKS DEPARTMENT STANDARDS AND/OR THE ADA COUNTY HIGHWAY DISTRICT (ACHD) MODIFICATIONS TO THE ISPCW.

DEVELOPMENT PLANS FOR SARANDA SUBDIVISION

A PORTION OF THE NE 1/4 OF THE NW 1/4 OF SECTION 13 TOWNSHIP 2 NORTH, RANGE 1 WEST, BOISE MERIDIAN KUNA, ADA COUNTY, IDAHO 84307



NAVD 1988 DATUM VICINITY MAP 1" = 500'

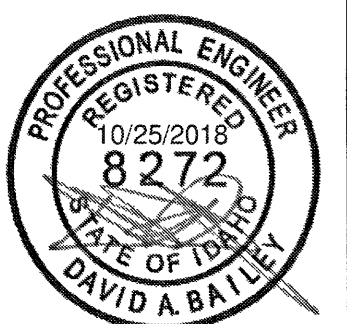
PLAN SHEET INDEX

Table with 2 columns: SHEET and DESCRIPTION. Lists sheets 1.0 through 6.4 and their corresponding descriptions like COVER SHEET, INDEX, VICINITY MAP, & NOTES; FINAL PLAT; EXISTING SITE & DEMO PLAN; MASTER UTILITY PLAN; etc.

THE ENGINEER OF RECORD CERTIFIES THAT THE PLANS ARE PREPARED IN SUBSTANTIAL CONFORMANCE WITH THE ACHD POLICY MANUAL AND STANDARDS IN EFFECT AT THE TIME OF PREPARATION. THE ENGINEER ACKNOWLEDGES THAT ACHD ASSUMES NO LIABILITY FOR ERROR OR DEFICIENCIES IN THE DESIGN. ALL VARIANCES FROM ACHD POLICY SHALL BE APPROVED IN WRITING. THE FOLLOWING VARIANCES, LISTED BY DATE AND SHORT DESCRIPTION, WERE APPROVED FOR THE PROJECT: - NONE.

Plans Are Accepted For Public Street Construction

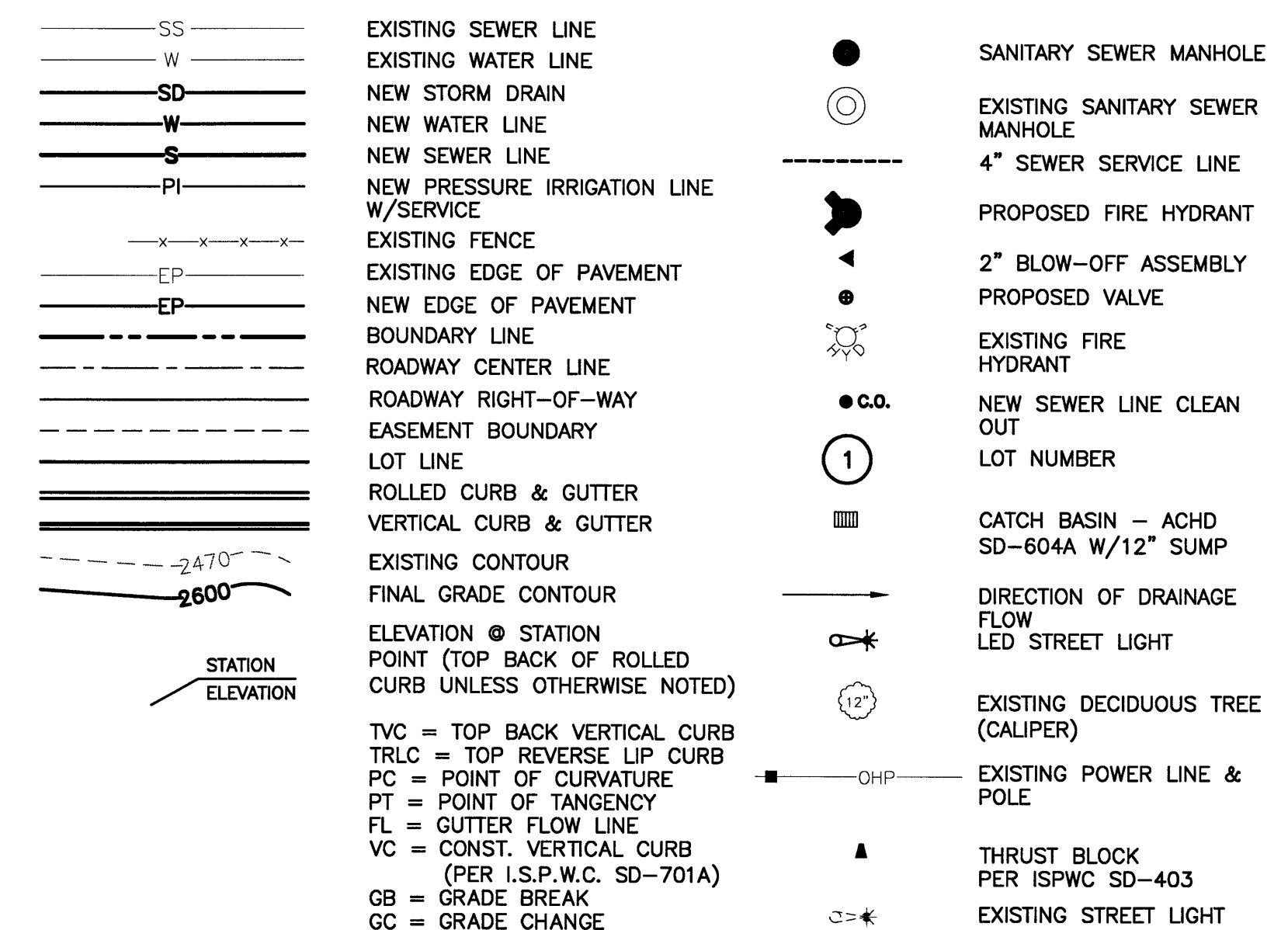
DEVELOPER TRILOGY DEVELOPMENT, INC. 9839 W CABLE CAR ST, SUITE 101 BOISE, ID 83709 TEL: 208-895-8858



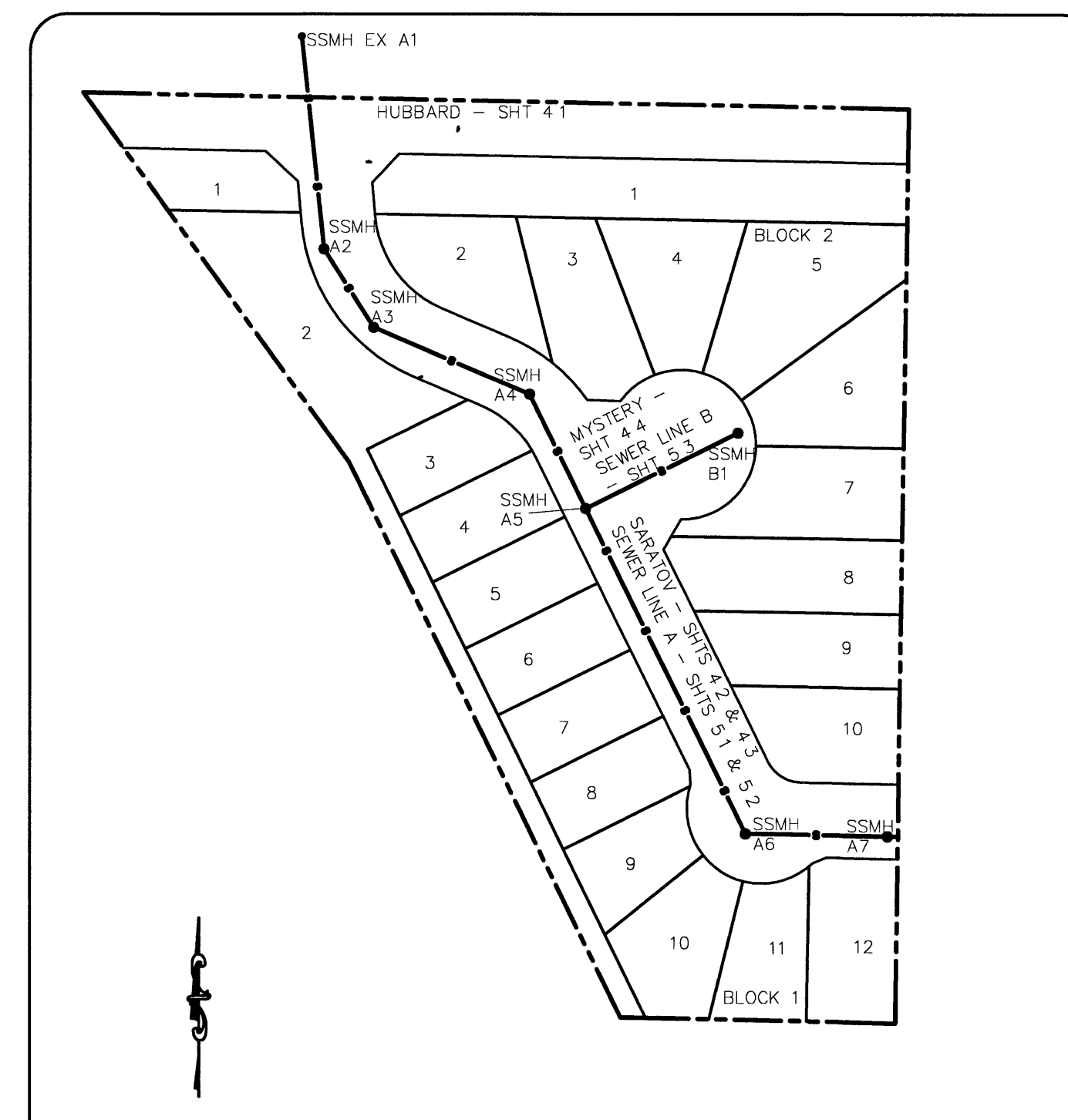
ROADWAY

- 1. ALL CONSTRUCTION IN THE PUBLIC RIGHT-OF-WAY SHALL CONFORM TO THE CURRENT EDITION OF THE ISPCW AND THE ACHD SUPPLEMENTAL SPECIFICATIONS. NO EXCEPTIONS TO DISTRICT POLICY, STANDARDS, AND THE ISPCW WILL BE ALLOWED UNLESS SPECIFICALLY AND PREVIOUSLY APPROVED IN WRITING BY THE DISTRICT.

GENERAL LEGEND



STREET & SEWER INDEX MAP -NTS-



Water, sewer and Irrigation plans are approved for construction. The design registered professional engineer's responsibilities and obligations listed in IDAPA 10.01.02 remain in effect. Paul A Stevens, P.E. Date: Nov 2018

Table with columns: REVISED NO., DATE, DESCRIPTION. Lists revision history from 03-14-2018 to 10-25-2018.

COVER SHEET SARANDA SUBDIVISION TRILOGY DEVELOPMENT, INC. Includes logo for Bailey Engineering, Inc. and project details.