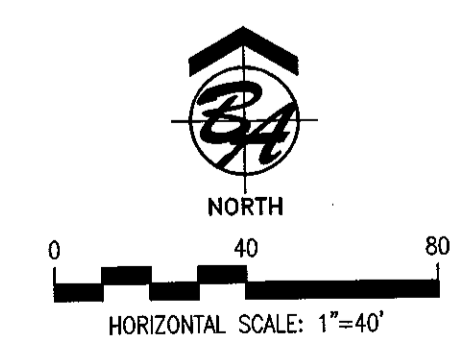


**Legend**

- PROJECT / PROPERTY BOUNDARY
- LOT LINE
- - - STREET CENTERLINE
- - - ADJOINING PROPERTY LINE
- - - ACHD STORM DRAINAGE EASEMENT
- - - CURB AND GUTTER FROM PREVIOUS PHASE
- - - EXISTING 3" ROLLED CURB & GUTTER
- - - EX-SW - - - SANITARY SEWER FROM PREVIOUS PHASE
- ⊙ - - - EXISTING SANITARY SEWER MANHOLE
- - - SEW - - - CONSTRUCT SANITARY SEWER MAIN LINE, SIZE NOTED
- ⊙ - - - EXISTING 4" SEWER SERVICE
- - - EX-W - - - WATER MAIN LINE FROM PREVIOUS PHASE
- - - W - - - EXISTING 8" PVC WATER MAIN LINE
- - - 1" - - - EXISTING 1" WATER SERVICE
- ⊙ - - - EXISTING WATER VALVE
- ⊙ - - - EXISTING FIRE HYDRANT
- ⊙ - - - EXISTING AIR RELEASE VALVE
- - - EX-PI - - - PRESSURE IRRIGATION LINE FROM PREVIOUS PHASE
- - - PI - - - EXISTING PRESSURE IRRIGATION LINE WITH FLOW DIRECTION
- ⊙ - - - EXISTING PRESSURE IRRIGATION SERVICE
- ⊙ - - - EXISTING PRESSURE IRRIGATION DRAIN
- ⊙ - - - EXISTING PRESSURE IRRIGATION VALVE
- ⊙ - - - EXISTING INLET CATCH BASIN TYPE 4
- ⊙ - - - EXISTING SEDIMENT TANK
- ⊙ - - - EXISTING STREET LIGHT
- 2.00% - - - GRADE AND DIRECTION
- ⊙ - - - LOT NUMBER

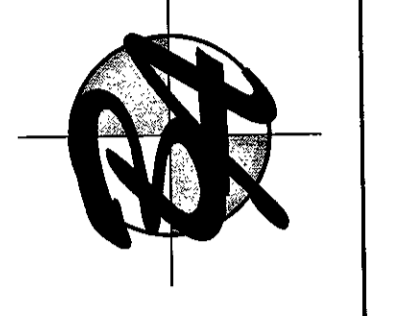
**Notes**

1. SANITARY SEWER LINE GRADES SHOWN HEREON ARE FROM THE CENTER OF MANHOLE TO THE CENTER OF MANHOLE.
2. SANITARY LINE LENGTHS SHOWN HEREON ARE PIPE LENGTHS.
3. WATER MAIN LINES SHOWN HEREON ARE BASED ON EVIDENCE COLLECTED IN THE FIELD AND INFORMATION PROVIDED BY OTHERS. LINE DEPTHS HAVE NOT BEEN VERIFIED.
4. SANITARY SEWER SERVICE LOCATIONS ARE SHOWN BASED ON INFORMATION AVAILABLE. DEPTHS TO THE SERVICES HAVE NOT BEEN VERIFIED.



**Record Construction Drawing**  
 Date: October 28, 2016  
 By: K.M. Kettelle  
 These record drawings have been prepared by B & A Engineers Inc., based on information collected during construction, after construction, and provided by others. Deviations may exist between the information shown hereon, and the actual improvements.

**B & A Engineers, Inc.**  
 Consulting Engineers, Surveyors & Planners  
 5505 W. Franklin Rd. Boise, Id. 83705  
 (208) 343-3381

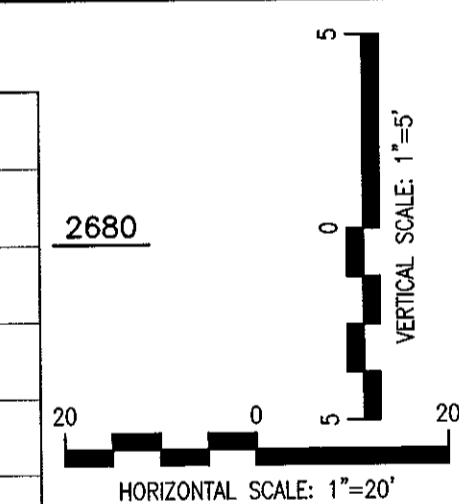
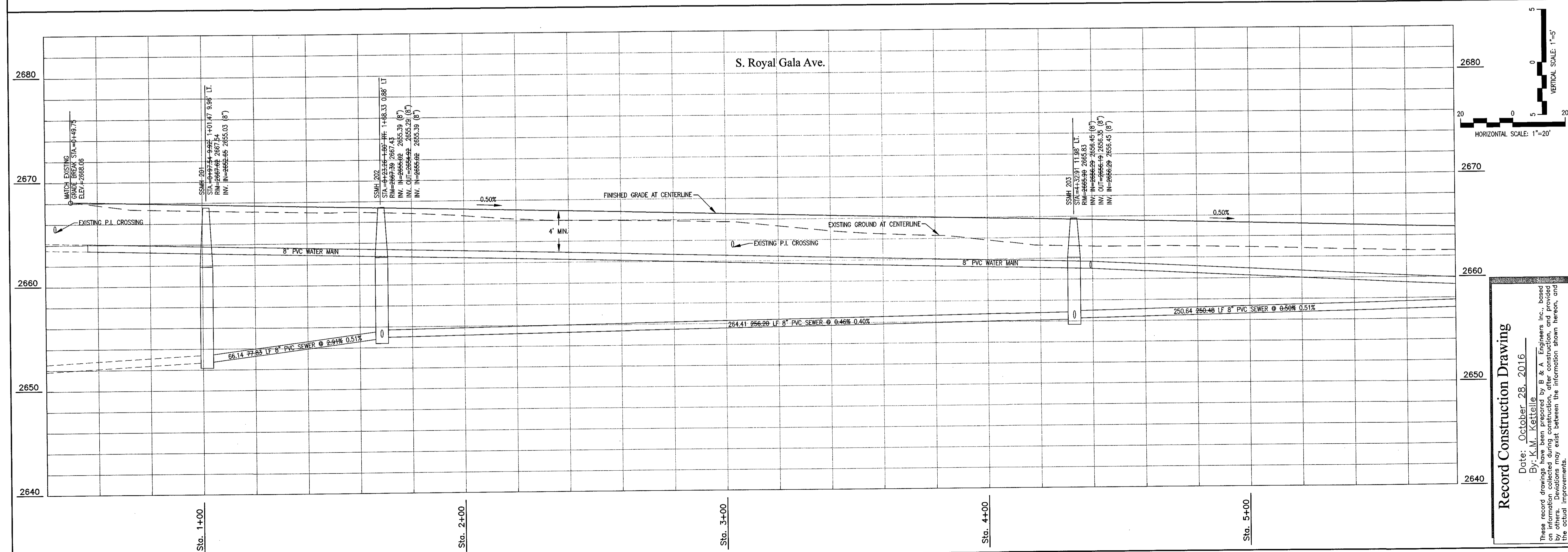
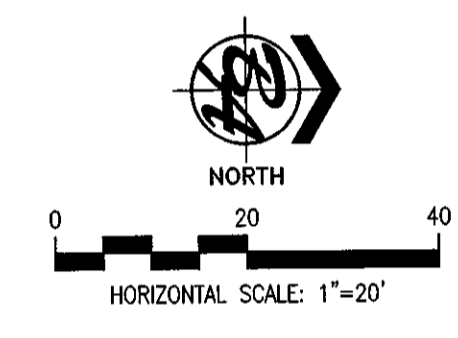
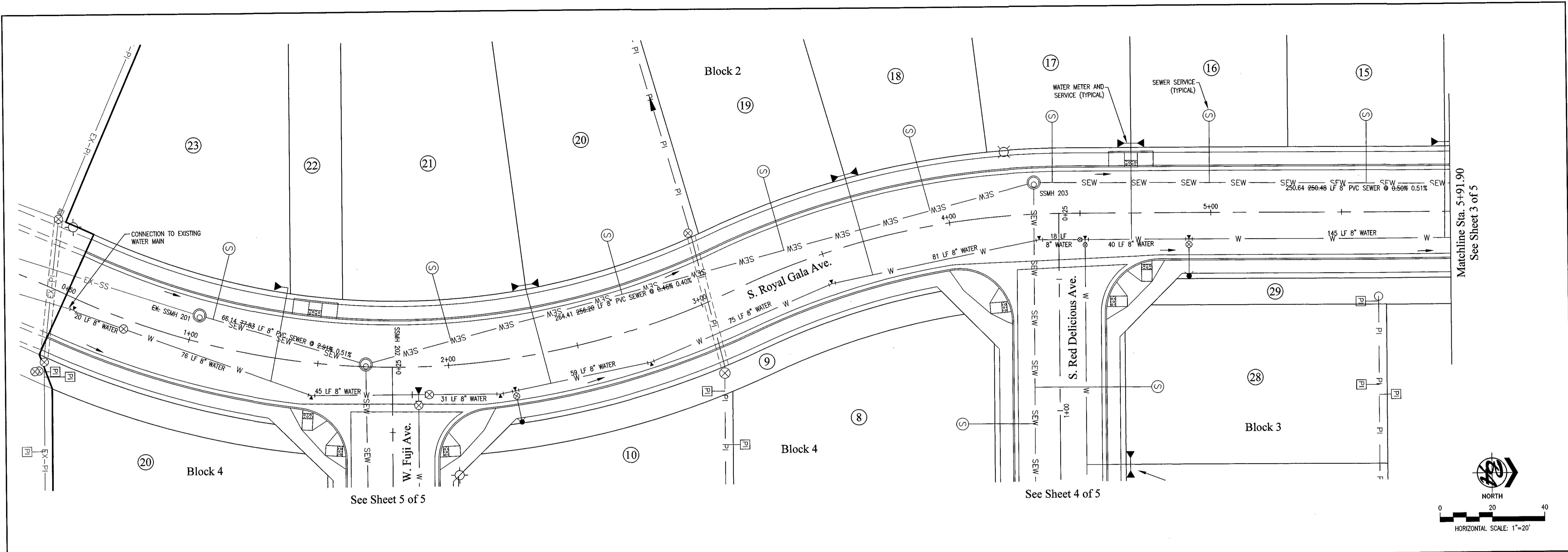


**Site Composite Plan**

**Silver Trail Subdivision No. 2**  
 A PARCEL OF LAND SITUATE IN THE NORTHWEST QUARTER OF THE  
 SOUTHWEST QUARTER OF SECTION 11, TOWNSHIP 2 NORTH,  
 RANGE 1 WEST, BOISE MERIDIAN, CITY OF KUNA, ADA COUNTY, IDAHO

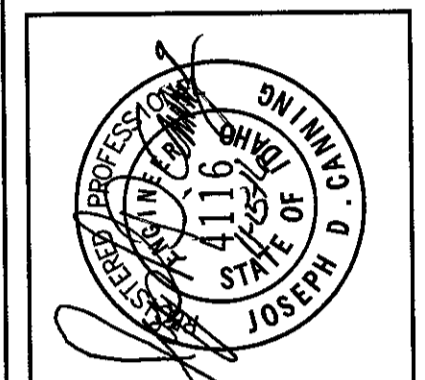
REV.	DESC.	DATE/BY
1	CITY OF KUNA COMMENTS DATED NOVEMBER 14, 2016	11-15-16 KAM

SCALE: 1" = 20'  
 DATE: OCTOBER 12, 2016  
 DRAWN BY: KETTELLE  
 CHECKED BY: J.L. CANNING  
 PROJECT NO.:  
 DRAWING FILE NAME: SilverTrailPhase2Sub2.dwg



**Record Construction Drawing**  
 Date: October 28, 2016  
 By: K.M. Kettle  
 These record drawings have been prepared by B & A Engineers Inc., based on information collected during construction, after construction, and provided by others. Deviations may exist between the information shown hereon, and the actual improvements.

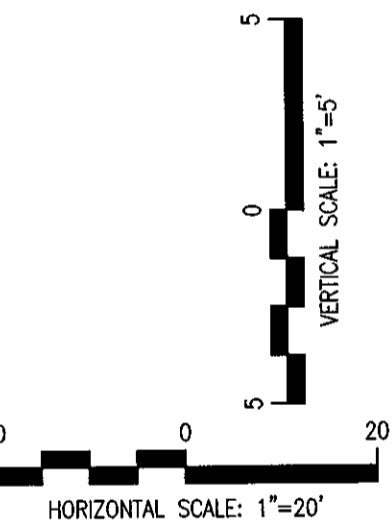
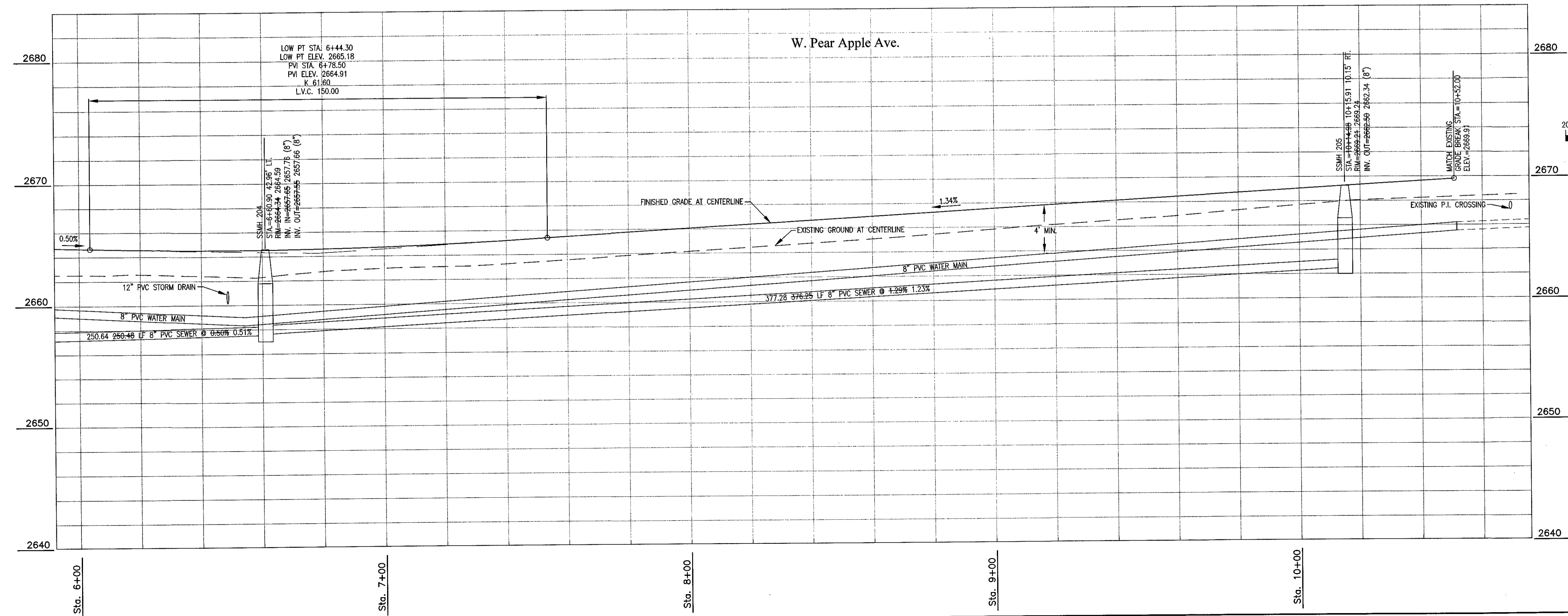
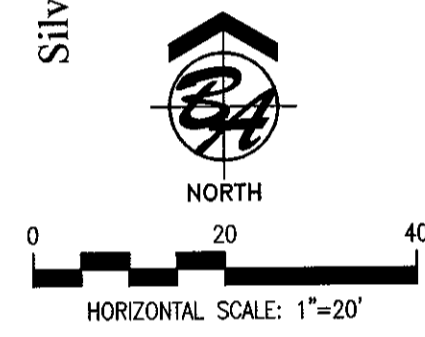
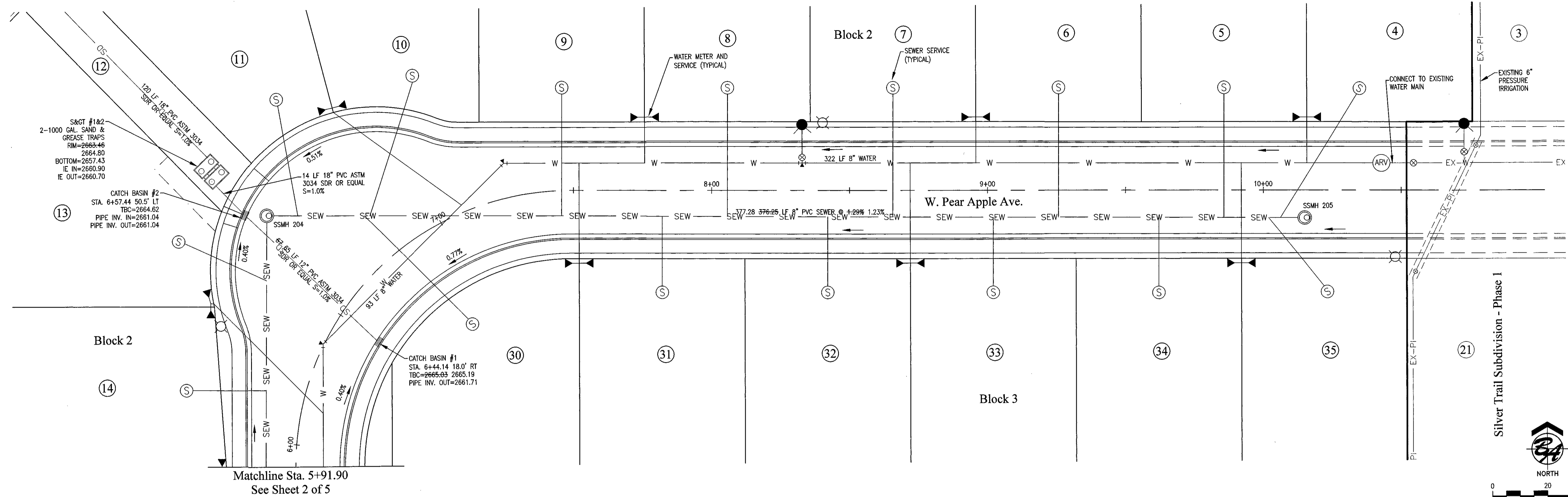
**B & A Engineers, Inc.**  
 Consulting Engineers, Surveyors & Planners  
 5505 W. Franklin Rd. Boise, Id. 83705  
 (208) 343-3381



**Plan/Profile - S. Royal Gala Ave.**  
**Silver Trail Subdivision No. 2**  
 A PARCEL OF LAND SITUATE IN THE NORTHWEST QUARTER OF THE  
 SOUTHWEST QUARTER OF SECTION 11, TOWNSHIP 2 NORTH,  
 RANGE 1 WEST, BOISE MERIDIAN, CITY OF KOONA, ADA COUNTY, IDAHO

REV.	DESC.	DATE	BY
1	CITY OF KOONA COMMENTS DATED NOVEMBER 14, 2016	11-15-16	KMK

DATE:	OCTOBER 12, 2016
DRAWN BY:	K.M. KETTLE
CHECKED BY:	J.D. CHANG
PROJECT NO.:	
DRAWING FILE NAME:	SilverTrailPhase2Subdiv.dwg



**Record Construction Drawing**  
 Date: October 28, 2016  
 By: K.M. Kettelle  
 These record drawings have been prepared by B & A Engineers, Inc., based on information collected during construction, after construction, and provided by others. Deviations may exist between the information shown herein, and the actual improvements.

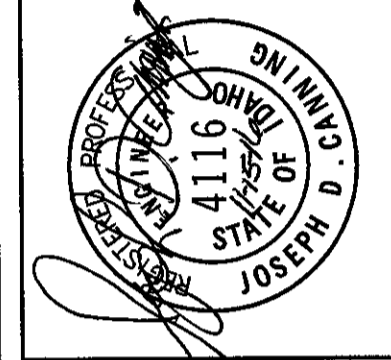
REV.	DESC.	DATE/BY
1	CITY OF KUNA COMMENTS DATED NOVEMBER 14, 2016	11-15-16 KMK

SCALE: 1" = 20'
DATE: OCTOBER 12, 2016
DRAWN BY: K.M. KETTELLE
CHECKED BY: J.D. CANNING
PROJECT NO. ET13
DRAWING FILE NAME: SilverTrailPhase2Subdiv.dwg

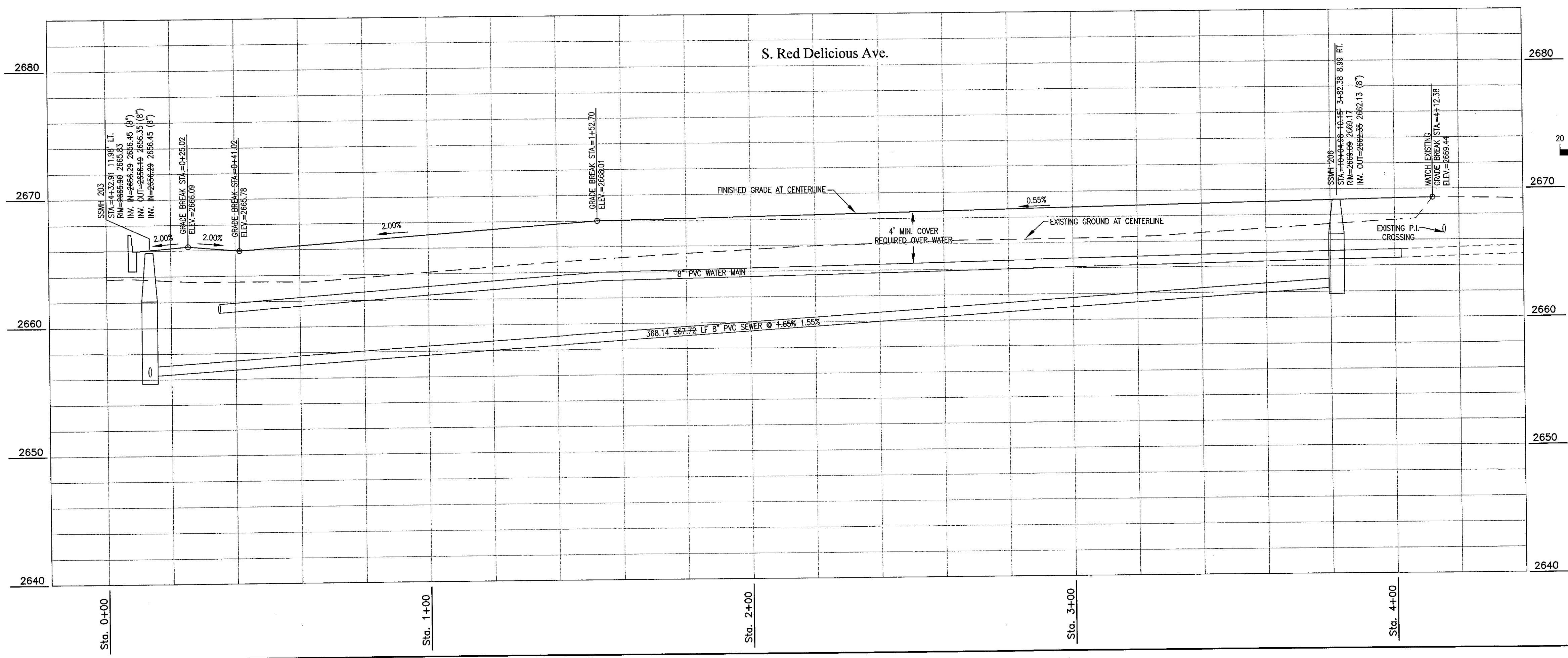
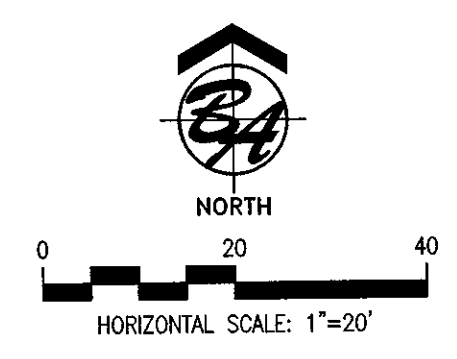
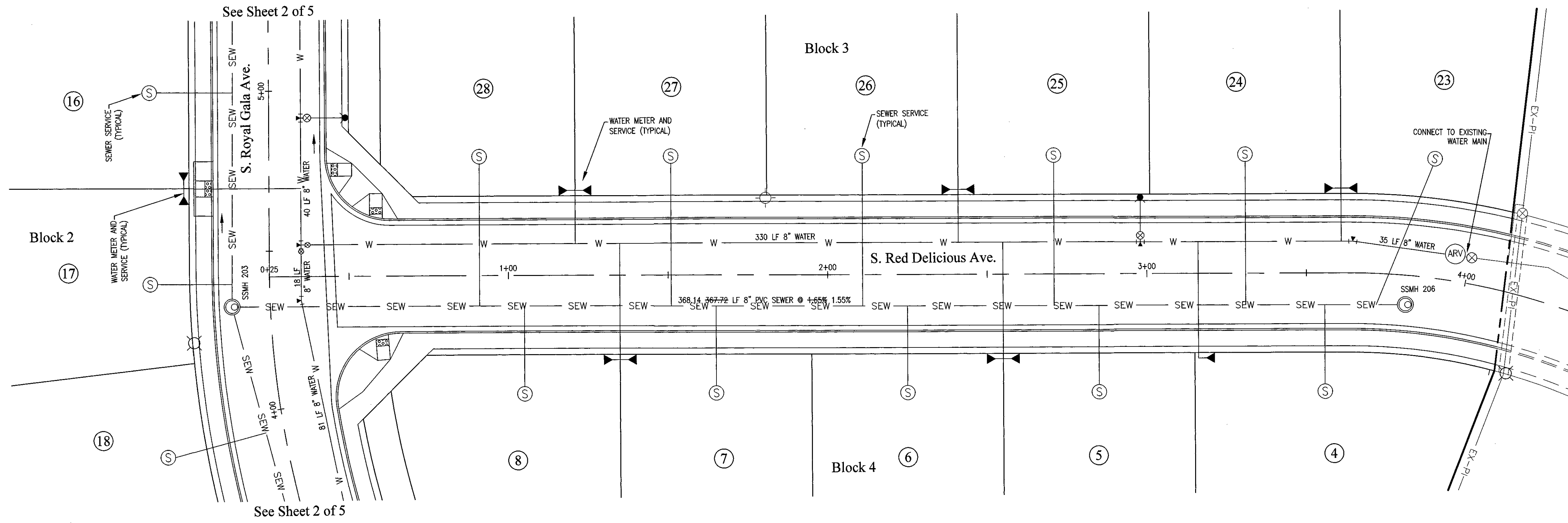
SHEET NO:  
**3 of 5**

Plan/Profile - W. Pear Apple Ave.

**Silver Trail Subdivision No. 2**  
 A PARCEL OF LAND SITUATE IN THE NORTHWEST QUARTER OF THE  
 SOUTHWEST QUARTER OF SECTION 11, TOWNSHIP 2 NORTH,  
 RANGE 1 WEST, BOISE MERIDIAN, CITY OF KUNA, ADA COUNTY, IDAHO



**B & A Engineers, Inc.**  
 Consulting Engineers, Surveyors & Planners  
 5505 W. Franklin Rd. Boise, Id. 83705  
 (208) 345-3381



**Record Construction Drawing**

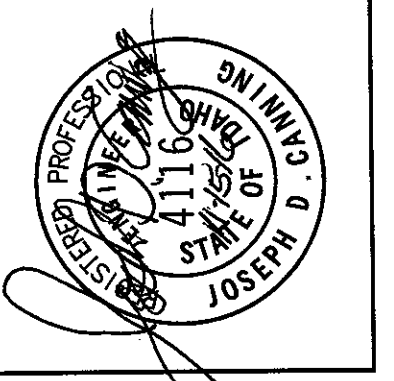
Date: October 28, 2016

By: K. M. Kettelle

These record drawings were prepared by B & A Engineers, Inc., based on information furnished by the City of Kuna, Idaho, and provided by others. Deviations may exist between the information shown hereon, and the actual improvements.

DRAWING FILE NAME: SilverTrailPhase2Subdiv.dwg

**B & A Engineers, Inc.**  
 Consulting Engineers, Surveyors & Planners  
 5505 W. Franklin Rd. Boise, Id. 83705  
 (208) 343-3381



Plan/Profile - S. Red Delicious Ave.

**Silver Trail Subdivision No. 2**

A PARCEL OF LAND SITUATE IN THE NORTHWEST QUARTER OF THE  
 SOUTHWEST QUARTER OF SECTION 11, TOWNSHIP 2 NORTH,  
 RANGE 1 WEST, BOISE MERIDIAN, CITY OF KUNA, ADA COUNTY, IDAHO

REV.	DESC.	DATE/ BY
A	CITY OF KUNA COMMENTS DATED NOVEMBER 14, 2016	11-15-16 KMK

SCALE: 1" = 20'

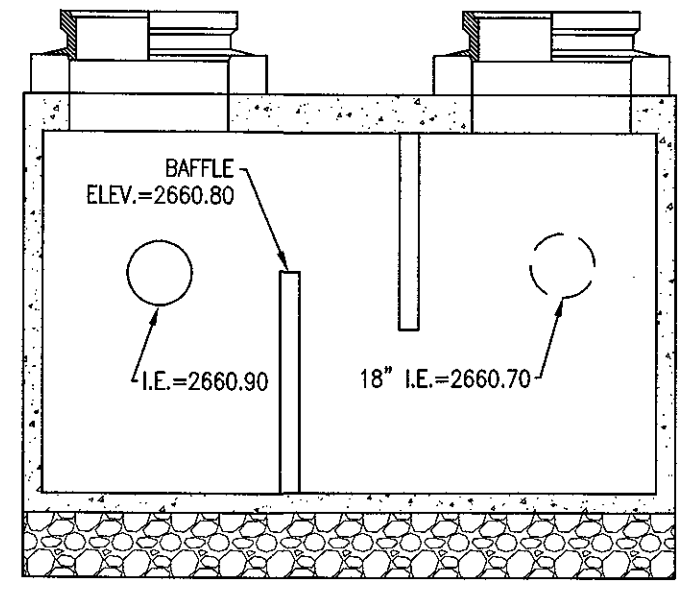
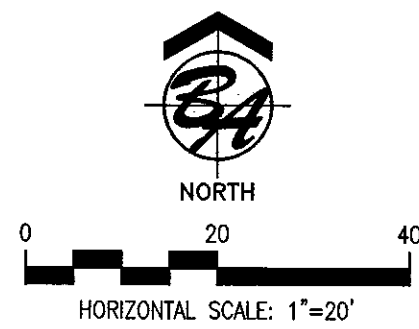
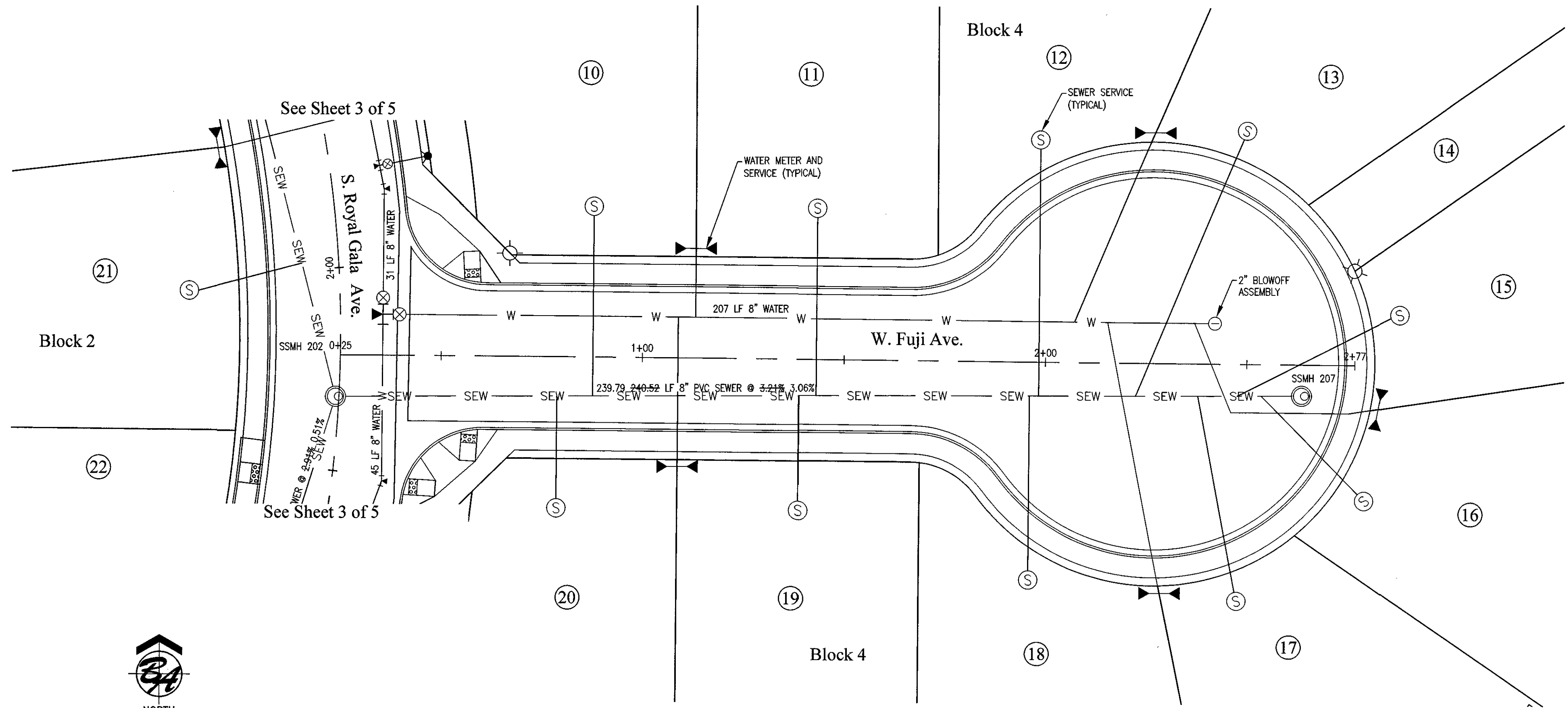
DATE: OCTOBER 12, 2016

DRAWN BY: KETTELLE

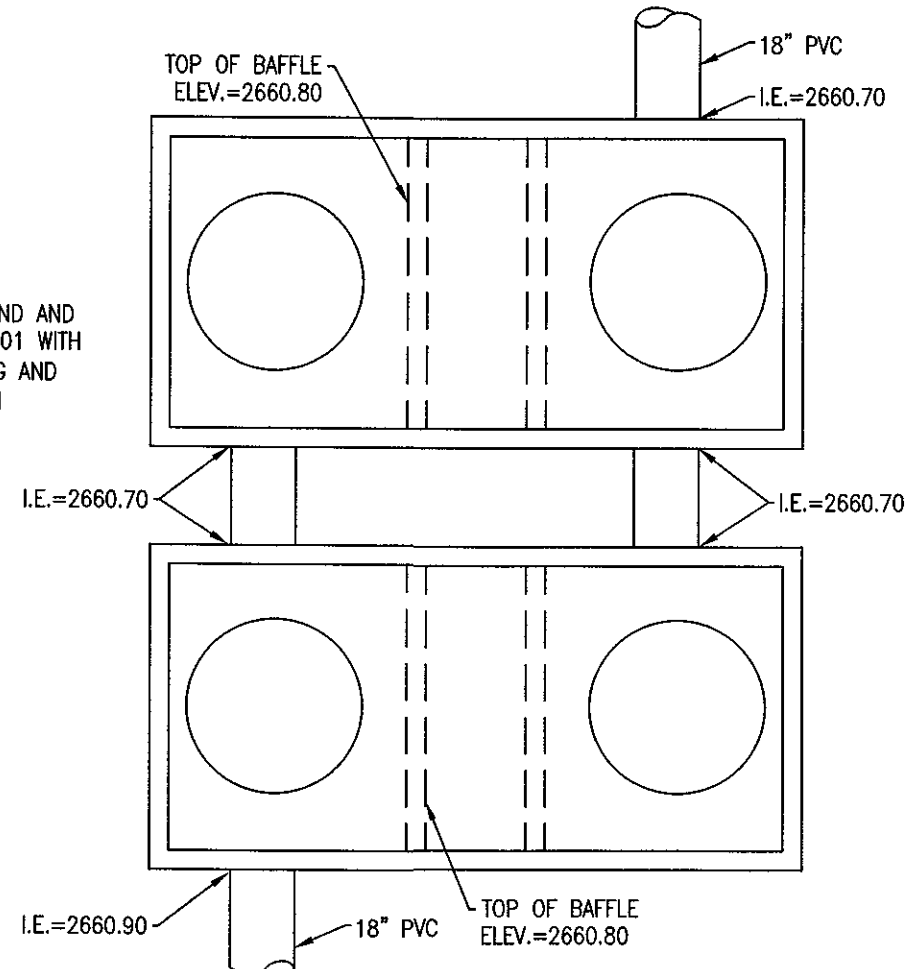
CHECKED BY: J.D. CANNING

PROJECT NO: ET13

SHEET NO: **4 of 5**

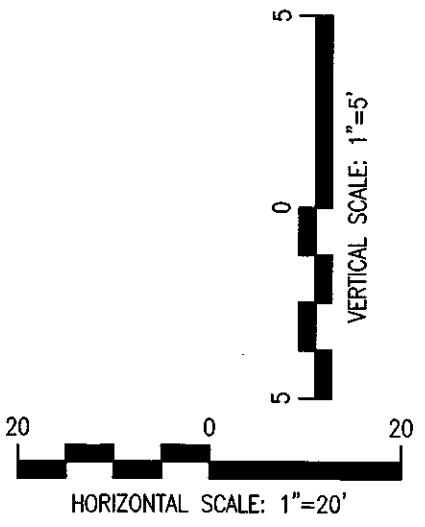
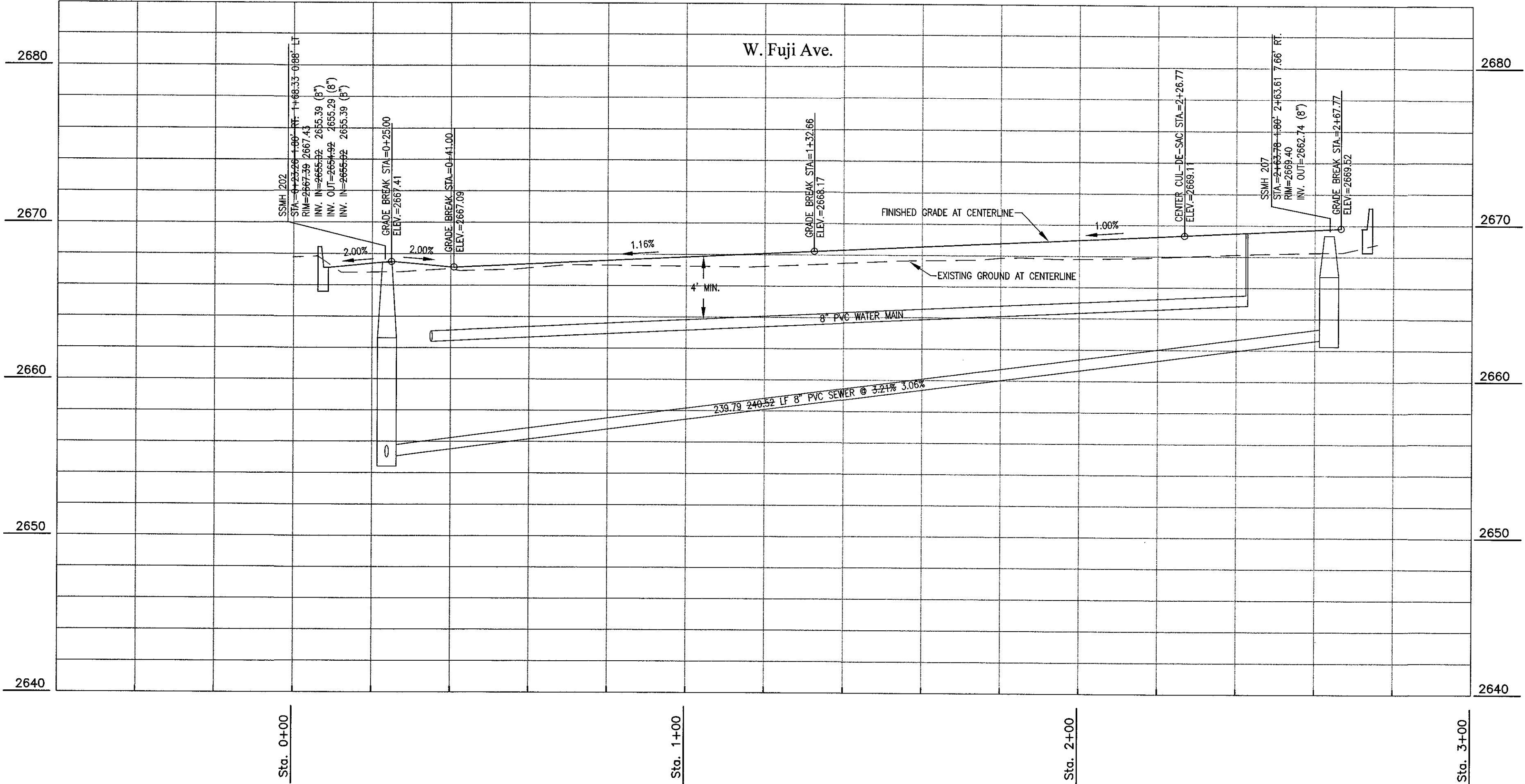


S&G Section View Detail  
N.T.S.



S&G Plan View Detail  
N.T.S.

2-1000 GALLON SAND AND GREASE TRAP BMP-01 WITH 21\"/>



**Record Construction Drawing**

Date: October 28, 2016  
 By: K.M. Kettelle  
 These record drawings have been prepared by B & A Engineers Inc., based on information collected during construction, after construction, and provided by the contractor. They may differ from the information shown hereon, and the actual improvements.

REV.	DESC.	DATE/BY
A	CITY OF KUMA COMMENTS DATED NOVEMBER 14, 2016	11-15-16 KMK

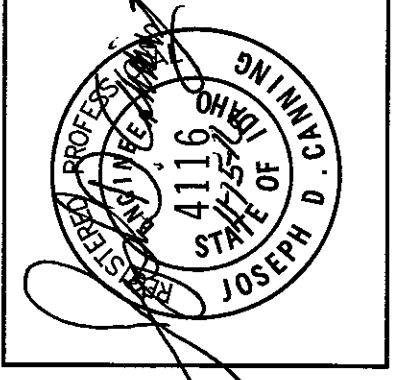
SCALE: 1" = 20'
DATE: OCTOBER 12, 2016
DRAWN BY: K.M. KETTELLE
CHECKED BY: J.D. CANNING
PROJECT NO. ET13
DRAWING FILE NAME: SilverTrailSubdiv22subdiv1.dwg

SHEET NO:  
**5 of 5**

Plan/Profile - W. Fuji Ave.

**Silver Trail Subdivision No. 2**

A PARCEL OF LAND SITUATE IN THE NORTHWEST QUARTER OF THE SOUTHWEST QUARTER OF SECTION 11, TOWNSHIP 2 NORTH, RANGE 1 WEST, BOISE MERIDIAN, CITY OF KUMA, ADA COUNTY, IDAHO



**B & A Engineers, Inc.**  
 Consulting Engineers, Surveyors & Planners  
 5505 W. Franklin Rd. Boise, Id. 83705  
 (208) 343-3381