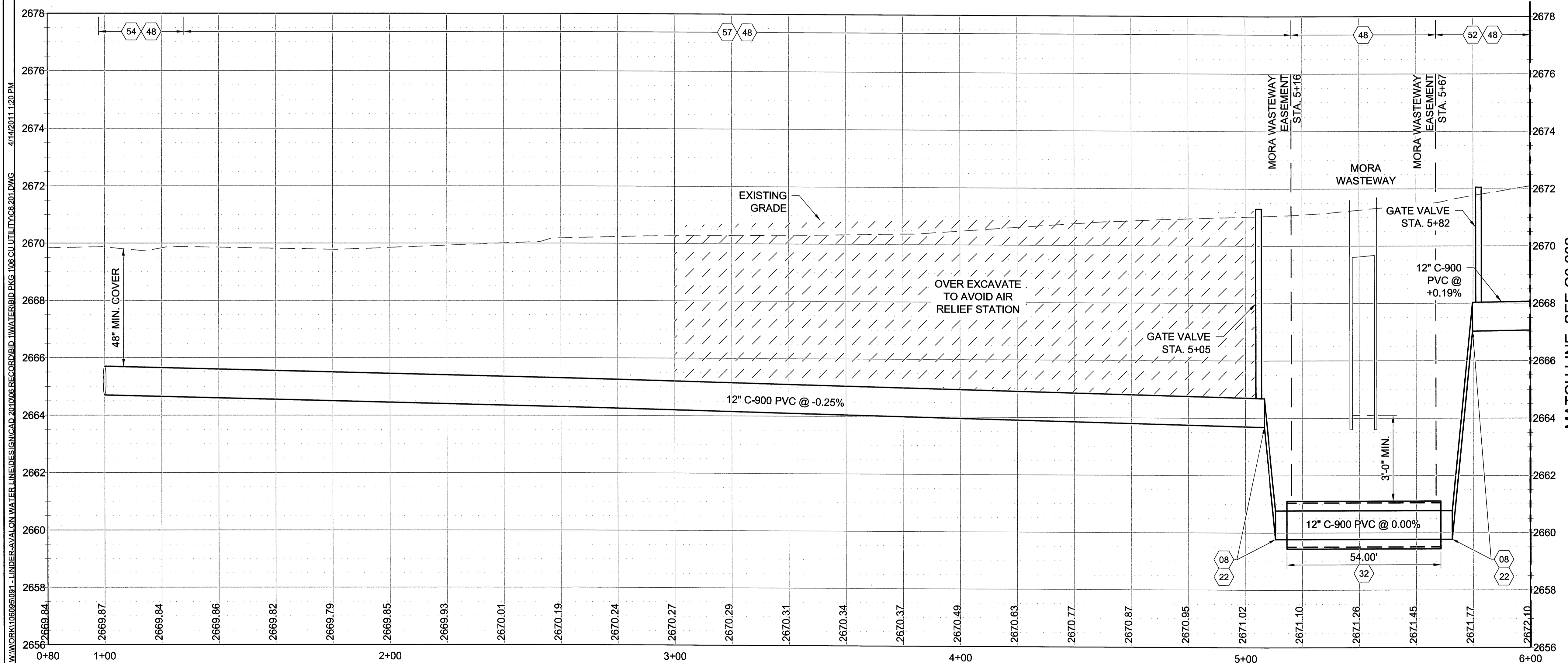


- GENERAL SHEET NOTES**
- DEFLECT PIPE INCREMENTALLY VERTICALLY & HORIZONTALLY TO ACHIEVE BEND AS NECESSARY. DO NOT EXCEED MANUFACTURERS RECOMMENDATION.
 - CONTRACTOR TO POTHOLE EXISTING UTILITIES PRIOR TO CONSTRUCTION TO VERIFY LOCATION & DEPTH.
 - COORDINATE CONNECTIONS TO THE EXISTING WATER MAIN AT TEN MILE AND AVALON, AND AVALON AND CEDAR WITH KUNA PUBLIC WORKS.

- SHEET KEYNOTES**
- 01 WATER MAIN PIPE - 12" - C-900 DR18 - (401.4.1.A.1.a)
 - 07 WATER MAIN FITTING - 12" - D.I. TEE - (401.4.1.B.1.c)
 - 08 WATER MAIN FITTING - 12" - 45° BEND - (401.4.1.B.1.d)
 - 14 WATER MAIN FITTING - 12" X 8" - D.I. REDUCER - (401.4.1.B.1.a)
 - 15 VALVE - 12" - GATE - (402.4.1.A.1.a)
 - 18 WATER MAIN PIPE - 8" - C-900 DR18 - (401.4.1.A.1.B)
 - 22 THRUST BLOCK; RE: ISPWC SD-403
 - 23 RECONNECT EXISTING WATER SERVICE
 - 25 REMOVE EXISTING GATE VALVE
 - 30 CONNECT TO EXISTING - (SP-100)
 - 32 MORA WASTEWAY CROSSING - (SP-300)
 - 37 RETAIN & PROTECT EXISTING (OVERHEAD UTILITY)
 - 48 REMOVAL OF EXISTING WATER LINE (201.4.1.E.1)
 - 49 ABANDON EXISTING WATER MAIN
 - 52 TYPE "P" SURFACE RESTORATION (HALF LANE) - (307.4.1.F.1.b)
 - 54 TYPE "P" SURFACE RESTORATION (ROAD CROSSING) - (307.4.1.F.1.e)
 - 57 TYPE "P" SURFACE RESTORATION (2.0' PATCH) - (307.4.1.F.1.d)



NO.	REVISIONS	BY	DATE

This document or any part thereof in detail or design concept is the personal property of Keller Associates, Inc. and shall not be copied in any form without the written authorization of Keller Associates, Inc.

DRAWN:	EWC	CHECKED:	JRW
DESIGNED:	SAN	APPROVED:	JRW
CAD NAME:		SCALE:	(Based on 22"x34" sheet) AS NOTED

ORIGINAL SIGNED BY:
JUSTIN WALKER
DATE ORIGINAL SIGNED: 01/10/11
ON FILE AT: KELLER ASSOCIATES INC.

INFORMATION ON THESE RECORD DRAWINGS IS BASED ON FIELD OBSERVATIONS AND INFORMATION FURNISHED BY OTHERS. DATE: 04-15-11

KELLER
associates
131 SW 5th Avenue, Suite A
Meridian, Idaho 83642
(208) 288-1992

CITY OF KUNA
763 W. AVALON
KUNA, IDAHO 83634

KUNA WATER SYSTEM IMPROVEMENTS PHASE II
BID PACKAGE #1 - W. AVALON ST. & CEDAR AVE.
WATERLINE PLAN & PROFILE
STA. 1+00 TO STA. 6+00

PROJECT NO. 206095-091
SHEET NO. C6.201

RECORD DRAWINGS

