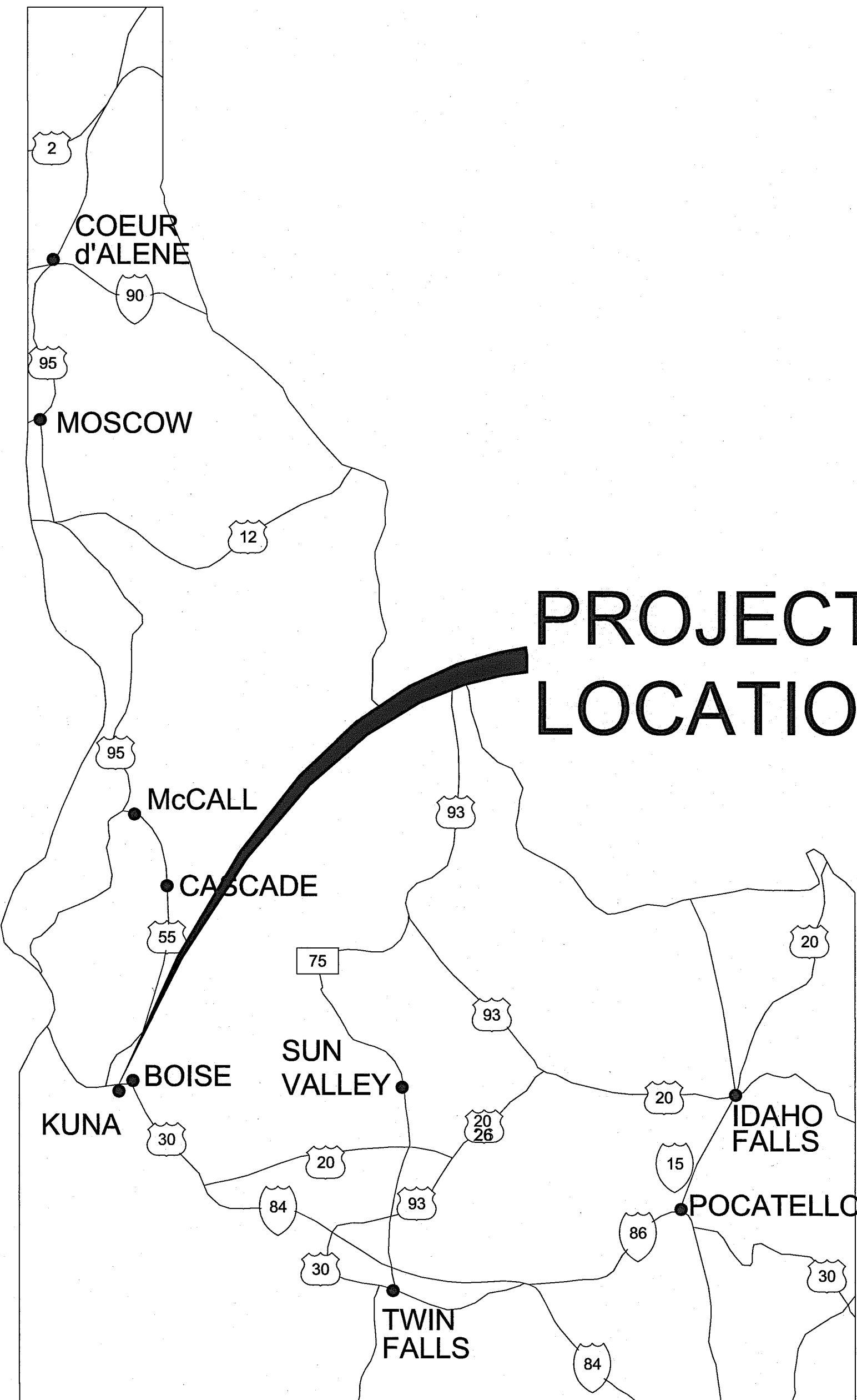


KUNA PRESSURE IRRIGATION SYSTEM IMPROVEMENTS

MAY - 2010 DRAWINGS BID PACKAGE #1

PORTER ROAD

PROJECT LOCATION



A3 LIST OF DRAWINGS

G-GENERAL

- G0.001 COVER SHEET
- G0.002 SYMBOLS AND LINE LEGEND
- G0.003 CIVIL NOTES

C-CIVIL

- C6.201 PLAN & PROFILE (STA. 1+00 TO 5+00)
- C6.202 PLAN & PROFILE (STA. 5+00 TO END)
- C11.101 TRAFFIC CONTROL

VERTICAL DATUM:

NAVD 88



A1 LOCATION MAP

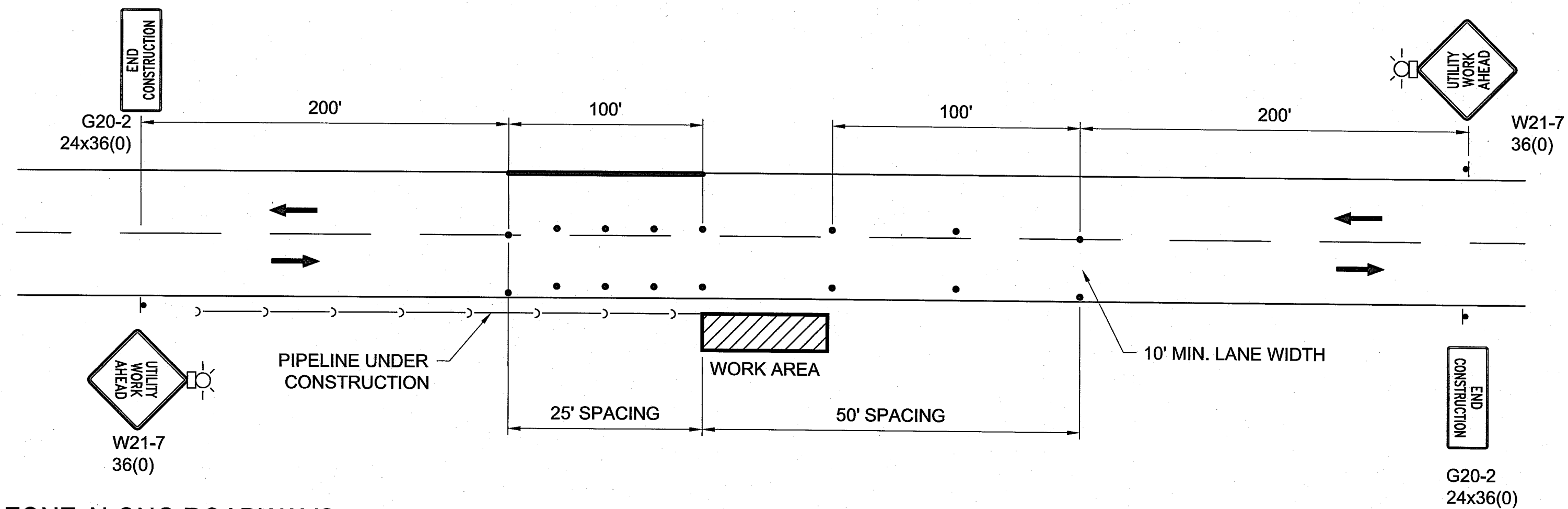
N.T.S.

A4 VICINITY MAP

N.T.S.

RECORD DRAWINGS

DRAWN: EWC				CHECKED: JRW				DESIGNED: SAN				APPROVED: JRW			
CAD NAME: G0.001.dwg				SCALE: (Based on 22"x34" sheet) AS NOTED				ORIGINAL SIGNED BY: JUSTIN WALKER DATE ORIGINAL SIGNED: 05/21/10 ON FILE AT: KELLER ASSOCIATES INC.				INFORMATION ON THESE RECORD DRAWINGS IS BASED ON FIELD OBSERVATIONS AND INFORMATION FURNISHED BY OTHERS. DATE: 10-27-10			
NO. REVISIONS BY DATE				This document or any part thereof in detail or design concept is the personal property of Keller Associates, Inc. and shall not be copied in any form without the written authorization of Keller Associates, Inc.				KELLER associates 131 SW 5th Avenue, Suite A Meridian, Idaho 83642 (208) 288-1992				CITY OF KUNA 763 W. AVALON KUNA, IDAHO 83634			
KUNA PRESSURE IRRIGATION SYSTEM BID PACKAGE #1 - PORTER ROAD				COVER SHEET				PROJECT NO. 210008				SHEET NO. G0.001			



WORK ZONE ALONG ROADWAYS
USING TWO WAY TRAFFIC AT WORK ZONE

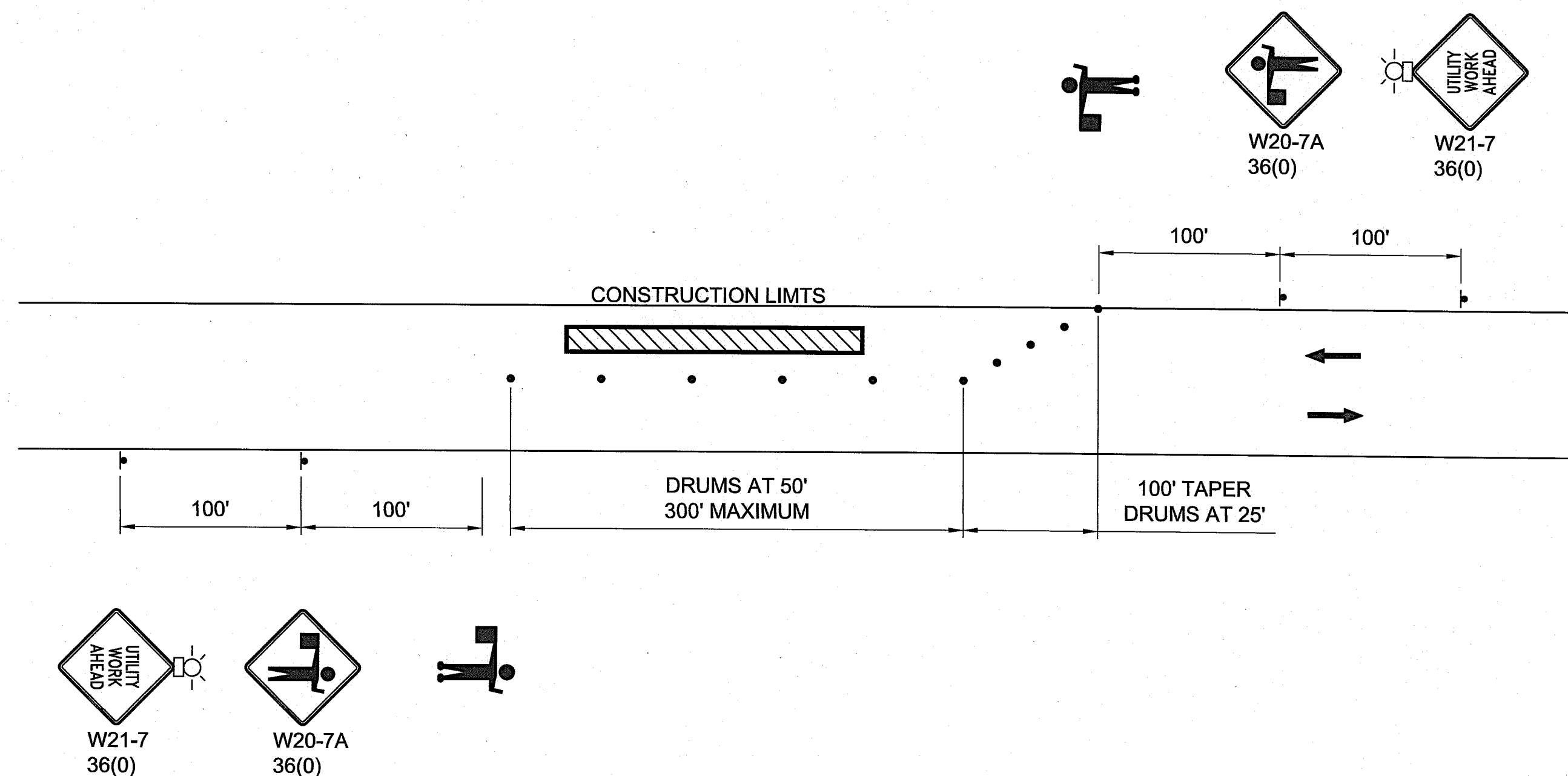
C1

GENERAL NOTES

1. THIS TRAFFIC CONTROL PLAN MAY BE MODIFIED IN THE FIELD BY THE ENGINEER.
2. THE CONTRACTOR SHALL MAINTAIN TRAFFIC THROUGH THE PROJECT AREA WHENEVER POSSIBLE FOR LOCAL TRAFFIC AND ACCESS TO ADJACENT PROPERTY.
3. ALL CONSTRUCTION SIGNS, BARRICADES, CONES AND DRUMS IN PLACE DURING HOURS OF DARKNESS SHALL HAVE A MINIMUM OF CLASS "A" REFLECTIVE SHEETING.
4. ALL CONSTRUCTION WARNING SIGNS SHALL HAVE TWO WARNING FLAGS. WARNING SIGNS IN PLACE DURING HOURS OF DARKNESS SHALL HAVE BATTERY OPERATED FLASHING WARNING LIGHTS IN ADDITION TO FLAGS.
5. ALL CONSTRUCTION SIGNING AND TRAFFIC CONTROLS WILL CONFORM TO THE LATEST EDITION OF THE MANUAL ON UNIFORM TRAFFIC CONTROL DEVICES.
6. CHANNELIZING DEVICES SHALL HAVE INTERVALS BETWEEN DEVICES AS SHOWN ON PLANS.
7. USE EXTREME CARE IN SITING CONSTRUCTION SIGNS SO AS NOT TO BLOCK OR OBSCURE ANY OTHER TRAFFIC CONTROL SIGNS FROM VIEW OF THE TRAVELING PUBLIC.
8. OTHER TRAFFIC CONTROL DEVICES, SUCH AS CONES AND OR BARRELS, WITHIN THE CONSTRUCTION WORKZONE TO PROTECT THE CONTRACTOR'S WORK AREA, ARE AT THE CONTRACTOR'S EXPENSE.
9. CONTRACTOR SHALL OBTAIN A RIGHT-OF-WAY PERMIT FORM ACHD PRIOR TO ANY WORK INSIDE OF THE RIGHT-OF-WAY.

LEGEND

- CONSTRUCTION WARNING SIGN LOCATION
- ⇄ DIRECTION OF TRAFFIC
- ⚡ WARNING LIGHT OR FLASHER
- BARREL OR OTHER APPROVED CHANNELIZING DEVICE
- ▨ WORK ZONE
- 🚧 FLAGGER



WORK ZONE ALONG ROADWAYS
USING ONE WAY TRAFFIC AT WORK ZONE

A1

RECORD DRAWINGS

DRAWN: EWC				CHECKED: JRW				DESIGNED: SAN				APPROVED: JRW			
NO. REVISIONS BY DATE				CAD NAME: C11.101.dwg				SCALE: (Based on 22"x34" sheet) N.T.S.				INFORMATION ON THESE RECORD DRAWINGS IS BASED ON FIELD OBSERVATIONS AND INFORMATION FURNISHED BY OTHERS. DATE: 10-27-10			
This document or any part thereof in detail or design concept is the personal property of Keller Associates, Inc. and shall not be copied in any form without the written authorization of Keller Associates, Inc.															
				131 SW 5th Avenue, Suite A Meridian, Idaho 83642 (208) 288-1992				CITY OF KUNA 763 W. AVALON KUNA, IDAHO 83634				KUNA PRESSURE IRRIGATION SYSTEM BID PACKAGE #1 - PORTER ROAD			
								TRAFFIC CONTROL PLAN				PROJECT NO. 210008			
												SHEET NO. C11.101			