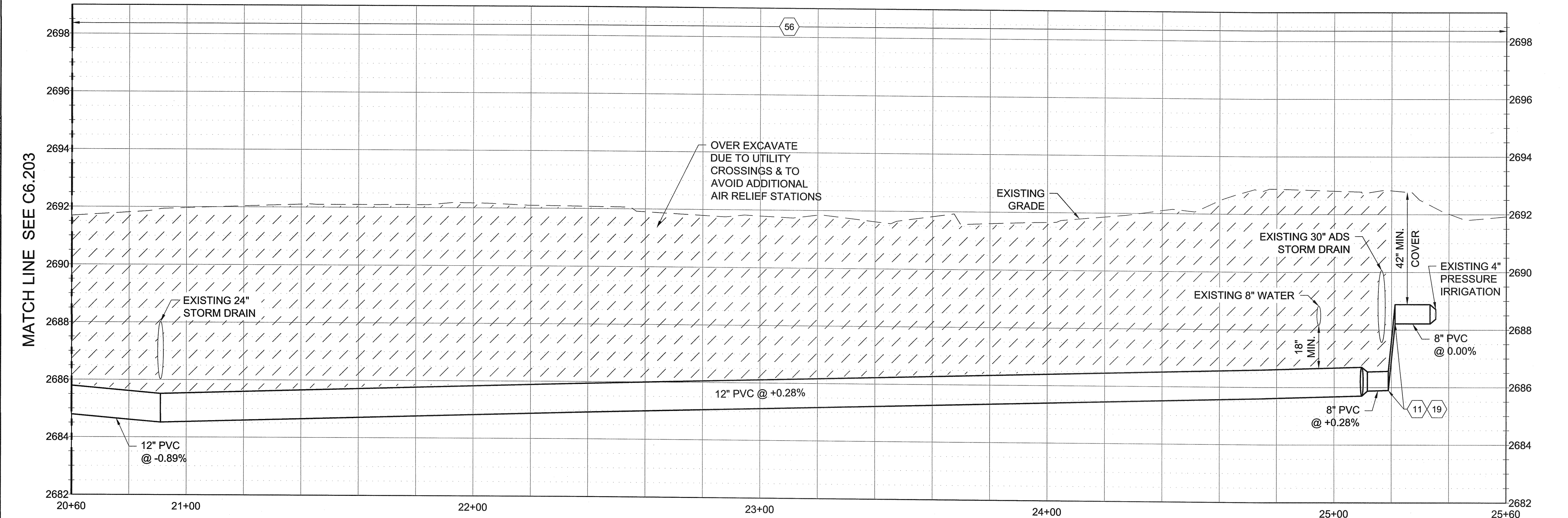


- GENERAL SHEET NOTES**
- DEFLECT PIPE INCREMENTALLY VERTICALLY & HORIZONTALLY TO ACHIEVE BEND AS NECESSARY. DO NOT EXCEED ONE-HALF OF MANUFACTURERS RECOMMENDATION.
 - CONTRACTOR TO POTHOLE EXISTING UTILITIES PRIOR TO CONSTRUCTION TO VERIFY LOCATION & DEPTH.

- SHEET KEYNOTES**
- 01 PRESSURE IRRIGATION MAIN PIPE - 12" - PVC, ASTM D2241, SDR21 - (901.4.1.A.1.a)
 - 02 PRESSURE IRRIGATION MAIN PIPE - 8" - PVC, ASTM D2241, SDR21 - (901.4.1.A.1.b)
 - 05 PRESSURE IRRIGATION MAIN FITTING - 4" - D.I. TEE - (901.4.1.B.1.b)
 - 06 PRESSURE IRRIGATION MAIN FITTING - 12"x8" - D.I. REDUCER TEE - (901.4.1.B.1.c)
 - 08 PRESSURE IRRIGATION MAIN FITTING - 8"x4" - D.I. REDUCER - (901.4.1.B.1.e)
 - 11 PRESSURE IRRIGATION MAIN FITTING - 8" - D.I. 45° BEND - (901.4.1.B.1.h)
 - 13 PRESSURE IRRIGATION MAIN FITTING - 12" - BLIND FLANGE
 - 14 PRESSURE IRRIGATION VALVE - 12" - GATE - (902.4.1.A.1.a)
 - 15 PRESSURE IRRIGATION VALVE - 8" - GATE - (902.4.1.A.1.b)
 - 17 PRESSURE IRRIGATION VALVE - 4" - GATE - (902.4.1.A.1.d)
 - 19 THRUST BLOCK; RE: ISPWC DETAIL SD-403
 - 20 CONNECT TO EXISTING - (SP-100)
 - 30 RETAIN & PROTECT EXISTING (UNDERGROUND UTILITY)
 - 32 POTABLE & NON-POTABLE WATER LINE SEPARATION, RE: ISPWC DETAIL SD-407
 - 56 MISCELLANEOUS SURFACE RESTORATION (LANDSCAPING) - (307.4.1.A.1)
 - 70 3" SANITARY SEWER REPAIR
 - 72 1" POLY REPAIR



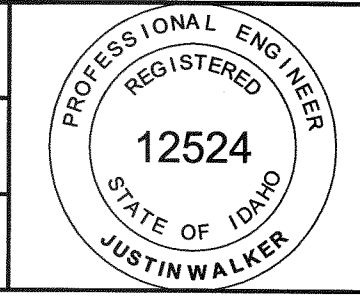
RECORD DRAWINGS

P:\210008\DESIGN\CAD\2010\06 RECORDING\PIR\PIR\BID PKG 2008.CU\UTILITY\C6.204.DWG 11/18/2010 11:57 AM

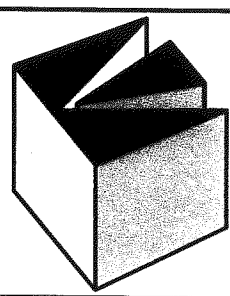
NO.	REVISIONS	BY	DATE

This document or any part thereof in detail or design concept is the personal property of Keller Associates, Inc. and shall not be copied in any form without the written authorization of Keller Associates, Inc.

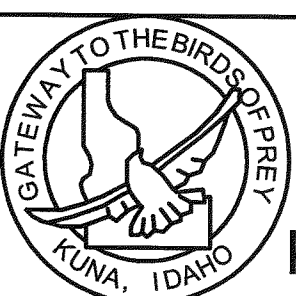
DRAWN:	EWC	CHECKED:	JRW
DESIGNED:	SAN	APPROVED:	JRW
CAD NAME:		SCALE:	(Based on 22"x34" sheet) AS NOTED



ORIGINAL SIGNED BY:
JUSTIN WALKER
DATE ORIGINAL SIGNED: 05/21/10
ON FILE AT: KELLER ASSOCIATES INC.
INFORMATION ON THESE RECORD DRAWINGS IS BASED ON FIELD OBSERVATIONS AND INFORMATION FURNISHED BY OTHERS. DATE: 10-27-10



KELLER
associates
131 SW 5th Avenue, Suite A
Meridian, Idaho 83642
(208) 288-1992



CITY OF KUNA
763 W. AVALON
KUNA, IDAHO 83634


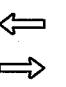


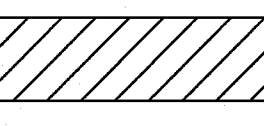

KUNA PRESSURE IRRIGATION SYSTEM
BID PACKAGE #2 - MOONHILL SUBDIVISION TO N. LINDER RD.
PRESSURE IRRIGATION LINE
STA. 20+60 TO END

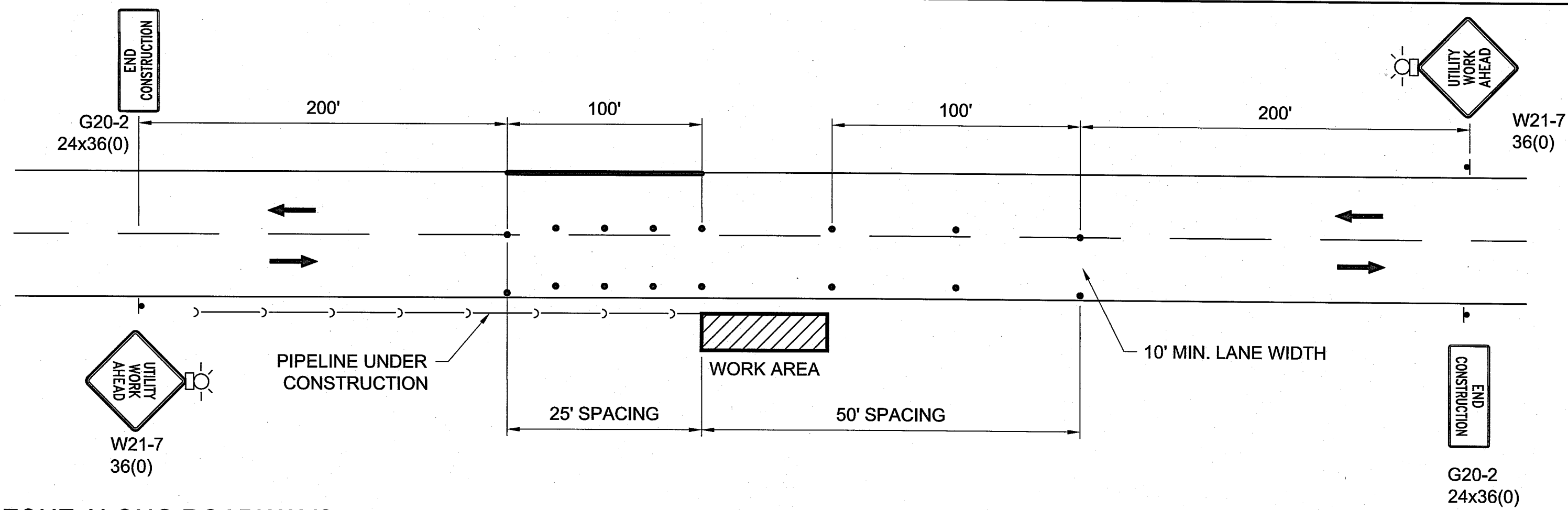
PROJECT NO. **210008**
SHEET NO. **C6.204**

GENERAL NOTES

1. THIS TRAFFIC CONTROL PLAN MAY BE MODIFIED IN THE FIELD BY THE ENGINEER.
2. THE CONTRACTOR SHALL MAINTAIN TRAFFIC THROUGH THE PROJECT AREA WHENEVER POSSIBLE FOR LOCAL TRAFFIC AND ACCESS TO ADJACENT PROPERTY.
3. ALL CONSTRUCTION SIGNS, BARRICADES, CONES AND DRUMS IN PLACE DURING HOURS OF DARKNESS SHALL HAVE A MINIMUM OF CLASS "A" REFLECTIVE SHEETING.
4. ALL CONSTRUCTION WARNING SIGNS SHALL HAVE TWO WARNING FLAGS. WARNING SIGNS IN PLACE DURING HOURS OF DARKNESS SHALL HAVE BATTERY OPERATED FLASHING WARNING LIGHTS IN ADDITION TO FLAGS.
5. ALL CONSTRUCTION SIGNING AND TRAFFIC CONTROLS WILL CONFORM TO THE LATEST EDITION OF THE MANUAL ON UNIFORM TRAFFIC CONTROL DEVICES.
6. CHANNELIZING DEVICES SHALL HAVE INTERVALS BETWEEN DEVICES AS SHOWN ON PLANS.
7. USE EXTREME CARE IN SITING CONSTRUCTION SIGNS SO AS NOT TO BLOCK OR OBSCURE ANY OTHER TRAFFIC CONTROL SIGNS FROM VIEW OF THE TRAVELING PUBLIC.
8. OTHER TRAFFIC CONTROL DEVICES, SUCH AS CONES AND OR BARRELS, WITHIN THE CONSTRUCTION WORKZONE TO PROTECT THE CONTRACTOR'S WORK AREA, ARE AT THE CONTRACTOR'S EXPENSE.
9. CONTRACTOR SHALL OBTAIN A RIGHT-OF-WAY PERMIT FORM ACHD PRIOR TO ANY WORK INSIDE OF THE RIGHT-OF-WAY.

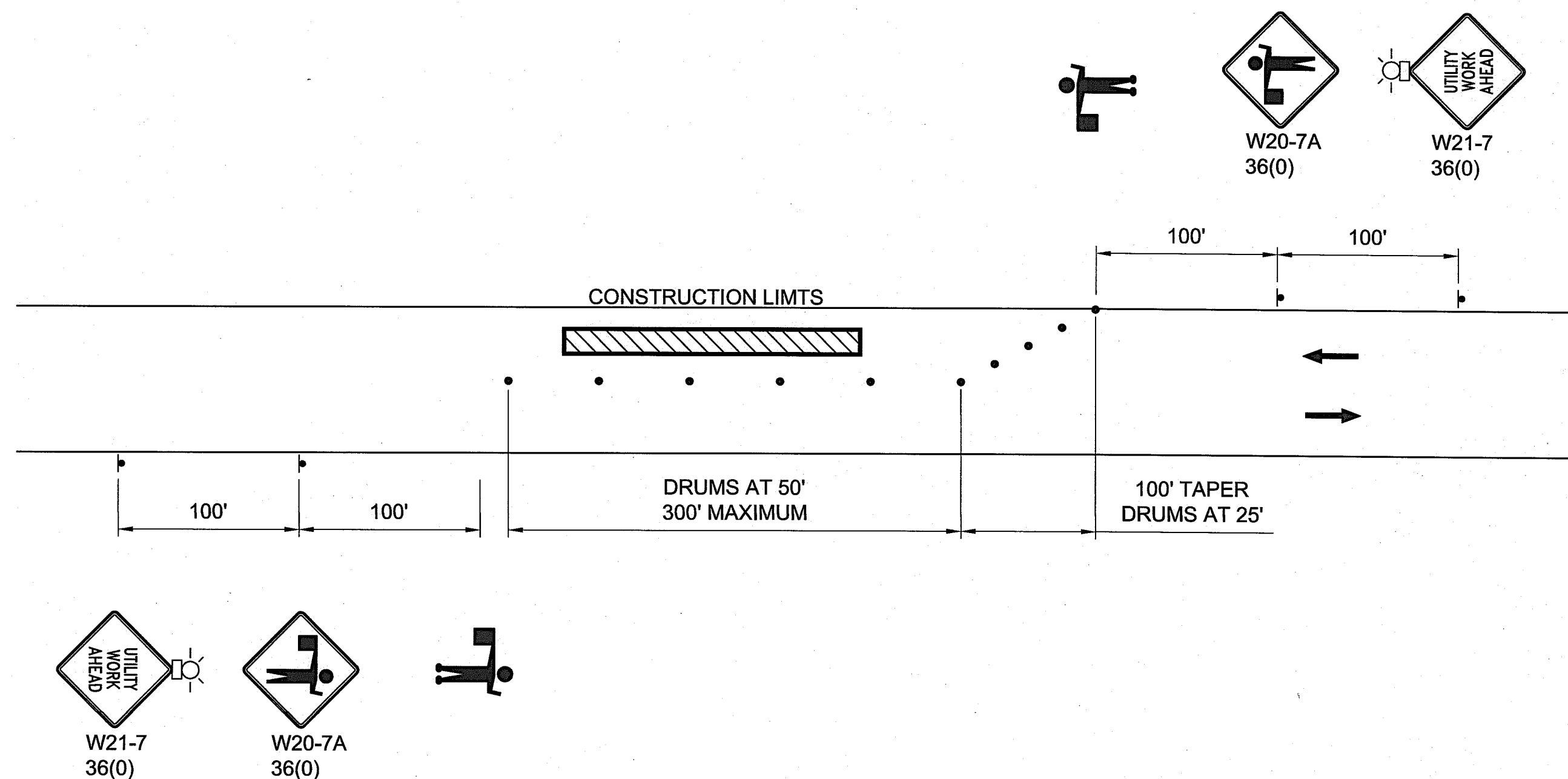
LEGEND

-  CONSTRUCTION WARNING SIGN LOCATION
-  DIRECTION OF TRAFFIC
-  WARNING LIGHT OR FLASHER
-  BARREL OR OTHER APPROVED CHANNELIZING DEVICE
-  WORK ZONE
-  FLAGGER



**WORK ZONE ALONG ROADWAYS
USING TWO WAY TRAFFIC AT WORK ZONE**

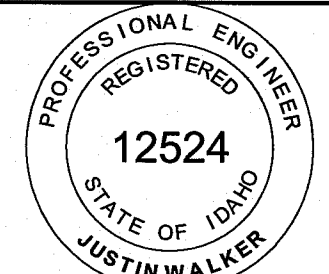
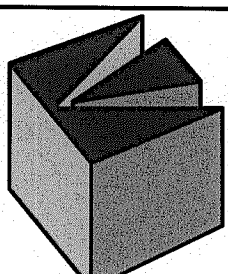
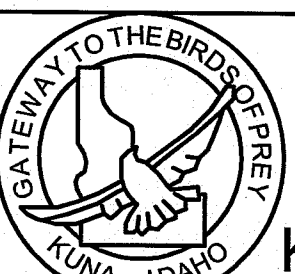
C1



**WORK ZONE ALONG ROADWAYS
USING ONE WAY TRAFFIC AT WORK ZONE**

A1

RECORD DRAWINGS

DRAWN: EWC		CHECKED: JRW			ORIGINAL SIGNED BY: JUSTIN WALKER DATE ORIGINAL SIGNED: 05/21/10 ON FILE AT: KELLER ASSOCIATES INC.	CITY OF KUNA 763 W. AVALON KUNA, IDAHO 83634		KUNA PRESSURE IRRIGATION SYSTEM BID PACKAGE #2 - KAY ST. & MOONHILL SUB - LINDER RD.		PROJECT NO. 210008
DESIGNED: SAN		APPROVED: JRW				INFORMATION ON THESE RECORD DRAWINGS IS BASED ON FIELD OBSERVATIONS AND INFORMATION FURNISHED BY OTHERS. DATE: 10-27-10		TRAFFIC CONTROL PLAN		SHEET NO. C11.101
NO. REVISIONS BY DATE This document or any part thereof in detail or design concept is the personal property of Keller Associates, Inc. and shall not be copied in any form without the written authorization of Keller Associates, Inc.		CAD NAME: C11.101.dwg SCALE: (Based on 22"x34" sheet) N.T.S.		 KELLER associates 131 SW 5th Avenue, Suite A Meridian, Idaho 83642 (208) 288-1992		 GATEWAY TO THE BIRDS OF PREY KUNA, IDAHO		KUNA PRESSURE IRRIGATION SYSTEM BID PACKAGE #2 - KAY ST. & MOONHILL SUB - LINDER RD.		SHEET NO. C11.101

P:\210008\design\CAD 2010\008 RECORD\07 PRR\010 PKG 2111 OF TRAFFIC\C11.101.dwg DATE: 11/23/2010 TIME: 10:54:43 AM