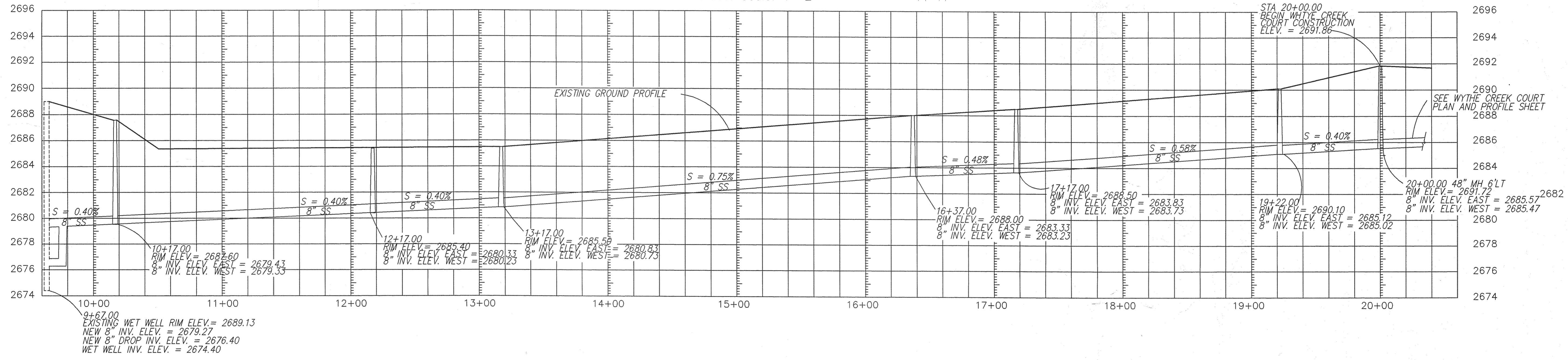


- PE --- Permanent Easement
- Boundary line
- Existing Fence
- 100' 2' Contour Interval
- 1' Contour Interval
- Water Meter
- Fire Hydrant
- Electrical Junction Box
- Water Meter
- Sanitary Sewer Clean Out
- Area Light
- Telephone Riser
- Power Pole
- x 1000.00 Natural Ground with Elevation
- Mixed Landscaping

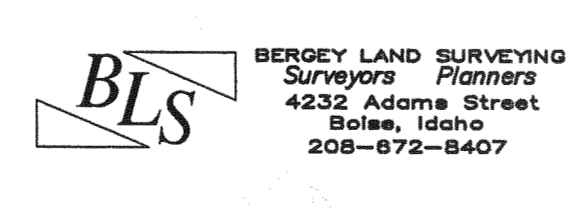
- 1 RETAIN AND PROTECT EXISTING WATER LINE.
 - 2 REMOVE EXISTING 6" SS LINE.
 - 3 CONSTRUCT STANDARD MANHOLE TYPE-A PER ISWPC SD-501.
 - 4 CONNECT ALL EXISTING SS SERVICE LINES TO NEW 8" SS PER ISWPC SD-511.
 - 5 CONSTRUCT DROP MANHOLE PER ISWPC SD-504.
- CONTRACTOR TO VERIFY LOCATION OF ALL EXISTING SERVICES AND TO PERPETUATE ALL EXISTING CONNECTIONS.

Orchard
 Staff
 11/18/03



REV.	DESCRIPTION	BY	DATE
1	west end ss route	amc	11/18/03

CEMENT FALLS PARK SUBDIVISION



ENGINEERING with a MISSION
 ANGELA M COMISH, P.E.
 1523 W. HAYS, BOISE, ID 83702
 PHONE: (208) 385-9381



PLAN AND PROFILE OF SEWER EXTENSION

DESCRIPTION:
SEWER EXTENSION.DWG

DRAWN BY: CRT	CHECKED BY: AMC
SCALE: 1" = 40	
DATE: NOVEMBER 18, 2003	
JOB NUMBER	SHEET 5 OF 5