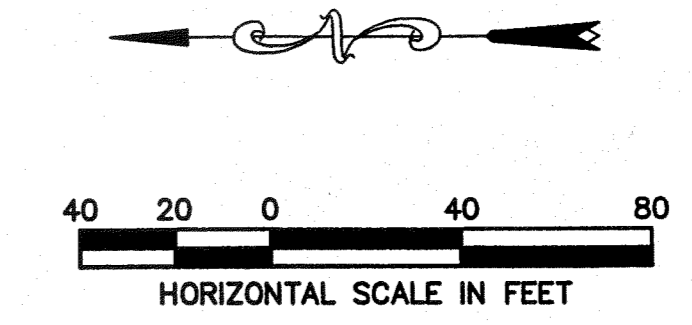
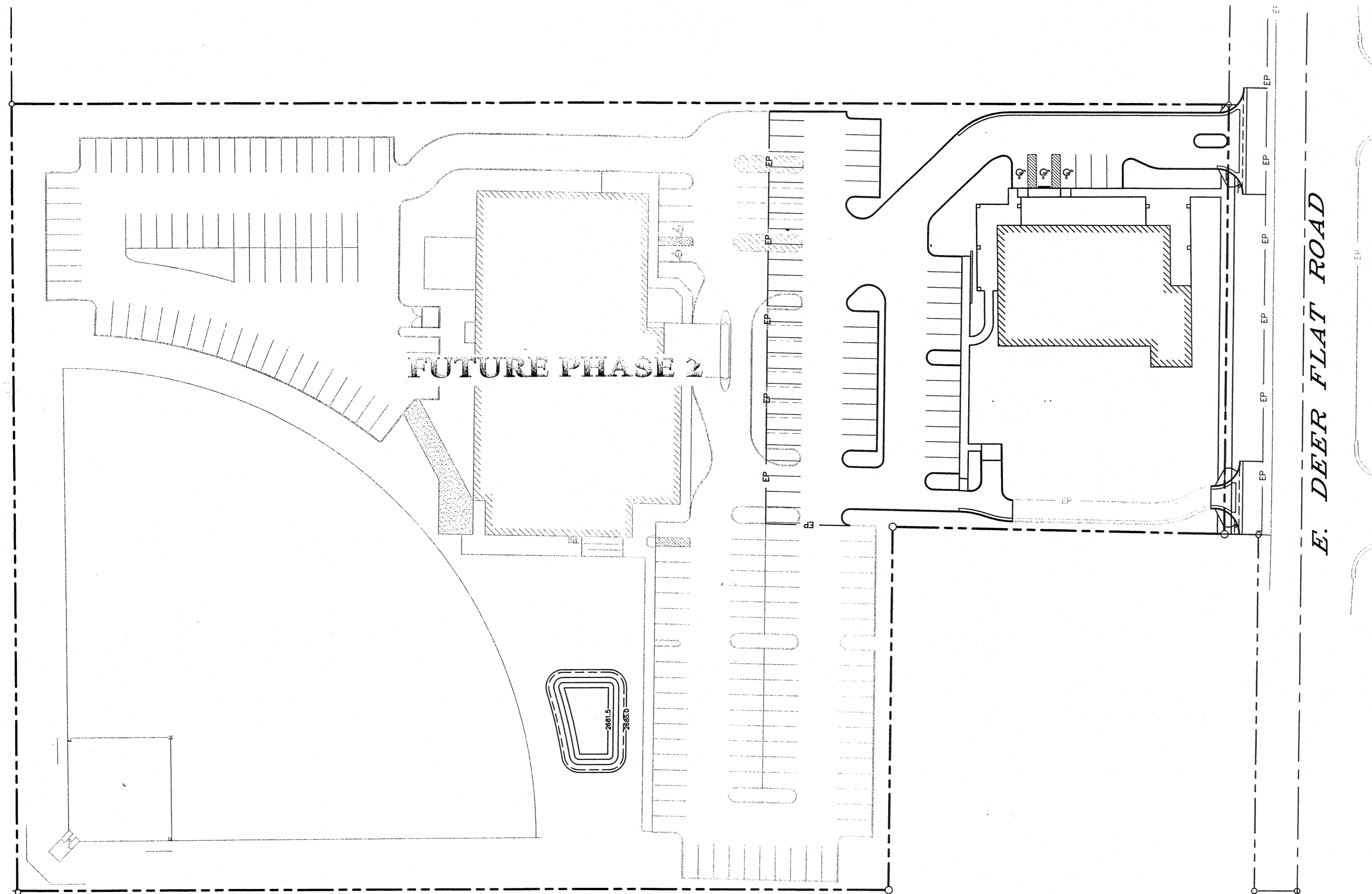
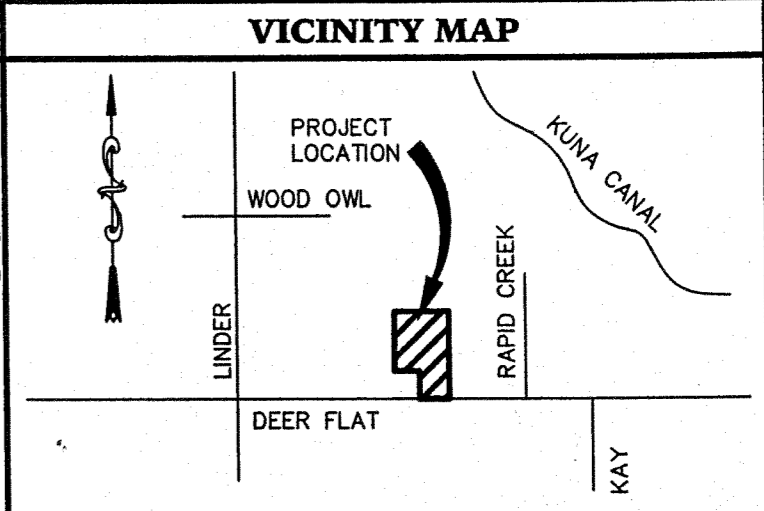


CONSTRUCTION PLANS for KUNA LIFE CENTER 2006



- GENERAL NOTES**
- ALL WORK TO BE DONE IN ACCORDANCE WITH THE 2005 EDITION OF THE IDAHO STANDARDS FOR PUBLIC WORKS CONSTRUCTION (ISPC), THE CITY OF KUNA PUBLIC WORKS, BENCH SEWER DISTRICT AND THE ADA COUNTY HIGHWAY DISTRICT STANDARDS AND SPECIFICATIONS. NO EXCEPTION TO THE ADA COUNTY HIGHWAY DISTRICT POLICY STANDARDS OR THE ISPC WILL BE ALLOWED UNLESS SPECIFICALLY AND PREVIOUSLY APPROVED IN WRITING.
 - ALL CONTRACTORS WORKING WITHIN THE PROJECT BOUNDARIES ARE RESPONSIBLE FOR COMPLIANCE WITH ALL APPLICABLE SAFETY LAWS OF ANY JURISDICTIONAL BODY. THE CONTRACTOR SHALL BE RESPONSIBLE FOR ALL BARRICADES, SAFETY DEVICES AND CONTROL OF TRAFFIC IN AND AROUND THE CONSTRUCTION AREA. ALL TRAFFIC CONTROL SHALL BE IN ACCORDANCE WITH THE MUTCD.
 - ALL MATERIALS FURNISHED FOR THE PROJECT MUST MEET THE MINIMUM REQUIREMENTS OF THE APPROVING AGENCIES OR AS SET FORTH HEREIN, WHICHEVER IS MORE RESTRICTIVE.
 - WORK SUBJECT TO APPROVAL BY ANY POLITICAL SUBDIVISION MUST BE APPROVED PRIOR TO (A) BACKFILLING TRENCHES FOR PIPE, (B) PLACE OF AGGREGATE BASE, (C) PLACING OF CONCRETE, (D) PLACING OF ASPHALT PAVING. WORK DONE WITHOUT SUCH APPROVAL SHALL NOT RELIEVE THE CONTRACTOR FROM THE RESPONSIBILITY OF PERFORMING THE WORK IN AN ACCEPTABLE MANNER.
 - ALL CONTRACTORS WORKING WITHIN THE PUBLIC RIGHT-OF-WAY ARE REQUIRED TO SECURE A RIGHT-OF-WAY CONSTRUCTION PERMIT TO ACHD AT LEAST 24 HOURS PRIOR TO ANY CONSTRUCTION. THE CONTRACTOR SHALL BE RESPONSIBLE FOR PREPARING ALL TRAFFIC CONTROL PLANS AND TRAFFIC CONTROL DEVICES, INCLUDING PEDESTRIAN TRAFFIC.
 - CONTRACTOR SHALL NOTIFY THE PROJECT SURVEYOR A MINIMUM OF 48 HOURS PRIOR TO NEEDING CONSTRUCTION SURVEYING. THE CONTRACTOR SHALL PRESERVE AND PROTECT ALL CONSTRUCTION STAKES.
 - THE CONTRACTOR MUST KEEP A SEPARATE SET OF CONSTRUCTION PLAN TO RECORD AS-BUILT INFORMATION DURING CONSTRUCTION. AT THE END OF CONSTRUCTION, THIS SET OF PLANS MUST BE SUBMITTED TO THE PROJECT ENGINEER FOR REVIEW AND APPROVAL.
 - IT IS EXPRESSLY UNDERSTOOD THAT ALL PRODUCTS AND SERVICES ARE GUARANTEED FOR A MINIMUM OF ONE YEAR FROM THE DATE OF FINAL PAYMENT.
 - THE LOCATION OF EXISTING UTILITIES ARE SHOWN IN AN APPROXIMATE WAY ONLY. THE CONTRACTOR SHALL COMPLY WITH IDAHO CODE, CHAPTER 22, TITLE 55 REGARDING UNDERGROUND FACILITIES DAMAGE PREVENTION. THE CONTRACTOR SHALL DETERMINE THE EXACT LOCATION OF ALL EXISTING UTILITIES BEFORE COMMENCING WORK. THE CONTRACTOR AGREES TO BE FULLY RESPONSIBLE FOR ANY AND ALL DAMAGES WHICH MIGHT BE OCCASIONED AS A RESULT OF FAILURE TO EXACTLY LOCATE AND PRESERVE ANY AND ALL UTILITIES. THE CONTRACTOR SHALL CONTACT THE APPROPRIATE UTILITY COMPANIES AND DIGLINE (1-800-342-1585) FOR EXACT LOCATION A MINIMUM OF 48 HOURS PRIOR TO DIGGING.



SHEET INDEX

C1.0	COVER SHEET
C1.1	DIMENSION SITE PLAN
C2.0	UTILITY PLAN
C3.0	GRADING & DRAINAGE PLAN
C4.0	NOTES & DETAILS
C5.0	ESC/SWPPP

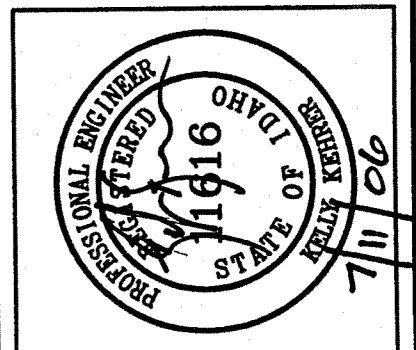
- LEGEND**
- FOUND BRASS CAP
 - BENCH MARK
 - FOUND 5/8" REBAR
 - FOUND 1/2" REBAR
 - PROPERTY LINE
 - - - OFF-SITE PROPERTY LINE
 - - - CENTERLINE
 - - - EASEMENT LINE
 - - - LOT LINE
- PROPOSED FEATURES**
- W WATER LINE
 - SS SEWER LINE
 - SD STORM DRAIN LINE
 - FENCE LINE
 - WATER METER
 - ⊗ SAND AND GREASE TRAP
 - ⊗ CATCH BASIN
 - SEWER CLEAN-OUT
 - FIRE HYDRANT
 - SANITARY SEWER MANHOLE
 - WATER VALVE
 - WATER BLOW-OFF
 - LIGHT POLE
 - 2713.5 FINISH CONTOUR (0.5' INT.)
 - STRUCTURE

- PROPOSED FEATURES**
- EP EDGE OF PAVEMENT
 - X FENCE LINE
 - SS SEWER LINE
 - W WATER LINE
 - OHP OVERHEAD POWER
 - SD STORM DRAIN
 - DITCH
 - ⊗ MANHOLE
 - VALVE
 - FIRE HYDRANT
 - ⊗ CATCH BASIN
 - STRUCTURE
 - 2713 EXISTING CONTOUR (0.5' INT.)
 - ⊗ SAND AND GREASE TRAP

OWNER/DEVELOPER
KUNA LIFE CENTER
CONTACT: RICK CHASON
PO BOX 328
KUNA, IDAHO 83634

Plans Are Accepted For Public Street Construction

By connecting, stamping and signing the improvement plans, the Registered Engineer assures the District that the plans conform to all District policies and standards. Violences or omissions must be specifically and conspicuously corrected by the District in writing. Acceptance of the improvement plans by the District does not relieve the contractor of any responsibility.
BY: *[Signature]* DATE: 11/30/06
ADA COUNTY HIGHWAY DISTRICT

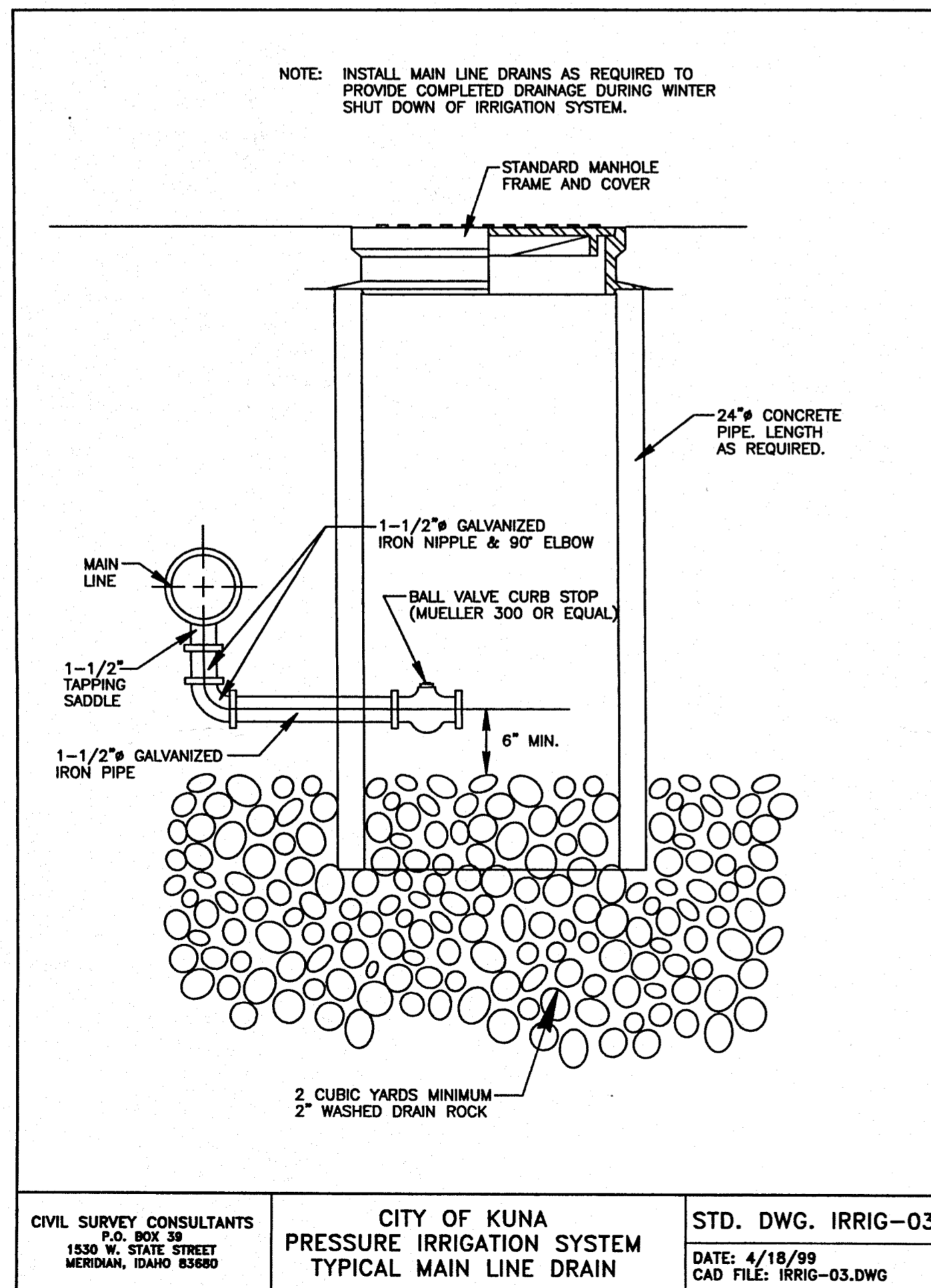


Rennison Fodrea, Inc.
Engineers • Surveyors • Planners
Eagle Office
128 S. Eagle Rd., Suite B
Kuna, ID 83632-2440
Office: 208.932.2440
Fax: 208.932.2441

COVER SHEET
for
KUNA LIFE CENTER
LOT 5, BLOCK 1, SANDPOINT HEIGHTS SUB.,
SITUATED IN SECTION 13, T. 2N., R. 1 W., B.M.,
CITY OF KUNA, ADA COUNTY, IDAHO

NO.	DATE	REVISIONS	P.M.
1.	06/12/06		
2.	07/03/06		
DATE		P.M.	
03/07/06		KSK	
P.N.		CAD	
1619		KSK	
SHEET NO.			
C1.0			

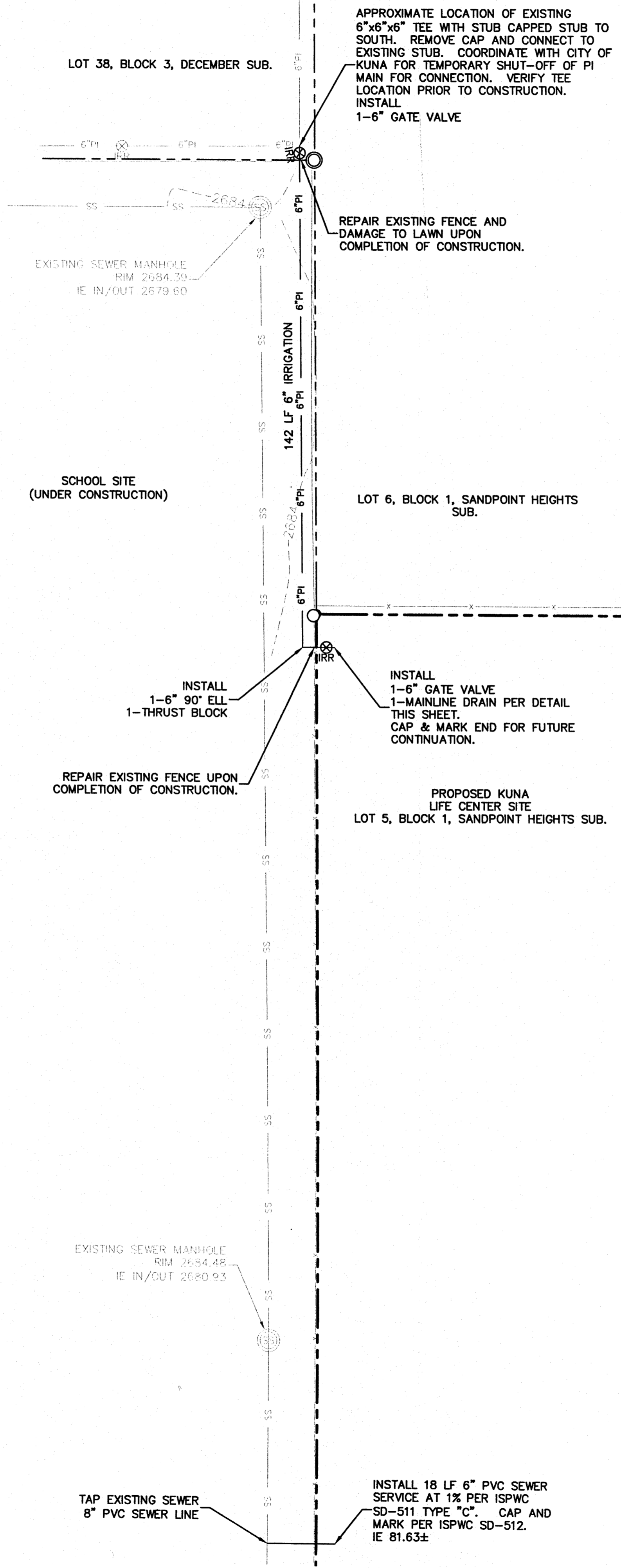
Jim... Please Review & Comment 8/7/06



CIVIL SURVEY CONSULTANTS
P.O. BOX 35
1530 W. STATE STREET
MERIDIAN, IDAHO 83680

CITY OF KUNA
PRESSURE IRRIGATION SYSTEM
TYPICAL MAIN LINE DRAIN

STD. DWG. IRRIG-03
DATE: 4/18/99
CAD FILE: IRRIG-03.DWG



HORIZONTAL SCALE IN FEET

PRESSURE IRRIGATION NOTES	VICINITY MAP
<ol style="list-style-type: none"> PRESSURE IRRIGATION SHALL BE INSTALLED PER THE 2005 ISPCW DIVISION 90D. IRRIGATION PIPE SHALL BE GASKETED PVC ASTM-D2241 CLASS 160, SDR-26 OR BETTER AND AS APPROVED BY THE PROJECT ENGINEER. PIPE SHALL BE IDENTIFIED BY FINDER TAPE PER SECTION 901 ISPCW OR WITH COLORED PIPE PURPLE TINTED SUCH AS PANTONE COLOR No. 512 OR EQUIVALENT. ALL MAINS SHALL BE INSTALLED WITH NO. 12 COPPER FINDER WIRE. THRUST BLOCKS ARE REQUIRED AT TEES, VALVES, BENDS, AND DEAD ENDS ON ALL PIPE AND FITTINGS WITH GASKETED JOINTS, EXCEPT TEES LEADING TO SINGLE SERVICE RISERS. THRUST BLOCKS ARE ALSO REQUIRED AT ELBOWS AND TEES BEFORE AND AFTER ANY GASKETED TYPE JOINT AND WHERE SHOWN ON DRAWINGS. CONCRETE SHALL HAVE A MIN. 28 DAY COMPRESSIVE STRENGTH OF 2500 PSI. THRUST BLOCKS ARE TO BE PLACED AGAINST UNDISTURBED EARTH AND SHALL HAVE THE FOLLOWING BEARING AREAS UNLESS SPECIFIED OTHERWISE: 4" FITTINGS AND SMALLER - 1.3 SQ FT, 6" FITTINGS - 2.7 SQ FT, 8" FITTINGS - 4.8 SQ FT. ALL TRENCH EXCAVATION AND CONSTRUCTION ACTIVITIES SHALL CONFORM TO THE REQUIREMENTS OF THE OCCUPATIONAL SAFETY AND HEALTH ADMINISTRATION (OSHA). IT IS THE CONTRACTOR'S RESPONSIBILITY TO BE FAMILIAR WITH THE REQUIREMENTS AND BE IN FULL COMPLIANCE. PERFORM A HYDROSTATIC PRESSURE AND LEAKAGE TEST TO CONFORM TO ISPCW SECTION 401.3.6 FOR A DURATION OF 30 MINUTES. COORDINATE WITH CITY OF KUNA FOR TEST OBSERVATION. SLOPE PROPOSED MAINLINE TO PROPOSED MAINLINE DRAIN AT END OF RUN. 	
<ol style="list-style-type: none"> ALL WORK TO BE DONE IN ACCORDANCE WITH THE LATEST EDITION OF THE IDAHO STANDARDS FOR PUBLIC WORKS CONSTRUCTION (ISPCW), THE CITY OF KUNA PUBLIC WORKS, AND THE ADA COUNTY HIGHWAY DISTRICT STANDARDS AND SPECIFICATIONS. NO EXCEPTION TO THE ADA COUNTY HIGHWAY DISTRICT POLICY STANDARDS OR THE ISPCW WILL BE ALLOWED UNLESS SPECIFICALLY AND PREVIOUSLY APPROVED IN WRITING. ALL CONTRACTORS WORKING WITHIN THE PROJECT BOUNDARIES ARE RESPONSIBLE FOR COMPLIANCE WITH ALL APPLICABLE SAFETY LAWS OF ANY JURISDICTIONAL BODY. THE CONTRACTOR SHALL BE RESPONSIBLE FOR ALL BARRICADES, SAFETY DEVICES AND CONTROL OF TRAFFIC IN AND AROUND THE CONSTRUCTION AREA. ALL TRAFFIC CONTROL SHALL BE IN ACCORDANCE WITH THE MUTCD. ALL MATERIALS FURNISHED FOR THE PROJECT MUST MEET THE MINIMUM REQUIREMENTS OF THE APPROVING AGENCIES OR AS SET FORTH HEREIN, WHICHEVER IS MORE RESTRICTIVE. WORK SUBJECT TO APPROVAL BY ANY POLITICAL SUBDIVISION MUST BE APPROVED PRIOR TO (A) BACKFILLING TRENCHES FOR PIPE, (B) PLACE OF AGGREGATE BASE, (C) PLACING OF CONCRETE, (D) PLACING OF ASPHALT PAVING. WORK DONE WITHOUT SUCH APPROVAL SHALL NOT RELIEVE THE CONTRACTOR FROM THE RESPONSIBILITY OF PERFORMING THE WORK IN AN ACCEPTABLE MANNER. THE CONTRACTOR MUST KEEP A SEPARATE SET OF CONSTRUCTION PLANS TO RECORD AS-BUILT INFORMATION DURING CONSTRUCTION. AT THE END OF CONSTRUCTION, THIS SET OF PLANS MUST BE SUBMITTED TO THE PROJECT ENGINEER FOR REVIEW AND APPROVAL. IT IS EXPRESSLY UNDERSTOOD THAT ALL PRODUCTS AND SERVICES ARE GUARANTEED FOR A MINIMUM OF ONE YEAR FROM THE DATE OF FINAL PAYMENT. THE LOCATION OF EXISTING UTILITIES ARE SHOWN IN AN APPROXIMATE WAY ONLY. THE CONTRACTOR SHALL COMPLY WITH IDAHO CODE, CHAPTER 22, TITLE 55 REGARDING UNDERGROUND FACILITIES DAMAGE PREVENTION. THE CONTRACTOR SHALL DETERMINE THE EXACT LOCATION OF ALL EXISTING UTILITIES BEFORE COMMENCING WORK. THE CONTRACTOR AGREES TO BE FULLY RESPONSIBLE FOR ANY AND ALL DAMAGES WHICH MIGHT BE OCCASIONED AS A RESULT OF FAILURE TO EXACTLY LOCATE AND PRESERVE ANY AND ALL UTILITIES. THE CONTRACTOR SHALL CONTACT THE APPROPRIATE UTILITY COMPANIES AND DIGLINE (1-800-342-1585) FOR EXACT LOCATION A MINIMUM OF 48 HOURS PRIOR TO DIGGING. THE CONTRACTOR SHALL REMAIN IN FULL COMPLIANCE WITH ALL APPLICABLE POLICIES, ORDINANCES OR OTHER REQUIREMENTS OF ALL AGENCIES, MUNICIPALITY OR POLITICAL SUBDIVISION HAVE JURISDICTION. 	<p style="text-align: center;">LEGEND</p> <p>○ FOUND 5/8" REBAR ○ FOUND 1/2" REBAR --- PROPERTY LINE --- OFF-SITE PROPERTY LINE</p> <p style="text-align: center;">PROPOSED FEATURES</p> <p>6"PI 6" PRESSURE IRRIGATION IRRIGATION VALVE 6"PI 6" PRESSURE IRRIGATION FENCE LINE SS SEWER LINE MANHOLE -2684- EXISTING CONTOUR IRRIGATION VALVE</p> <p style="text-align: center;">GENERAL NOTES</p>
<p>OWNER/DEVELOPER</p> <p>KUNA LIFE CENTER CONTACT: RICK CHASON PO BOX 328 KUNA, IDAHO 83634</p>	

Rennison Fodrea, Inc.
Engineers • Surveyors • Planners

Cascade Office: 208.392.3410
 Boise Office: 208.392.3411
 Coeur d'Alene Office: 208.392.3412
 P.O. Box 188
 Kuna, Idaho 83634
 Fax: 208.392.3410

PRESSURE IRRIGATION EXTENSION
for
KUNA LIFE CENTER

LOT 5, BLOCK 1, SANDPOINT HEIGHTS SUB.,
SITUATED IN SECTION 13, T. 2N., R. 1 W., B.M.,
CITY OF KUNA, ADA COUNTY, IDAHO

NO.	DATE	REVISIONS

DATE: 04/25/06 P.M. KSK
P.N. 1619 CAD KSK

SHEET NO.
1 of 1

RECEIVED
 APR 27 2006
 KUNA P & Z