

RECORD DOCUMENTS

These Record Documents are based upon the marked-up record drawings, addenda, change orders, and other data furnished by the Contractor. The Consultant does not assume any liability for errors or omissions in the Record Documents. The Consultant's responsibility is limited to the construction of the project as shown on the Record Documents. The Consultant cannot and does not warrant their accuracy, except for that information verified by the Engineer.

Signature
 Date: 7/10/03

CIVIL SURVEY CONSULTANTS
 P.O. BOX 39
 1530 W. STATE STREET
 MERIDIAN, IDAHO 83680

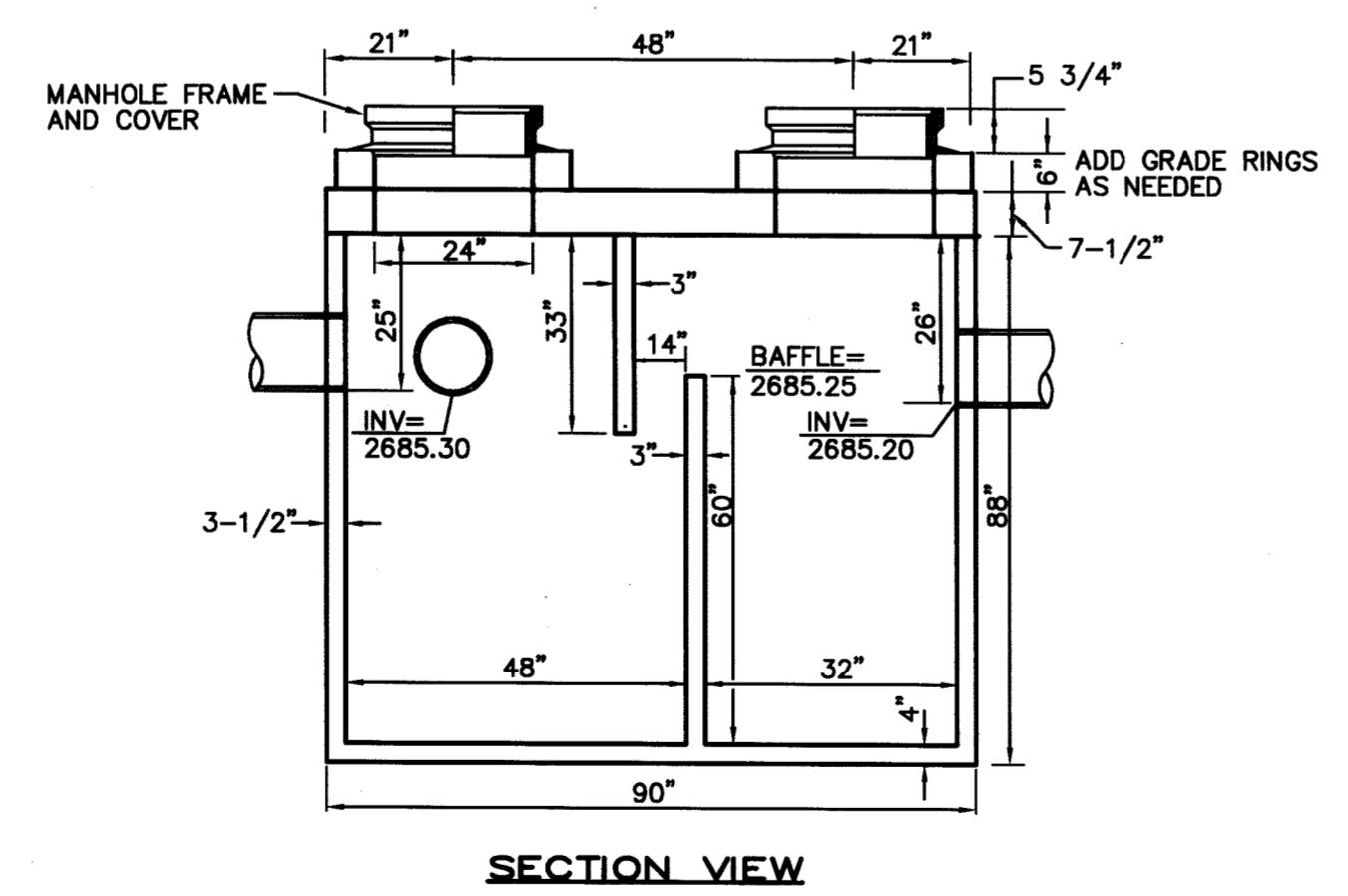
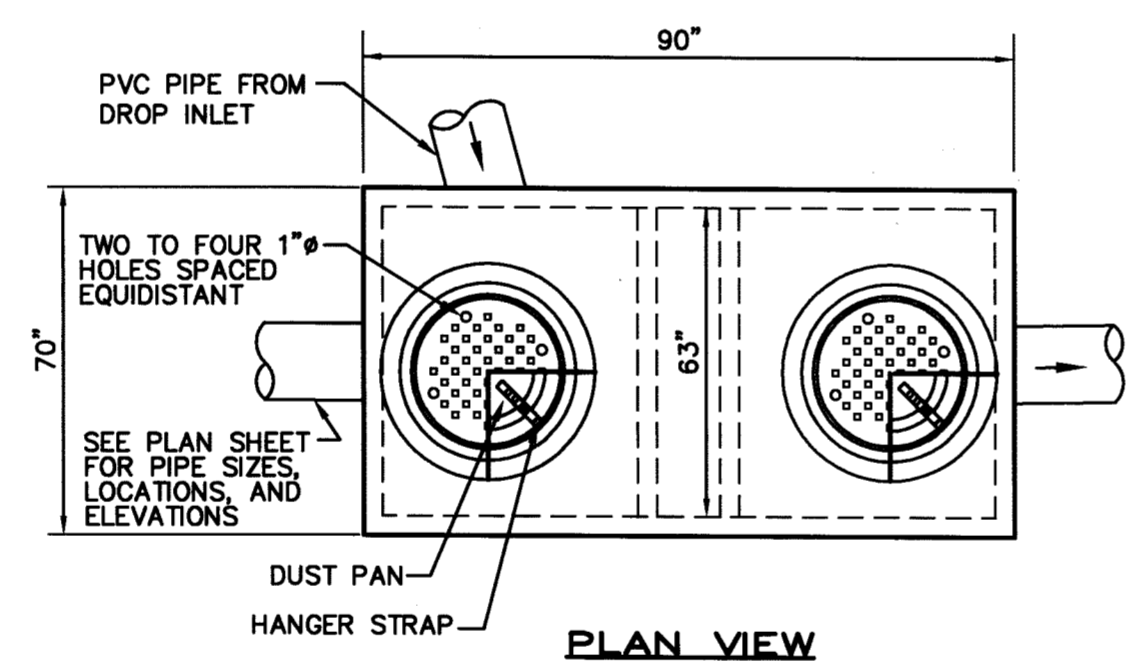
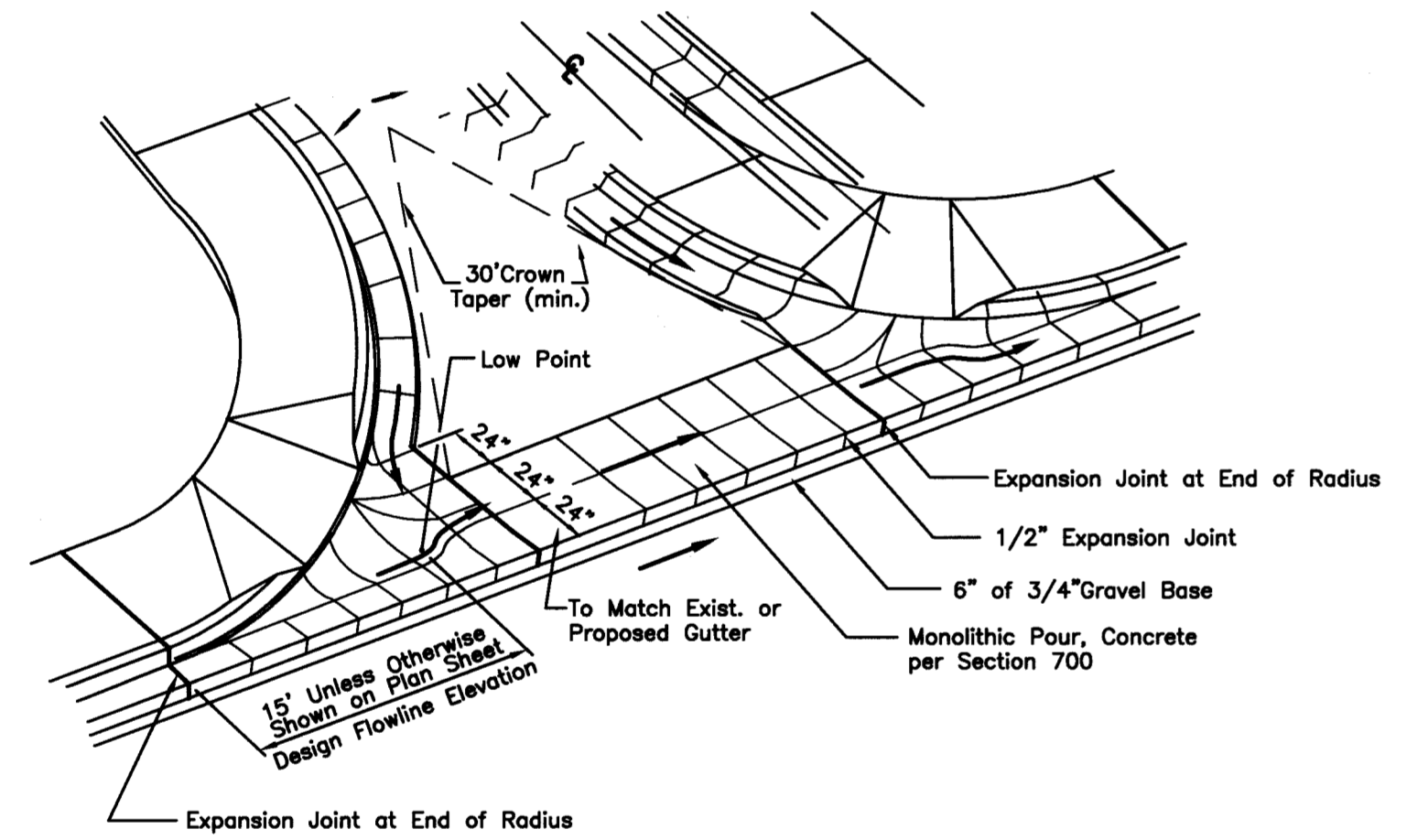
CITY OF KUNA PRESSURE IRRIGATION SYSTEM

STD. DWG. IRRIG-01
 DATE: 4/18/99
 CAD FILE: IRRIG-01.DWG

CIVIL SURVEY CONSULTANTS
 100 SOUTH ARDEN WAY
 SUITE 101
 MERIDIAN, IDAHO 83642

CITY OF KUNA PRESSURE IRRIGATION SYSTEM TYPICAL LOT SERVICE

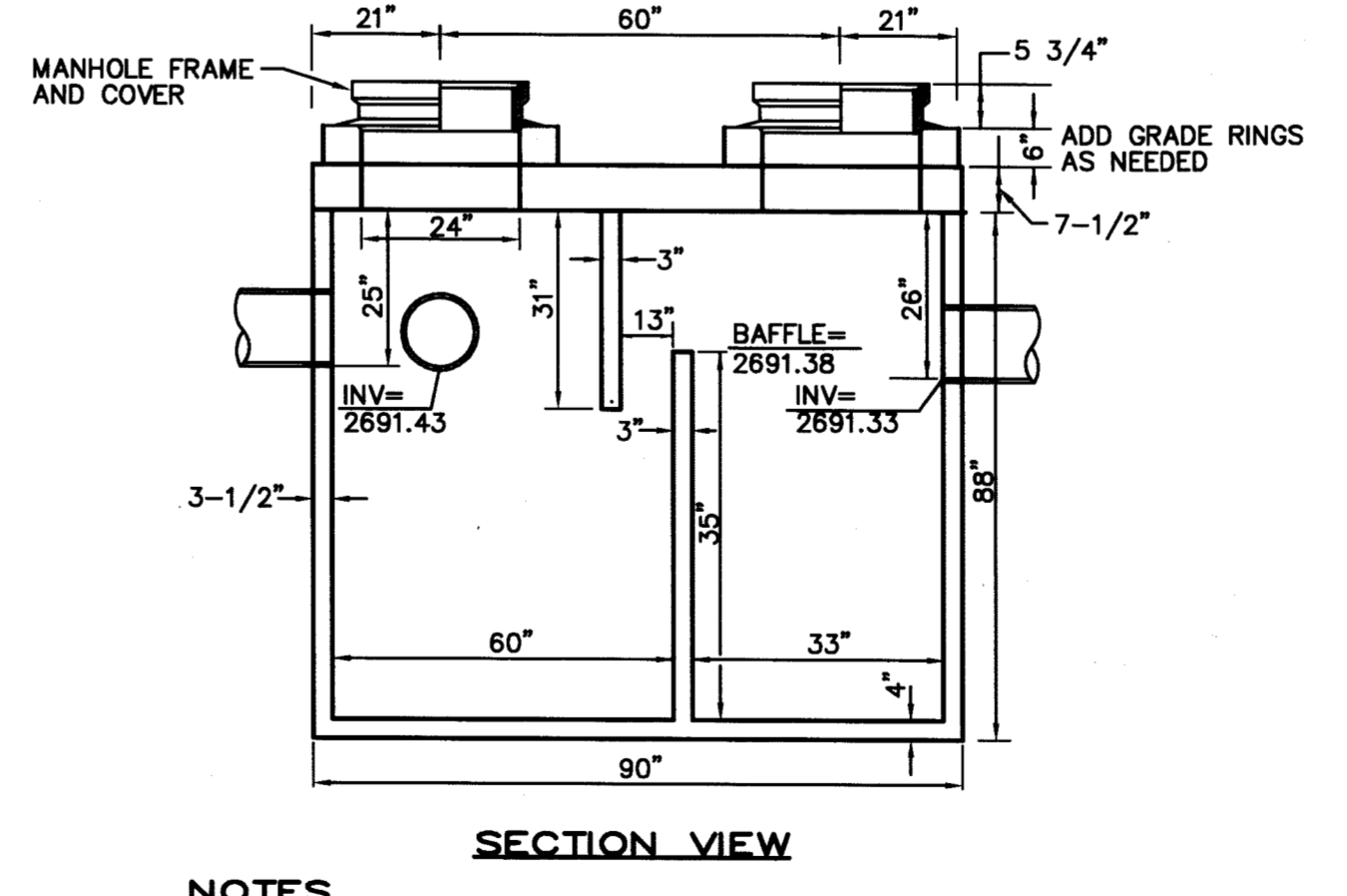
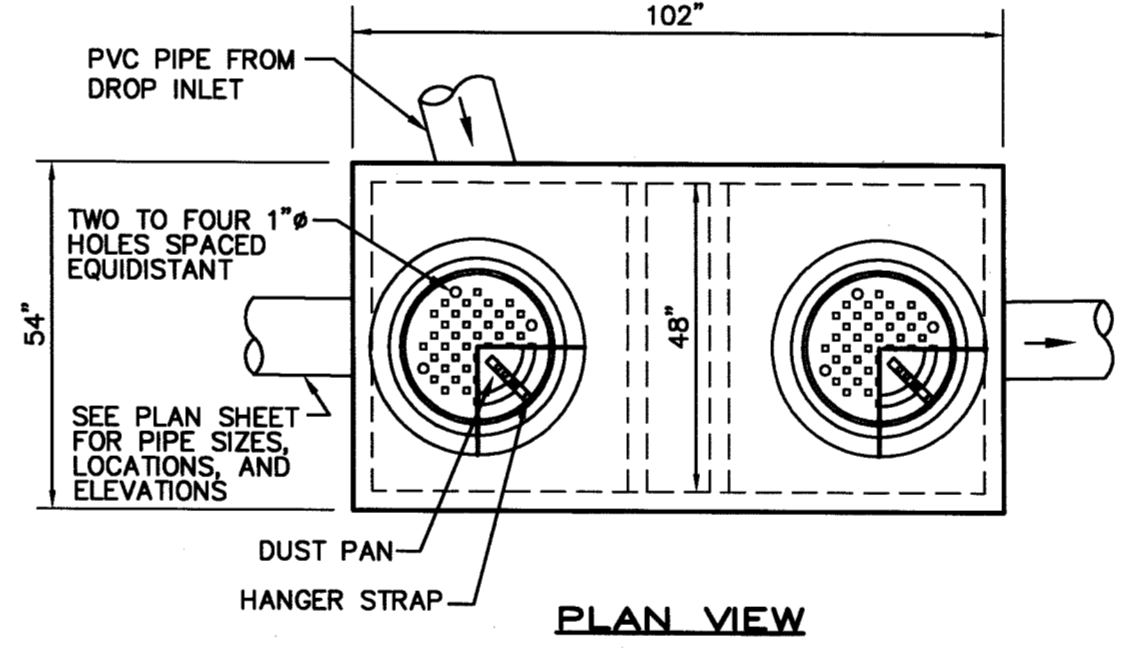
STD. DWG. IRRIG-02
 DATE: 6/13/01
 CAD FILE: IRRIG-02.DWG



NOTES

1. SEE PLAN SHEETS FOR PIPE SIZES, ELEVATIONS, AND LOCATIONS
 2. 1500 SAND AND GREASE TRAP SHALL BE DESIGNED TO SUPPORT AN HS-25 TRAFFIC LOAD.

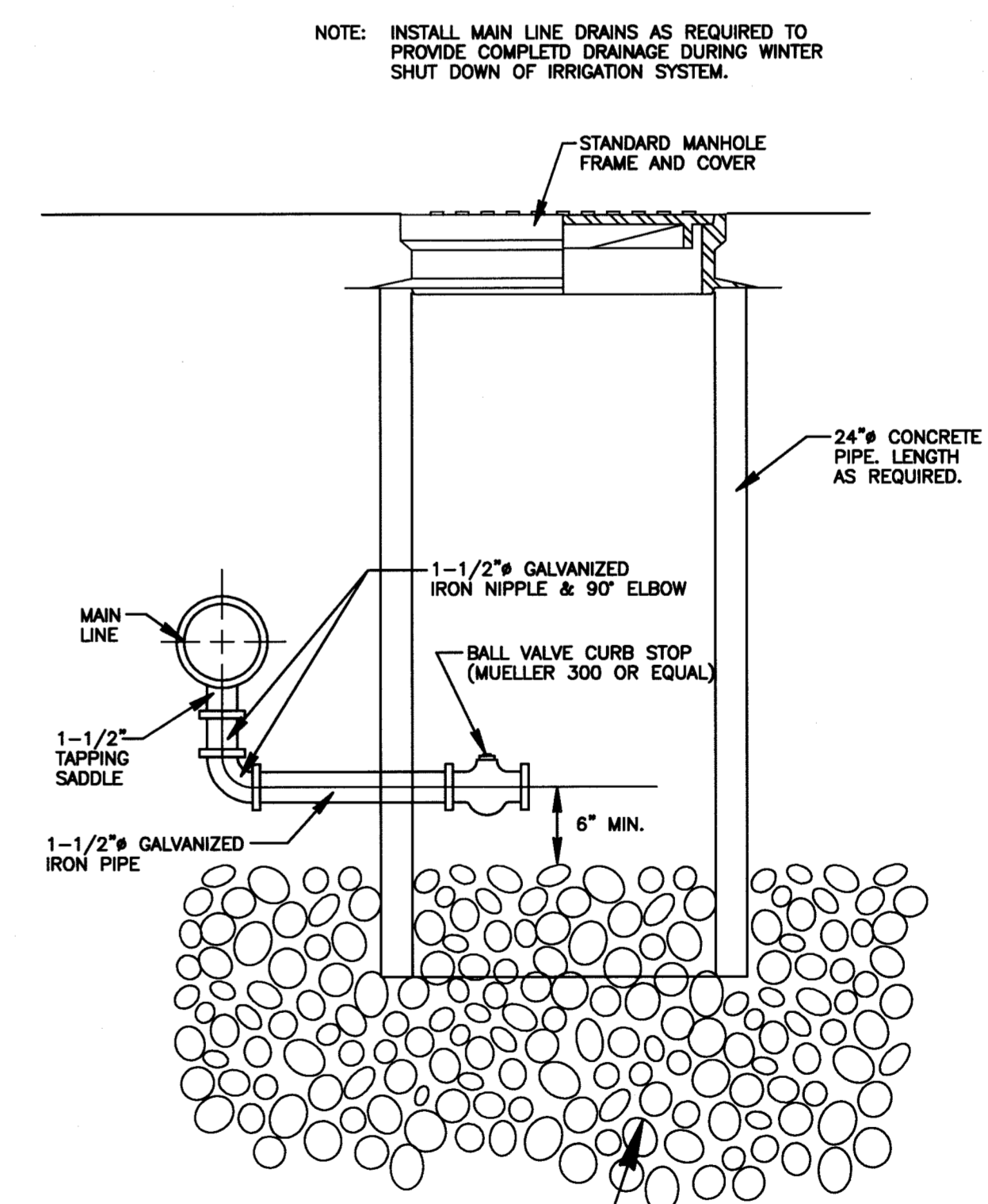
1500 GALLON SAND AND GREASE TRAP DETAIL (SG#1) (TRAFFIC RATED)



NOTES

1. SEE PLAN SHEETS FOR PIPE SIZES, ELEVATIONS, AND LOCATIONS
 2. 1000 SAND AND GREASE TRAP SHALL BE DESIGNED TO SUPPORT AN HS-25 TRAFFIC LOAD.

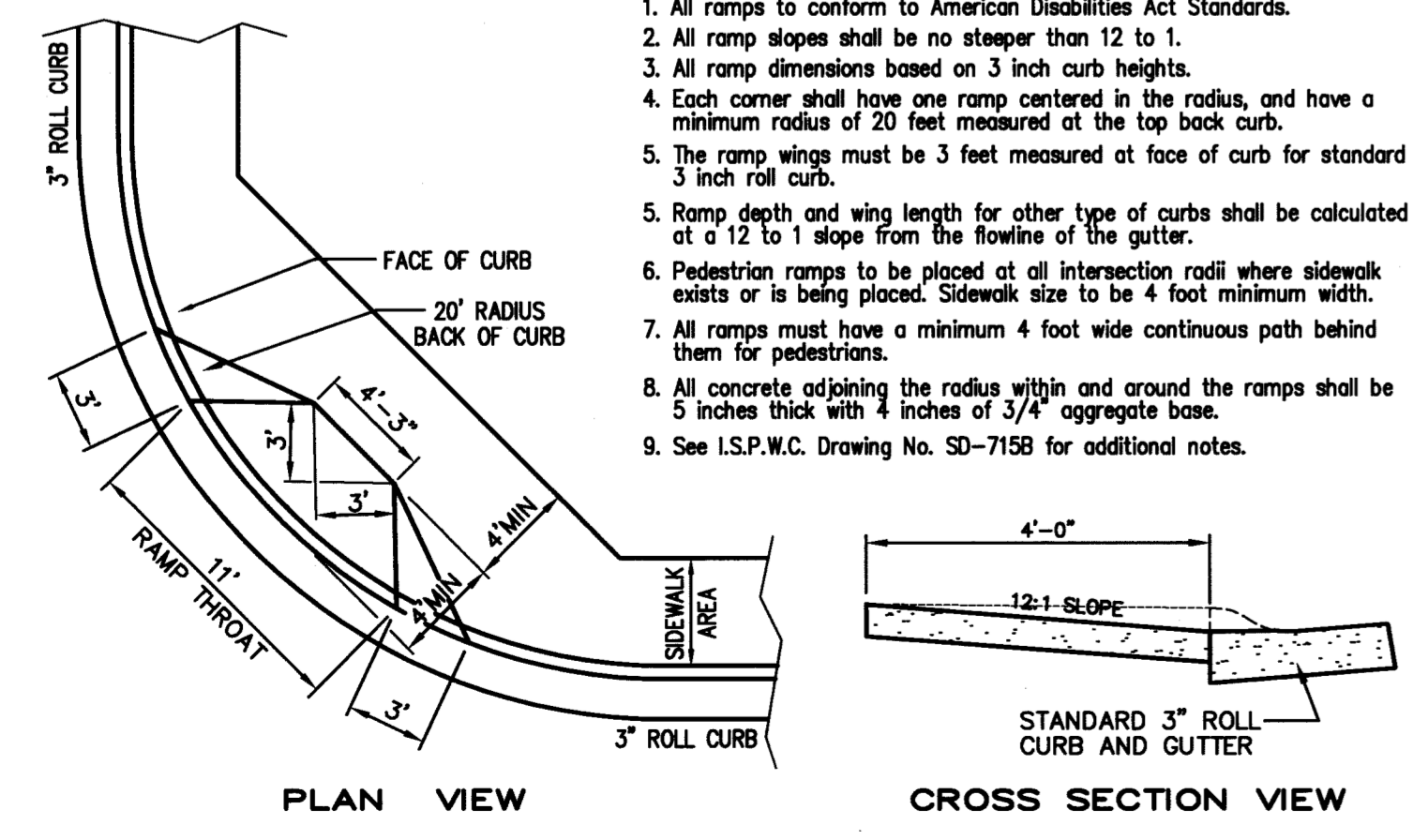
1000 GALLON SAND AND GREASE TRAP DETAIL (SG#2) (TRAFFIC RATED)



CIVIL SURVEY CONSULTANTS
 P.O. BOX 39
 1530 W. STATE STREET
 MERIDIAN, IDAHO 83680

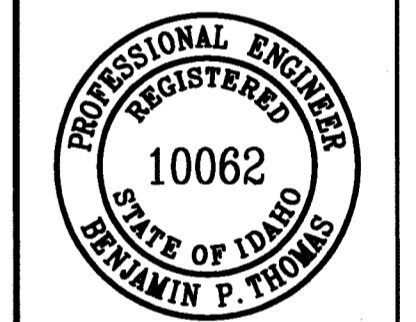
CITY OF KUNA PRESSURE IRRIGATION SYSTEM TYPICAL MAIN LINE DRAIN

STD. DWG. IRRIG-03
 DATE: 4/18/99
 CAD FILE: IRRIG-03.DWG



APPROVED FOR CONSTRUCTION
 DATE: APRIL 11, 2003

REVISION	02/25/03	BY:	BPT
	03/20/03		SFT
	04/11/03		BPT



BRIGGS ENGINEERING, INC.

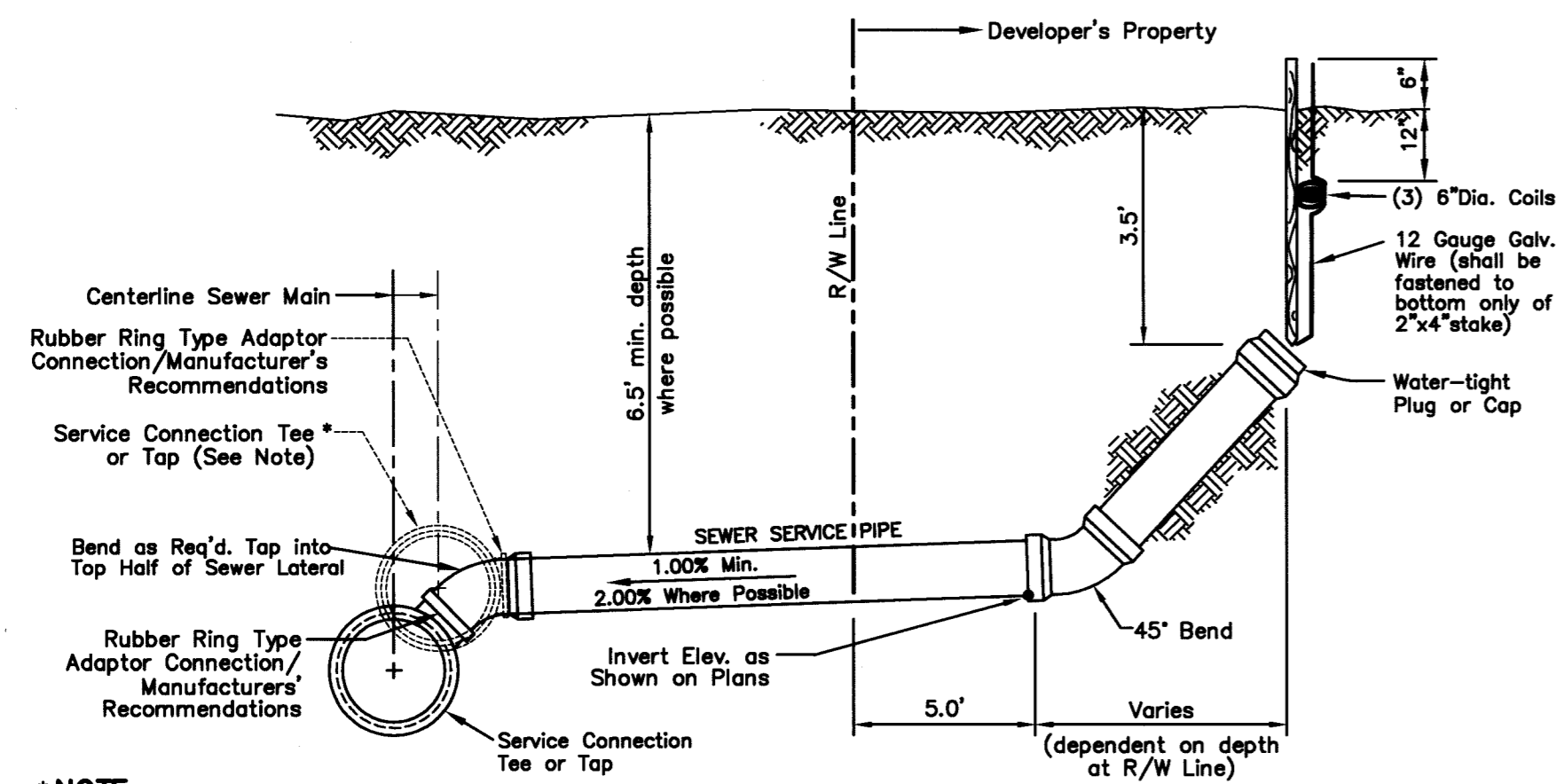
REGISTERED PROFESSIONAL ENGINEER
 STATE OF IDAHO
 10062

BRIGGS ENGINEERS PLANNERS SURVEYORS
 1800 W. OVERLAND ROAD • BOISE, IDAHO 83705 • (208)344-9700
 These drawings, or any portion thereof, shall not be used on any Project or extension of this Project except by written agreement from Briggs Engineering, Inc.

SUTTER'S MILL SUBDIVISION NO. 3

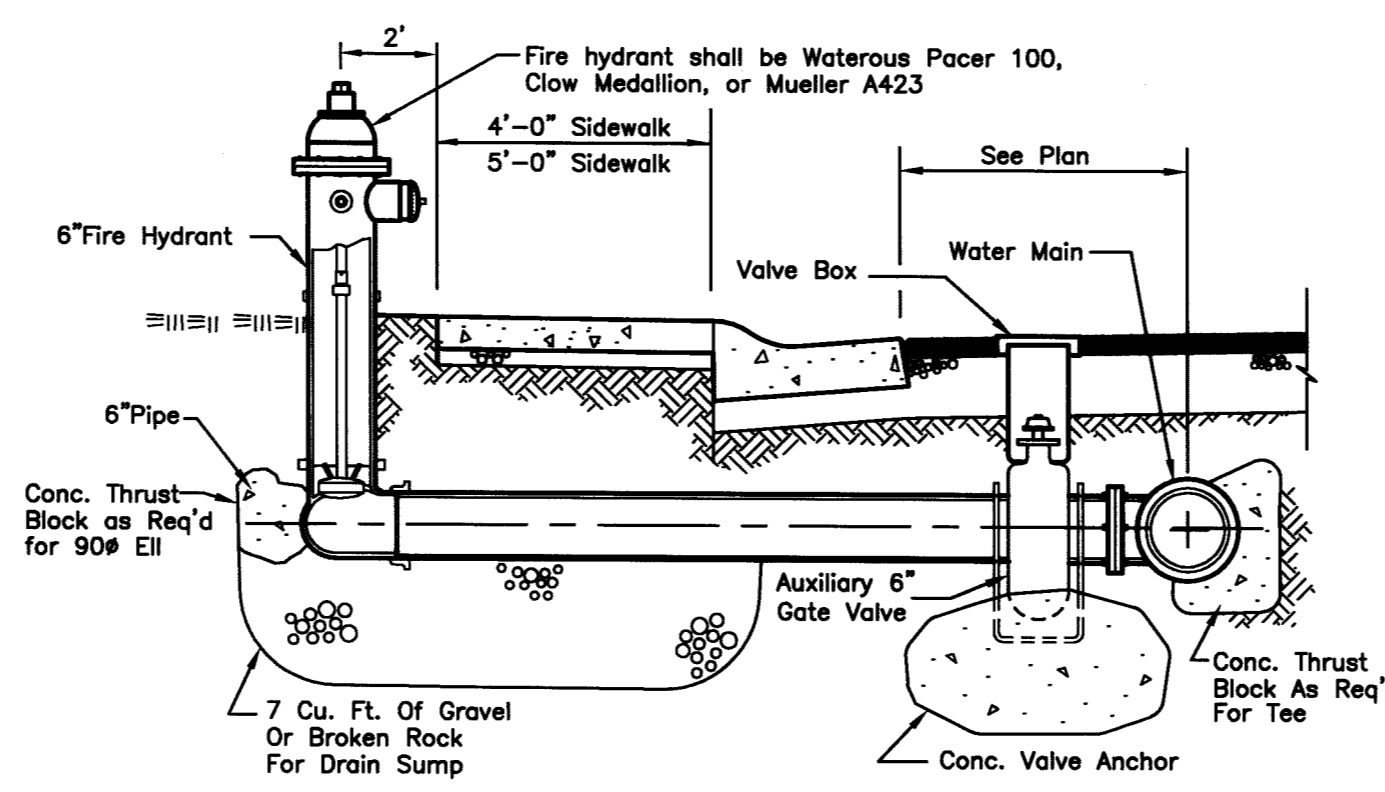
STREET, STORM DRAIN & IRRIGATION DETAILS

DWG NO. 20504-DTL
 SCALE: N.T.S.
 DATE: 12/27/02
 SFT

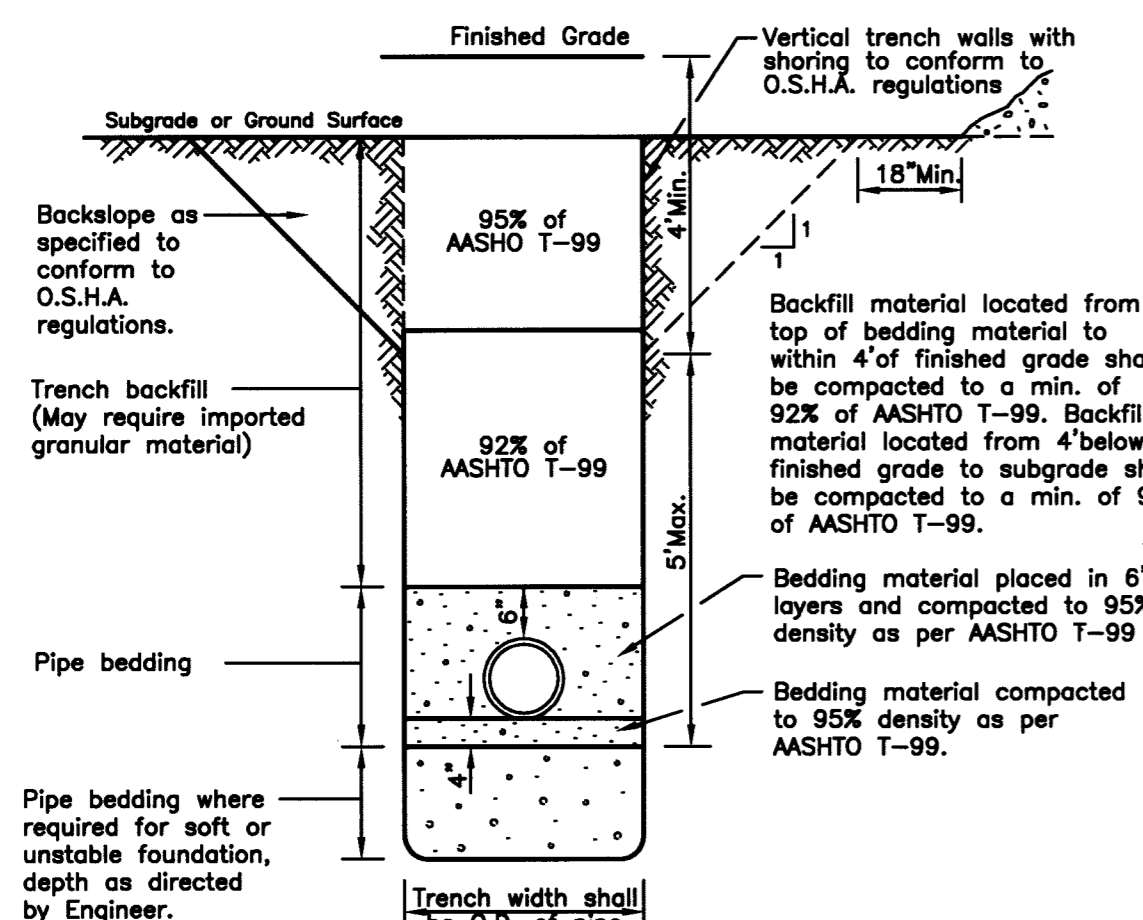


*** NOTE**
WHERE SERVICE DEPTH IS LESS THAN 4 FEET AT RIGHT OF WAY LINE INSTALL SERVICE PIPE AT CENTER OF SAN. SEWER MAIN AS SHOWN.

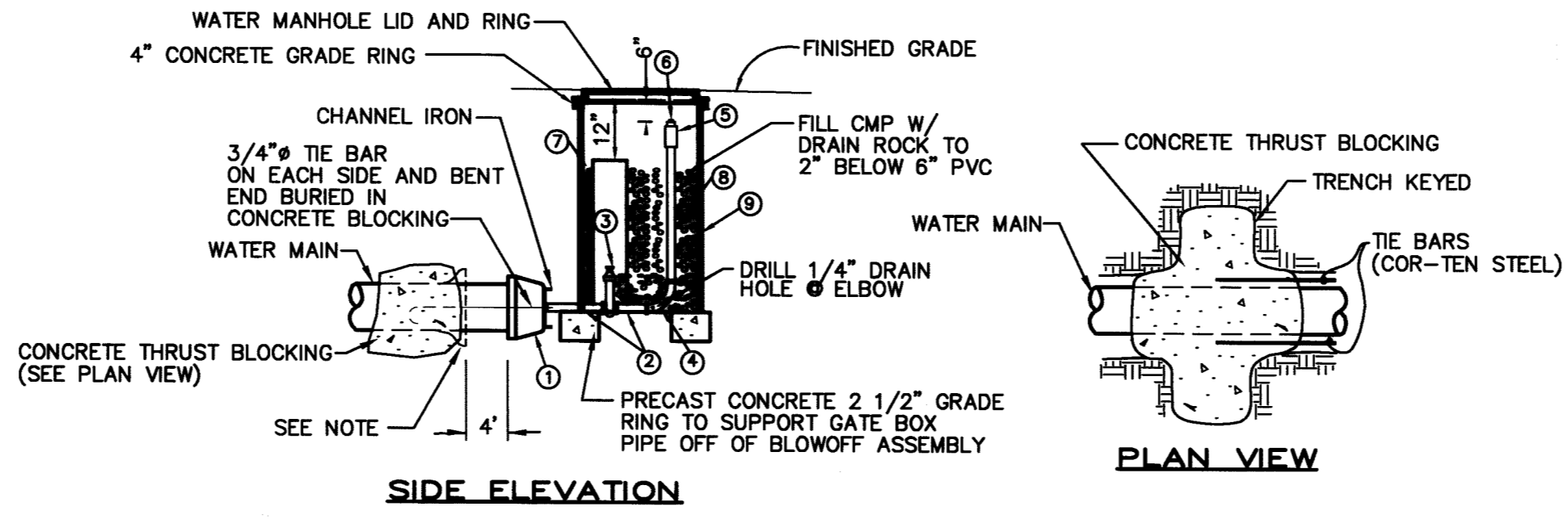
TYPICAL SEWER SERVICE AND MARKER



FIRE HYDRANT ASSEMBLY



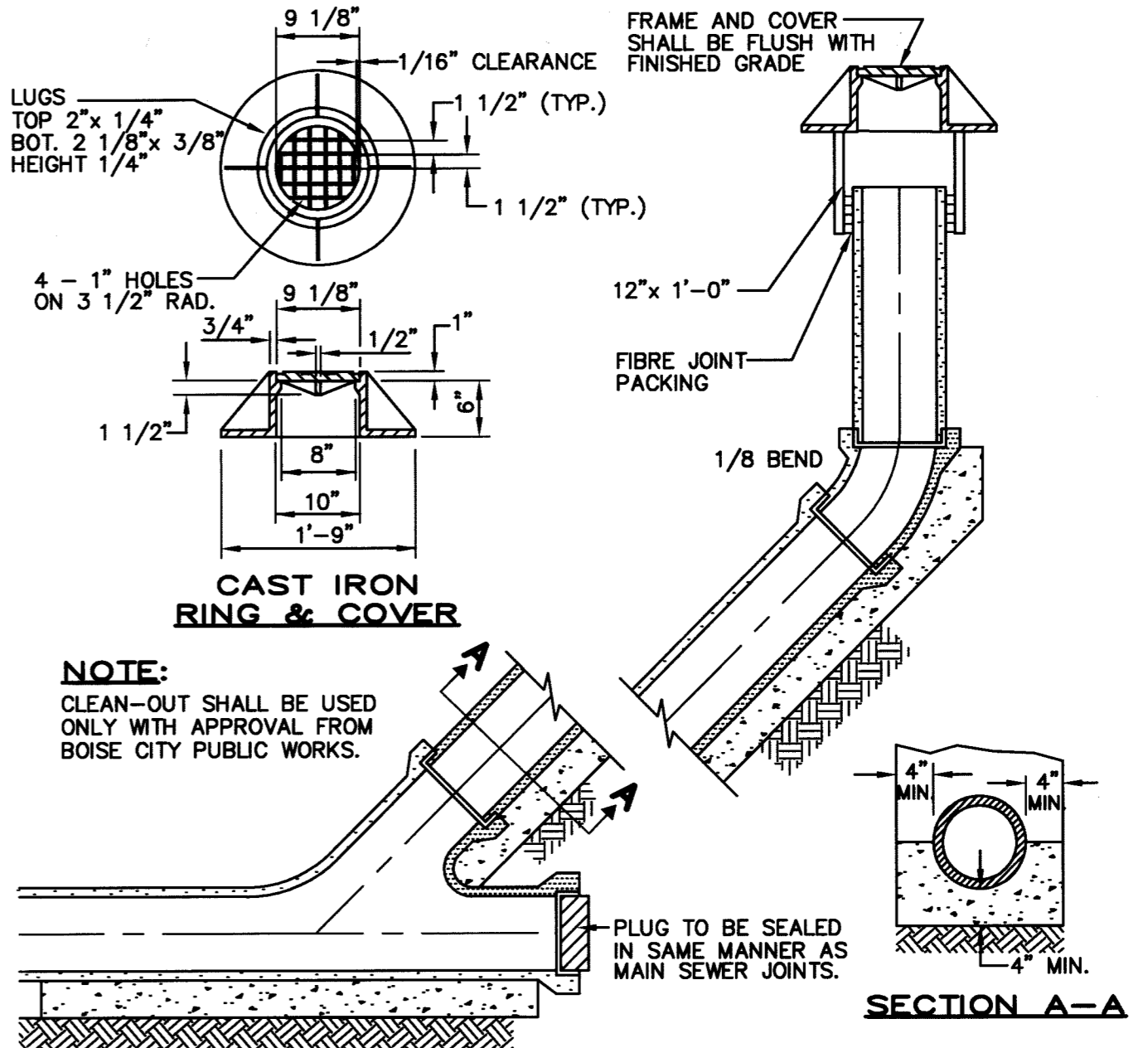
TYPICAL TRENCH DETAIL



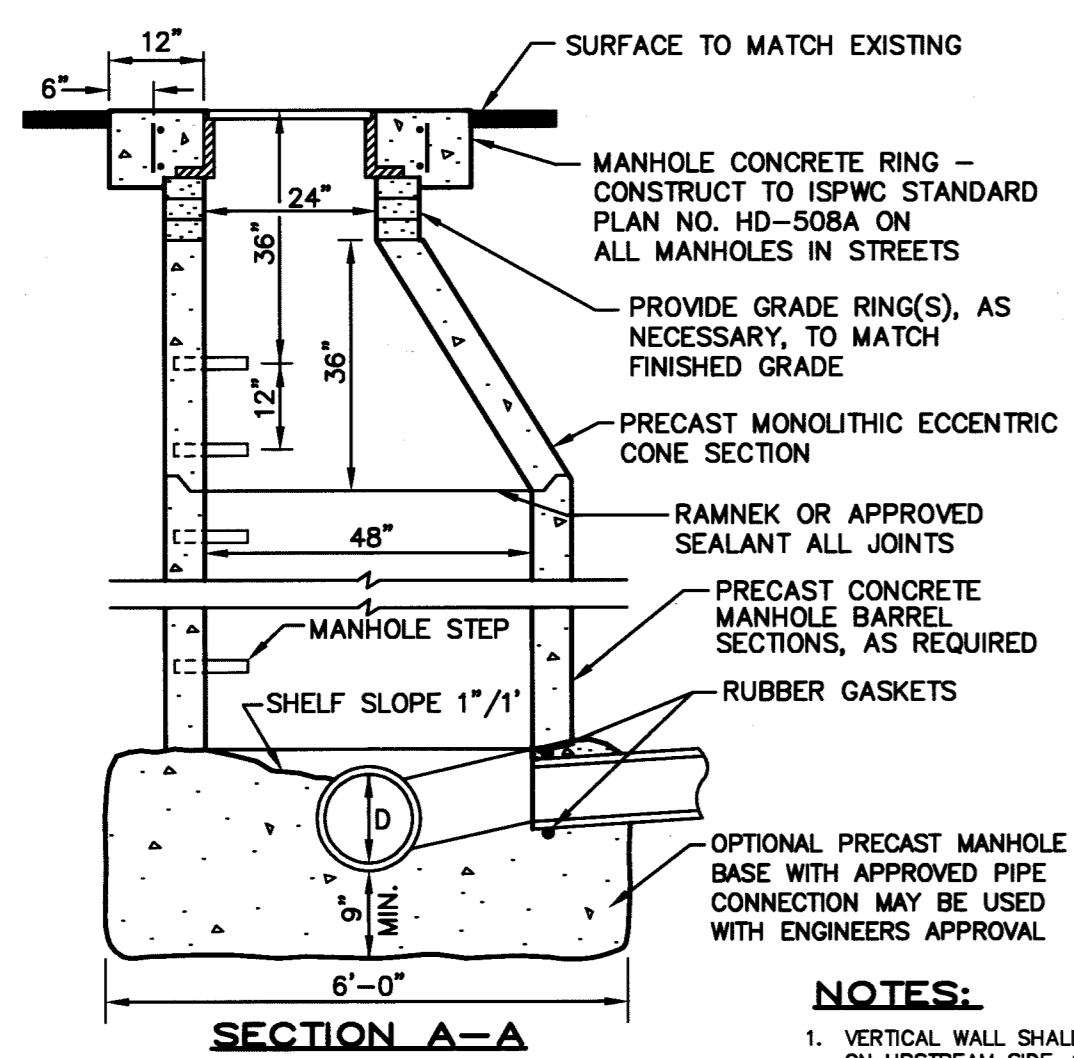
2' BLOW-OFF ASSEMBLY

- EQUIPMENT LEGEND**
- ① MAIN SIZE M.J. CAP WITH 2" IRON PIPE THREAD OUTLET
 - ② 2"x6" GALVANIZED NIPPLE (THREADED)
 - ③ 2" RESILIENT WEDGE SCREWED GATE VALVE OR APPROVED EQUAL
 - ④ 2" GALVANIZED 90° ELBOW, THREADED W/ 1/4" DRILLED DRAIN HOLE
 - ⑤ 2" SCHEDULE 40 GALVANIZED MALE ADAPTER (THREADED)
 - ⑥ 2" THREADED FIP x ALUMINUM KAM-LOC QUICK COUPLING MALE ADAPTER WITH CAP
 - ⑦ PVC PIPE - 6" DIAMETER
 - ⑧ 2" SCHEDULE 40 GALVANIZED PIPE
 - ⑨ 30" DIAMETER CMP

NOTE:
WHEN CONSTRUCTING THIS BLOWOFF FOR A TEMPORARY USE, INSTALL A 3 FOOT LENGTH OF WATER PIPE INTO THE BELL END OF THE LAST LENGTH OF MAIN.

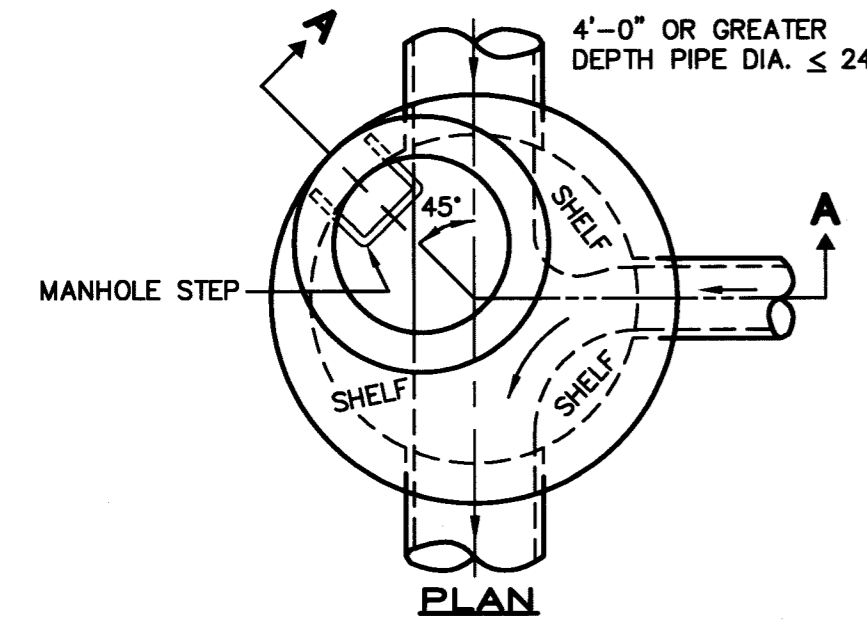


STANDARD 8' TEMPORARY CLEAN-OUT

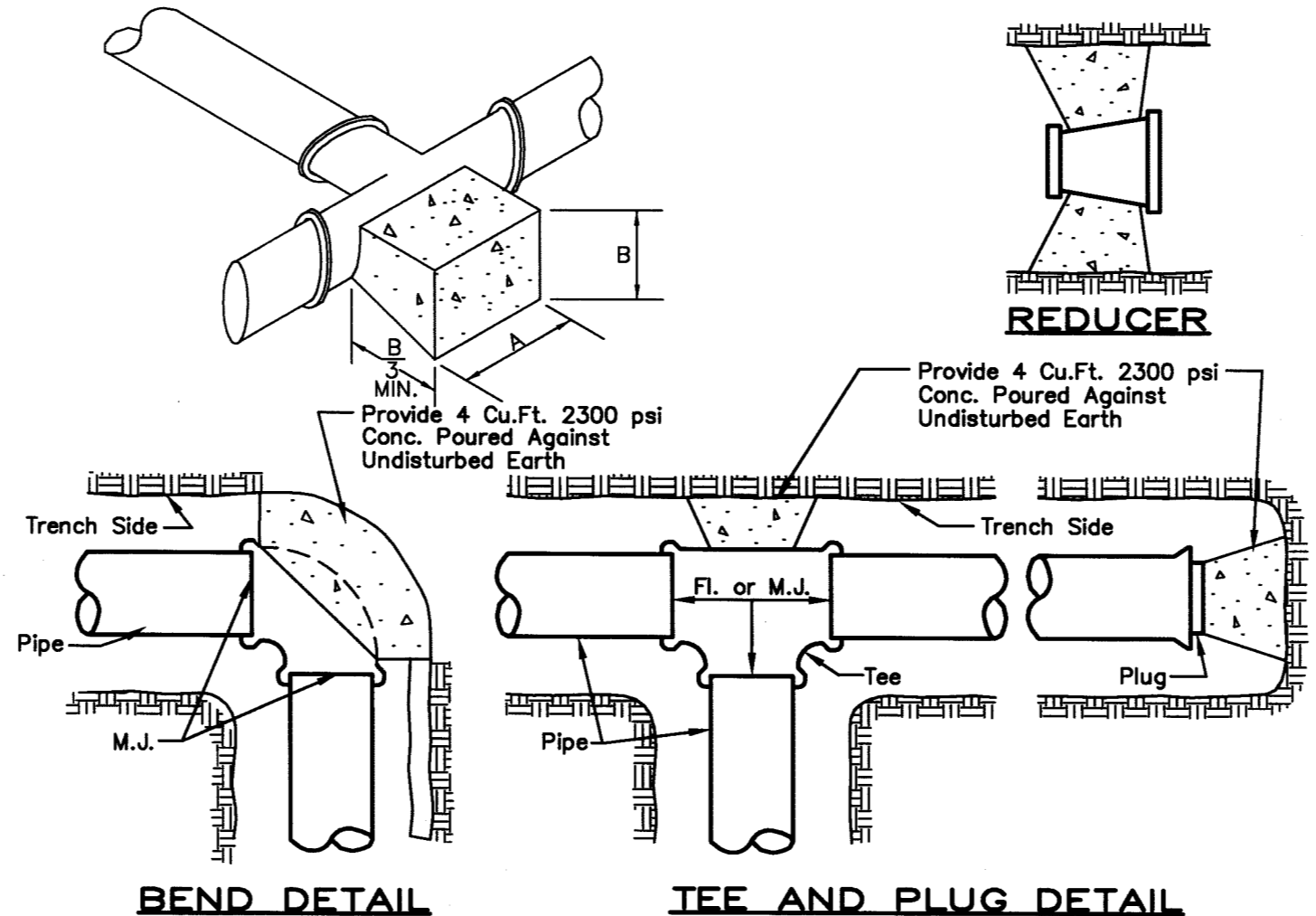


SECTION A-A

- NOTES:**
1. VERTICAL WALL SHALL BE PLACED ON UPSTREAM SIDE OF MANHOLE, ROTATED 45 DEGREES.
 2. FOR PIPE DIAMETER, D, GREATER THAN 24", SEE "STANDARD MANHOLE TYPE B" OPTIONAL.
 3. MANHOLE FRAME AND COVER: A. SEE DRAWING NO. SD 507 B. FRAME AND COVER SHALL BE FLUSH WITH PAVEMENT.
 4. GRADE RINGS SHALL NOT EXCEED 1'-FT. IN HEIGHT.
 5. WHERE PVC IS UTILIZED, A RUBBER RING OR GASKETED COLLAR IS TO BE INSTALLED WHERE THE PIPE IS IN CONTACT WITH MANHOLE BASE AND/OR MANHOLE CHANNEL, IN ORDER TO INSURE A WATERTIGHT SEAL.
 6. EITHER BASE ON STANDARD MANHOLE TYPE B AND TYPE B OPTIONAL MAY BE USED WITH EITHER MANHOLE DESIGN.
 7. TYPE B MANHOLE PER I.S.P.W.C. STD. DWG. SD-502 MAY BE USED IN PLACE OF TYPE B OPTIONAL IF REQUIRED.



STANDARD MANHOLE - TYPE A



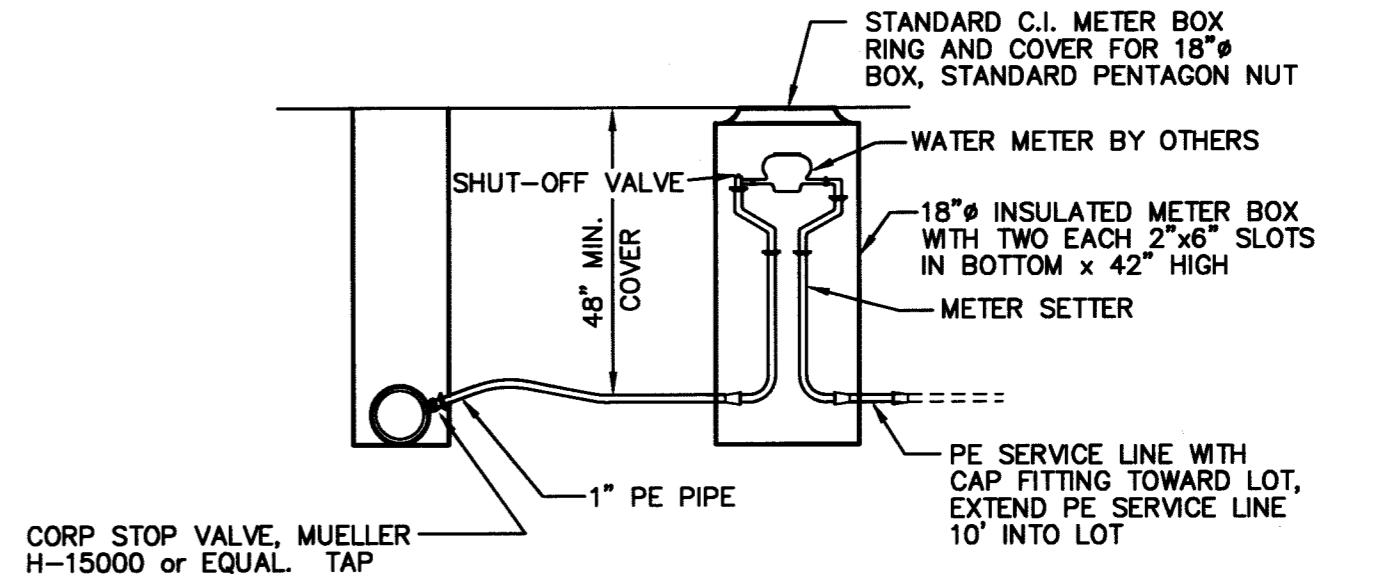
THRUST BLOCK DETAIL

TABLE: DIMENSION FOR THRUST BLOCKING

FITTING SIZES	TEES & PLUGS		90° BEND		45° BEND & WYES		REDUCERS & 22 1/2° BEND	
	A	B	A	B	A	B	A	B
4"	1'-7"	1'-2"	1'-9"	1'-6"	1'-8"	0'-10"	1'-7"	0'-6"
6"	2'-0"	1'-11"	2'-5"	2'-2"	1'-10"	1'-7"	1'-9"	0'-10"
8"	2'-8"	2'-6"	3'-2"	3'-0"	2'-5"	2'-1"	1'-9"	1'-6"
10"	3'-4"	3'-3"	4'-0"	3'-10"	3'-0"	2'-9"	2'-2"	1'-11"
12"	4'-0"	3'-10"	4'-8"	4'-8"	3'-8"	3'-3"	2'-7"	2'-3"
14"	5'-5"	3'-10"	6'-8"	4'-11"	4'-9"	3'-5"	3'-5"	2'-5"

NOTE:
THIS TABLE IS BASED ON 150 PSI MAIN PRESSURE
2000 PSF SOIL BEARING PRESSURE.
WRAP ALL FITTINGS WITH POLYETHYLENE.

THRUST BLOCK DETAIL



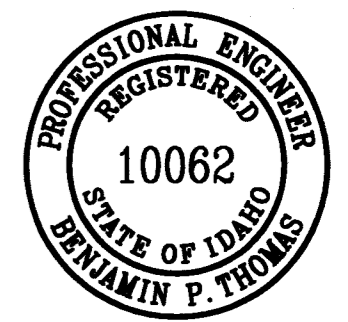
STANDARD WATER SERVICE INSTALLATION

RECORD DOCUMENTS

These Record Documents are based upon the marked-up record drawings, addenda, change orders, and other data furnished by the Contractor and/or public agencies. These Record Documents shall not be used for any purpose other than the Record Documents are being prepared for. The Record Documents are being prepared on the basis of the information provided by the Contractor and does not warrant their accuracy, except for that information verified by the Engineer.

Signature: *Benjamin P. Thomas*
Date: 9/19/03

REVISION: 03/20/03 BY: ST
04/11/03 BPT



BRIGGS ENGINEERING, INC.
REGISTERED PROFESSIONAL ENGINEER
10062
STATE OF IDAHO
BENJAMIN P. THOMAS

ENGINEERS SURVEYORS
PLANNERS
1800 W. OVERLAND ROAD • BOISE, IDAHO 83705 • (208) 344-9700
These drawings or any portion thereof shall not be used on any Project or extension of this Project except by written agreement from Briggs Engineering, Inc.

APPROVED FOR CONSTRUCTION
DATE: APRIL 11, 2003

SUTTER'S MILL
SUBDIVISION NO. 3
SANITARY SEWER AND WATER DETAILS
SCALE: N.T.S.
DWG. NO. 20504-DTL
DATE: 12/27/02 SFT

SHEET: 8 OF 8

DT-2

20504-DTL.sft