

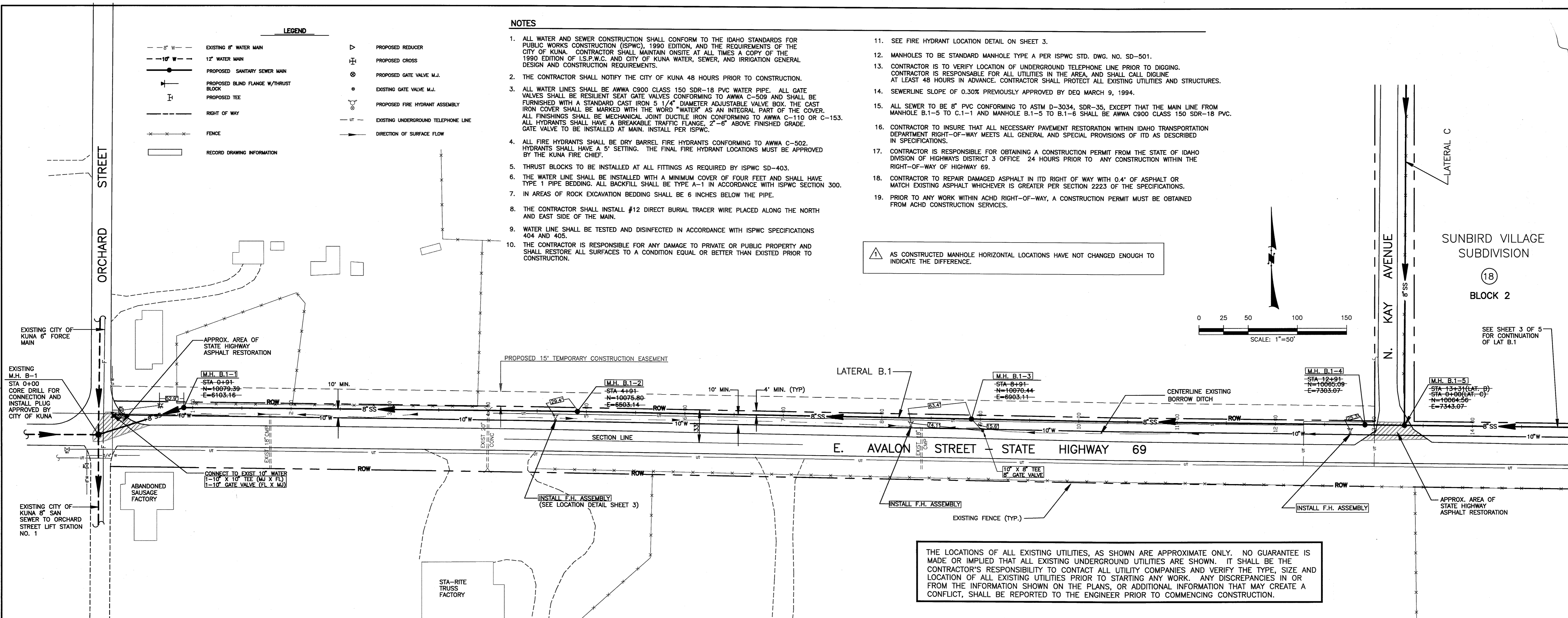
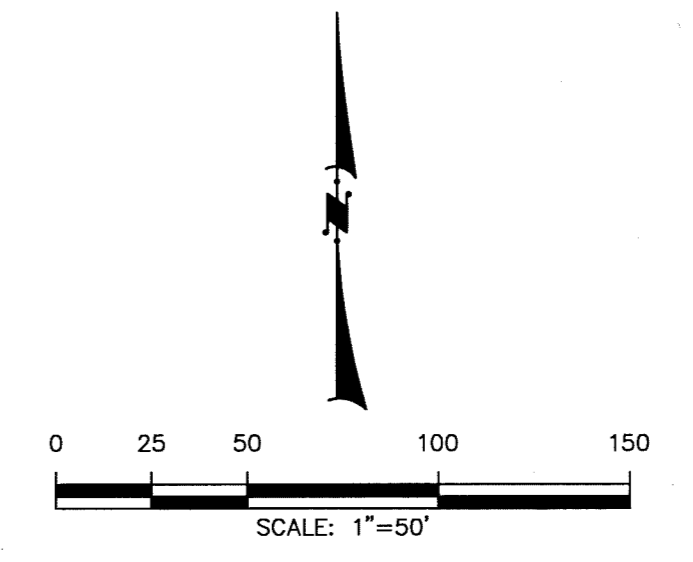
NO.	REVISIONS	DATE	BY
1	REVISIONS PER KUNA CITY ENGINEER, LETTER DATED 5/17/94.	5/17/94	DESIGNED TM
2	RELOCATED LATERAL C TO KAY AVENUE AS PER KUNA CITY ENGINEER LETTER DATED 6/27/94.	6/27/94	CHECKED TM
3	ADDED SEWER MAIN SPECIFICATION TO NOTE 15.	6/27/94	APPROVED
4	RECORD DRAWING INFORMATION	5/20/96	

TOOTHMAN-ORTON ENGINEERING COMPANY
CONSULTING ENGINEERS, SURVEYORS AND PLANNERS
1802 NORTH 33RD STREET
BOISE, IDAHO 83703
FAX (208) 342-5514

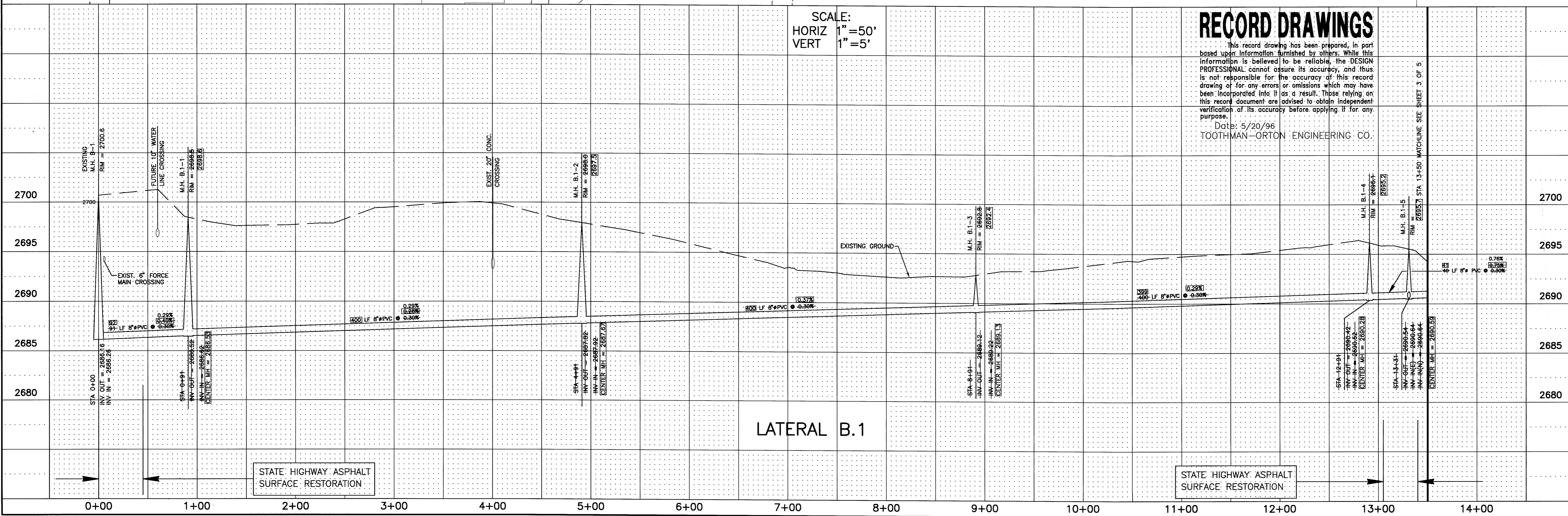
SUNBIRD VILLAGE SUBDIVISION
OFFSITE WATER LINE EXTENSION PLAN
OFFSITE SANITARY SEWAGE COLLECTION SYSTEM
PLAN AND PROFILE - LAT. B.1
DATE: APRIL, 1993
PROJECT: 93059
SHEET 2 OF 6

- NOTES**
- ALL WATER AND SEWER CONSTRUCTION SHALL CONFORM TO THE IDAHO STANDARDS FOR PUBLIC WORKS CONSTRUCTION (ISPCW), 1990 EDITION, AND THE REQUIREMENTS OF THE CITY OF KUNA. CONTRACTOR SHALL MAINTAIN ONSITE AT ALL TIMES A COPY OF THE 1990 EDITION OF ISPCW, AND CITY OF KUNA WATER, SEWER, AND IRRIGATION GENERAL DESIGN AND CONSTRUCTION REQUIREMENTS.
 - THE CONTRACTOR SHALL NOTIFY THE CITY OF KUNA 48 HOURS PRIOR TO CONSTRUCTION.
 - ALL WATER LINES SHALL BE AWWA C900 CLASS 150 SDR-18 PVC WATER PIPE. ALL GATE VALVES SHALL BE RESILIENT SEAT GATE VALVES CONFORMING TO AWWA C-509 AND SHALL BE FURNISHED WITH A STANDARD CAST IRON 5 1/4" DIAMETER ADJUSTABLE VALVE BOX. THE CAST IRON COVER SHALL BE MARKED WITH THE WORD "WATER" AS AN INTEGRAL PART OF THE COVER. ALL FINISHINGS SHALL BE MECHANICAL JOINT DUCTILE IRON CONFORMING TO AWWA C-110 OR C-153. ALL HYDRANTS SHALL HAVE A BREAKABLE TRAFFIC FLANGE, 2'-6" ABOVE FINISHED GRADE. GATE VALVE TO BE INSTALLED AT MAIN. INSTALL PER ISPCW.
 - ALL FIRE HYDRANTS SHALL BE DRY BARREL FIRE HYDRANTS CONFORMING TO AWWA C-502. HYDRANTS SHALL HAVE A 5' SETTING. THE FINAL FIRE HYDRANT LOCATIONS MUST BE APPROVED BY THE KUNA FIRE CHIEF.
 - THRUST BLOCKS TO BE INSTALLED AT ALL FITTINGS AS REQUIRED BY ISPCW SD-403.
 - THE WATER LINE SHALL BE INSTALLED WITH A MINIMUM COVER OF FOUR FEET AND SHALL HAVE TYPE 1 PIPE BEDDING. ALL BACKFILL SHALL BE TYPE A-1 IN ACCORDANCE WITH ISPCW SECTION 300.
 - IN AREAS OF ROCK EXCAVATION BEDDING SHALL BE 6 INCHES BELOW THE PIPE.
 - THE CONTRACTOR SHALL INSTALL #12 DIRECT BURIAL TRACER WIRE PLACED ALONG THE NORTH AND EAST SIDE OF THE MAIN.
 - WATER LINE SHALL BE TESTED AND DISINFECTED IN ACCORDANCE WITH ISPCW SPECIFICATIONS 404 AND 405.
 - THE CONTRACTOR IS RESPONSIBLE FOR ANY DAMAGE TO PRIVATE OR PUBLIC PROPERTY AND SHALL RESTORE ALL SURFACES TO A CONDITION EQUAL OR BETTER THAN EXISTED PRIOR TO CONSTRUCTION.
 - SEE FIRE HYDRANT LOCATION DETAIL ON SHEET 3.
 - MANHOLES TO BE STANDARD MANHOLE TYPE A PER ISPCW STD. DWG. NO. SD-501.
 - CONTRACTOR IS TO VERIFY LOCATION OF UNDERGROUND TELEPHONE LINE PRIOR TO DIGGING. CONTRACTOR IS RESPONSIBLE FOR ALL UTILITIES IN THE AREA, AND SHALL CALL DIALONE AT LEAST 48 HOURS IN ADVANCE. CONTRACTOR SHALL PROTECT ALL EXISTING UTILITIES AND STRUCTURES.
 - SEWERLINE SLOPE OF 0.30% PREVIOUSLY APPROVED BY DEQ MARCH 9, 1994.
 - ALL SEWER TO BE 8" PVC CONFORMING TO ASTM D-3034, SDR-35, EXCEPT THAT THE MAIN LINE FROM MANHOLE B.1-5 TO C.1-1 AND MANHOLE B.1-5 TO B.1-6 SHALL BE AWWA C900 CLASS 150 SDR-18 PVC.
 - CONTRACTOR TO INSURE THAT ALL NECESSARY PAVEMENT RESTORATION WITHIN IDAHO TRANSPORTATION DEPARTMENT RIGHT-OF-WAY MEETS ALL GENERAL AND SPECIAL PROVISIONS OF ITD AS DESCRIBED IN SPECIFICATIONS.
 - CONTRACTOR IS RESPONSIBLE FOR OBTAINING A CONSTRUCTION PERMIT FROM THE STATE OF IDAHO DIVISION OF HIGHWAYS DISTRICT 3 OFFICE 24 HOURS PRIOR TO ANY CONSTRUCTION WITHIN THE RIGHT-OF-WAY OF HIGHWAY 69.
 - CONTRACTOR TO REPAIR DAMAGED ASPHALT IN ITS RIGHT OF WAY WITH 0.4" OF ASPHALT OR MATCH EXISTING ASPHALT WHICHEVER IS GREATER PER SECTION 2223 OF THE SPECIFICATIONS.
 - PRIOR TO ANY WORK WITHIN ACHD RIGHT-OF-WAY, A CONSTRUCTION PERMIT MUST BE OBTAINED FROM ACHD CONSTRUCTION SERVICES.

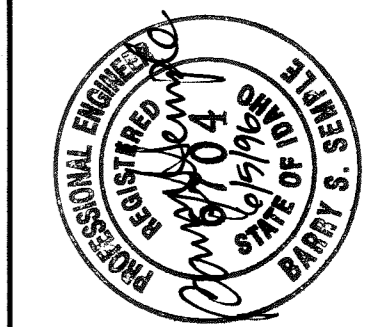
AS CONSTRUCTED MANHOLE HORIZONTAL LOCATIONS HAVE NOT CHANGED ENOUGH TO INDICATE THE DIFFERENCE.



THE LOCATIONS OF ALL EXISTING UTILITIES, AS SHOWN ARE APPROXIMATE ONLY. NO GUARANTEE IS MADE OR IMPLIED THAT ALL EXISTING UNDERGROUND UTILITIES ARE SHOWN. IT SHALL BE THE CONTRACTOR'S RESPONSIBILITY TO CONTACT ALL UTILITY COMPANIES AND VERIFY THE TYPE, SIZE AND LOCATION OF ALL EXISTING UTILITIES PRIOR TO STARTING ANY WORK. ANY DISCREPANCIES IN OR FROM THE INFORMATION SHOWN ON THE PLANS, OR ADDITIONAL INFORMATION THAT MAY CREATE A CONFLICT, SHALL BE REPORTED TO THE ENGINEER PRIOR TO COMMENCING CONSTRUCTION.



RECORD DRAWINGS
This record drawing has been prepared, in part based upon information furnished by others. While this information is believed to be reliable, the DESIGN PROFESSIONAL cannot assure its accuracy, and thus is not responsible for the accuracy of this record drawing or for any errors or omissions which may have been incorporated into it as a result. Those relying on this record document are advised to obtain independent verification of its accuracy before applying it for any purpose.
Date: 5/20/96
TOOTHMAN-ORTON ENGINEERING CO.

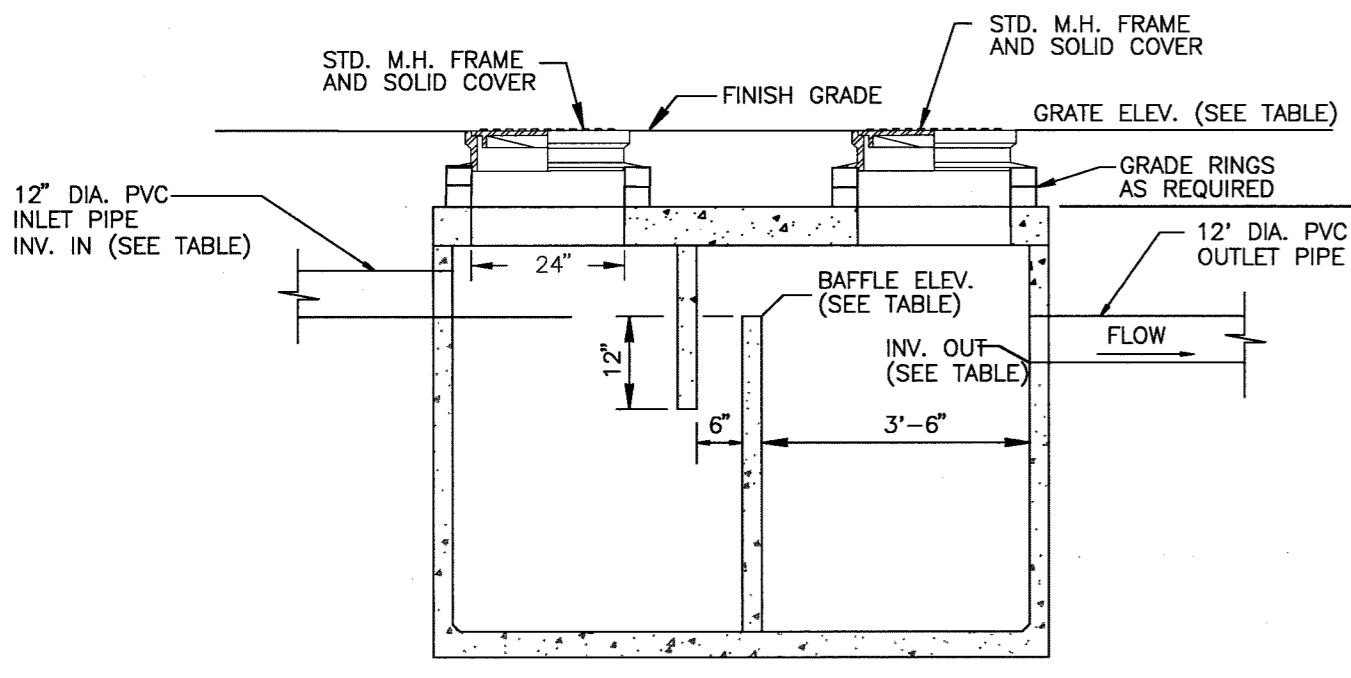


NO.	REVISIONS	DATE	BY	DESCRIPTION
1	RELOCATED LATERAL C TO KAY AVENUE PER KUNA CITY ENGINEER. LETTER DATED JUNE 3, 1994.	6/9/94	ASBLT-5	DESIGNED
2	REVISED SEWER MAIN SPECIFICATION TO C-900 PVC.	6/27/94	ASBLT-5	DRAWN
3	REVISED PER ACHD LETTER, DATED 7/19/94.	7/13/94	ASBLT-5	CHECKED
4	ADDITION OF 5' ASPHALT TRANSITION AT END OF SIDEWALK PER ACHD LETTER, DATED 8/12/94.	8/14/94	ASBLT-5	APPROVED
5	RECORD DRAWING INFORMATION	5/20/96	ASBLT-5	APPROVED

TOOTHMAN-ORTON ENGINEERING COMPANY
 CONSULTING ENGINEERS, SURVEYORS AND PLANNERS
 1802 NORTH 33RD STREET
 BOISE, IDAHO 83703
 (208) 342-5511
 FAX (208) 342-5514

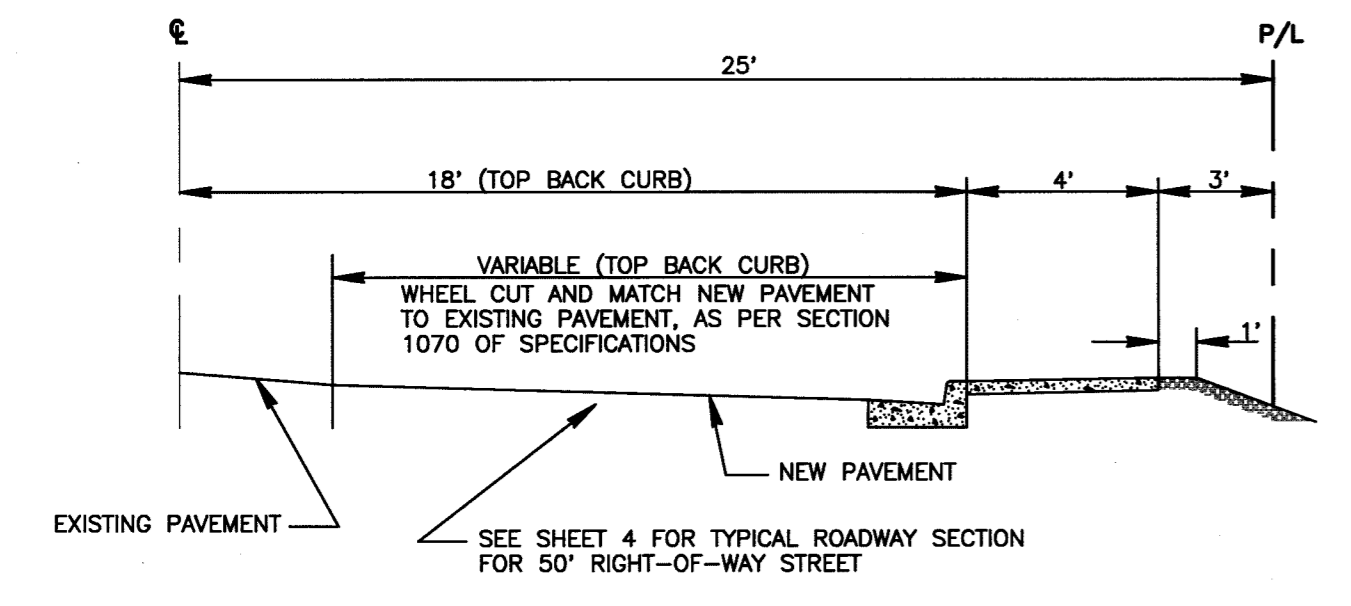
SUNBIRD VILLAGE SUBDIVISION
 STREET PLAN & PROFILE
 KAY AVENUE

DATE: MAY 25, 1994
 PROJECT: 93059
SHEET 5 OF 6

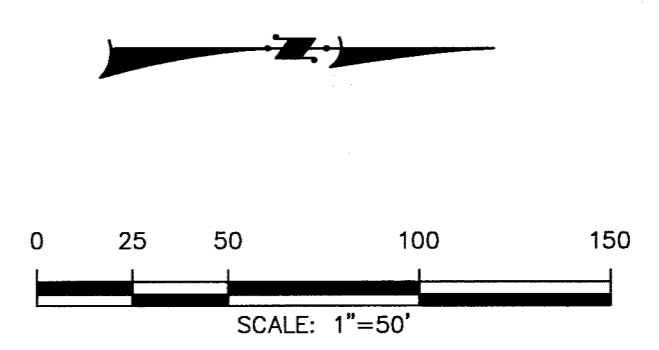
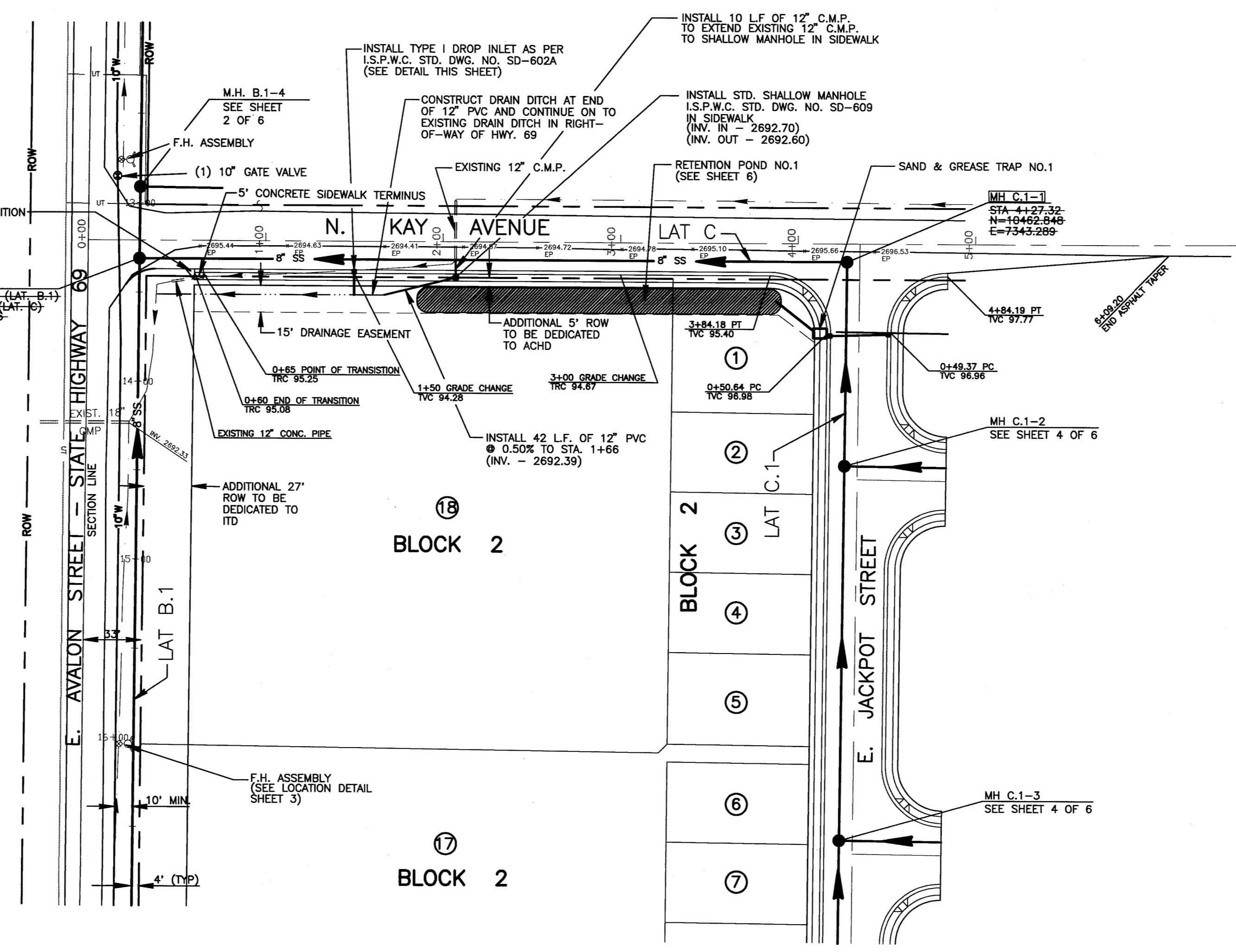


TYPICAL SAND AND GREASE TRAP
N.T.S.

NO.	GRATE ELEV.	TOP OF BOX ELEV.	BAFFLE ELEV.	INV. IN ELEV.	INV. OUT ELEV.
1.	2695.04	2694.62	2692.80	2693.12	2692.49
2.	2697.20	2696.31	2694.28	2694.55	2694.01
3.	2699.30	2697.91	2696.05	2696.31	2695.79

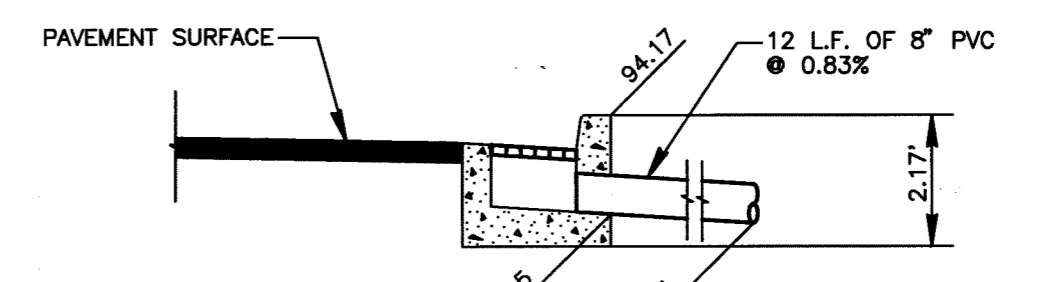


KAY AVENUE PAVEMENT MATCH SECTION
N.T.S.



LEGEND

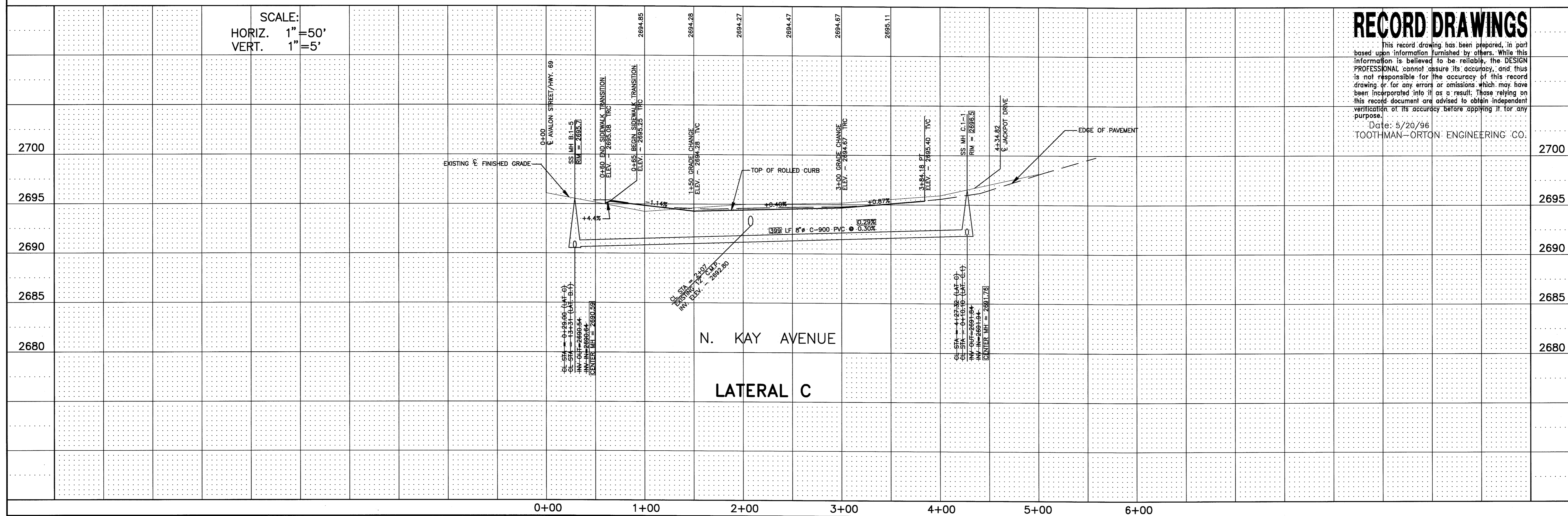
- PROPERTY BOUNDARY LINE
- RIGHT-OF-WAY LINE
- ROADWAY CENTERLINE
- LOT LINE
- DIRECTION OF FLOW
- SD --- STORM DRAIN
- CATCH BASIN
- 8" SEWER LINE WITH MANHOLE
- 10" W --- 10" WATER LINE
- SMALL DRAIN DITCH
- TVC --- TOP VERTICAL CURB
- TRC --- TOP ROLLED CURB
- PEDESTRIAN ACCESS RAMP
- ③ --- LOT NUMBER
- ELEV. & STA. TOP VERTICAL CURB
- CURB & GUTTER AND SIDEWALK
- RECORD DRAWING INFORMATION



INLET CATCH BASIN - TYPE I (STA. 1+50)
N.T.S.

AS CONSTRUCTED MANHOLE HORIZONTAL LOCATIONS HAVE NOT CHANGED ENOUGH TO INDICATE THE DIFFERENCE.

SCALE:
 HORIZ. 1" = 50'
 VERT. 1" = 5'



RECORD DRAWINGS

This record drawing has been prepared, in part based upon information furnished by others. While this information is believed to be reliable, the DESIGN PROFESSIONAL cannot assure its accuracy, and thus is not responsible for the accuracy of this record drawing or for any errors or omissions which may have been incorporated into it as a result. Those relying on this record document are advised to obtain independent verification of its accuracy before applying it for any purpose.
 Date: 5/20/96
 TOOTHMAN-ORTON ENGINEERING CO.