

KEY NOTES

- ① CONNECT TO EXISTING 8" WATER LINE REMOVE EXISTING BLOW-OFF VALVE ASSEMBLY
- ② INSTALL 15.5 LF, 8" C-900 WATER LINE
- ③ INSTALL 8"-11 1/4" BEND (MJ)
- ④ INSTALL 28.5 LF, 8" C-900 WATER LINE
- ⑤ INSTALL 33.2 LF, 8" WATER LINE
- ⑥ INSTALL FIRE HYDRANT 1-8"x8"x6" TEE (MxMxFLG) 1-6" GATE VALVE (FLGxMJ) 14.8 LF, 6" C-900 WATER LINE 1-FIRE HYDRANT ASSEMBLY
- ⑦ INSTALL 53.9 LF, 8" C-900 WATER LINE
- ⑧ INSTALL 8"-22 1/2" BEND (MJ)
- ⑨ INSTALL 18.7 LF, 8" C-900 WATER LINE
- ⑩ INSTALL 8" TEE (FLG) 2-8" GATE VALVES (FLGxMJ) 1-8" FLANGED ADAPTER
- ⑪ INSTALL 342.8 LF, 8" C-900 WATER LINE
- ⑫ INSTALL 8"-90° BEND (MJ)
- ⑬ INSTALL 8.5 LF, 8" C-900 WATER LINE
- ⑭ INSTALL FIRE HYDRANT 1-8"x8"x6" TEE (MxMxFLG) 1-6" GATE VALVE (FLGxMJ) 18.0 LF, 6" C-900 WATER LINE 1-FIRE HYDRANT ASSEMBLY
- ⑮ INSTALL 129.1 LF, 8" C-900 WATER LINE
- ⑯ INSTALL 43.3 LF, 8" C-900 WATER LINE
- ⑰ INSTALL 23.8 LF, 8" C-900 WATER LINE
- ⑱ INSTALL 8" TEE (FLG) 2-8" GATE VALVES (FLGxMJ) 1-8" FLANGED ADAPTER
- ⑲ INSTALL 120.6 LF, 8" C-900 WATER LINE
- ⑳ INSTALL 8"-45° BEND (MJ)
- ㉑ INSTALL 51.3 LF, 8" C-900 WATER LINE

NOTES TO CONTRACTOR:

- 1) CONTRACTOR TO FIELD VERIFY ALL EXISTING CURB & GUTTER, STORM DRAIN, CHANNEL CROSSINGS, & SEWER ELEVATIONS OR INVERTS PRIOR TO CONSTRUCTION AND NOTIFY ENGINEER WHEN ELEVATIONS OR INVERTS DO NOT MATCH PLANS.
- 2) THE LOCATIONS OF EXISTING UNDERGROUND UTILITIES ARE SHOWN IN APPROXIMATE LOCATIONS. THE CONTRACTOR SHALL DETERMINE THE EXACT LOCATION OF ALL EXISTING UTILITIES BEFORE COMMENCING WORK. HE AGREES TO BE FULLY RESPONSIBLE FOR ANY AND ALL DAMAGES WHICH MIGHT BE OCCASIONED BY HIS FAILURE TO EXACTLY LOCATE AND PRESERVE ANY AND ALL UNDERGROUND UTILITIES.

KEY NOTES continued

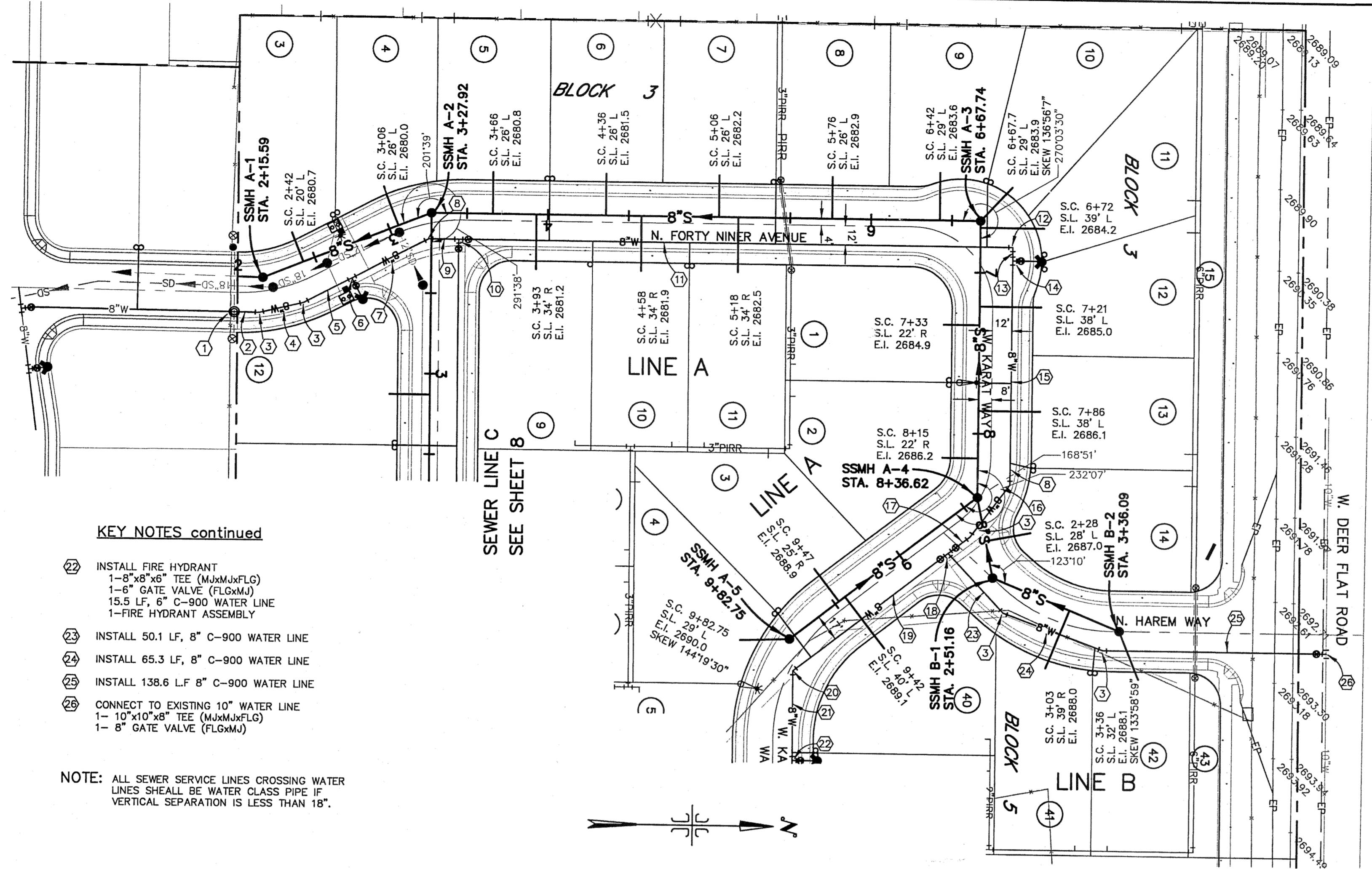
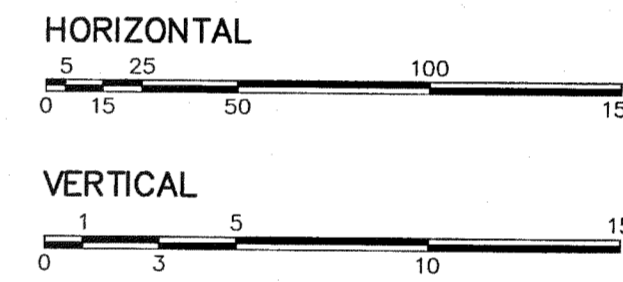
- ㉒ INSTALL FIRE HYDRANT 1-8"x8"x6" TEE (MxMxFLG) 1-6" GATE VALVE (FLGxMJ) 15.5 LF, 6" C-900 WATER LINE 1-FIRE HYDRANT ASSEMBLY
- ㉓ INSTALL 50.1 LF, 8" C-900 WATER LINE
- ㉔ INSTALL 65.3 LF, 8" C-900 WATER LINE
- ㉕ INSTALL 138.6 LF, 8" C-900 WATER LINE
- ㉖ CONNECT TO EXISTING 10" WATER LINE 1-10"x10"x8" TEE (MxMxFLG) 1-8" GATE VALVE (FLGxMJ)

NOTE: ALL SEWER SERVICE LINES CROSSING WATER LINES SHALL BE WATER CLASS PIPE IF VERTICAL SEPARATION IS LESS THAN 18".

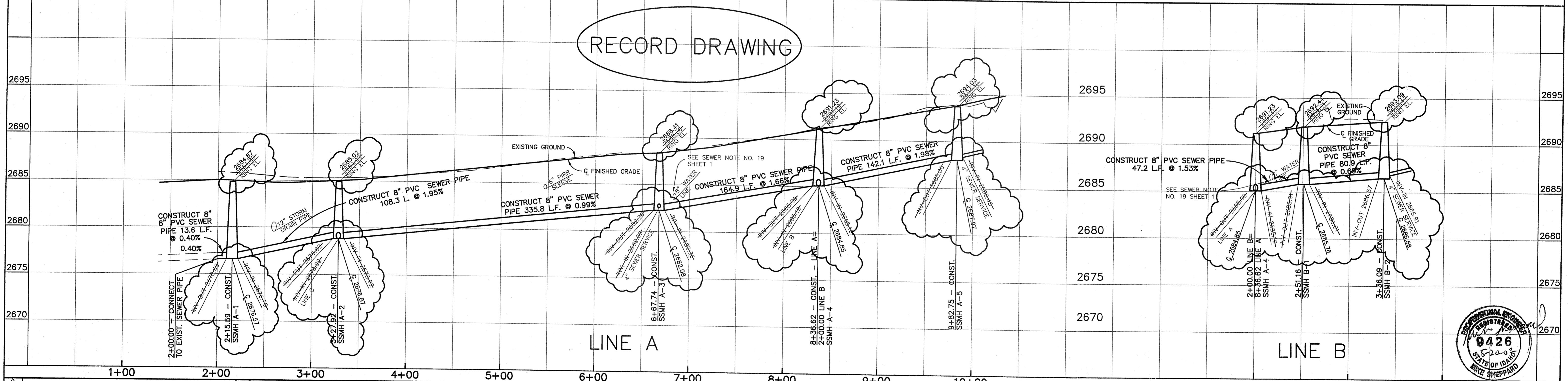
LEGEND

- PROPERTY LINE
- RIGHT-OF-WAY LINE
- CENTERLINE
- CONST. SANITARY SEWER LINE
- CONST. SEWER MANHOLE
- EXIST. SANITARY SEWER LINE
- EXIST. 5.0' SANITARY SEWER MANHOLE
- 8"W CONST. WATER LINE
- 8"W CONST. 1" WATER SERVICE AND WATER METERS
- 8"W CONST. 3/4" WATER SERVICE AND WATER METER
- 8"W EXIST. WATER LINE
- S.C. SANITARY SEWER SERVICE CONNECTION - STATION
- S.L. SANITARY SEWER SERVICE LINE - LT. OR RT.
- E.I. END INVERT OF SANITARY SEWER SERVICE
- CONST. WATER VALVE
- EXIST. WATER VALVE
- INSTALL 6" FIRE HYDRANT
- BENCH MARK LOCATION
- EXISTING HOSE BIB
- EXISTING PINE TREE
- 12" GIRR GRAVITY IRRIGATION PIPE LINE

SCALE:



RECORD DRAWING



DESIGNED BY:	stc	DATE:	1/5/01
DRAWN BY:	stc, AV	DATE:	1/5/01
CHECKED BY:		DATE:	
APPROVED:		DATE:	
REVISE INV. ELEV. LINE B AND ADD NOTE.	JA 6-18-01	COGO FILE:	
NO.	BY	DATE	REV. COGO FILE:

HUBBLE ENGINEERING, INC.
ENGINEERING-SURVEYING-PLANNING

701 S. ALLEN ST.
SUITE 102
MERIDIAN, IDAHO 83642
(208) 322-8992

GOLDCREEK SUB. NO. 2

LINE A & LINE B
SEWER PLAN & PROFILE

JOB NO.
00-195-01

SHEET NO.
7

