

GENERAL

- 1. THE LOCATIONS OF UNDERGROUND UTILITIES ARE SHOWN IN AN APPROXIMATE WAY ONLY...
2. ALL WATER, SEWER AND SERVICES LINES SHALL BE INSTALLED, COMPLETE, PRIOR TO CURB, GUTTER AND SIDEWALK CONSTRUCTION.
3. CONTRACTOR SHALL OBTAIN CONSTRUCTION PERMIT FROM ADA COUNTY HIGHWAY DISTRICT (ACHD) 24 HOURS BEFORE COMMENCING CONSTRUCTION...

STREETS

- 1. ALL WORK SHALL BE CONSTRUCTED TO THE ACHD SPECIFICATIONS.
2. STANDARD SEWER AND STORM DRAIN MANHOLES, CONES AND STRUCTURES SHALL BE SET TO SPECIFIED ELEVATION BY THEIR RESPECTIVE CONTRACTORS.
3. ALL WORK WILL BE INSPECTED BY THE ACHD IN THE PUBLIC RIGHT-OF-WAY AND BY THE DEVELOPER'S ENGINEER IN PRIVATE DRIVE IN ACCORDANCE WITH THE LATEST EDITION OF THE 'CONSTRUCTION QUALITY ASSURANCE MANUAL'.

WATER DISTRIBUTION

- 1. ALL WATER LINES SHALL BE CONSTRUCTED IN ACCORDANCE WITH THE 'IDAHO RULES FOR PUBLIC DRINKING WATER SYSTEMS, MARCH 1988 (DAPA 16-01-08)'.
2. CONTRACTOR SHALL NOTIFY KUNA CITY AND THE DEVELOPER'S ENGINEER 72 HOURS BEFORE CONSTRUCTION BEGINS.
3. TRENCH BACKFILL ABOVE THE PIPE ZONE WILL BE INSPECTED BY THE ADA COUNTY HIGHWAY DISTRICT AND SHALL MEET THEIR MATERIAL AND COMPACTION REQUIREMENTS.
4. ALL WATER MAINS SHALL BE POLY-VINYL-CHLORIDE (PVC) CONFORMING TO THE PROVISIONS OF AWWA C-900...

PRESSURE IRRIGATION FACILITIES (CONT.)

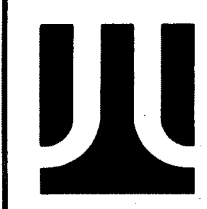
- 9. ALL INSTALLED IRRIGATION DRY LINES SHALL BE TESTED FOR LEAKAGE IN ACCORDANCE WITH SECTION 404 OF THE ISFWC SPECIFICATIONS FOLLOWING INSTALLATION OF ALL UTILITIES AND PRIOR TO PAVING.
10. ALL PIPE, MAINS AND SERVICES, SHALL BE BEDDED WITH TYPE I BEDDING. IN AREAS OF ROCK EXCAVATION BEDDING SHALL BE 6-INCHES BELOW THE PIPE.
11. IN AREAS WHERE ROCK EXCAVATION IS REQUIRED, ALL BLASTING FOR OTHER UTILITIES SHALL OCCUR PRIOR TO INSTALLATION OF ANY IRRIGATION FACILITIES.

SANITARY SEWER

- 1. PRIOR TO CONSTRUCTION IT SHALL BE THE RESPONSIBILITY OF THE CONTRACTOR TO INFORM ALL THE UTILITY COMPANIES OF THE CONSTRUCTION SCHEDULE.
2. ALL UTILITY LOCATIONS AND DEPTHS ARE APPROXIMATE.
3. ALL ELEVATIONS ARE BASED ON U.S.G.S. DATUM.
4. MANHOLE RM ELEVATIONS AS SHOWN ON THE CONSTRUCTION DRAWINGS ARE APPROXIMATE.
5. CONTRACTOR SHALL REPAVE ANY EXISTING PAVED STREETS DISTURBED DURING CONSTRUCTION.

FARM SUBDIVISION NO. 2

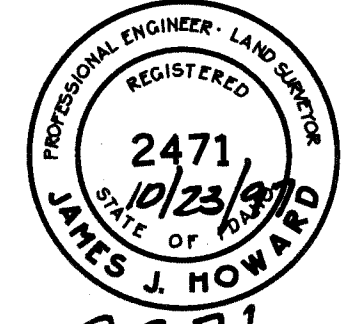
TITLE SHEET



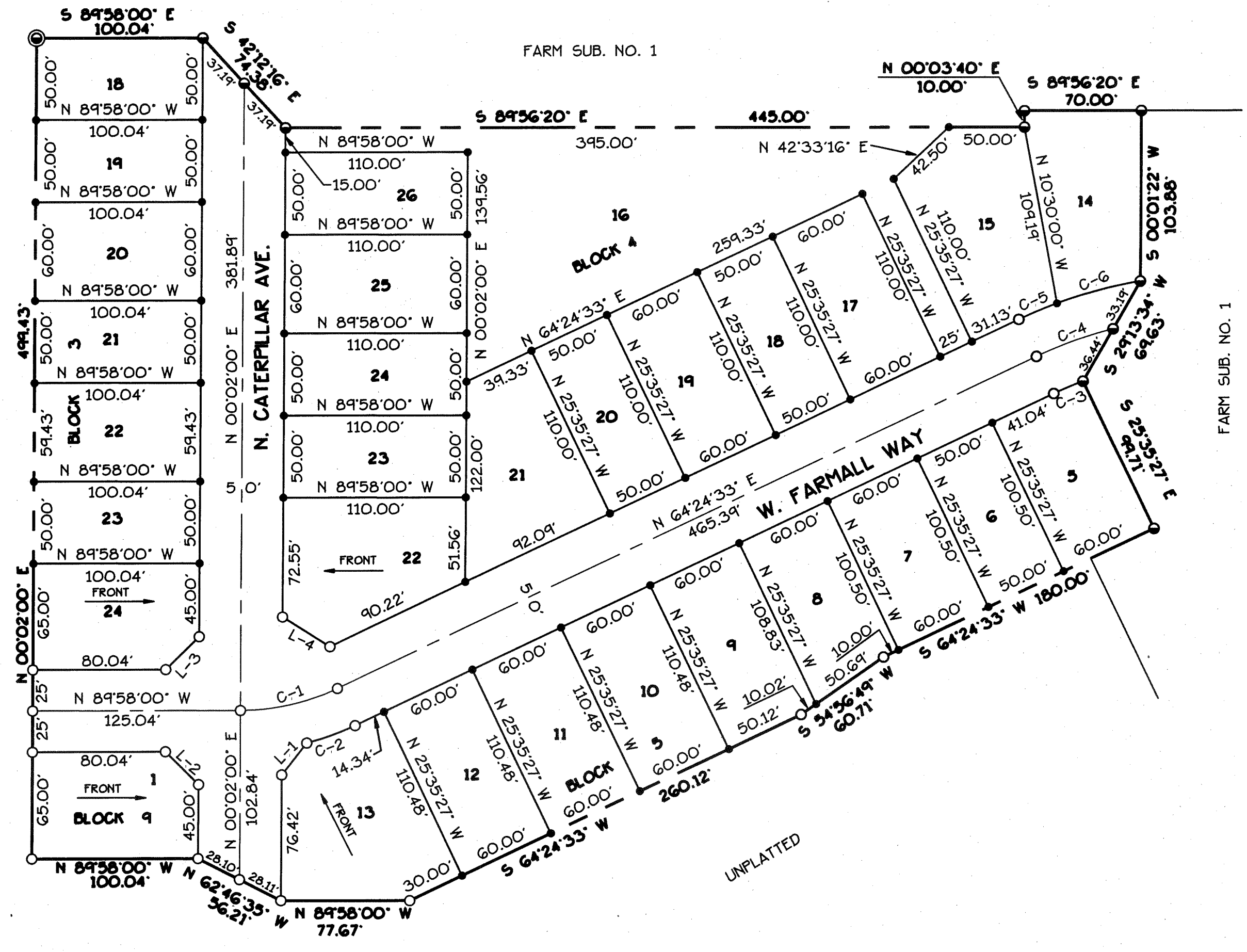
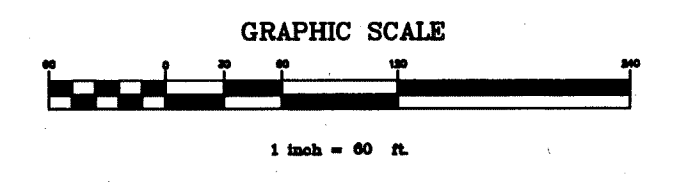
J.J. HOWARD ENGINEERING / SURVEYING

1675 HILL RD., SUITE A / BOISE, IDAHO 83702 1-208-344-0574

Table with columns: DATE, DESIGN BY, SHEET OF, SCALE, DRAWN BY, DRAWING NO., REVISION NO, DATE



Handwritten signature of J.J. Howard



CURVE TABLE

Table with columns: CURVE, RADIUS, LENGTH, TANGENT, CHORD, BEARING, DELTA

LINE TABLE

Table with columns: LINE, DIRECTION, DISTANCE

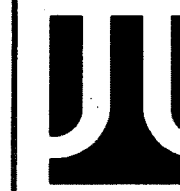
LEGEND

- PROPERTY BOUNDARY
FND. 5/8" IRON PIN
CENTERLINE
LOT LINE
DIRECTION OF FRONT OF HOUSE
SET 5/8" X 30" IRON PIN WITH PLASTIC CAP

PRESSURE IRRIGATION FACILITIES

- 1. PRESSURE IRRIGATION MAIN LINE PIPING SHALL BE CONSTRUCTED OF POLY-VINYL-CHLORIDE (PVC), 200 PSI SDR 21 CONFORMING TO ASTM D-2241 FOR PIPES 3" AND LARGER AND SCHEDULE 40 CONFORMING TO ASTM D-2466 FOR PIPES 2" AND SMALLER FOR PRESSURE IRRIGATION.
2. ALL PIPE SHALL BE CLEARLY MARKED WITH TYPE, CLASS AND/OR THICKNESS AS APPLICABLE.
3. ALL FITTINGS SHALL BE CAST IRON, DUCTILE IRON, PVC, BRASS OR STAINLESS STEEL, AND SHALL HAVE A MINIMUM PSI PRESSURE RATING EQUAL TO OR GREATER THAN THE MAIN LINE PRESSURE RATING.

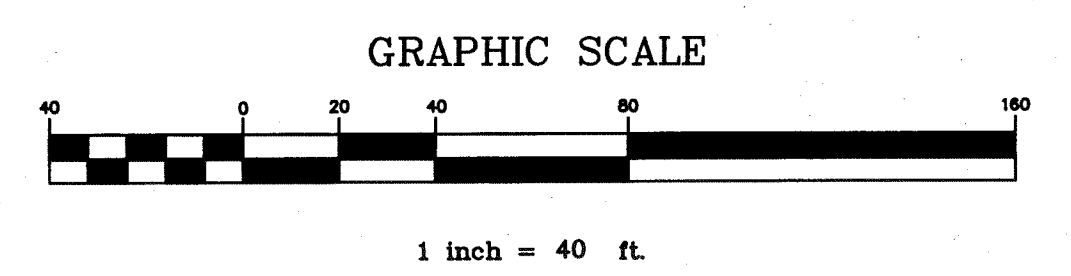
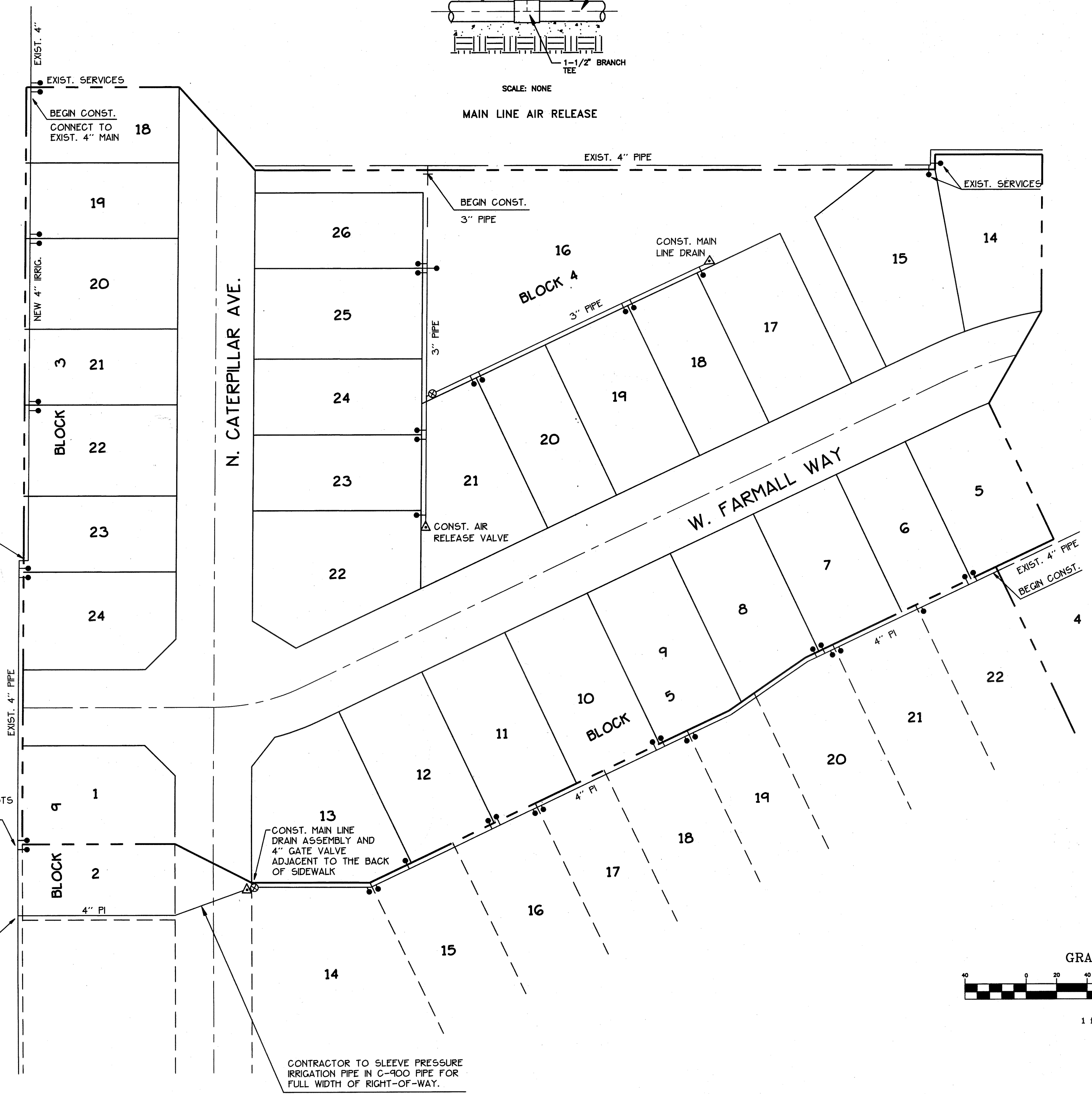
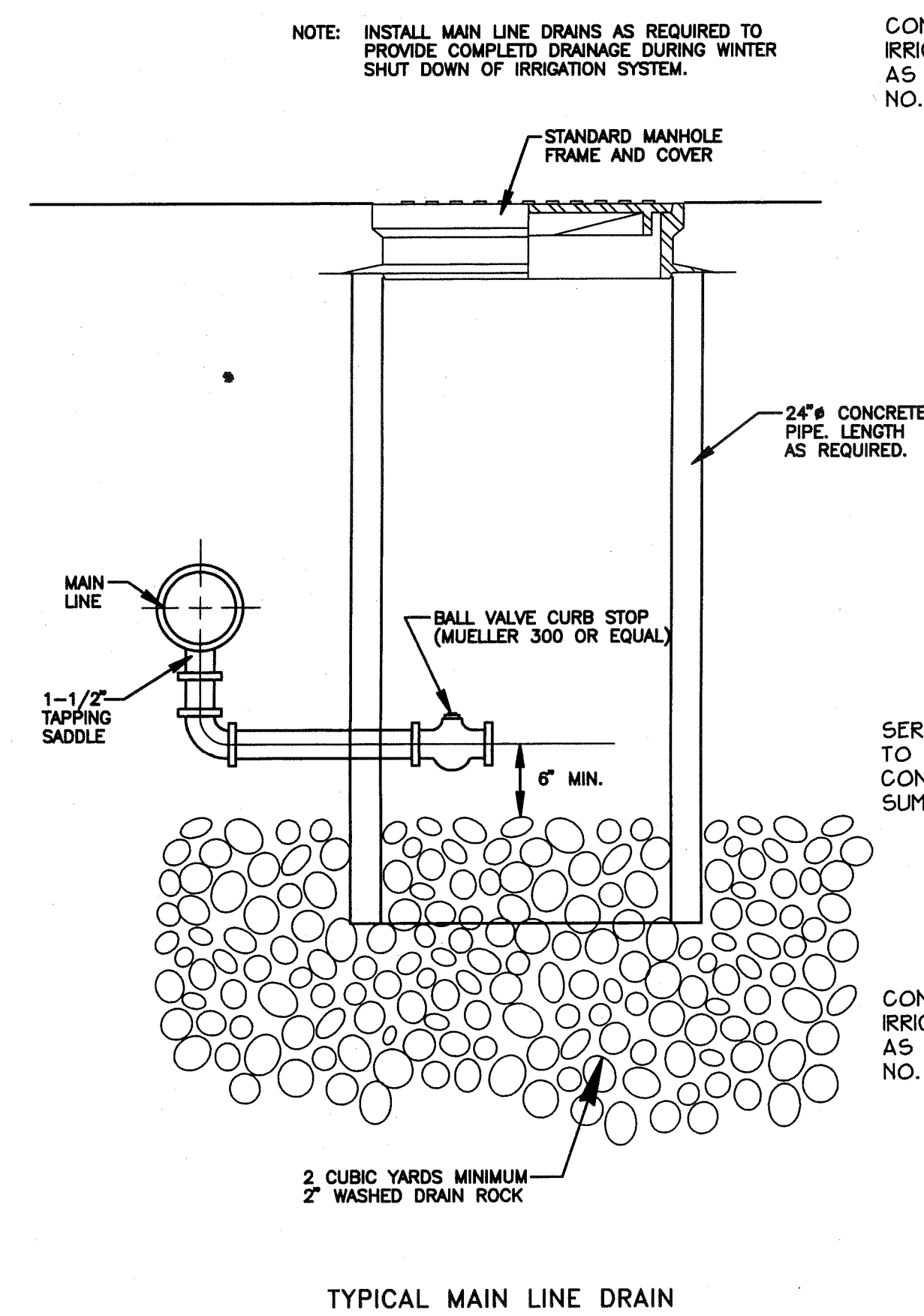
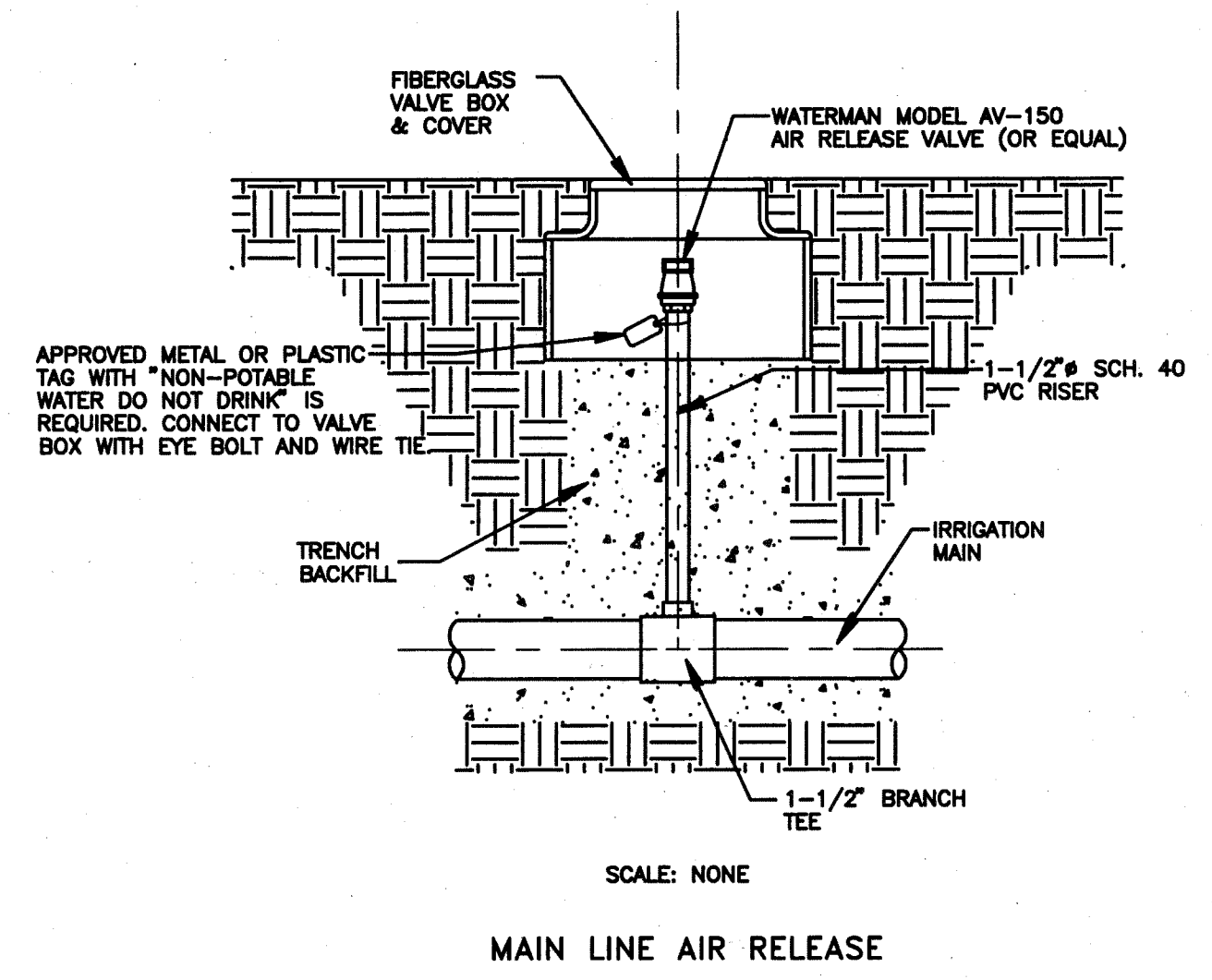
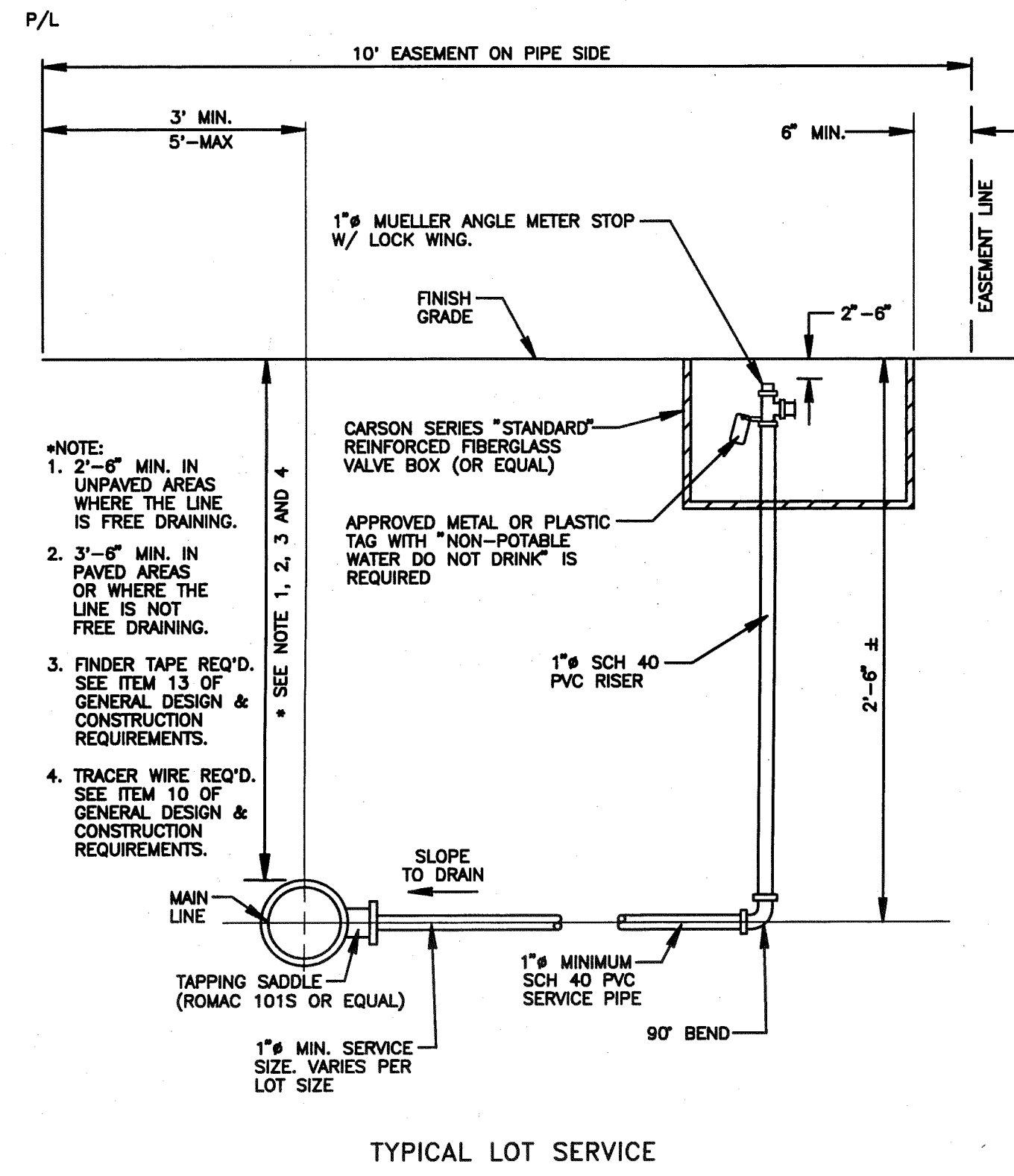
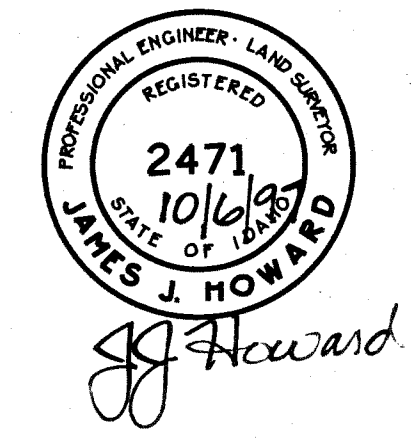
FARM #2



J.J. HOWARD
ENGINEERING / SURVEYING

1675-A HILL ROAD / BOISE, IDAHO 83702 1-208-344-0574

DATE: 9/09/97	DESIGN BY: JAP	SHEET: 4	OF 4
SCALE: 1" = 40'		DRAWING NO.	
DRAWN BY: JAP			
CAD DWG: FRM2IRR.DWG			



Farm 52