

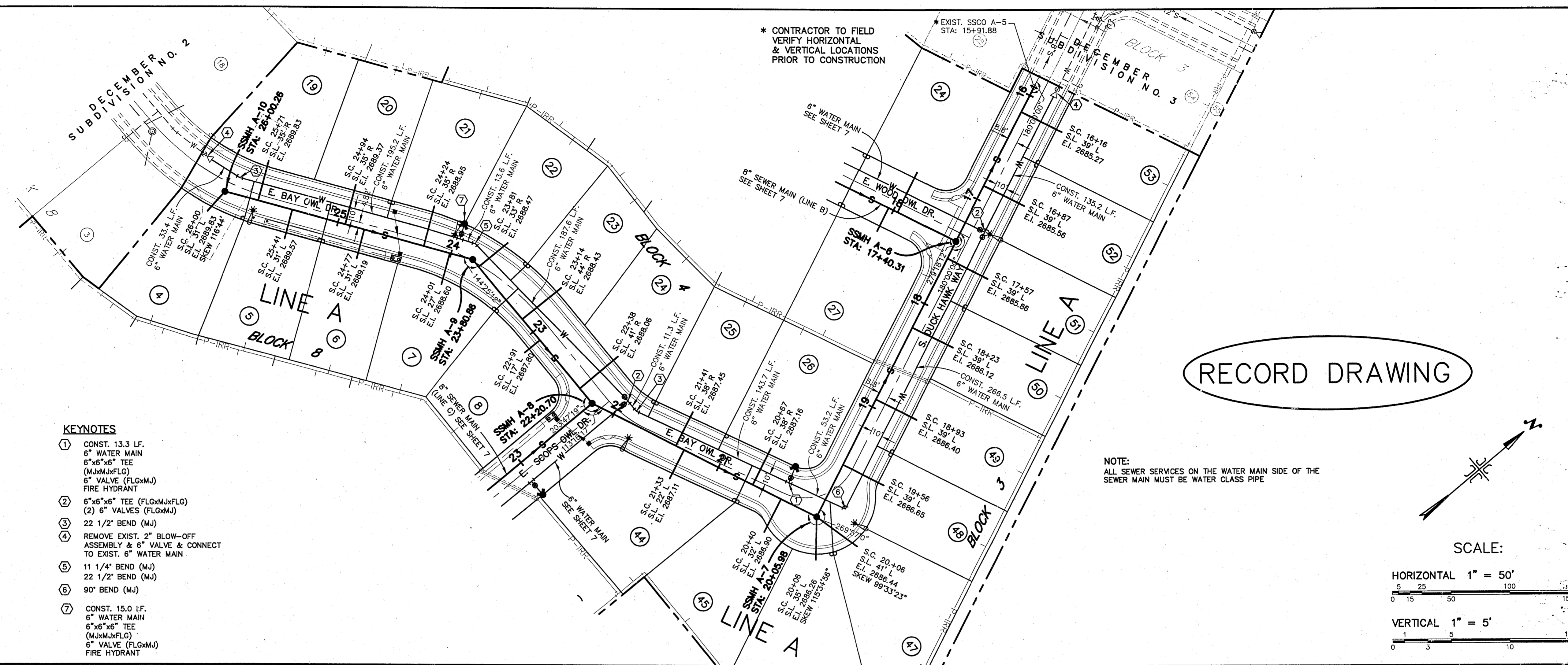
- LEGEND**
- PROPERTY LINE
 - RIGHT-OF-WAY LINE
 - CENTERLINE
 - S --- CONST. SANITARY SEWER LINE
 - CONST. SEWER MANHOLE
 - S --- EXIST. SANITARY SEWER LINE
 - EXIST. 5.0' SANITARY SEWER MANHOLE
 - W --- CONST. WATER LINE
 - W --- CONST. WATER SERVICE AND WATER METER
 - W --- EXIST. WATER SERVICE AND WATER METER
 - W --- EXIST. WATER LINE
 - S.C. SANITARY SEWER SERVICE CONNECTION - STATION
 - S.L. SANITARY SEWER SERVICE LINE - LT. OR RT.
 - E.I. END INVERT OF SANITARY SEWER SERVICE
 - CONST. WATER VALVE
 - EXIST. WATER VALVE
 - INSTALL 6" FIRE HYDRANT

- KEYNOTES**
- 1) CONST. 13.3 L.F. 6" WATER MAIN 6"x6"x6" TEE (MUMMFLG) 6" VALVE (FLGMJ) FIRE HYDRANT
 - 2) 6"x6"x6" TEE (FLGMJFLG) (2) 6" VALVES (FLGMJ)
 - 3) 22 1/2" BEND (MJ)
 - 4) REMOVE EXIST. 2" BLOW-OFF ASSEMBLY & 6" VALVE & CONNECT TO EXIST. 6" WATER MAIN
 - 5) 11 1/4" BEND (MJ) 22 1/2" BEND (MJ)
 - 6) 90° BEND (MJ)
 - 7) CONST. 15.0 L.F. 6" WATER MAIN 6"x6"x6" TEE (MUMMFLG) 6" VALVE (FLGMJ) FIRE HYDRANT

NOTES TO CONTRACTOR:

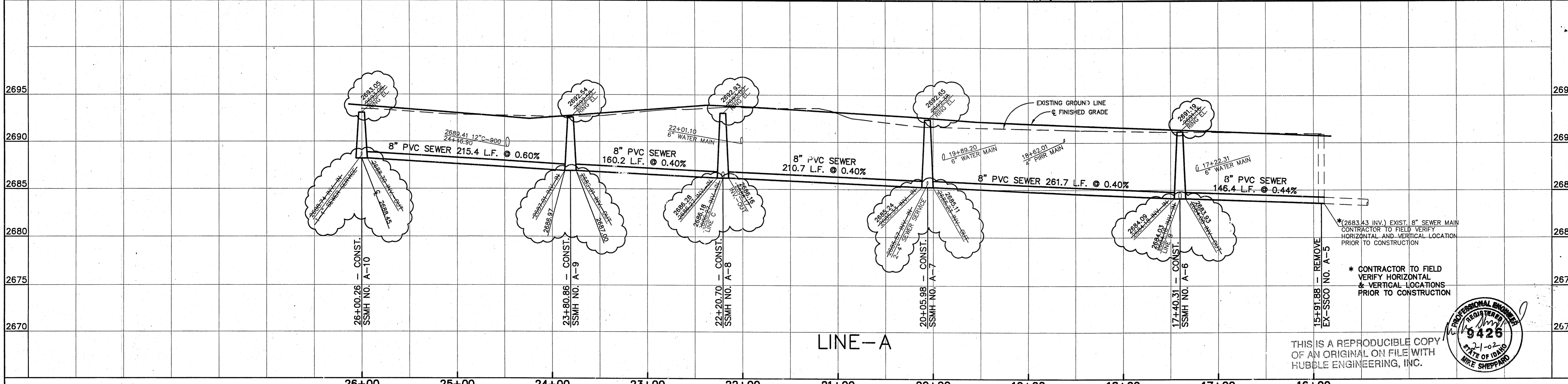
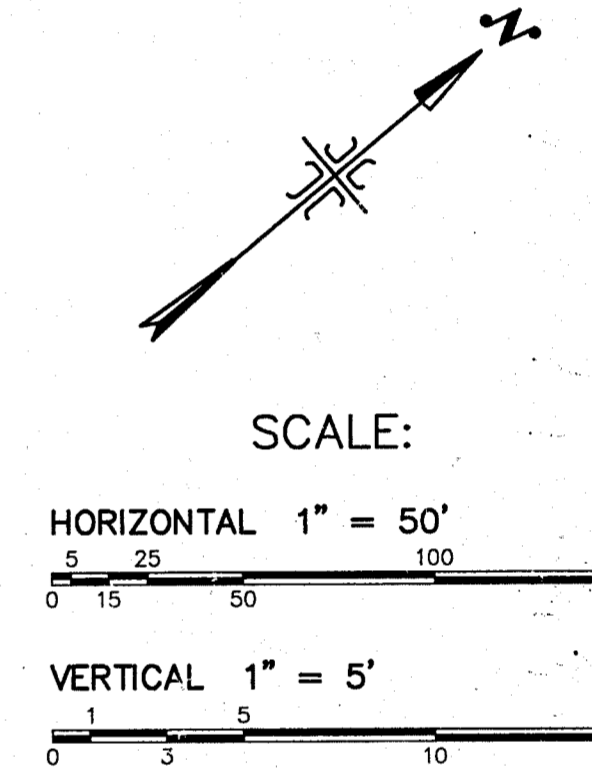
- 1) CONTRACTOR TO FIELD VERIFY ALL EXISTING CURB & GUTTER, STORM DRAIN, CHANNEL CROSSINGS, & SEWER ELEVATIONS OR INVERTS PRIOR TO CONSTRUCTION AND NOTIFY ENGINEER WHEN ELEVATIONS OR INVERTS DO NOT MATCH PLANS.
- 2) THE LOCATIONS OF EXISTING UNDERGROUND UTILITIES ARE SHOWN IN APPROXIMATE LOCATIONS. THE CONTRACTOR SHALL DETERMINE THE EXACT LOCATION OF ALL EXISTING UTILITIES BEFORE COMMENCING WORK. HE AGREES TO BE FULLY RESPONSIBLE FOR ANY AND ALL DAMAGES WHICH MIGHT BE OCCASIONED BY HIS FAILURE TO EXACTLY LOCATE AND PRESERVE ANY AND ALL UNDERGROUND UTILITIES.

THESE DRAWINGS, OR ANY PORTION THEREOF, SHALL NOT BE USED ON ANY PROJECT OR EXTENSIONS OF THIS PROJECT EXCEPT BY AGREEMENT IN WRITING WITH HUBBLE ENGINEERING, INC.



RECORD DRAWING

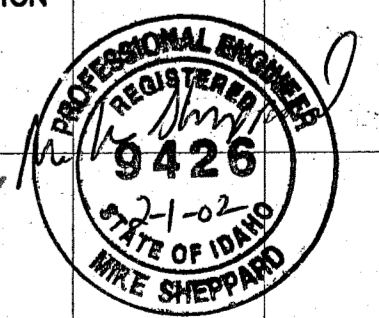
NOTE: ALL SEWER SERVICES ON THE WATER MAIN SIDE OF THE SEWER MAIN MUST BE WATER CLASS PIPE



DESIGNED BY:	DATE:	<p>HUBBLE ENGINEERING, INC. ENGINEERING-SURVEYING-PLANNING</p>	701 S. ALLEN ST. SUITE 102 MERIDIAN, IDAHO 83642 (208) 322-8992	DECEMBER SUBDIVISION NO. 4	LINE--A SEWER PLAN & PROFILE	JOB NO.
DRAWN BY:	DATE:					4-9924500
CHECKED BY:	DATE:					SHEET NO.
APPROVED:	DATE:					6
COGO FILE:	DATE:					
NO. REVISIONS	BY DATE REV. COGO FILE:	DATE:				

K:\BIRDS-0-PREY(4-99-238-00)\DRAWINGS\BIRDS OF PREY #4\BOP4_SEW1.DWG 6-18-01 10:57:30 am EST

DECEMBER #4



THIS IS A REPRODUCIBLE COPY OF AN ORIGINAL ON FILE WITH HUBBLE ENGINEERING, INC.

