

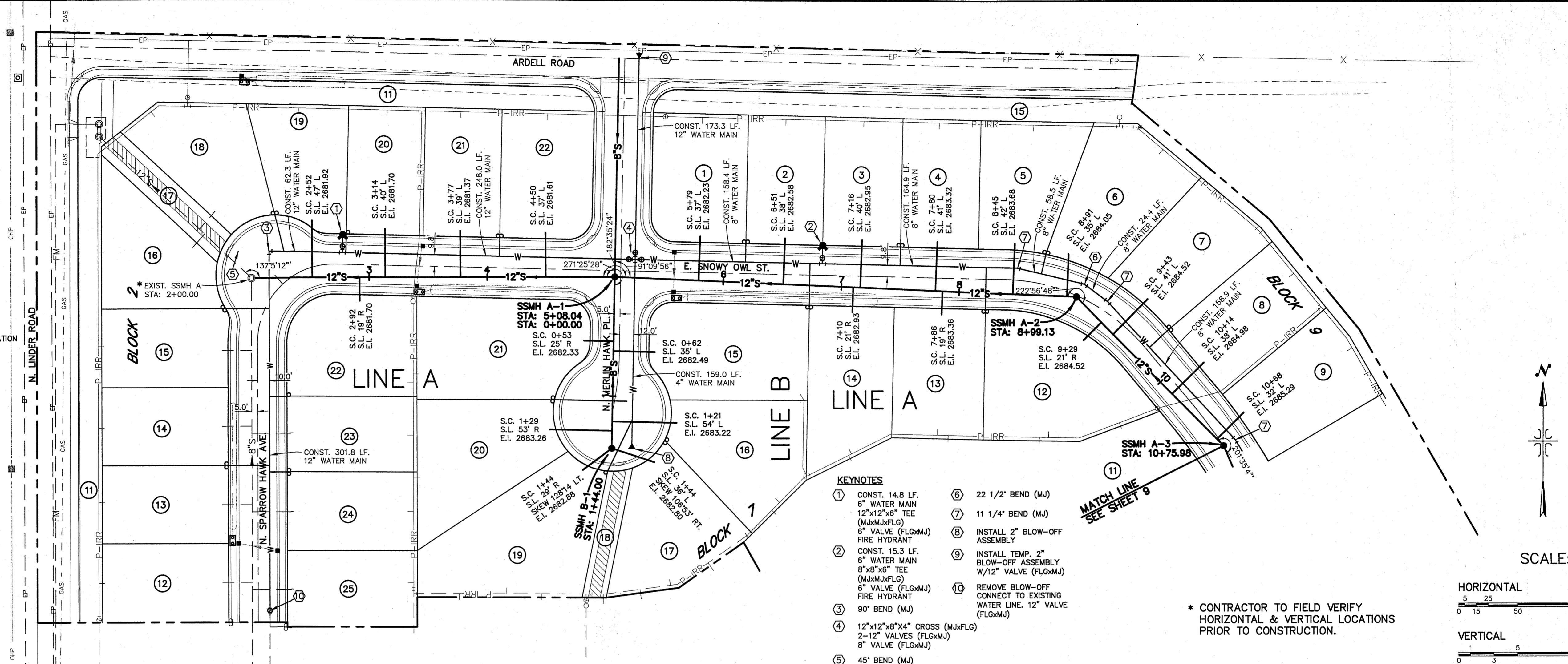
LEGEND

- PROPERTY LINE
- RIGHT-OF-WAY LINE
- CENTERLINE
- S --- CONST. SANITARY SEWER LINE
- --- CONST. SEWER MANHOLE
- S --- EXIST. SANITARY SEWER LINE
- ⊙ --- EXIST. 5.0' SANITARY SEWER MANHOLE
- W --- CONST. WATER LINE
- ⊖ --- CONST. WATER SERVICE AND WATER METER
- ⊖ --- EXIST. WATER SERVICE AND WATER METER
- W --- EXIST. WATER LINE
- S.C. --- SANITARY SEWER SERVICE CONNECTION - STATION
- S.L. --- SANITARY SEWER SERVICE LINE - LT. OR RT.
- E.I. --- END INVERT OF SANITARY SEWER SERVICE
- --- CONST. WATER VALVE
- ⊙ --- EXIST. WATER VALVE
- ⊖ --- INSTALL 6" FIRE HYDRANT

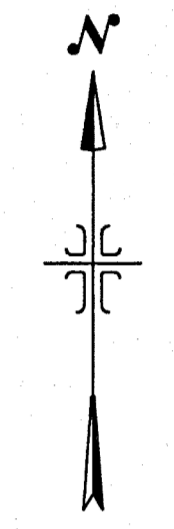
NOTES TO CONTRACTOR:

- 1) CONTRACTOR TO FIELD VERIFY ALL EXISTING CURB & GUTTER, STORM DRAIN, CHANNEL CROSSINGS, & SEWER ELEVATIONS OR INVERTS PRIOR TO CONSTRUCTION AND NOTIFY ENGINEER WHEN ELEVATIONS OR INVERTS DO NOT MATCH PLANS.
- 2) THE LOCATIONS OF EXISTING UNDERGROUND UTILITIES ARE SHOWN IN APPROXIMATE LOCATIONS. THE CONTRACTOR SHALL DETERMINE THE EXACT LOCATION OF ALL EXISTING UTILITIES BEFORE COMMENCING WORK. HE AGREES TO BE FULLY RESPONSIBLE FOR ANY AND ALL DAMAGES WHICH MIGHT BE OCCASIONED BY HIS FAILURE TO EXACTLY LOCATE AND PRESERVE ANY AND ALL UNDERGROUND UTILITIES.

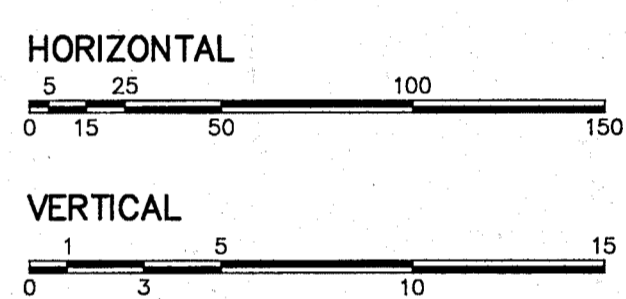
THESE DRAWINGS, OR ANY PORTION THEREOF, SHALL NOT BE USED ON ANY PROJECT OR EXTENSIONS OF THIS PROJECT EXCEPT BY AGREEMENT IN WRITING WITH HUBBLE ENGINEERING, INC.



- KEYNOTES**
- 1) CONST. 14.8 LF. 6" WATER MAIN 12"x12"x6" TEE (M.JxMxFLG) 6" VALVE (FLGxM.J)
 - 2) CONST. 15.3 LF. 6" WATER MAIN 8"x8"x6" TEE (M.JxMxFLG) 6" VALVE (FLGxM.J) FIRE HYDRANT
 - 3) 90° BEND (M.J)
 - 4) 12"x12"x8"x4" CROSS (M.JxFLG) 2-12" VALVES (FLGxM.J) 8" VALVE (FLGxM.J)
 - 5) 45° BEND (M.J)
 - 6) 22 1/2" BEND (M.J)
 - 7) 11 1/4" BEND (M.J)
 - 8) INSTALL 2" BLOW-OFF ASSEMBLY
 - 9) INSTALL TEMP. 2" BLOW-OFF ASSEMBLY W/12" VALVE (FLGxM.J)
 - 10) REMOVE BLOW-OFF CONNECT TO EXISTING WATER LINE. 12" VALVE (FLGxM.J)

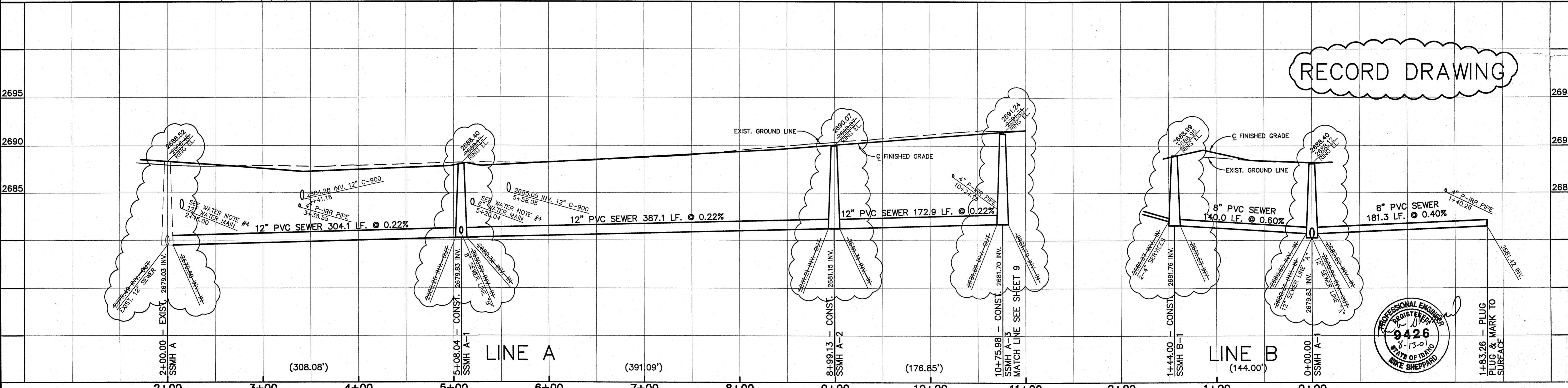


SCALE:



* CONTRACTOR TO FIELD VERIFY HORIZONTAL & VERTICAL LOCATIONS PRIOR TO CONSTRUCTION.

RECORD DRAWING



MARK AS-BUILT ELEVATIONS ON PROFILE	KCH	8/10/01	DESIGNED BY:	DATE:
ADJUST ARDELL RD. AND COMMON LOT TO 20' WIDE	MS	3-15-01	DRAWN BY:	DATE:
ADJUST LOTS 11, 18-22 BLK. 2; LOTS 1-15 BLK. 9	MS	2-13-01	CHECKED BY:	DATE:
COMMON LOTS AND P-IRR, SEWER AND WATER PER KUNA CITY	MS	7-19-00	APPROVED:	DATE:
REVISED STREET NAMES	MS	5-17-00	COGO FILE:	DATE:
NO. REVISIONS	BY	DATE	REV. COGO FILE:	DATE:

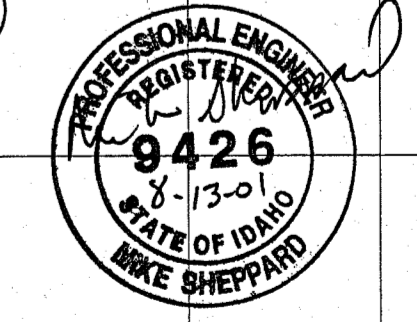
HUBBLE ENGINEERING, INC.
ENGINEERING-SURVEYING-PLANNING

701 S. ALLEN ST.
SUITE 102
MERIDIAN, IDAHO 83642
(208) 322-8992

DECEMBER SUBDIVISION NO. 3

LINE A & LINE B
SEWER PLAN & PROFILE

JOB NO. 4-99244
SHEET NO. 8



December 4/3

