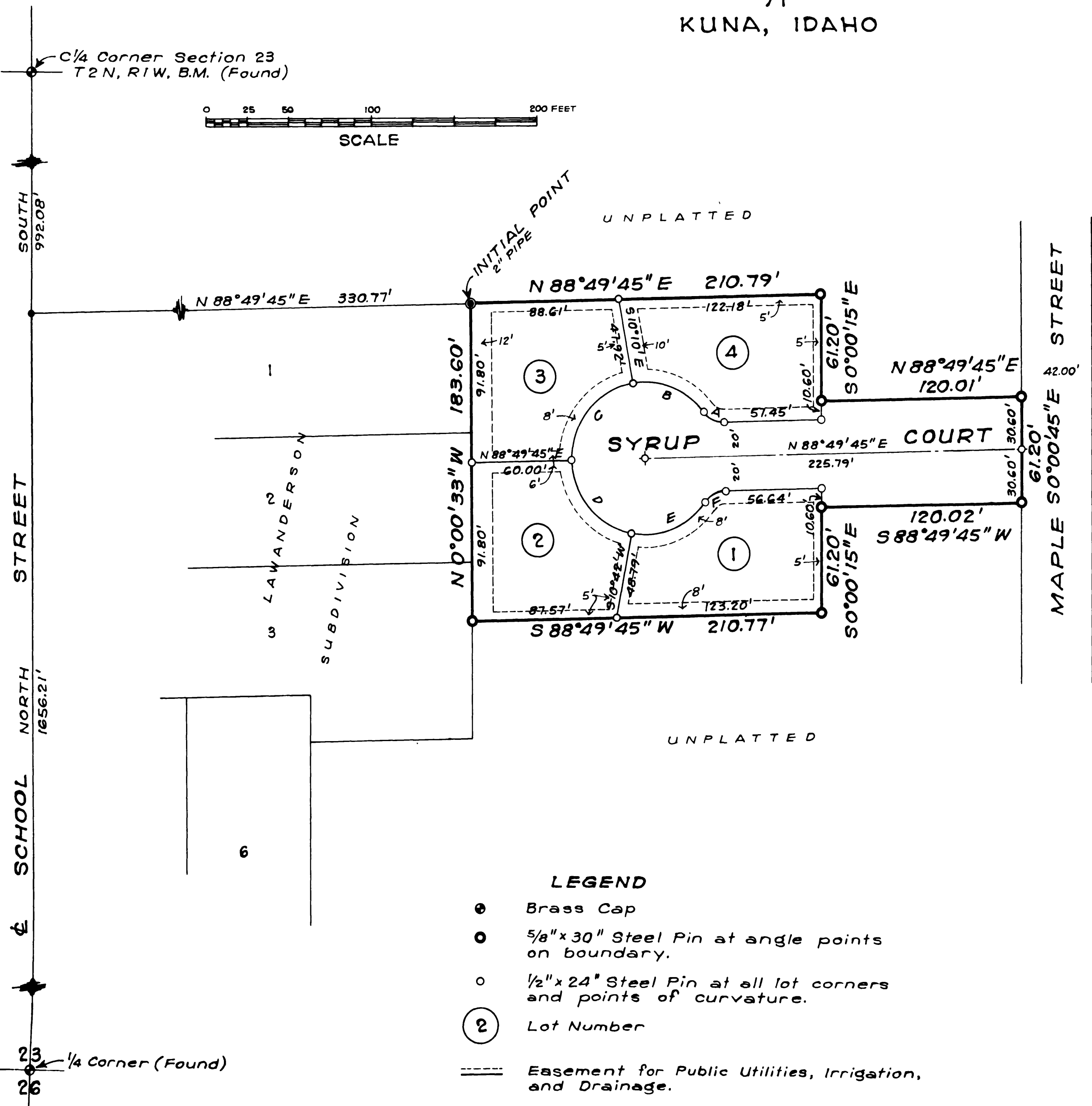


# THREE "M" SUBDIVISION

## PART OF THE NW<sup>1</sup>SE<sup>4</sup> SECTION 23, T.2N., R.1W., B.M. ADA COUNTY, IDAHO.

HOFFMANN, FISKE, & WYATT CONSULTING ENGINEERS

1978  
KUNA, IDAHO



CURVE DATA

CURVE	Δ	R	L	T	LONG CHORD DISTANCE	BEARING
A	54°19'11"	15.00'	14.22'	7.70'	13.69'	N64°00'39"W
B	63°18'57"	45.00'	49.73'	27.75'	47.24'	N68°30'31"W
C	81°00'15"	45.00'	63.62'	38.44'	58.45'	S59°19'52"W
D	78°07'45"	45.00'	61.36'	36.52'	56.72'	S40°14'08"E
E	66°11'24"	45.00'	51.99'	29.33'	49.14'	N67°36'18"E
F	54°19'08"	15.00'	14.22'	7.70'	13.69'	N61°40'11"E

TEED'S ADDITION TO KUNA

- LEGEND**
- Brass Cap
  - 5/8"x30" Steel Pin at angle points on boundary.
  - 1/2"x24" Steel Pin at all lot corners and points of curvature.
  - ② Lot Number
  - Easement for Public Utilities, Irrigation, and Drainage.

