

CURVE TABLE

NUMBER	ARC LENGTH	RADIUS	DELTA ANGLE	TANGENT	CHORD DIRECTION	CHORD LENGTH
C1	62.83	40.00	90°00'00"	40.00	N 45°00'00" W	56.57
C2	21.19	90.00	13°29'16"	10.64	N 06°44'38" W	21.14
C3	38.24	90.00	24°20'49"	19.42	N 25°39'41" W	37.96
C4	38.24	90.00	24°20'49"	19.42	N 50°00'30" W	37.96
C5	43.70	90.00	27°49'05"	22.29	N 76°05'27" W	43.27
C6	102.10	65.00	90°00'00"	65.00	S 45°00'00" E	91.92
C7	62.83	40.00	90°00'00"	40.00	S 45°00'00" E	56.57
C8	30.59	90.00	19°28'16"	15.44	S 57°22'05" E	30.44
C9	55.95	90.00	35°37'04"	28.91	S 29°49'25" E	55.05
C10	102.10	65.00	90°00'00"	65.00	N 45°00'00" W	91.92
C11	35.97	90.00	22°53'47"	18.23	S 78°33'07" E	35.73
C12	18.87	90.00	12°00'53"	9.47	S 06°00'27" E	18.84

LINE TABLE

NUMBER	DIRECTION	DISTANCE
L1	N 45°00'00" E	28.28'
L2	S 45°00'00" E	28.28'
L3	S 45°00'00" E	28.28'
L4	N 45°00'00" E	28.28'
L5	S 45°00'00" E	28.28'
L6	N 45°00'00" E	28.28'
L7	S 45°00'00" W	28.28'
L8	S 45°00'00" E	28.28'
L9	N 45°00'00" E	28.28'
L10	N 45°00'00" W	28.28'
L11	N 45°03'20" E	14.13'
L12	S 44°56'40" E	14.16'
L13	S 11°00'00" E	10.19'
L14	S 00°01'05" E	10.00'
L15	N 22°53'47" E	53.72'
L16	S 22°53'47" W	35.03'
L17	S 00°01'05" E	9.00'
L18	N 45°03'20" E	12.72'
L19	N 44°56'40" W	12.74'
L20	N 11°00'00" W	9.17'

PLAT OF
SUTTERS MILL SUBDIVISION NO. 5

A RESUBDIVISION OF PORTIONS OF LOTS 6, 7 & 8
RADER AND KROEGER'S SUBDIVISION,
LYING IN THE NE 1/4, SECTION 27, T.2N., R.1W., B.M.,
KUNA, ADA COUNTY, IDAHO
2006

HEALTH CERTIFICATE

SANITARY RESTRICTIONS AS REQUIRED BY IDAHO CODE, TITLE 50, CHAPTER 13 HAVE NOT BEEN SATISFIED AND ARE IN FORCE FOR THE FOLLOWING LOTS:

- BLOCK 8, LOT(S) - 24, 25
- BLOCK 10, LOT(S) - 10, 16
- BLOCK 11, LOT(S) - 1, 2, 3, 4, 5, 6, 7
- BLOCK 12, LOT(S) - 1, 2, 3, 4, 5, 6, 7, 8

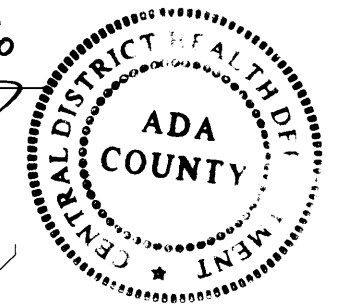
NO OWNER SHALL CONSTRUCT ANY BUILDING, DWELLING, OR SHELTER WHICH NECESSITATES THE SUPPLYING OF WATER OR SEWAGE FACILITIES FOR PERSONS USING SUCH PREMISES UNTIL SANITARY RESTRICTION REQUIREMENTS ARE SATISFIED AND LIFTED.

Found Brass Cap
C.P.&F. No. 9262682

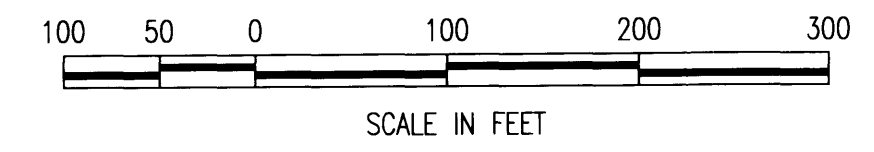
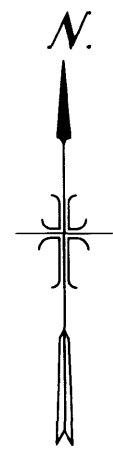
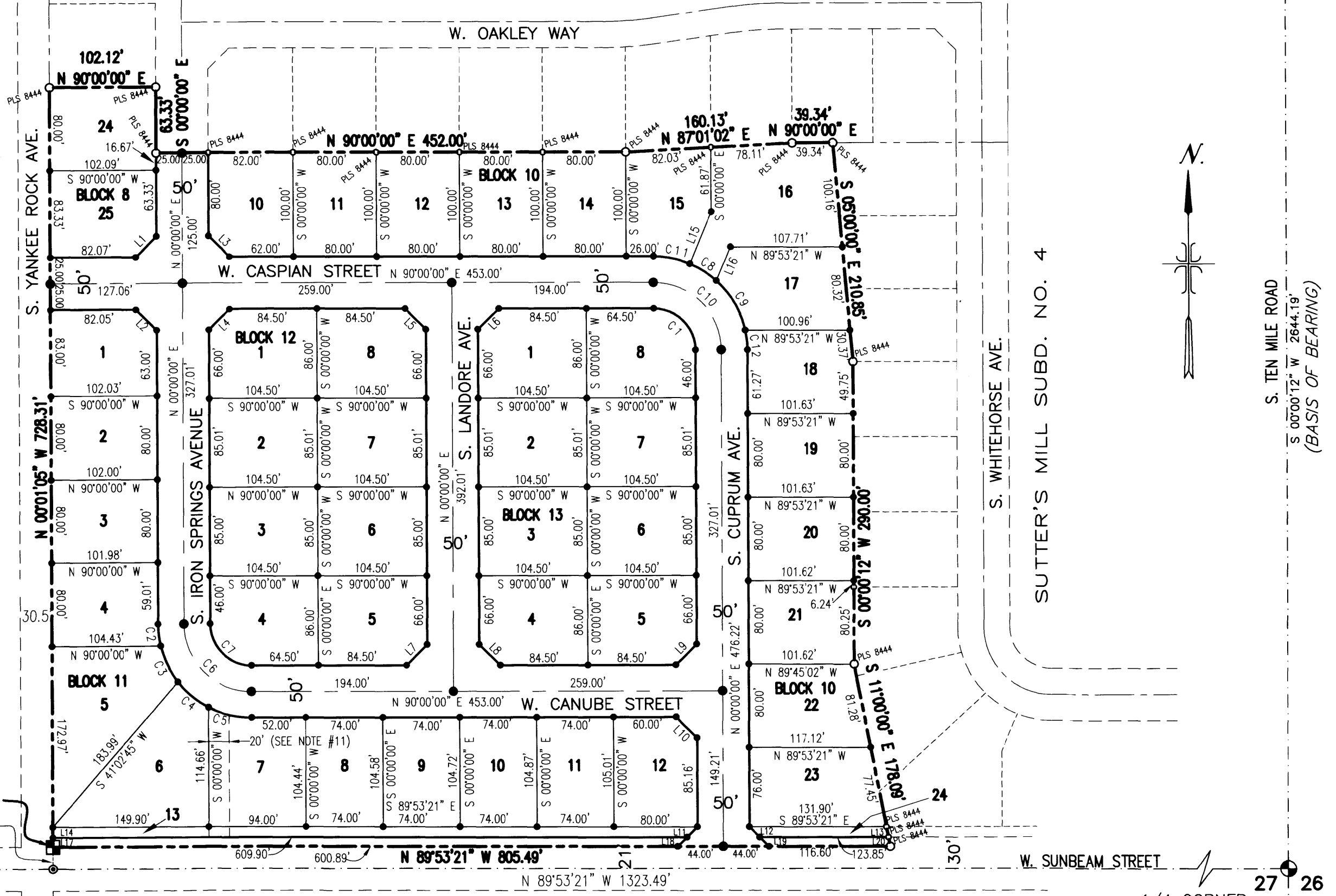


CENTRAL DISTRICT HEALTH DEPARTMENT

DATE: 5/9/06



SUTTER'S MILL SUBD. NO. 3



LEGEND

- REAL POINT OF BEGINNING, SET 5/8"X30" REBAR WITH PLASTIC CAP
- FOUND BRASS OR ALUMINUM CAP (AS NOTED)
- SET 5/8"X30" REBAR WITH PLASTIC CAP
- SET 1/2"X24" REBAR WITH PLASTIC CAP
- FOUND 5/8" REBAR (PLS 4998 OR AS NOTED)
- FOUND 1/2" REBAR (PLS 4998 OR AS NOTED)
- CALCULATED POINT-NOT SET
- BOUNDARY LINE
- SECTION LINE
- RIGHT-OF-WAY LINE
- CENTERLINE
- LOT LINE
- EASEMENT LINE
- EXISTING PROPERTY LINE
- EXISTING RIGHT OF WAY
- EXISTING CENTERLINE



REAL POINT OF BEGINNING
N 00°01'05" W 21.00'
C.1/4 CORNER
Found 5/8" Rebar
C.P.&F. No. 9142691

1/4 CORNER
Found Aluminum Cap
C.P.&F. No. 104014757

ANCELLE DEVELOPMENT, INC.
DEVELOPER
BOISE, IDAHO

BRIGGS ENGINEERING, INC.
CONSULTING ENGINEERS
BOISE, IDAHO

