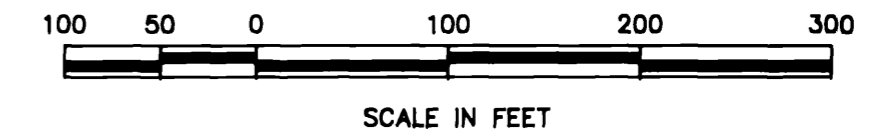


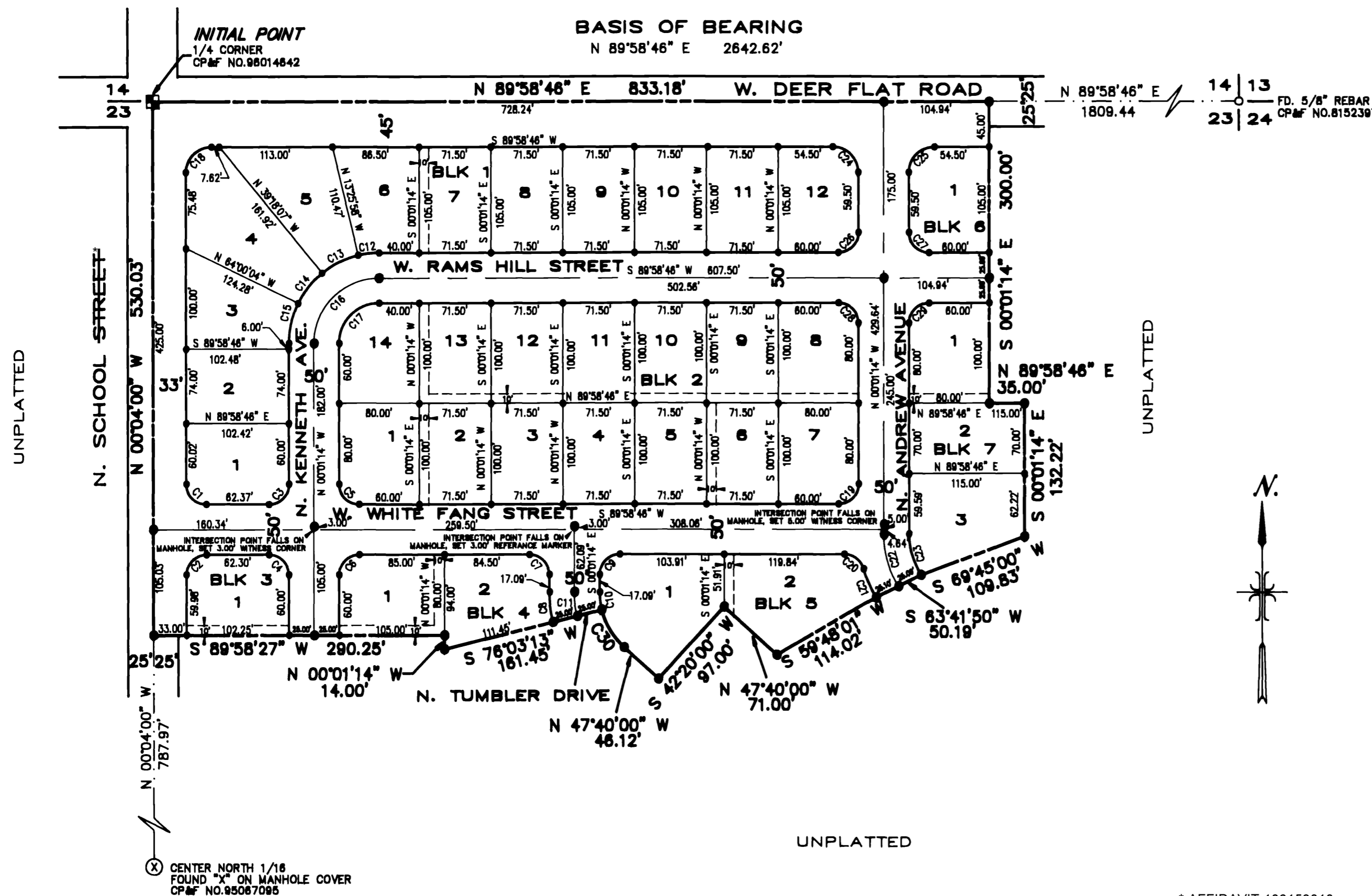
PLAT OF
SUMMIT VIEW SUBDIVISION NO. 1

A PORTION OF THE NW 1/4 NE 1/4, SECTION 23, T.2N., R.1W., B.M.,
CITY OF KUNA, ADA COUNTY, IDAHO

1996



UNPLATTED



PLAT LEGEND

- Found Brass Cap, Accepted and Used as INITIAL POINT Monument
- Found Brass Cap
- Set 5/8"x 30" Rebar with Plastic Cap
- Set 1/2"x 24" Rebar with Plastic Cap
- Boundary Line
- Right-of-Way Line
- Lot Line
- Centerline
- Property Drainage, Public Utility and Irrigation Easement (unless otherwise designated)

CURVE TABLE

CURVE	DELTA	RADIUS	ARC	CHORD	TANGENT	CHORD BRG
1	89° 57' 14"	20.00	31.40	28.27	19.98	S 45° 02' 37" E
2	90° 02' 46"	20.00	31.43	28.30	20.02	S 44° 57' 23" W
3	90° 00' 00"	20.00	31.42	28.28	20.00	N 44° 58' 46" E
4	90° 00' 00"	20.00	31.42	28.28	20.00	N 45° 01' 14" W
5	90° 00' 00"	20.00	31.42	28.28	20.00	S 45° 01' 14" E
6	90° 00' 00"	20.00	31.42	28.28	20.00	S 44° 58' 46" W
7	90° 00' 00"	20.00	31.42	28.28	20.00	N 45° 01' 14" W
8	13° 55' 33"	125.00	30.38	30.31	15.27	S 08° 59' 01" E
9	90° 00' 00"	20.00	31.42	28.28	20.00	S 44° 58' 46" W
10	13° 55' 33"	75.00	18.23	18.18	9.18	S 08° 59' 01" E
11	13° 55' 33"	100.00	24.31	24.25	12.21	S 08° 59' 01" E
12	13° 24' 44"	90.00	21.07	21.02	10.58	S 83° 18' 24" W
13	25° 52' 09"	90.00	40.84	40.28	20.87	S 83° 37' 57" W
14	24° 41' 57"	90.00	38.80	38.50	18.70	S 38° 20' 54" W
15	28° 01' 10"	90.00	40.87	40.52	20.79	S 12° 59' 21" W
16	90° 00' 00"	95.00	102.10	91.92	65.00	S 44° 58' 46" W
17	90° 00' 00"	40.00	62.83	56.57	40.00	S 44° 58' 46" W
18	90° 02' 46"	25.50	40.08	36.08	25.52	S 44° 57' 23" W
19	90° 00' 00"	20.00	31.42	28.28	20.00	N 44° 58' 46" E
20	73° 49' 00"	20.00	25.77	24.02	15.02	N 53° 06' 44" W
21	13° 59' 45"	125.00	30.53	30.46	15.34	S 23° 12' 08" E
22	31° 08' 40"	100.00	54.30	53.63	27.84	S 15° 34' 34" E
23	32° 47' 09"	75.00	42.92	42.33	22.06	S 18° 24' 48" E
24	90° 00' 00"	25.50	40.06	36.06	25.50	N 45° 01' 14" W
25	90° 00' 00"	25.50	40.06	36.06	25.50	S 44° 58' 46" W
26	90° 00' 00"	20.00	31.42	28.28	20.00	N 44° 58' 46" E
27	90° 00' 00"	20.00	31.42	28.28	20.00	S 45° 01' 14" E
28	90° 00' 00"	20.00	31.42	28.28	20.00	N 45° 01' 14" W
29	90° 00' 00"	20.00	31.42	28.28	20.00	S 44° 58' 46" W
30	33° 43' 13"	75.00	44.14	43.51	22.73	N 30° 48' 24" W

* AFFIDAVIT 106153010
CHANGE N SCHOOL ST
TO N SCHOOL AVE

NOTES

- DIRECT LOT ACCESS TO W. DEER FLAT ROAD AND N. SCHOOL STREET IS PROHIBITED.
- THESE LOTS ARE HEREBY DESIGNATED AS HAVING A PERMANENT EASEMENT FOR PUBLIC UTILITIES, DRAINAGE, SEWER, IRRIGATION AND STREET LIGHTS OVER THE TEN (10) FEET ADJACENT TO ANY PUBLIC STREET. THIS EASEMENT SHALL NOT PRECLUDE THE CONSTRUCTION OF HARD-SURFACED DRIVEWAYS AND WALKWAYS TO EACH LOT.
- UNLESS OTHERWISE DESIGNATED OR DIMENSIONED, THERE SHALL BE A FIVE (5) FOOT PROPERTY DRAINAGE, PUBLIC UTILITY AND IRRIGATION EASEMENT ADJACENT TO ALL LOT LINES INSIDE THIS SUBDIVISION WHICH DO NOT FRONT A PUBLIC STREET.
- ANY RESUBDIVISION OF THIS PLAT SHALL COMPLY WITH THE APPLICABLE ZONING REGULATIONS IN EFFECT AT THE TIME OF THE RESUBDIVISION.
- THIS SUBDIVISION IS SUBJECT TO COMPLIANCE WITH THE IDAHO CODE SECTION 31-3805.
- BUILDING SETBACK DIMENSIONS IN THIS SUBDIVISION SHALL CONFORM TO THE APPLICABLE ZONING REGULATIONS IN EFFECT AT THE TIME OF ISSUANCE OF A BUILDING PERMIT.
- THIS SUBDIVISION IS SUBJECT TO THE REQUIREMENTS OF THE UNIFORM BUILDING CODE.



SUMMIT VIEW DEVELOPMENT INC.
Developer
Boise, Idaho

BRIGGS ENGINEERING, INC.
Consulting Engineers
Boise, Idaho

