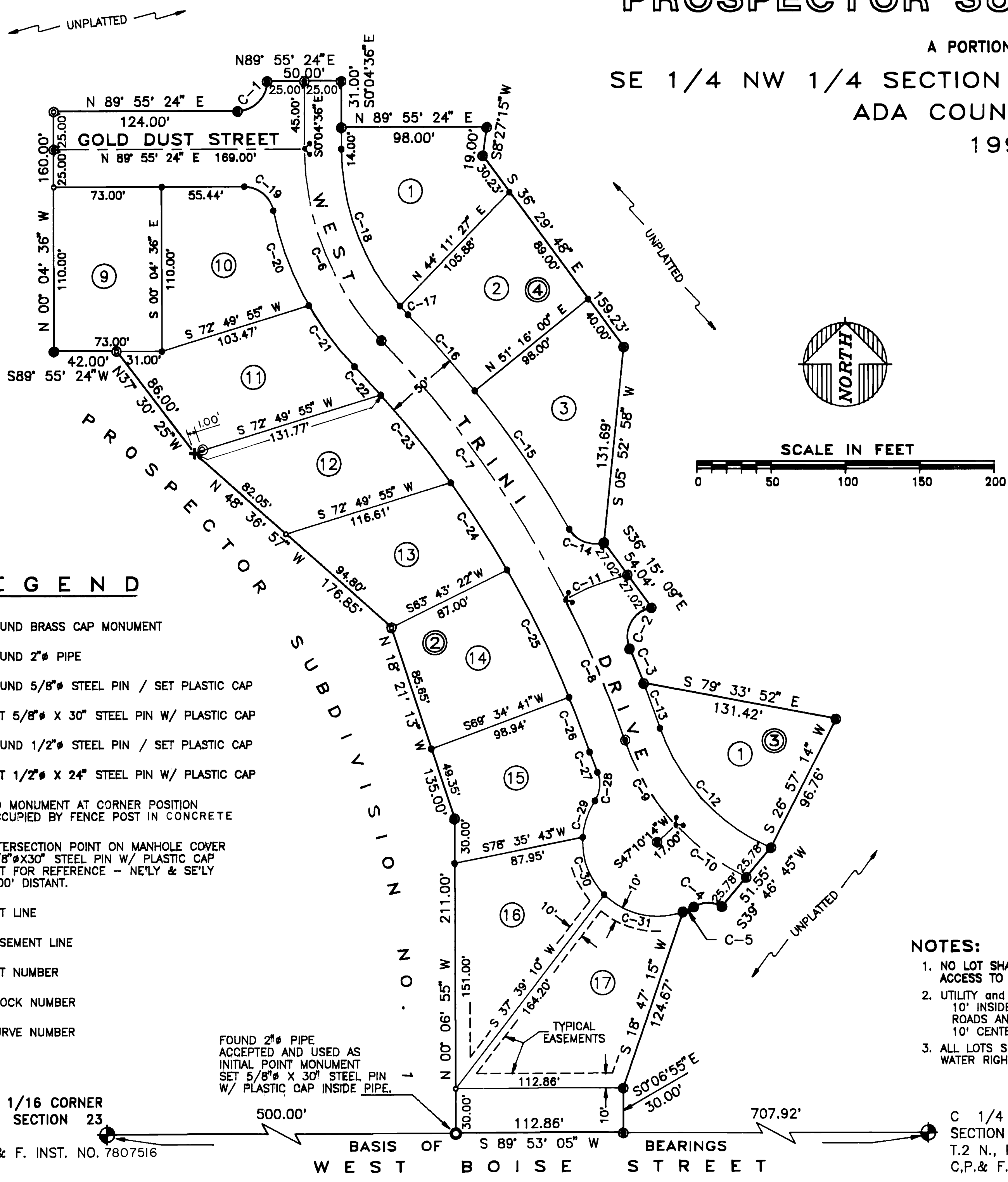


PROSPECTOR SUBDIVISION NO. 2

A PORTION OF THE
SE 1/4 NW 1/4 SECTION 23, T.2 N., R.1 W., B.M.
ADA COUNTY, IDAHO
1993



LEGEND

- FOUND BRASS CAP MONUMENT
- FOUND 2" PIPE
- FOUND 5/8" STEEL PIN / SET PLASTIC CAP
- SET 5/8" X 30" STEEL PIN W/ PLASTIC CAP
- FOUND 1/2" STEEL PIN / SET PLASTIC CAP
- SET 1/2" X 24" STEEL PIN W/ PLASTIC CAP
- + NO MONUMENT AT CORNER POSITION OCCUPIED BY FENCE POST IN CONCRETE
- INTERSECTION POINT ON MANHOLE COVER 5/8" X 30" STEEL PIN W/ PLASTIC CAP SET FOR REFERENCE - NE'LY & SE'LY 5.00' DISTANT.
- LOT LINE
- - - EASEMENT LINE
- ⑫ LOT NUMBER
- ③ BLOCK NUMBER
- C-28 CURVE NUMBER

FOUND 2" PIPE ACCEPTED AND USED AS INITIAL POINT MONUMENT SET 5/8" X 30" STEEL PIN W/ PLASTIC CAP INSIDE PIPE.

C-W 1/16 CORNER SECTION 23
C.P. & F. INST. NO. 7807516

BASIS OF WEST BOISE STREET BEARINGS

NOTES:

1. NO LOT SHALL HAVE DIRECT ACCESS TO BOISE STREET.
2. UTILITY and DRAINAGE EASEMENT 10' INSIDE ALL LOT LINES ADJACENT TO ROADS AND SUBDIVISION BOUNDARIES. 10' CENTERED ON ALL INTERIOR LOT LINES.
3. ALL LOTS SITUATE IN BOISE-KUNA IRRIGATION DISTRICT. WATER RIGHT WAS REMOVED IN MARCH 1979.

C 1/4 CORNER SECTION 23
T.2 N., R.1 W., B.M.
C.P. & F. INST. NO. 7807517

CURVE TABLE					
Curve	Radius	Length	Δ	Chd. Bearing	Chord
C-1	20.00'	31.42'	90° 00' 00"	N 44° 55' 24" E	28.28'
C-2	20.00'	35.90'	102° 50' 22"	S 28° 09' 03" W	31.27'
C-3	750.00'	25.00'	1° 54' 35"	S 22° 18' 51" E	25.00'
C-4	20.00'	19.93'	57° 05' 01"	S 89° 14' 20" W	19.11'
C-5	50.00'	8.01'	9° 10' 38"	S 65° 17' 08" W	8.00'
C-6	185.00'	141.59'	43° 51' 05"	S 22° 00' 09" E	138.16'
C-7	725.00'	213.78'	18° 53' 37"	S 35° 28' 53" E	212.99'
C-8	725.00'	102.50'	8° 06' 02"	S 22° 59' 03" E	102.42'
C-9	180.00'	86.73'	23° 53' 45"	S 30° 52' 54" E	66.25'
C-10	180.00'	59.48'	21° 17' 58"	S 53° 28' 45" E	59.14'
C-11	180.00'	45.01'	14° 19' 37"	N 68° 36' 50" E	44.89'
C-12	135.00'	112.72'	47° 50' 18"	N 42° 51' 12" W	109.47'
C-13	750.00'	31.75'	2° 25' 31"	N 20° 08' 48" W	31.75'
C-14	20.00'	26.84'	76° 53' 20"	N 68° 34' 43" W	24.87'
C-15	750.00'	112.56'	8° 35' 57"	N 34° 26' 02" W	112.46'
C-16	750.00'	68.00'	5° 11' 41"	N 41° 19' 50" W	67.98'
C-17	180.00'	8.00'	2° 51' 53"	N 42° 29' 44" W	8.00'
C-18	180.00'	114.46'	40° 59' 12"	N 20° 34' 12" W	112.03'
C-19	20.00'	27.48'	78° 43' 02"	S 50° 43' 05" E	25.37'
C-20	210.00'	68.13'	18° 35' 18"	S 20° 39' 14" E	67.83'
C-21	210.00'	51.24'	13° 58' 48"	S 36° 56' 17" E	51.11'
C-22	700.00'	26.00'	2° 07' 41"	S 42° 51' 50" E	26.00'
C-23	700.00'	75.30'	6° 08' 47"	S 38° 43' 06" E	75.26'
C-24	700.00'	69.70'	5° 42' 19"	S 32° 47' 03" E	69.67'
C-25	700.00'	95.00'	7° 46' 33"	S 26° 02' 37" E	94.93'
C-26	700.00'	39.38'	3° 13' 19"	S 20° 32' 41" E	39.36'
C-27	185.00'	14.55'	4° 30' 22"	S 21° 11' 13" E	14.55'
C-28	20.00'	19.93'	57° 05' 01"	S 05° 06' 07" W	19.11'
C-29	50.00'	26.17'	29° 59' 33"	S 18° 38' 51" W	25.88'
C-30	50.00'	42.24'	48° 24' 35"	S 20° 33' 13" E	41.00'
C-31	50.00'	57.04'	65° 22' 02"	S 77° 26' 32" E	54.00'

PROSPECTOR SUBDIVISION NO. 2
SHEET 1 OF 2

SMITH & KANGAS ENGINEERS, INC.

1797 LINDA VISTA LANE
BOISE, IDAHO 83704
(208) 379-0781

P.O. BOX 388
DONNELLY, IDAHO 83618
(208) 388-0788

