

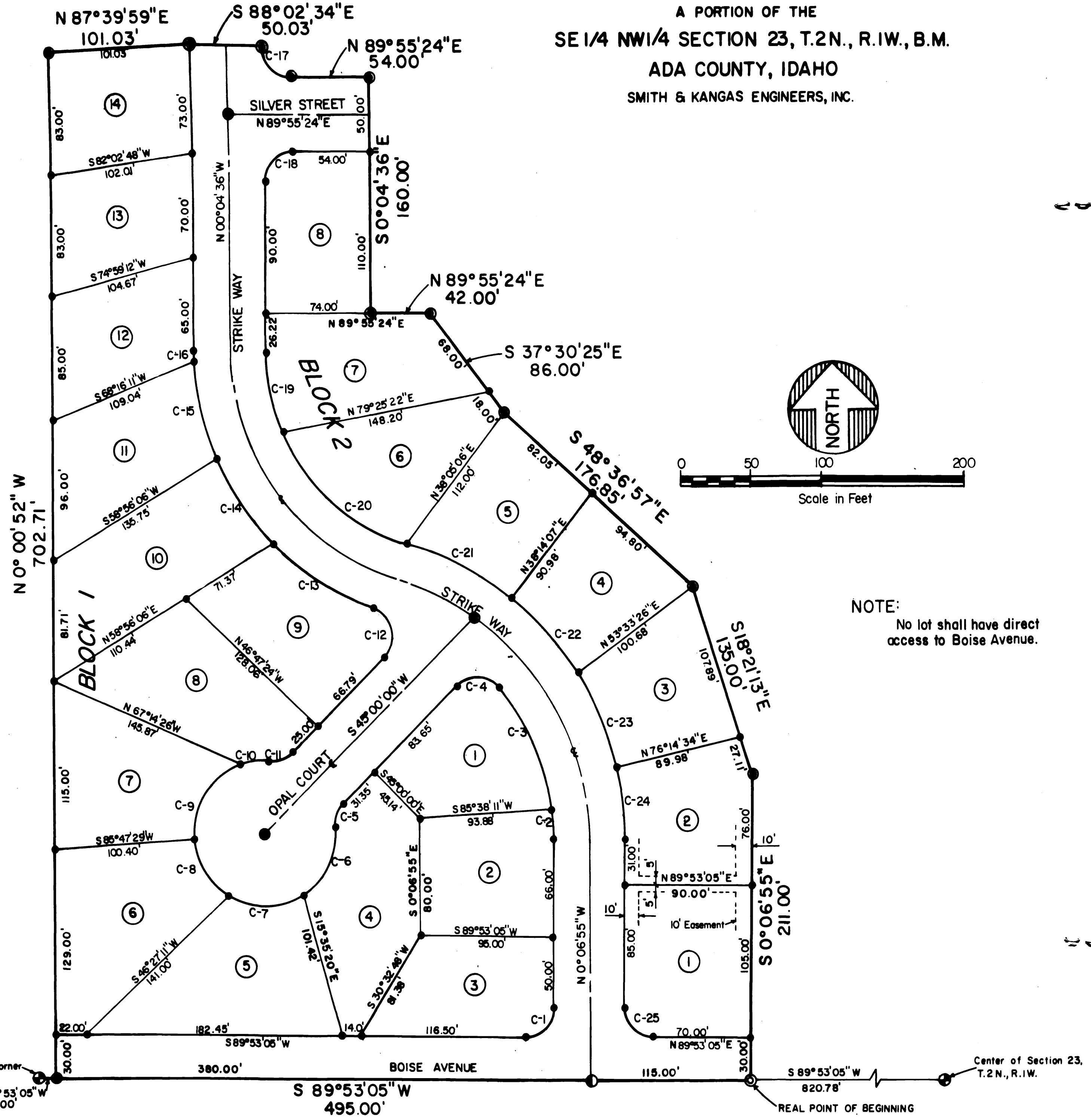
PROSPECTOR SUBDIVISION NO.1

A PORTION OF THE
SE 1/4 NW 1/4 SECTION 23, T.2N., R.1W., B.M.

ADA COUNTY, IDAHO
SMITH & KANGAS ENGINEERS, INC.

LEGEND

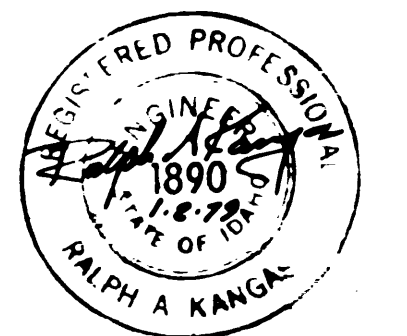
- Brass Cap
- ⊙ 2" Diameter Galvanized Iron Pipe
- ⊙ Aluminum Cap
- 1/2" x 24" Steel Pin at Lot Corners.
- 5/8" x 30" Steel Pin at Angle Points on Boundary.
- ⑤ Lot Numbers
- 10' Utility and Drainage Easement
10' Inside All Lot Lines Along Roads and Subdivision Boundary
10' Centered on All Interior Lot Lines
- c-1 Curve Numbers



NOTE:
No lot shall have direct access to Boise Avenue.

CURVE TABLE

Curve	Radius	Δ	Length	Ch. Length	Ch. Bearing
C-1	20.00'	90°00'00"	31.42'	28.28'	S 44°53'05" W
C-2	160.00'	7°31'32"	21.02'	21.00'	S 3°52'41" E
C-3	160.00'	32°55'54"	91.96'	90.70'	S 24°06'24" E
C-4	20.00'	94°25'39"	32.96'	29.36'	S 87°47'10" E
C-5	20.00'	49°59'41"	17.45'	16.90'	N 20°00'09" E
C-6	50.00'	62°00'03"	54.11'	51.51'	N 26°00'20" E
C-7	50.00'	64°00'39"	55.86'	53.00'	N 89°00'42" E
C-8	50.00'	54°46'27"	47.80'	46.00'	S 31°35'45" E
C-9	50.00'	76°07'47"	66.44'	61.66'	S 33°51'22" W
C-10	50.00'	23°04'26"	20.14'	20.00'	S 83°27'28" W
C-11	20.00'	49°59'41"	17.45'	16.90'	S 69°59'51" W
C-12	20.00'	116°29'13"	40.66'	34.01'	S 13°14'37" E
C-13	185.00'	26°17'45"	84.91'	84.16'	S 58°20'21" E
C-14	185.00'	21°50'44"	70.54'	70.11'	S 34°16'07" E
C-15	185.00'	21°10'50"	68.39'	68.00'	S 12°45'20" E
C-16	185.00'	2°05'19"	6.74'	6.74'	S 1°07'16" E
C-17	20.00'	90°00'00"	31.42'	28.28'	S 45°04'36" E
C-18	20.00'	90°00'00"	31.42'	28.28'	N 44°55'24" E
C-19	135.00'	23°56'27"	56.41'	56.00'	N 12°02'50" W
C-20	135.00'	50°57'22"	119.28'	115.44'	N 49°14'44" W
C-21	210.00'	22°52'33"	83.84'	83.29'	N 63°12'09" W
C-22	210.00'	18°54'32"	69.31'	68.99'	N 42°18'37" W
C-23	210.00'	19°05'55"	70.00'	69.68'	N 23°18'23" W
C-24	210.00'	13°38'31"	50.00'	49.88'	N 6°56'10" W
C-25	20.00'	90°00'00"	31.42'	28.28'	N 45°06'55" W



Prospector Subdivision No. 1
Sheet 1 of 2

