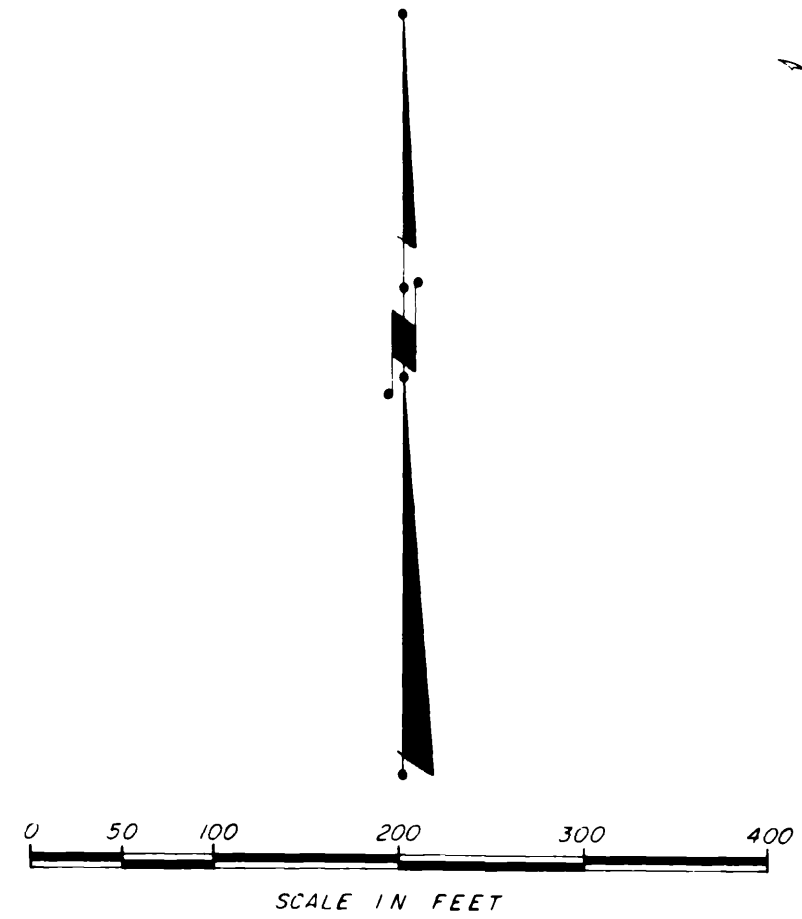
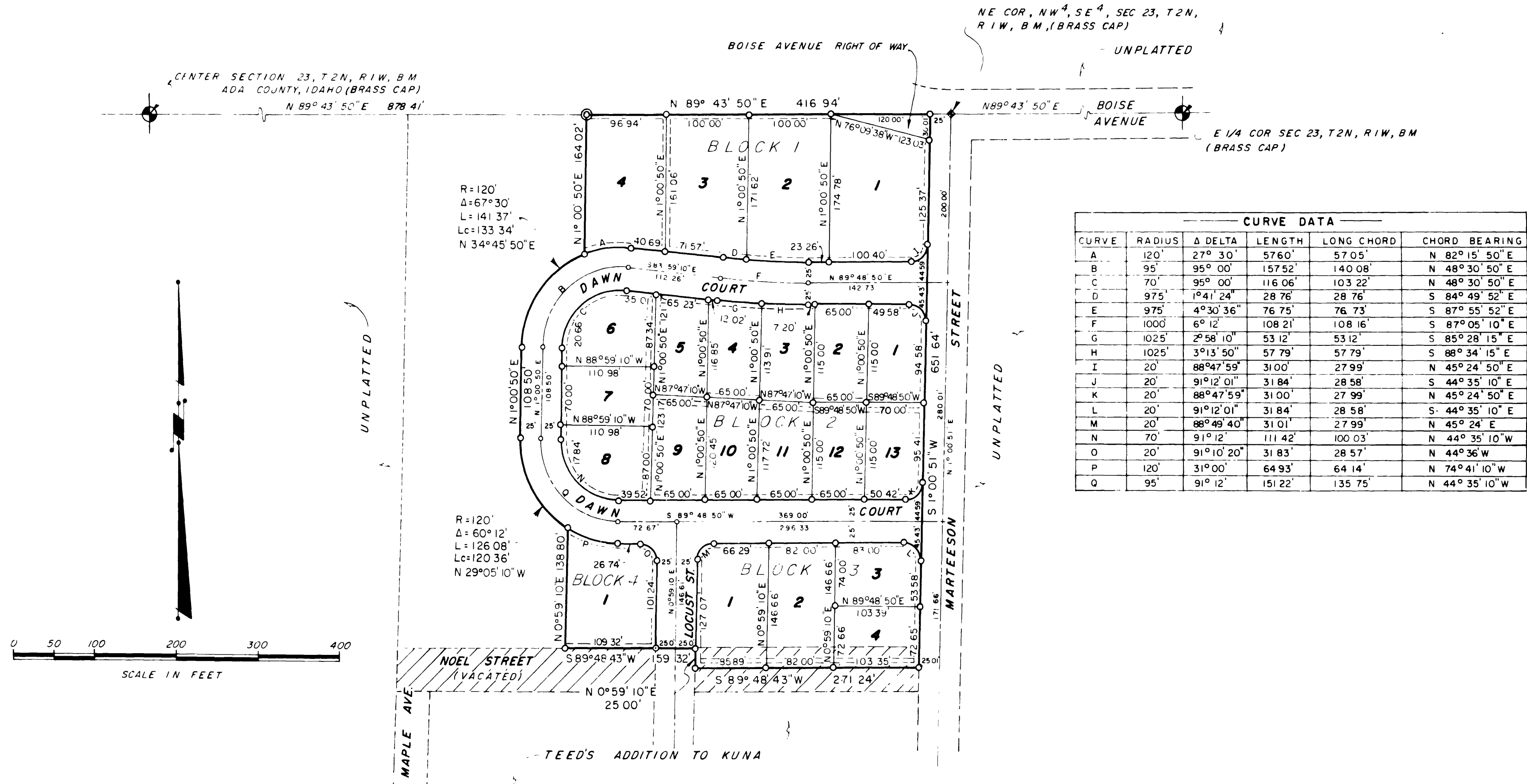


MARTEESON MANOR

A RESUBDIVISION OF A PORTION OF "TEED'S ADDITION TO KUNA" IN THE E²NW⁴SE⁴ OF SECTION 23, T. 2 N., R. 1 W., B.M., ADA COUNTY, IDAHO
TUDOR ENGINEERING COMPANY-1975



LEGEND

- 5/8" x 30" STEEL PINS SET AT ANGLE POINTS ON BOUNDARY ALL OTHER POINTS ARE 1/2" x 24" STEEL PINS
- INITIAL POINT
- 13 LOT NUMBER
- UTILITY, IRRIGATION, OR DRAINAGE EASEMENT
- TELEPHONE EASEMENT

BUILDING SETBACKS

- FRONT ——— 25 FEET
- SIDE ——— 5 FEET PER STORY
- SIDE STREET ——— 20 FEET
- REAR ——— 25 FEET

RESTRICTIVE COVENANTS

INSTRUMENT NUMBER _____
BUILDING & OCCUPANCY SHALL CONFORM TO THE STANDARDS AS ESTABLISHED BY THE RESTRICTIVE COVENANTS FILED IN BOOK NO _____, AT PAGE NO _____, OF MISCELLANEOUS RECORDS, ADA COUNTY, IDAHO