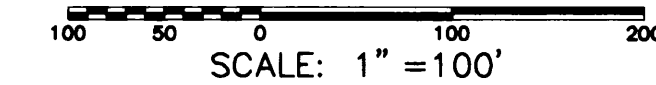
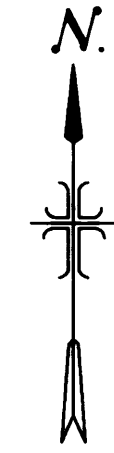


PLAT SHOWING DUSTY LAYNE SUBDIVISION

A PORTION OF THE NE 1/4, NE 1/4, SECTION 35
TOWNSHIP 2 NORTH, RANGE 1 WEST,
BOISE MERIDIAN
ADA COUNTY, IDAHO
1993

LEGEND

- Found Brass Cap Monument
- Found 5/8" Iron Pin
- Set 5/8" x 30" Iron Pin with Plastic Cap
- Set PK Nail
- Boundary Line
- Lot Line
- W.C. Witness Corner
- Utility, Drainage and Irrigation Easement Line
- Survey Line

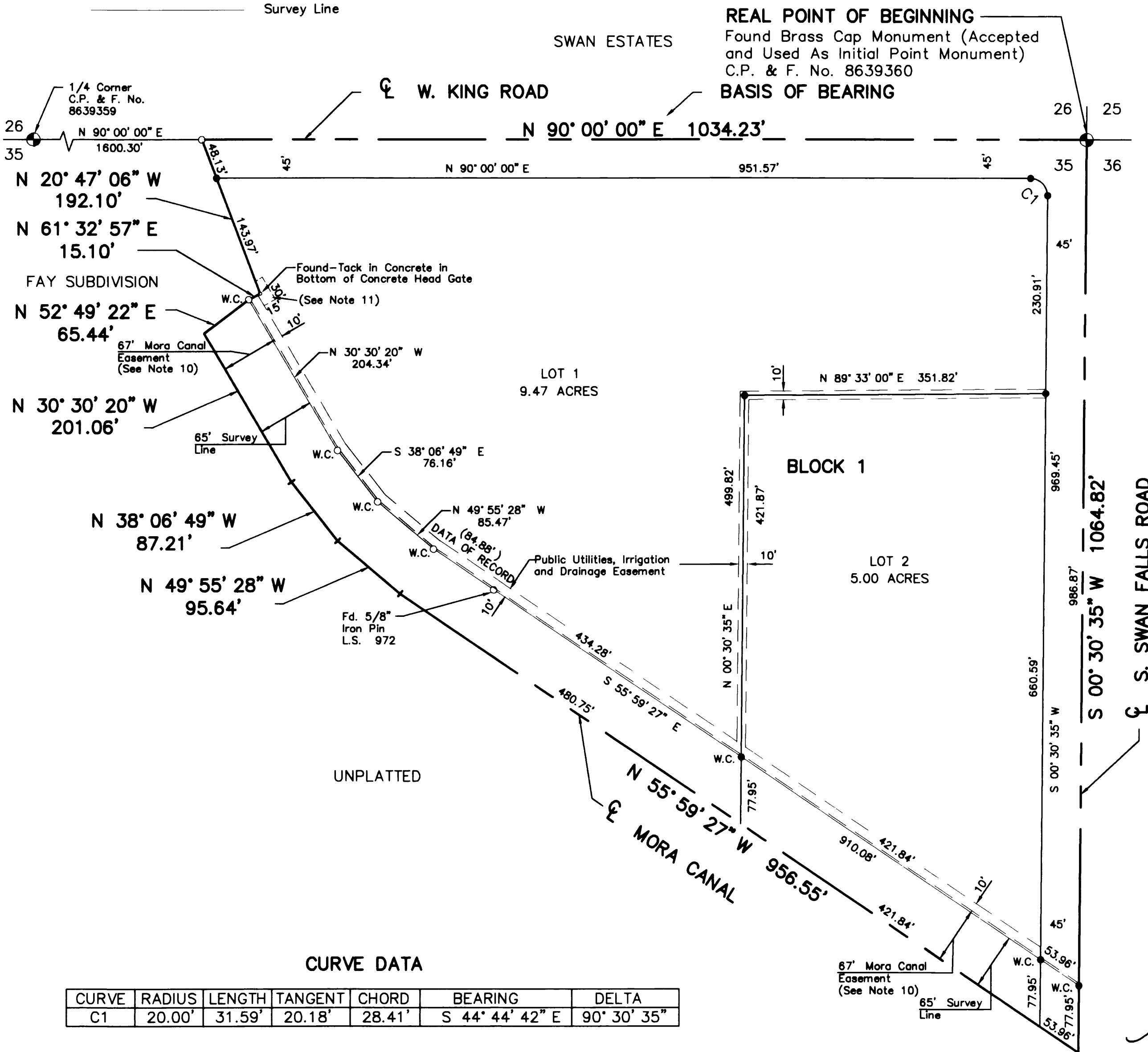


SURVEYOR'S NOTE:

Reference is hereby made to Record of Survey No. 932 filed for record as Instrument No. 8641497 on July 22, 1986; and Record of Survey No. 1897 filed for record as Instrument No. 9139370 on July 19, 1991 in the records of the Ada County Recorders Office, Ada County, Idaho.

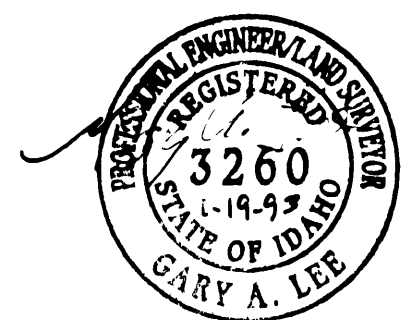
NOTES

1. Building setbacks and dimensional standards in this subdivision shall comply with the applicable zoning regulations of Ada County Idaho.
2. Any re-subdivision of this plat shall comply with the applicable zoning regulations in effect at the time of the re-subdivision.
3. A 10-foot wide permanent Public Utilities, Drainage and Irrigation Easement is designated along public road rights-of-way and exterior subdivision boundaries, unless shown otherwise. A 10-foot wide permanent Public Utilities, Drainage and Irrigation Easement is designated to be centered on interior lot lines.
4. Irrigation water has been provided for each lot within this subdivision through existing irrigation ditches and the developer shall comply with Idaho Code Section 31-3805.
5. Lot owners shall construct vehicle turn around areas on each individual lot.
6. Lots shall not be reduced in size without prior approval from the Central District Health Department.
7. No additional domestic water supplies shall be installed beyond the water systems approved in the sanitary restriction release.
8. Reference is hereby made to a public health letter on file with the Ada County Recorders office regarding additional restrictions.
9. Location of access roads or driveways to Lots 1 and 2 of this Subdivision shall be approved by the Ada County Highway District prior to construction.
10. A 67 foot wide irrigation easement is hereby designated for the benefit of the United States Government Bureau of Reclamation and the Boise/Kuna Irrigation District.
11. A 15 foot by 30 foot wide irrigation easement centered on the existing irrigation take out structure is hereby designated for the benefit of the United States Government Bureau of Reclamation and the Boise/Kuna Irrigation District.



CURVE DATA

CURVE	RADIUS	LENGTH	TANGENT	CHORD	BEARING	DELTA
C1	20.00'	31.59'	20.18'	28.41'	S 44° 44' 42" E	90° 30' 35"



J-U-B ENGINEERS, INC.
Engineers Surveyors Planners
Boise, Idaho

