

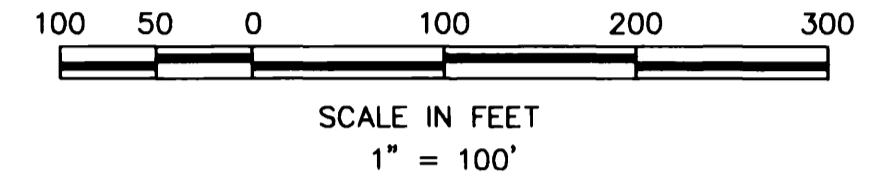
NOTES

- 1. BUILDING SETBACKS SHALL BE IN ACCORDANCE WITH THE ZONING ORDINANCE AT THE TIME OF ISSUANCE OF THE BUILDING PERMIT.
- 2. ANY RESUBDIVISION OF THIS PLAT SHALL CONFORM TO THE APPLICABLE ZONING REGULATIONS IN EFFECT AT THE TIME OF RESUBDIVISION.
- 3. SUBDIVIDER WILL COMPLY WITH THE DISCLOSURE REQUIREMENTS OF SECTION 31-3805 OF THE IDAHO CODE.
- 4. ALL LOTS ARE HEREBY DESIGNATED AS HAVING A PERMANENT PUBLIC UTILITIES, DRAINAGE, AND IRRIGATION EASEMENT OVER THE TWELVE (12) FEET ADJACENT TO ANY STREET THAT IS DEDICATED TO THE USE OF THE PUBLIC. THIS EASEMENT SHALL NOT PRECLUDE THE CONSTRUCTION OF HARD-SURFACED DRIVEWAYS AND WALKWAYS TO EACH LOT.

- 5. A TWELVE (12) FOOT PERMANENT PUBLIC UTILITIES, DRAINAGE, AND IRRIGATION EASEMENT IS HEREBY RESERVED LYING SIX (6) FEET ON BOTH SIDES OF EACH COMMON INTERIOR LOT LINE.
- 6. ALL OF THE LOTS IN BLOCK 2 ARE HEREBY DESIGNATED AS HAVING A PERMANENT PUBLIC UTILITIES, DRAINAGE AND IRRIGATION EASEMENT OVER THE TWELVE (12) FEET ADJACENT TO THE SOUTHERLY EXTERIOR BOUNDARY AND TWELVE (12) FEET ADJACENT TO INDIAN CREEK.
- 7. A SIX (6) FOOT PERMANENT PUBLIC UTILITIES, DRAINAGE, AND IRRIGATION EASEMENT IS HEREBY RESERVED ADJACENT TO THE REMAINDER OF THE EXTERIOR BOUNDARY.
- 8. LOTS 17 AND 21, OF BLOCK 2 AND LOT 15, OF BLOCK 5 ARE HEREBY DESIGNATED AS BEING COVERED WITH A BLANKET PERMANENT PUBLIC UTILITIES, IRRIGATION AND A.C.H.D. STORM DRAINAGE EASEMENT, AND ARE TO BE OWNED AND MAINTAINED BY THE HOMEOWNERS ASSOCIATION.

PLAT OF
DISCOVERY CREEK SUBDIVISION No. 2
 A PORTION OF THE SE 1/4, SECTION 22,
 T.2N., R.1W., B.M.,
 KUNA, ADA COUNTY, IDAHO
 1995

E 1/4 CORNER
 SECTION 22
 CP&F # 8337498



LEGEND

- BOUNDARY LINE
- CENTERLINE
- ⊕ FOUND BRASS CAP
- ⊙ FOUND 5/8" IRON PIN W/ CAP
- SET 5/8" X 30" IRON PIN W/CAP
- SET 1/2" X 24" IRON PIN W/CAP

LINE TABLE

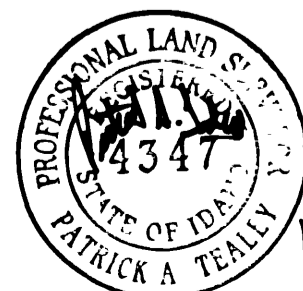
LINE	DIRECTION	DISTANCE
L1	N 00°05'47" E	4.18'
L2	S 00°05'47" W	4.29'
L3	S 48°51'45" E	25.00'
L4	S 00°05'47" W	4.41'
L5	N 59°33'25" W	22.50'

CURVE DATA

CURVE	RADIUS	LENGTH	DELTA	BEARING	CHORD
C-1	275.00'	20.02'	04°10'14"	S 50°08'53" E	20.01'
C-2	40.00'	76.62'	109°44'55"	N 54°58'15" E	65.43'
C-3	45.00'	70.69'	90°00'00"	N 25°09'18" W	63.64'
C-4	315.00'	98.53'	17°55'18"	N 61°11'39" W	98.13'
C-5	65.00'	124.51'	109°44'55"	N 54°58'15" E	106.33'
C-6	70.00'	16.96'	13°52'52"	N 12°54'16" E	16.92'
C-7	30.00'	46.75'	89°16'36"	N 24°47'36" W	42.16'
C-8	340.00'	83.74'	14°06'43"	N 62°22'33" W	83.53'
C-9	340.00'	18.32'	03°05'12"	N 53°46'36" W	18.31'
C-10	20.00'	30.24'	86°37'45"	N 84°27'08" E	27.44'
C-11	20.00'	25.62'	73°23'54"	N 04°26'18" E	23.90'
C-12	50.00'	13.24'	15°10'23"	N 24°40'28" W	13.20'
C-13	50.00'	77.53'	88°50'49"	N 27°20'08" E	70.00'
C-14	50.00'	56.00'	64°10'03"	S 76°09'26" E	53.12'
C-15	50.00'	22.68'	25°59'28"	S 31°04'40" E	22.49'
C-16	20.00'	36.17'	103°36'26"	S 10°39'58" E	31.44'
C-17	290.00'	38.90'	07°41'07"	S 66°18'44" E	38.87'
C-18	90.00'	28.12'	17°54'16"	S 09°02'55" W	28.01'
C-19	20.00'	11.85'	33°56'53"	S 01°01'36" W	11.68'
C-20	50.00'	11.98'	13°43'45"	S 09°04'57" E	11.95'
C-21	50.00'	35.83'	41°03'18"	S 18°18'34" W	35.07'
C-22	50.00'	31.69'	36°18'34"	S 56°59'30" W	31.16'
C-23	50.00'	44.28'	50°44'32"	N 79°28'57" W	42.85'
C-24	20.00'	11.85'	33°56'53"	N 71°05'07" W	11.68'
C-25	90.00'	28.12'	17°54'16"	N 79°06'26" W	28.01'
C-26	30.00'	47.12'	90°00'00"	S 64°50'42" W	42.43'
C-27	20.00'	31.42'	90°00'00"	S 25°09'18" E	28.28'
C-28	70.00'	93.00'	76°07'08"	N 32°05'44" W	86.31'
C-29	50.00'	39.27'	45°00'05"	S 04°25'06" W	38.27'
C-30	50.00'	12.41'	14°13'07"	N 34°01'42" E	12.38'
C-31	65.00'	62.25'	54°52'28"	N 82°24'28" E	59.90'
C-32	65.00'	62.25'	54°52'28"	N 27°32'01" E	59.90'

30' x 40' PERMANENT UNDERGROUND SEWER PUMP STATION EASEMENT SEE INSTRUMENT No. 95067480

INITIAL POINT
 FOUND 5/8" IRON PIN,
 SET BRASS CAP IN 6" X 24" CONC.



TEALEY'S LAND SURVEYING

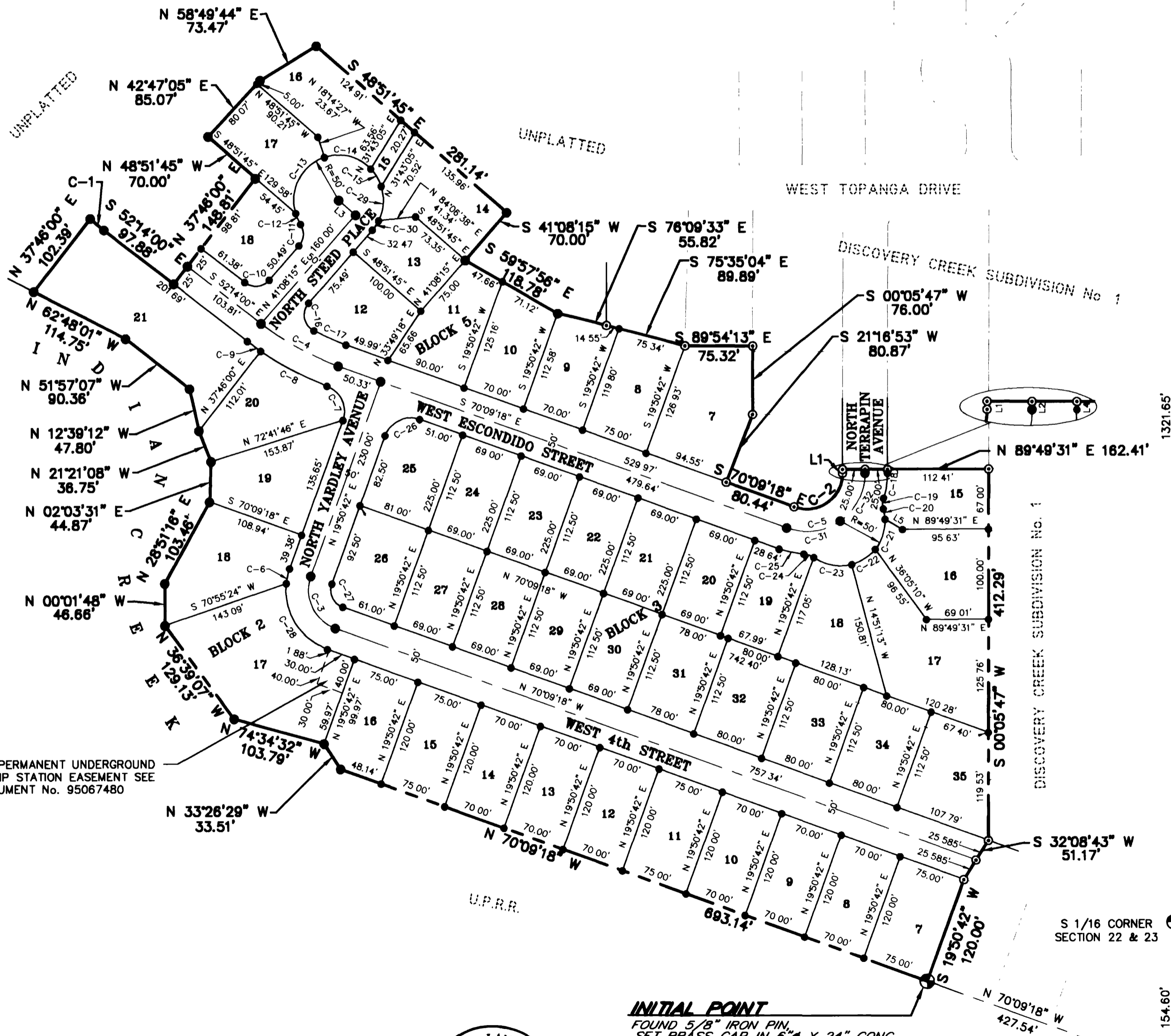
100 S. 4th ST. • BOISE, IDAHO

208-385-0636

Project No. 1226-2

Sheet 1 of 2

SE CORNER
 SECTION 22
 CP&F # 9262682



22 23

1321.65'

2643.15'

1321.65'

S 00°05'47" W

S 1/16 CORNER SECTION 22 & 23

154.60'

1321.50'

1166.90'

22 23

27 28

