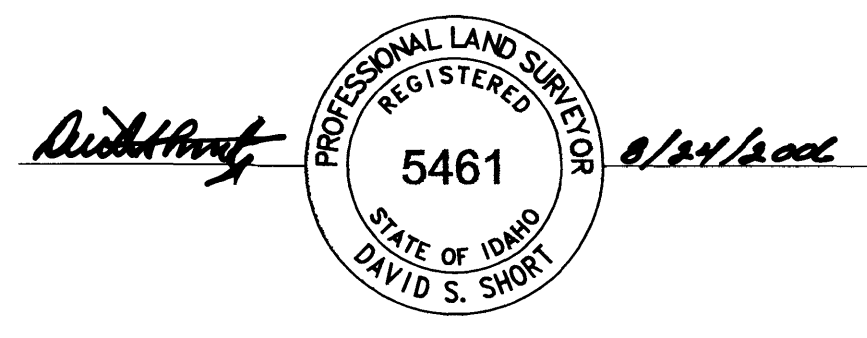
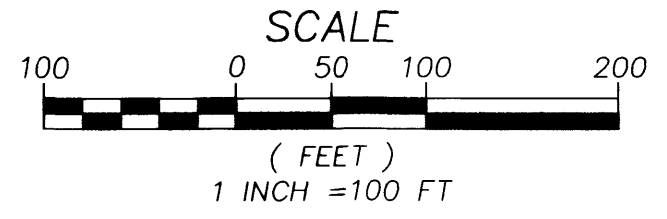
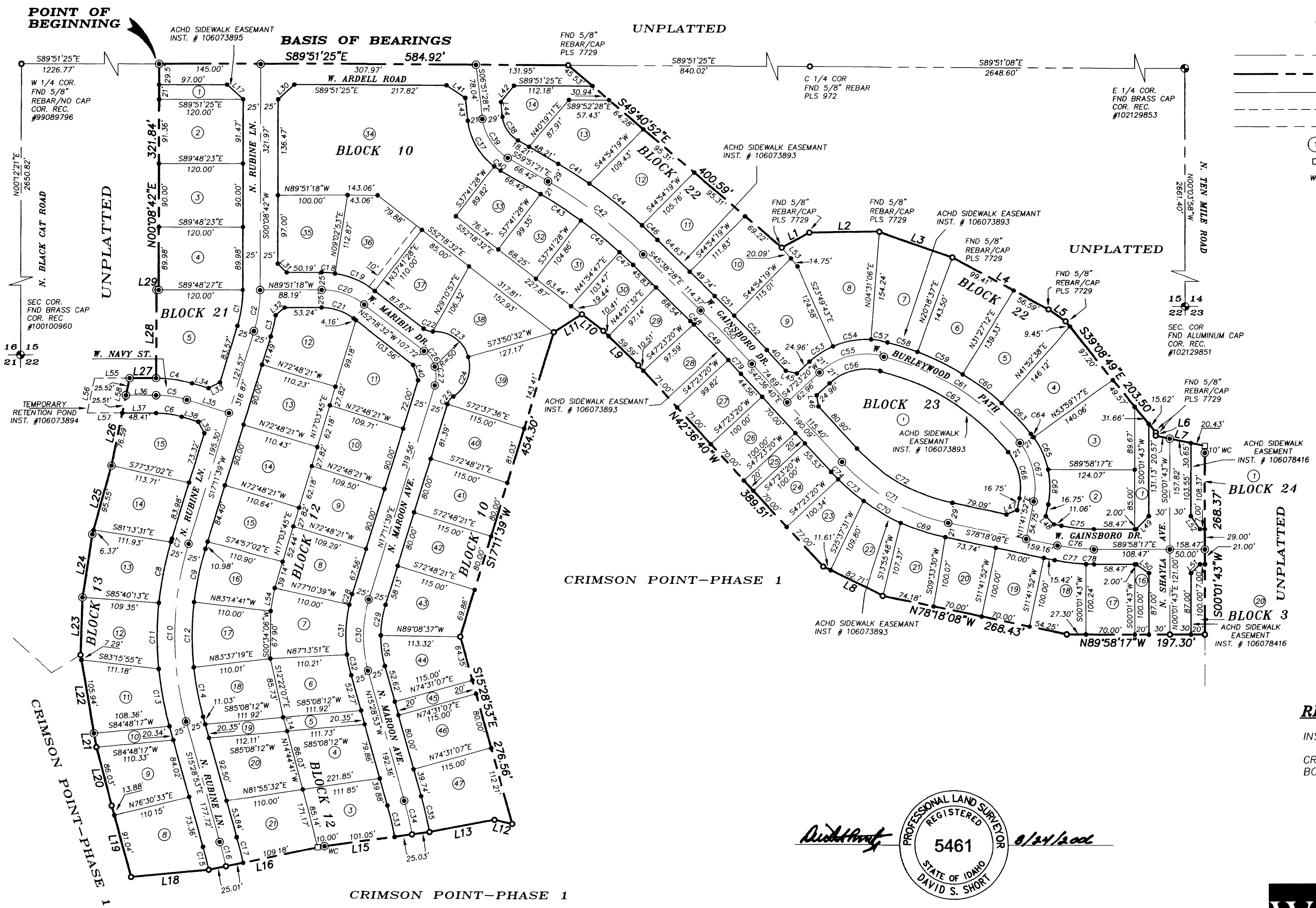


CRIMSON POINT SUBDIVISION-PHASE 4

A PARCEL OF LAND LOCATED IN THE S 1/2 OF SECTION 15, T.2N., R.1W., B.M.,
CITY OF KUNA, ADA COUNTY, IDAHO
2006

LEGEND

- FOUND BRASS/ALUM CAP AS NOTED
- FOUND 5/8" IRON PIN PLS 5461 OR AS NOTED
- SET 1/2" X 24" REBAR
- ⊙ SET 5/8" X 30" REBAR WITH PLASTIC CAP #5461
- CENTERLINE
- SUBDIVISION BOUNDARY LINE
- LOT LINE
- - - EASEMENT LINE
- - - SECTION LINE
- ① LOT NUMBER
- CALCULATED POINT, NOT SET
- WC WITNESS CORNER



REFERENCE DATA

INST. #103066194 (ROS 6130)
CRIMSON POINT SUBDIVISION - PHASE 1
BOOK 90 PAGE 10621

W&H PACIFIC
3130 S. Owyhee St.
Boise, Idaho 83705-4768
(208)342-5400
(208)342-5353 Fax
whpacific.com

Planners • Engineers • Surveyors • Landscape Architects

