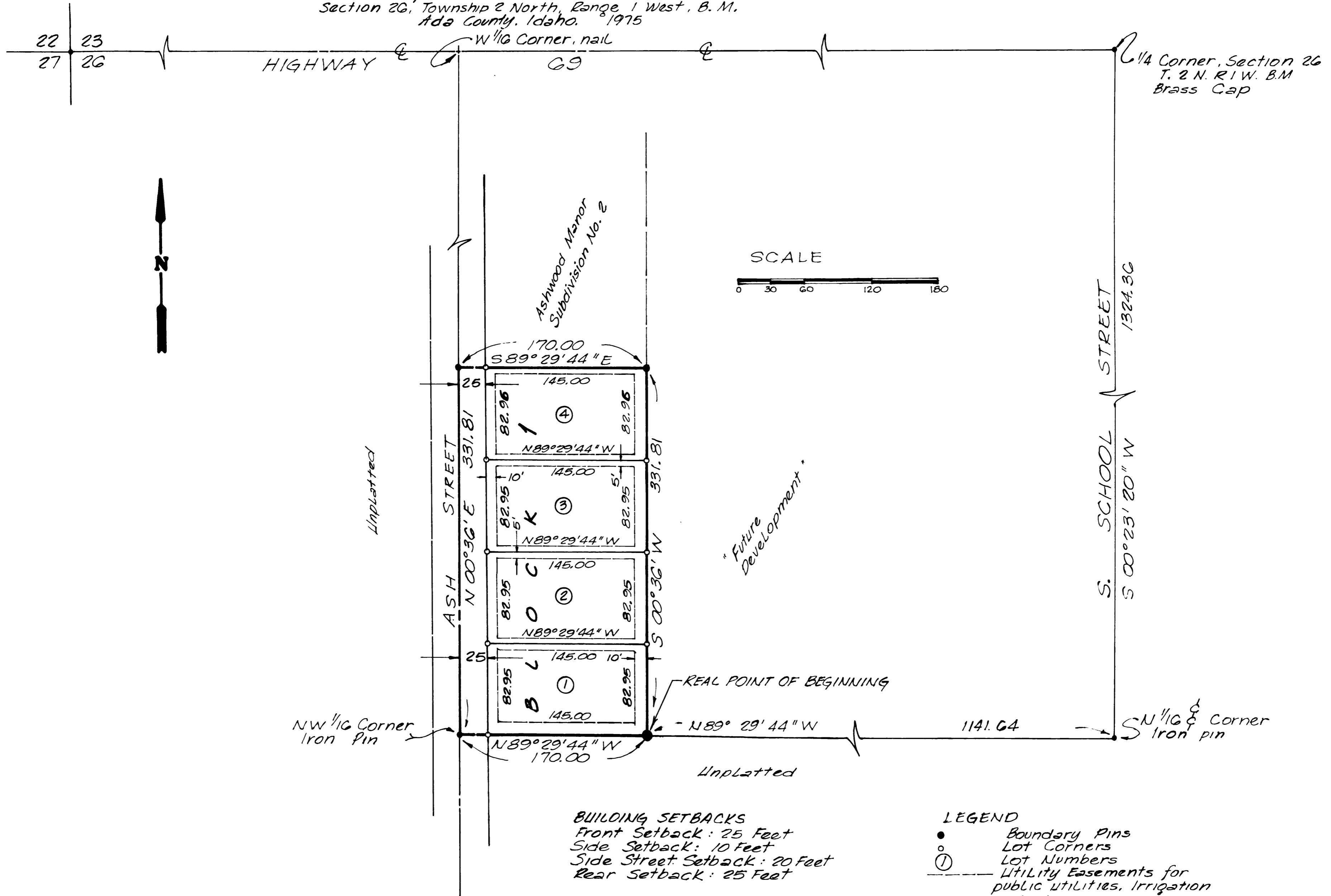


ASHWOOD MANOR SUBDIVISION NO. 1.

A Portion of the Northeast Quarter, Northwest Quarter,
Section 26, Township 2 North, Range 1 West, B. M.
Ada County, Idaho. 1975



NW 1/4 Corner
Iron Pin

Unplatted

"Future
Development"

Unplatted

BUILDING SETBACKS
Front Setback: 25 Feet
Side Setback: 10 Feet
Side Street Setback: 20 Feet
Rear Setback: 25 Feet

LEGEND
● Boundary Pins
○ Lot Corners
① Lot Numbers
--- Utility Easements for
public utilities, irrigation
and drainage.
● 2" Iron pipe

