

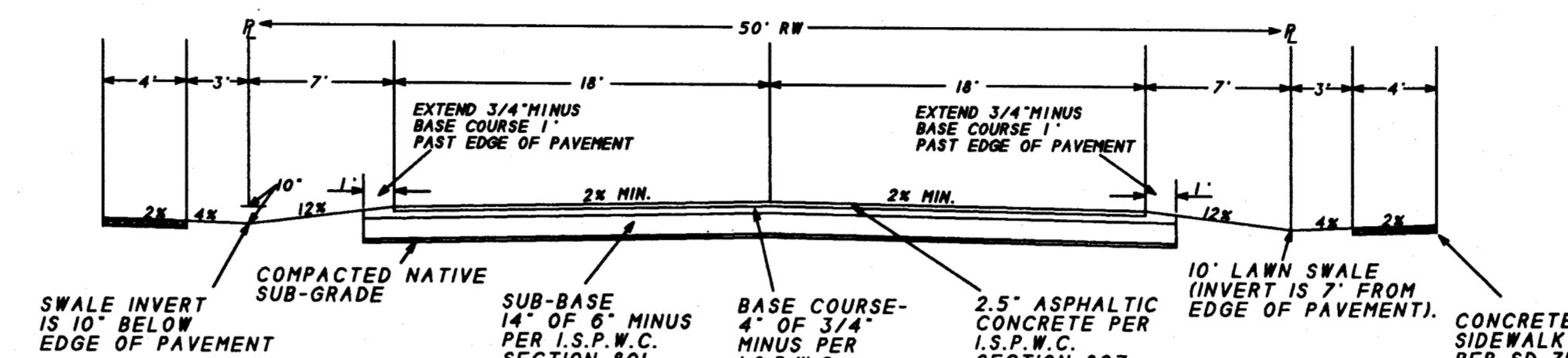
SPICE WOOD NO. 3 SUBDIVISION

CONSTRUCTION PLANS

KUNA, IDAHO
1996

ROAD CONSTRUCTION NOTES

- All materials, appurtenances and construction shall conform with the latest edition of the Idaho Standards for Public Works Construction (ISPWC).
- Contractor(s) shall attend a pre-construction conference at a place and time determined prior to the commencement of construction.
- Contractor(s) shall obtain a construction permit from the Ada County Highway District at least 24 hours prior to commencing construction of any of the improvements shown hereon.
- Contractor(s) shall have all buried utilities located prior to commencing construction.
- See the final plat of "Spice Wood No. 3 Subdivision" for more Complete survey information. All lot dimensions shown on these plans are either tangent or chord distances.
- Construction inspection shall be performed by the Ada County Highway District.
- The street Contractor shall set sewer manhole covers, frames and grade rings to finish grade and - and place concrete collars after asphalt pavement has been completed. Collars shall conform to ISPWC Dwg. No. SD-508B.



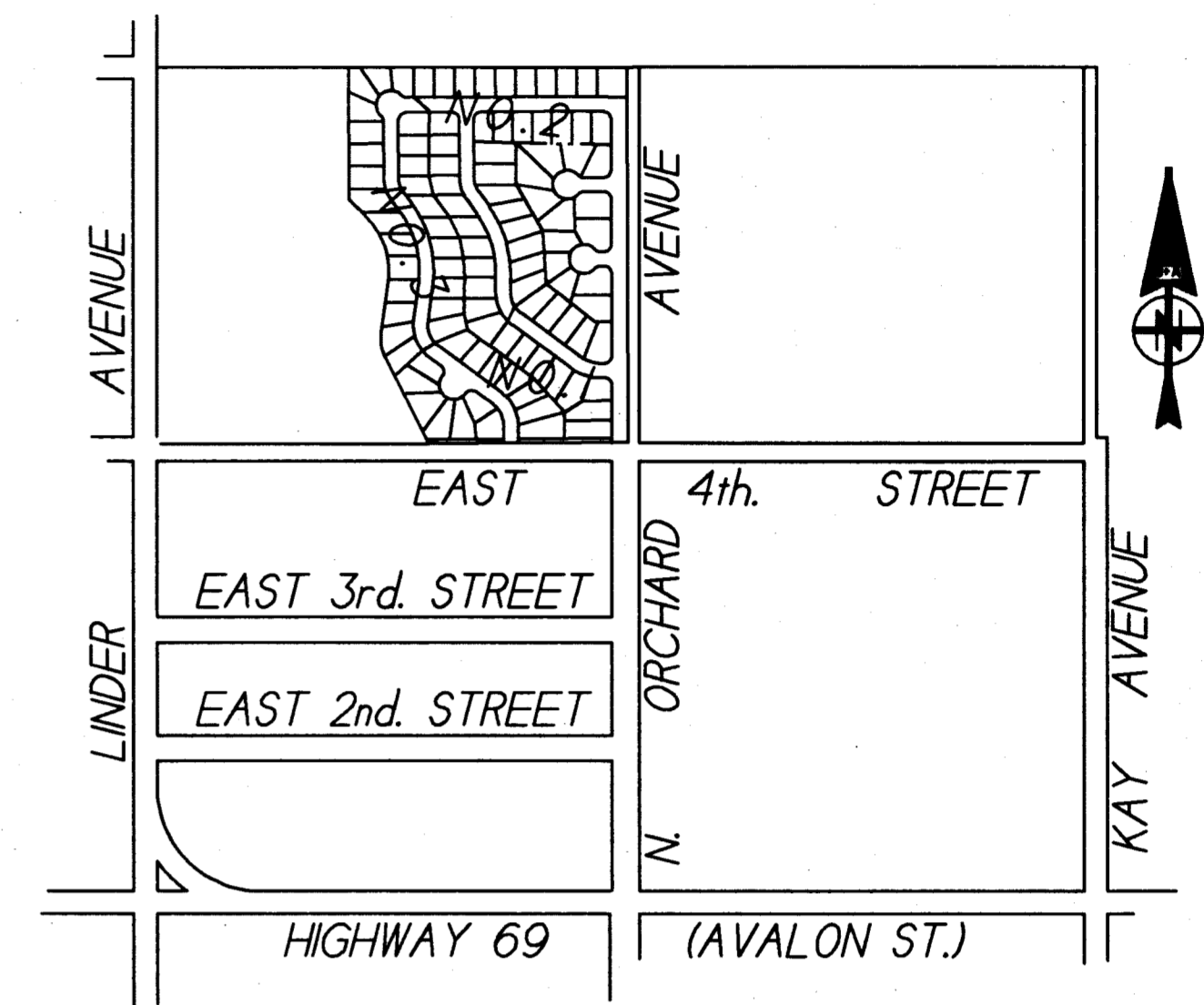
NOTES

DRIVEWAYS TO CROSS SWALE WITH A 6 INCH DEEP GUTTER CONSTRUCTED 7 FEET FROM EDGE OF PAVEMENT

EACH DRIVEWAY CROSSING SHALL BE CONSTRUCTED WITH A 4" BY 4" BY 3" PIT RUN GRAVEL SUMP LOCATED UPSTREAM AND ADJACENT TO THE DRIVEWAY COVER SUMP WITH 4 OZ/SY NON-WOVEN FILTER FABRIC SUMP SHALL BE CONSTRUCTED WHEN DRIVEWAY IS CONSTRUCTED.

NOTE: ALL DIMENSIONS ARE AS SHOWN EXCEPT WHERE OTHERWISE DIMENSIONED

STREET CROSS-SECTION
N.T.S.



- NOTE**
- VICINITY MAP IS NOT TO SCALE
 - SEE SHEET 3 FOR MORE LOCATION INFORMATION

LOCATION MAP

WATER AND SANITARY SEWER NOTES

- All water and sewer construction shall conform to the latest edition of the Idaho Standards for Public Works Construction (ISPWC), Uniform Plumbing Code, and laws of the State of Idaho.
- All sewer pipe and fittings shall be Poly-vinyl-chloride (PVC) conforming to the provisions of ASTM D-3034, SDR 35 for sizes 4-inch through 15-inch. Services shall be constructed in accordance with ISPWC Dwg. No. SD-511A, Type "A".
- All installed sewer lines shall be tested for leakage in accordance with Section 506 of the ISPWC Specifications following installation of all utilities and prior to paving. The testing must be observed by a representative of the City. Deflection tests and/or television inspection may be required at the option of the City.
- All water mains shall be Poly-vinyl-chloride (PVC) conforming to the provisions of AWWA C-900, Class 150, SDR 18, or Class 150 Cement Mortar Lined Ductile Iron conforming to AWWA C-104 and AWWA C-151. All fittings shall be mechanical joint ductile iron conforming to AWWA C-110. All plastic pipe shall be installed with a #12 direct burial tracer wire placed along the north and east side of the main. The tracer wire shall be accessible at all valve boxes and shall be extended along the outside of the lower portion of the valve box and along the inside of the upper portion. Minimum burial depths for all water mains shall be 4-feet from finish grade to the top of pipe. Thrust blocks shall conform to ISPWC Dwg. No. SD-403.
- All main line water valves shall be resilient-seated gate valves conforming to AWWA C-509. All water valves shall be furnished with a standard cast iron 5-1/4 inch diameter adjustable valve box. The cast iron cover shall be marked with the word "WATER" as an integral part of the cover.
- All Fire hydrants shall be dry barrel fire hydrants conforming to AWWA C-502. Hydrants shall have a 5-foot setting; minimum 5-1/4 inch valve opening; 150 psi working pressure; one 4-1/2 inch diameter National Standard pumper nozzle; and two 2-1/2 inch diameter National Standard Thread fire hose nozzles. The valve operator shall open left (counter-clockwise). The hydrant shall be equipped with a breakable traffic flange; a drain that automatically opens when the hydrant is closed; and a 6-inch mechanical joint connection. The hydrant shall be equipped with a 6-inch flanged by mechanical joint resilient-seat gate valve with cast iron valve box attached directly to the main line tee. Hydrants shall be installed such that the breakable traffic flange is set 2-inches minimum, 6-inches maximum above the back of the sidewalk or finish grade as applicable.
- Individual water services shall be installed for each connection. The water service shall consist of a pipe saddle with 1-inch corporation stop; 1-inch class 200, SDR 7.3 polyethylene pipe conforming to AWWA C-901; 18-inch tall 5/8" x 3/4" copper meter setter with lockable shutoff valve; and 18-inch diameter by 30-inch tall insulated meter box as manufactured by "Mid-States Plastics, Inc.", or equal, with a cast iron frame and cover approved by the City. The cover shall be tapped with a 1-inch diameter hole. Water meters shall be furnished and installed by the City. Multiple taps in the same pipe joint shall staggered and separated by a minimum of one foot. The centerline of the meter setter shall be located 18-inches below finish grade. Meters shall be placed 18-inches inside the property line and 18-inches away from the side lot line. A copped and marked 5-foot stub of water service line shall be extended into each lot from the meter box. Dual services off of one service line will not be allowed.

- All installed water lines shall be tested for leakage in accordance with Section 404 of the ISPWC Specifications following installation of all utilities and prior to paving. The testing must be observed by a representative of the City. All installed water lines shall be disinfected in accordance with Section 405 of the ISPWC Specifications and satisfactorily pass a bacteriological test conducted by the City prior to being put into service.
- All pipe, mains and services, shall be bedded with Type I bedding. In areas of rock excavation bedding shall be 6-inches below the pipe.
- The separation requirements as outlined in Section 406, Separations of Water Mains and Sewers, of the ISPWC Specifications shall apply to both mainlines and service lines. Where sewer mains and services do not conform to the separation requirements water class pipe is required.
- In areas where rock excavation is required all blasting for other utilities shall occur prior to installation of any sewer mains, water mains or service line crossings.
- When construction is satisfactorily completed, cleaned and tested the Developer shall request a final acceptance inspection by the City. The final acceptance inspection shall occur after all other utilities are installed. At a minimum, the final acceptance inspection shall consist of lamping all sewer mains, visually inspecting each manhole, and witnessing a final sewer air test and water pressure test conducted by the Contractor.
- Contractor(s) shall notify B. & A. Engineers, the Ada County Fire District and the City of Kuna Department of Public Works prior to commencement of construction of any improvements shown on these plans.
- Contractor(s) shall have all buried utilities located prior to commencing construction.
- Construction inspection shall be performed by B. & A. Engineers, the Ada County Highway District and / or the City of Kuna.
- All sewer services and temporary deadends shall be marked in accordance with ISPWC Dwg. No. SD-512. Said locations shall be visible and in place for final inspection.
- Sanitary sewer manholes shall be constructed in accordance with ISPWC Dwg. No. SD-501, SD-507, HD-508B and HD-509. Concrete rim collars shall be set by others. Where plastic pipe enters and leaves the manhole, approved boots or collars or approved equivalent shall be installed in the wall of the manhole to insure a watertight seal.

LEGEND

- SET 5/8"x30" IRON PIN WITH PLASTIC CAP - LS 4116
- SET 1/2"x24" IRON PIN WITH PLASTIC CAP - LS 4116
- WITNESS CORNER - SET 1/2"x24" IRON PIN 10" FROM LOT CORNER WITH PLASTIC CAP - LS 4116
- WITNESS CORNER - FOUND 5/8" IRON PIN 10" FROM LOT CORNER WITH PLASTIC CAP - LS 4116
- ★ REFERENCE MARK - SET 1/2"x24" IRON PIN WITH PLASTIC CAP - LS 4116
- ☆ REFERENCE MARK - FOUND 5/8" IRON PIN WITH PLASTIC CAP - LS4116
- ▽ FOUND 5/8" IRON PIN W / PLASTIC CAP LS 4116
- 7 LOT NUMBER
- 3 BLOCK NUMBER
- SUBDIVISION BOUNDARY LINE
- ROAD CENTER LINE
- LOT LINE
- 10' SETBACK LINE
- EDGE OF PAVEMENT LINE
- 6" W NEW WATER LINE (SIZE NOTED)
- 8" EW EXISTING WATER LINE (SIZE NOTED)
- CONSTRUCT NEW 8" SANITARY SEWER
- EXISTING 8" SANITARY SEWER
- FOUND 2"x36" IRON PIPE WITH 5/8"x30" IRON PIN INSIDE WITH PLASTIC CAP - LS 4116
- INSTALL STREET LAMP
- INSTALL FIRE HYDRANT
- INSTALL WATER SERVICE AND METER
- 2690.52 BACK OF WALK ELEVATION
- USE WATER CLASS AWWA C-900 CLASS 150, SDR 18 PVC PIPE FOR THIS SEWER SERVICE

BENCH MARK INFORMATION

PBM IS CHISELED SQUARE ON END OF SIDEWALK AT S.E. CORNER OF EAST 4th STREET AND NORTH ORCHARD AVENUE. EL.-2696.73

SANITARY SEWER & WATER ASBUILTS. DAC 1-22-97

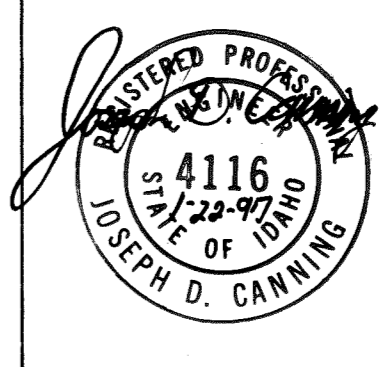
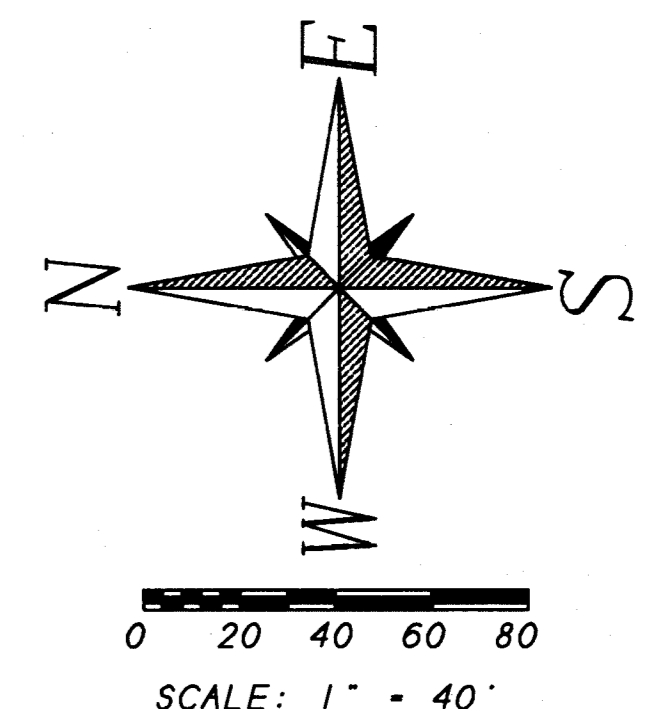
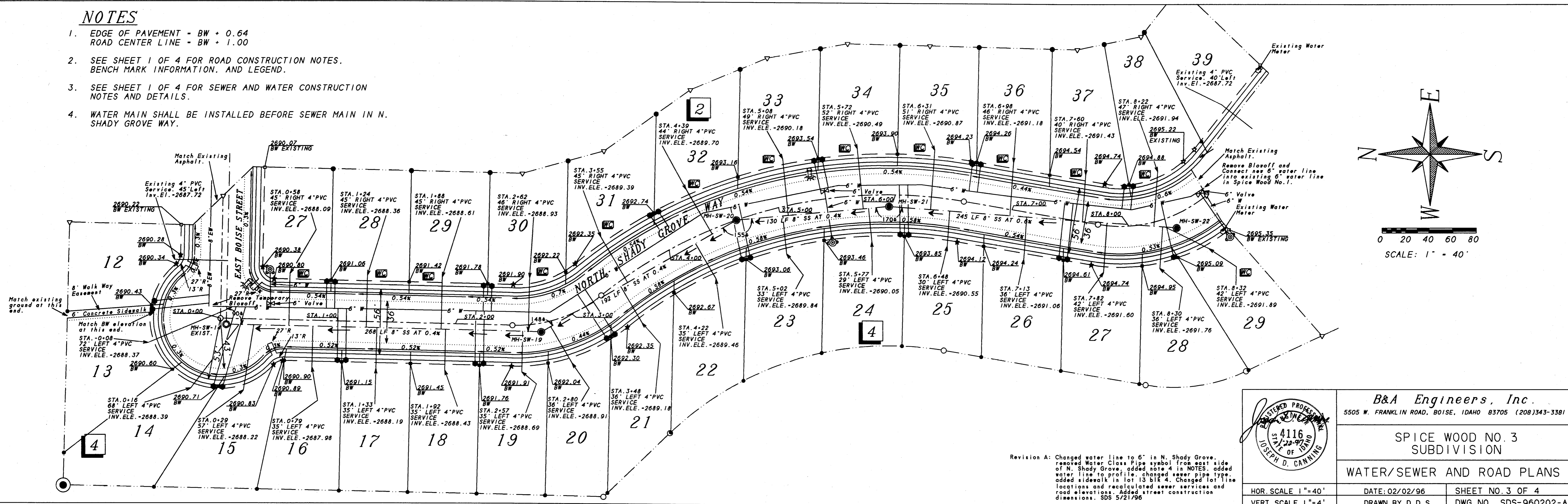
- Revision A: Changed construction notes per Kuna request. Clarified street cross-section and changed sub-base gravel depth. Rescaled legend to match plans.
- Revision B: Changed water and sanitary sewer construction note 7 per Kuna request.

	B&A Engineers, Inc. 5505 W. FRANKLIN RD., BOISE, IDAHO 83705 (208) 343-3381	
	SPICE WOOD NO. 3 SUBDIVISION	
TITLE SHEET		
HOR. SCALE 1"=60' VERT. SCALE N.A.	DATE: 02/02/96 DRAWN BY: D.D.S.	SHEET NO 1 OF 4 DWG. NO. SDS-960202-B

SPICEWOOD #3

NOTES

- EDGE OF PAVEMENT - BW + 0.64
ROAD CENTER LINE - BW + 1.00
- SEE SHEET 1 OF 4 FOR ROAD CONSTRUCTION NOTES, BENCH MARK INFORMATION, AND LEGEND.
- SEE SHEET 1 OF 4 FOR SEWER AND WATER CONSTRUCTION NOTES AND DETAILS.
- WATER MAIN SHALL BE INSTALLED BEFORE SEWER MAIN IN N. SHADY GROVE WAY.



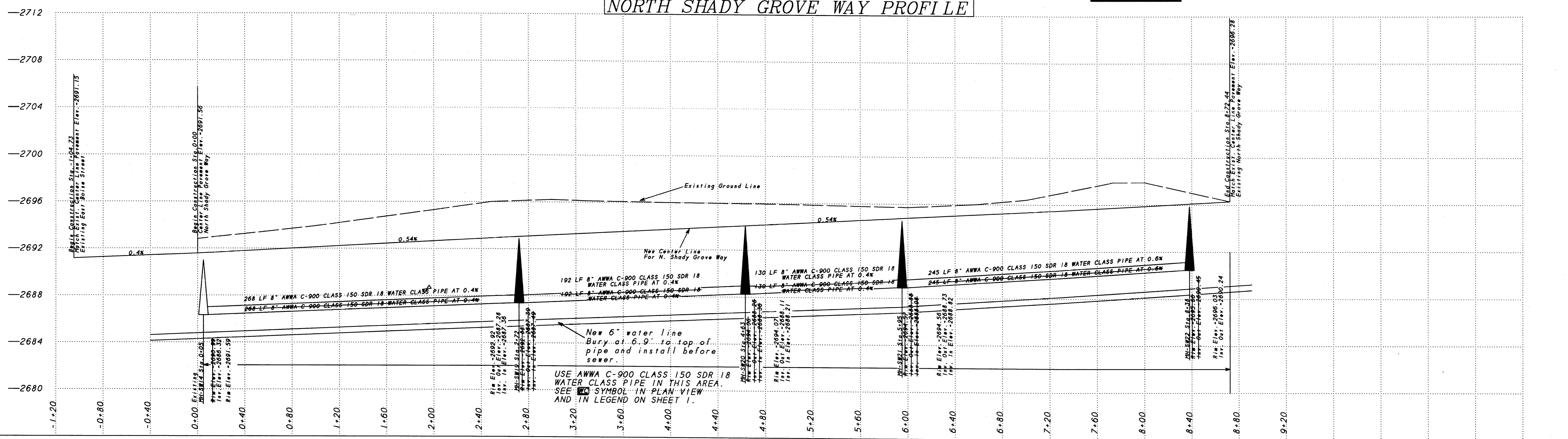
B&A Engineers, Inc.
5505 W. FRANKLIN ROAD, BOISE, IDAHO 83705 (208)343-3381

SPICE WOOD NO. 3
SUBDIVISION
WATER/SEWER AND ROAD PLANS

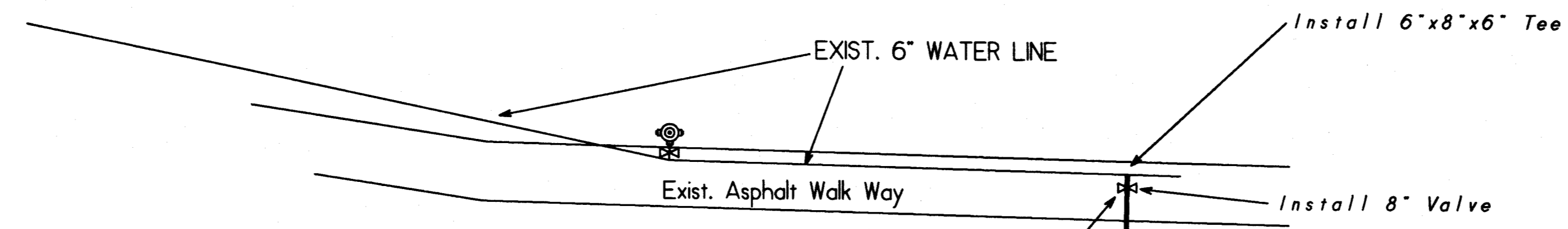
HOR. SCALE 1"=40'	DATE: 02/02/96	SHEET NO. 3 OF 4
VERT. SCALE 1"=4'	DRAWN BY D. D. S.	DWG. NO. SDS-960202-A

Revision A: Changed water line to 6" in N. Shady Grove, removed Water Class Pipe symbol from east side of N. Shady Grove, added note 4 in NOTES, added water line to profile, changed sewer pipe type, added sidewalk in lot 13 blk 4. Changed lot line locations and recalculated sewer services and road elevations. Added street construction dimensions. SDS 5/21/96

NORTH SHADY GROVE WAY PROFILE



EXIST. KUNA JR. HIGH BUILDING

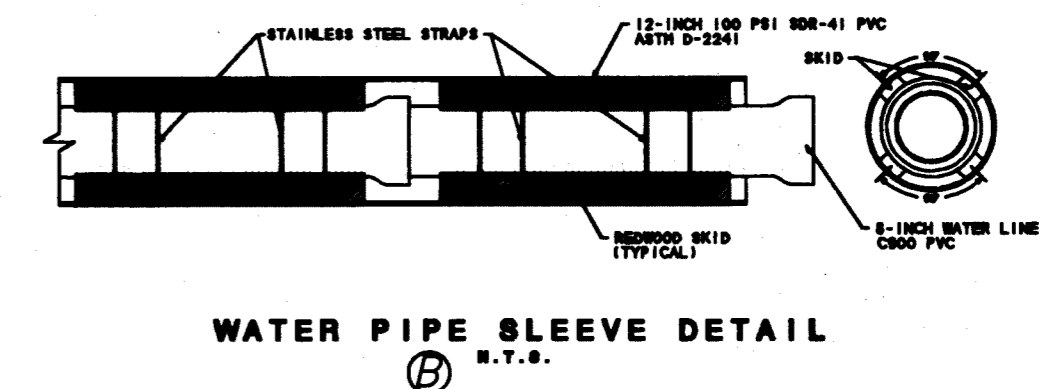
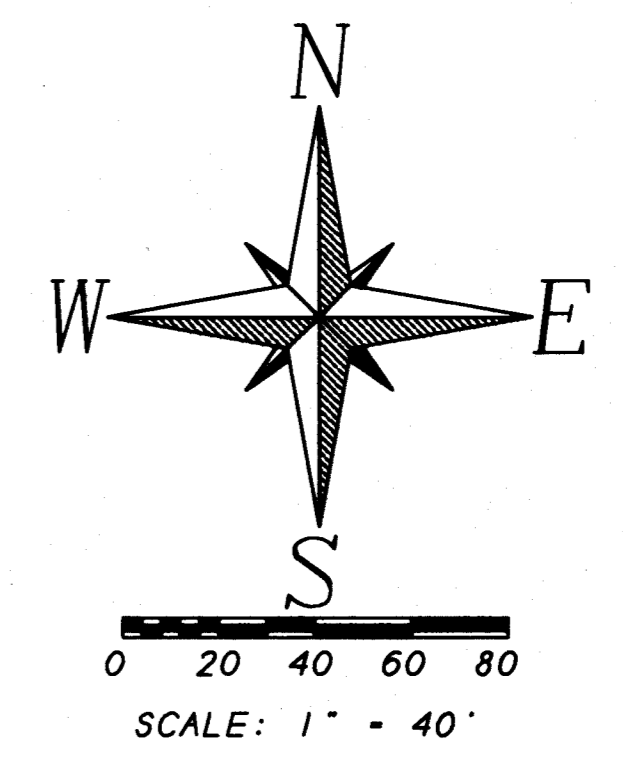
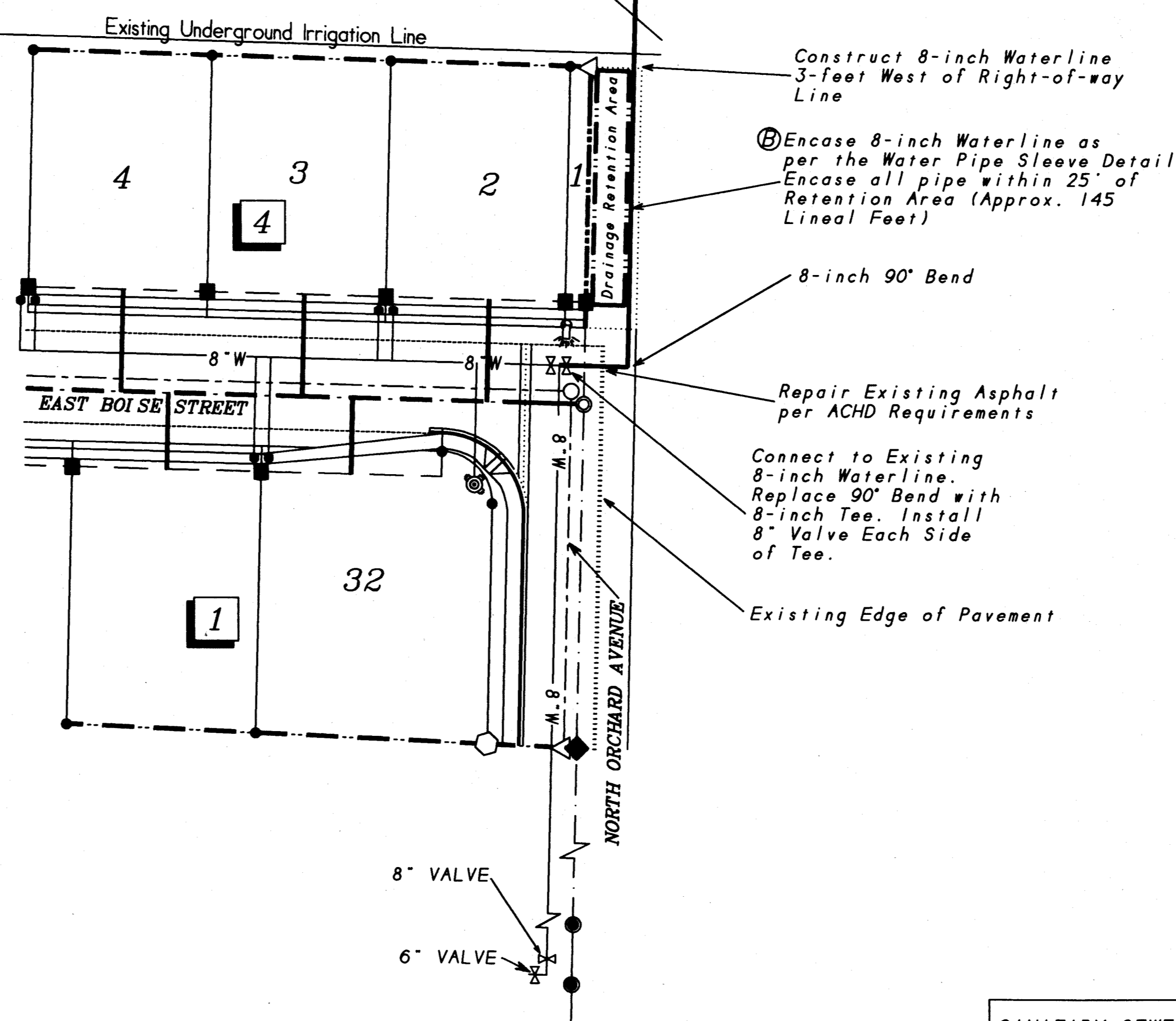


LEGEND

- SET 5/8"x30" IRON PIN WITH PLASTIC CAP - LS 4116
- SET 1/2"x24" IRON PIN WITH PLASTIC CAP - LS 4116
- WITNESS CORNER - SET 1/2"x24" IRON PIN 10" FROM LOT CORNER WITH PLASTIC CAP - LS 4116
- WITNESS CORNER - FOUND 1/2" IRON PIN 10" FROM LOT CORNER WITH PLASTIC CAP - LS 4116
- ★ REFERENCE MARK - SET 1/2"x24" IRON PIN WITH PLASTIC CAP - LS 4116
- ▽ FOUND 5/8" IRON PIN
- FOUND 1/2" IRON PIN
- 7 LOT NUMBER
- 3** BLOCK NUMBER

- SUBDIVISION BOUNDARY LINE
- ROAD CENTER LINE
- LOT LINE
- 10' SETBACK LINE
- EDGE OF PAVEMENT LINE
- W NEW WATER LINE (SIZE NOTED)
- W EXISTING WATER LINE (SIZE NOTED)
- NEW 8" SANITARY SEWER
- EXISTING 8" SANITARY SEWER
- ◆ FOUND 2"x36" IRON PIPE WITH 5/8"x30" IRON PIN INSIDE WITH PLASTIC CAP - LS 4116
- PEDESTRIAN RAMP PER ISPMC DWG. NO. SD-715
- STREET LAMP
- FIRE HYDRANT
- WATER SERVICE AND METER

SPICE WOOD NO. 2 SUBDIVISION



Revision B: Added Water Pipe Sleeve Detail and changed note on water line plan. 7/02/96 SDS
 Revision A: Rescaled and labeled waterline components. 5/21/96 JDC

SANITARY SEWER & WATER
 ASBUILTS. DAC 1-22-97

	B&A Engineers, Inc.	
	5505 W. FRANKLIN RD., BOISE, IDAHO 83642 (208)343-3381	
SPICE WOOD NO. 3 SUBDIVISION		
WATER/SEWER AND ROAD PLANS		
HOR. SCALE 1"=40'	DATE: 02/02/96	SHEET NO 4 OF 4
VERT. SCALE N.A.	DRAWN BY D.D.S.	DWG. NO. SDS-960202-B