

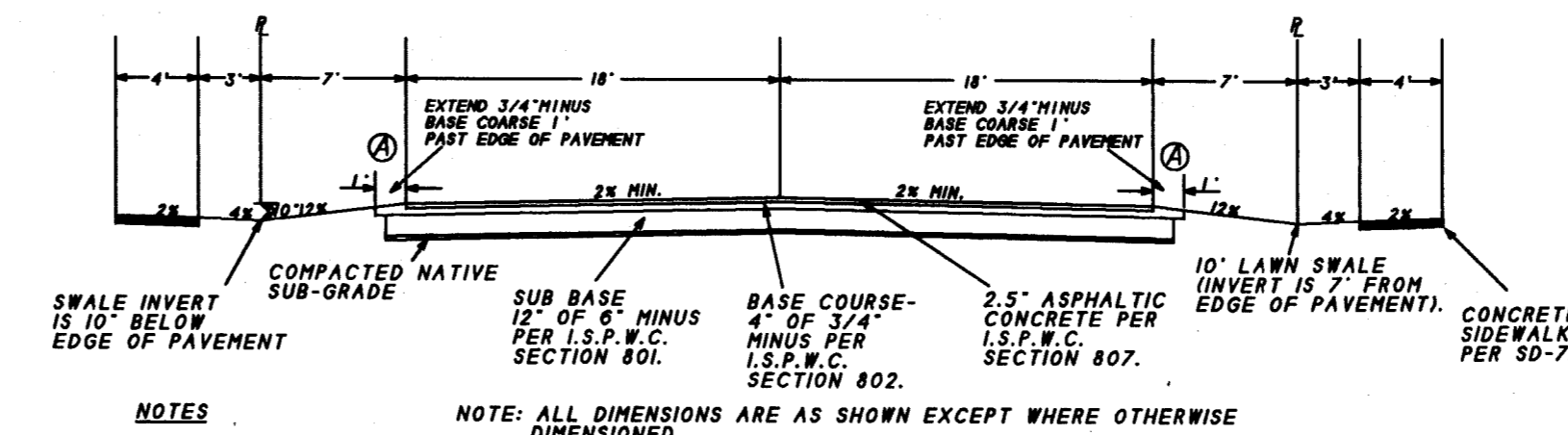
SPICEWOOD SUBDIVISION

NO. 2

CONSTRUCTION PLANS KUNA, IDAHO 1994

ROAD CONSTRUCTION NOTES

- ALL MATERIALS, APPURTENANCES AND CONSTRUCTION SHALL COMPLY WITH THE LATEST EDITION OF THE "IDAHO STANDARDS FOR PUBLIC WORKS CONSTRUCTION" (I.S.P.W.C.).
- CONTRACTOR(S) SHALL ATTEND A PRE-CONSTRUCTION CONFERENCE AT A PLACE AND TIME DETERMINED PRIOR TO THE COMMENCEMENT OF CONSTRUCTION.
- CONTRACTOR(S) SHALL OBTAIN A CONSTRUCTION PERMIT FROM THE ADA COUNTY HIGHWAY DISTRICT AT LEAST 24 HOURS PRIOR TO COMMENCING CONSTRUCTION OF ANY OF THE IMPROVEMENTS SHOWN ON THESE PLANS.
- CONTRACTOR(S) SHALL HAVE ALL BURIED UTILITIES LOCATED PRIOR TO COMMENCING WORK.
- SEE THE FINAL PLAT OF "SPICEWOOD SUBDIVISION NO. 2" FOR MORE COMPLETE SURVEY INFORMATION. ALL LOT DIMENSIONS SHOWN ON THESE PLANS ARE EITHER TANGENT OR CHORD DISTANCES.
- CONSTRUCTION INSPECTION SHALL BE PERFORMED BY THE ADA COUNTY HIGHWAY DISTRICT.
- STREET CONTRACTOR SHALL SET SEWER MANHOLE COVERS, FRAMES AND GRADE RINGS TO FINISH GRADE AND PLACE CONCRETE COLLARS AFTER ASPHALT PAVEMENT HAS BEEN COMPLETED. COLLARS SHALL CONFORM TO I.S.P.W.C. DWG. NO. SD-508B.
- PEDESTRIAN RAMPS SHALL BE BUILT IN ACCORDANCE WITH I.S.P.W.C. DWG. NO. SD-715.
- INTERSECTION VALLEY GUTTER SHALL BE BUILT IN ACCORDANCE WITH I.S.P.W.C. DWG. NO. SD-716.
- ADD CURB TERMINUS (SD-711) TO ALL END OF CURBS.
- CONSTRUCT TERMINUS BARRICADE (SD-908) AT ALL ENDS OF SIDEWALKS AND ROADWAYS.
- NO MAILBOX CLUSTERS ARE REQUIRED FOR THIS SUBDIVISION.

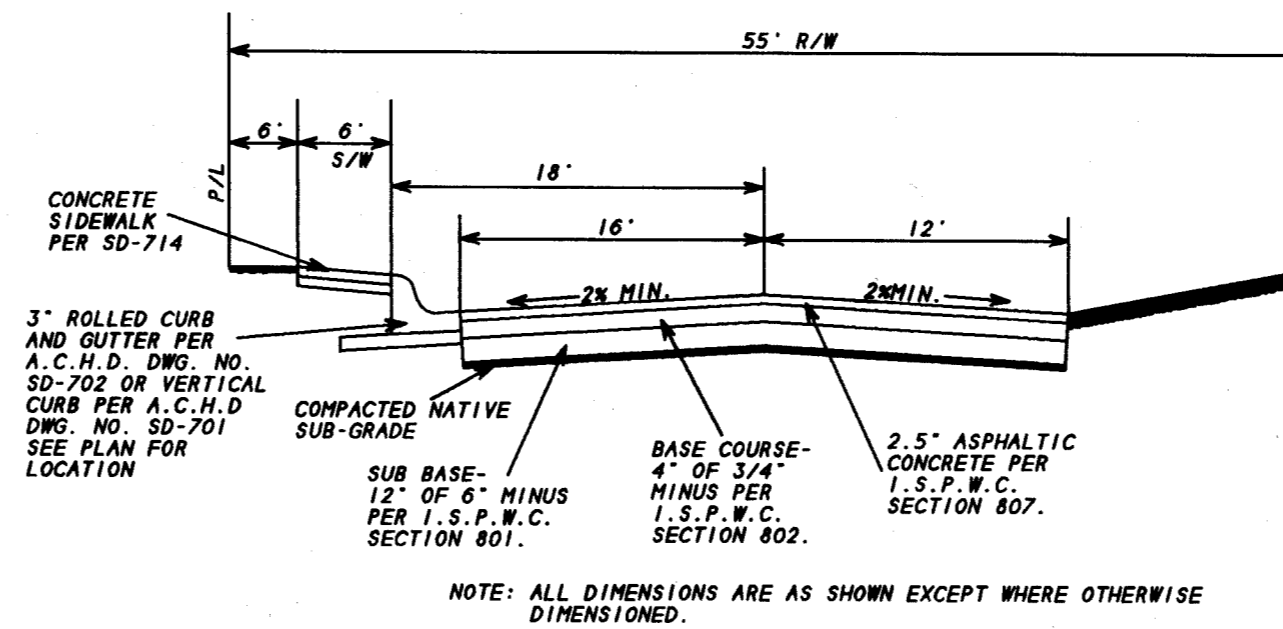


STREET CROSS-SECTION
N.T.S.

DRIVEWAYS TO CROSS SWALE WITH A 6 INCH DEEP GUTTER CONSTRUCTED 7 FEET FROM EDGE OF PAVEMENT
EACH DRIVEWAY CROSSING SHALL BE CONSTRUCTED WITH A 4' BY 4' BY 3' PIT RUN GRAVEL SUMP LOCATED UPSTREAM AND ADJACENT TO THE DRIVEWAY. COVER SUMP WITH 4 OZ/SY NON-WOVEN FILTER FABRIC SUMP SHALL BE CONSTRUCTED WHEN DRIVEWAY IS CONSTRUCTED.

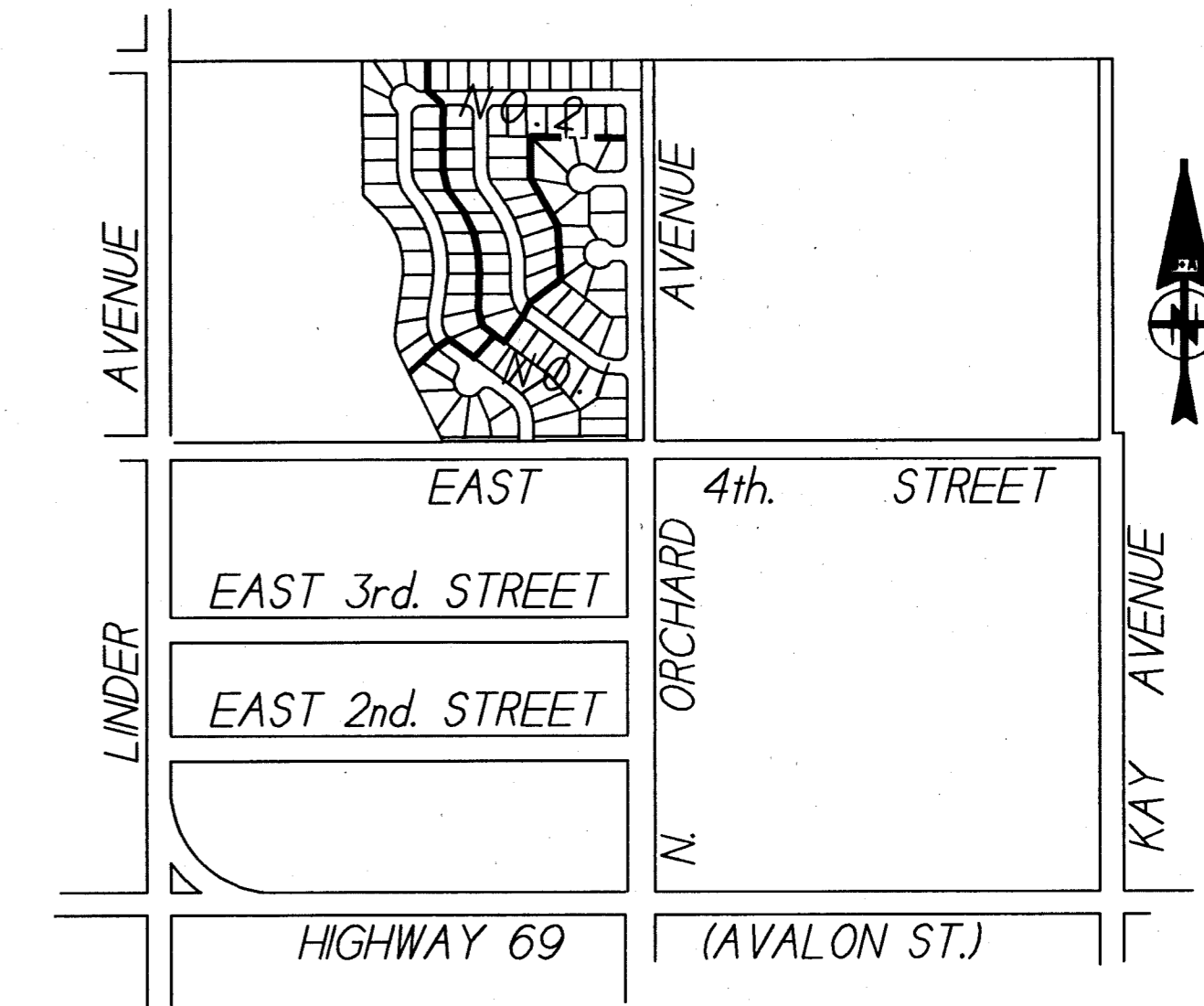
NOTE: ALL DIMENSIONS ARE AS SHOWN EXCEPT WHERE OTHERWISE DIMENSIONED

NOTE: ALL DIMENSIONS ARE AS SHOWN EXCEPT WHERE OTHERWISE DIMENSIONED



STREET CROSS-SECTION
TO BE USED IN NORTH
ORCHARD AVENUE
N.T.S.

NOTE: ALL DIMENSIONS ARE AS SHOWN EXCEPT WHERE OTHERWISE DIMENSIONED



- NOTE
- VICINITY MAP IS NOT TO SCALE
 - SEE SHEET 3 OF 6 FOR MORE LOCATION INFORMATION

LEGEND

- SET 5/8" x 30" IRON PIN WITH PLASTIC CAP - LS 4116
- SET 1/2" x 24" IRON PIN WITH PLASTIC CAP - LS 4116
- WITNESS CORNER - SET 1/2" x 24" IRON PIN 10' FROM LOT CORNER WITH PLASTIC CAP - LS 4116
- WITNESS CORNER - FOUND 1/2" IRON PIN 10' FROM LOT CORNER WITH PLASTIC CAP - LS 4116
- ★ REFERENCE MARK - SET 1/2" x 24" IRON PIN WITH PLASTIC CAP - LS 4116
- ▽ FOUND 5/8" IRON PIN
- FOUND 1/2" IRON PIN
- 7 LOT NUMBER
- 3 BLOCK NUMBER
- SUBDIVISION BOUNDARY LINE
- - - ROAD CENTER LINE
- LOT LINE
- - - 10' SET BACK LINE
- EDGE OF PAVEMENT LINE
- W NEW WATER LINE (SIZE NOTED)
- W EXISTING WATER LINE (SIZE NOTED)
- CONSTRUCT NEW 8" SAN. SEW
- EXISTING 8" SAN. SEW
- FOUND 2" x 36" IRON PIPE WITH 5/8" x 30" IRON PIN INSIDE WITH PLASTIC CAP - LS 4116
- CONSTRUCT PEDESTRIAN RAMP AS PER ISPWV DWG. NO. SD-715.
- ☼ INSTALL STREET LAMP
- ☼ INSTALL FIRE HYDRANT
- ☼ INSTALL WATER SERVICE AND METER
- BACK OF WALK ELEVATION
- ☼ USE WATER CLASS AWWA C-900 CLASS 150, SDR 18 PVC PIPE FOR THIS SEWER SERVICE

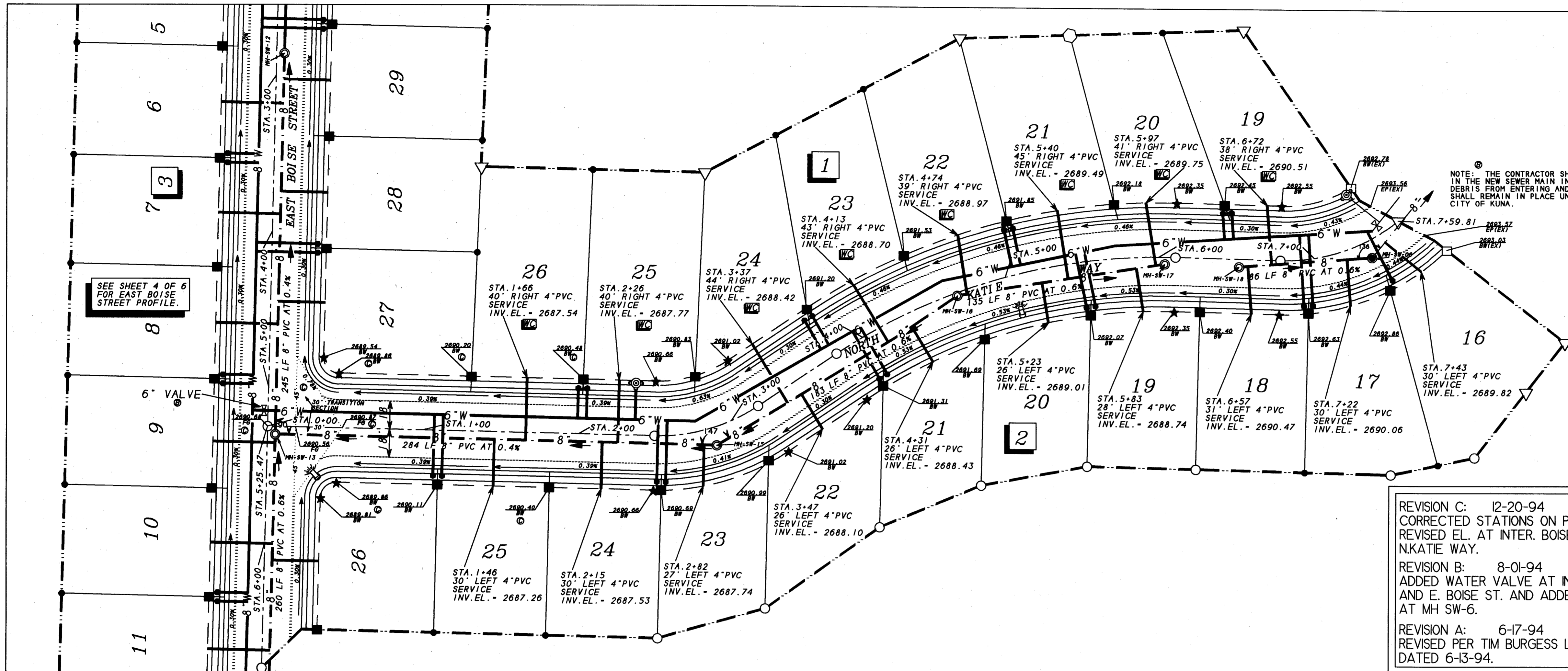
BENCH MARK INFORMATION

PBM IS CHISELED SQUARE ON END OF SIDEWALK AT S.E. CORNER OF EAST 4th STREET AND NORTH ORCHARD AVENUE. EL.-2696.73

REVISION ②: ADDED EXTENSION OF 3/4" MINUS BASE COURSE TO ROAD CROSS SECTION 12/3/94 BY S.D.S. AS PER A.C.H.D.

	B&A Engineers, Inc. 5505 W. FRANKLIN RD., BOISE, IDAHO 83705 (208) 343-3381	
	SPICEWOOD SUBDIVISION NO. 2	
	CONSTRUCTION PLANS	
HOR. SCALE 1"=60' VERT. SCALE N.A.	DATE: 05/20/94 DRAWN BY D.D.S.	SHEET NO. 1 OF 6 DWG. NO. SDS-940520-A

SPICEWOOD #2



- NOTES**
1. TO GET EDGE OF PAVEMENT ELEVATION ADD 0.64' TO BACK OF WALK ELEVATION.
 2. SEE SHEET 1 OF 6 FOR ROAD CONSTRUCTION NOTES, BENCH MARK INFORMATION, AND LEGEND.
 3. SEE SHEET 2 OF 6 FOR SEWER AND WATER CONSTRUCTION NOTES AND DETAILS.

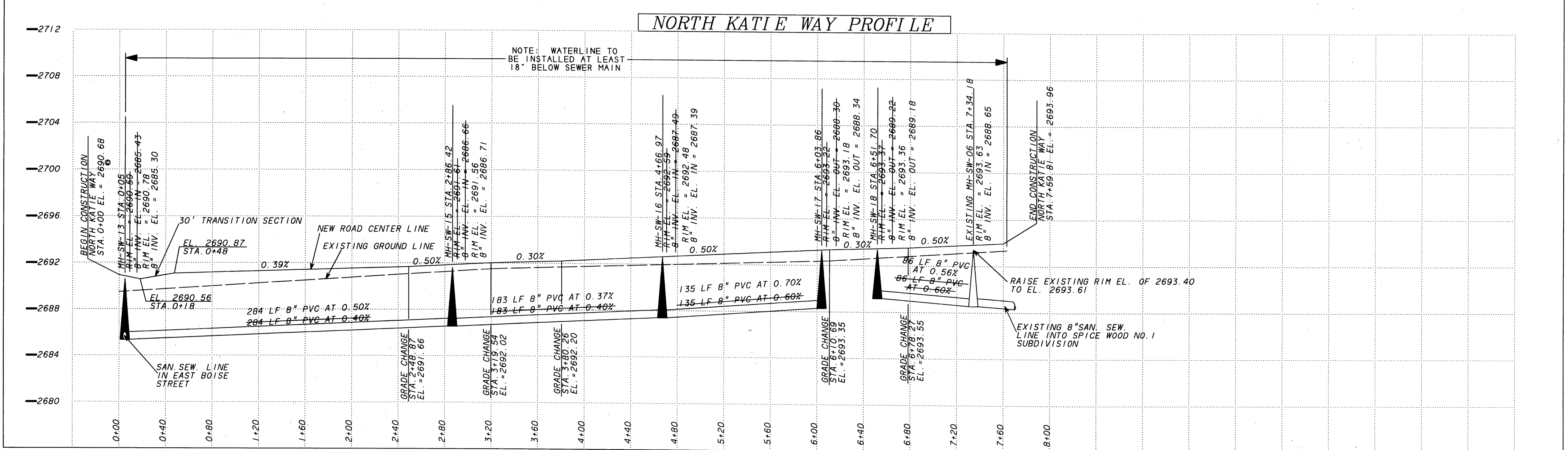
REVISION C: 12-20-94 SDS
CORRECTED STATIONS ON PROFILE.
REVISED EL. AT INTER. BOISE AND
NKATIE WAY.

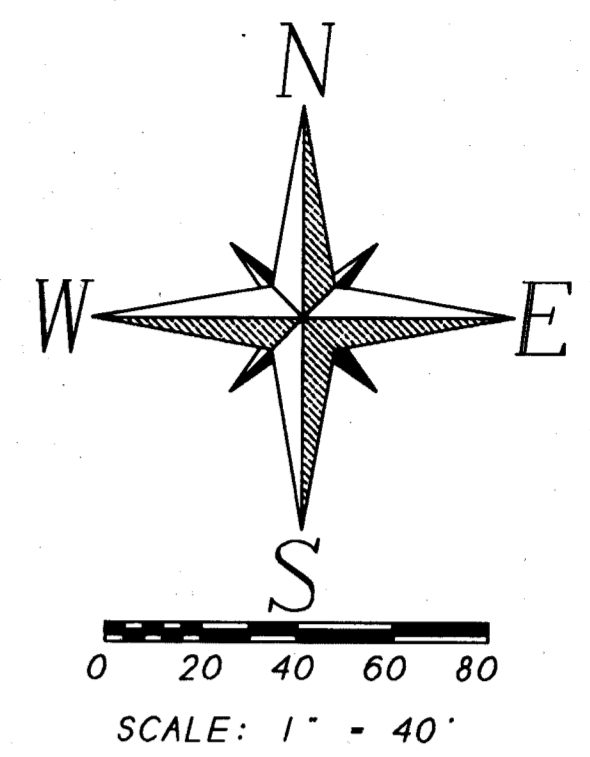
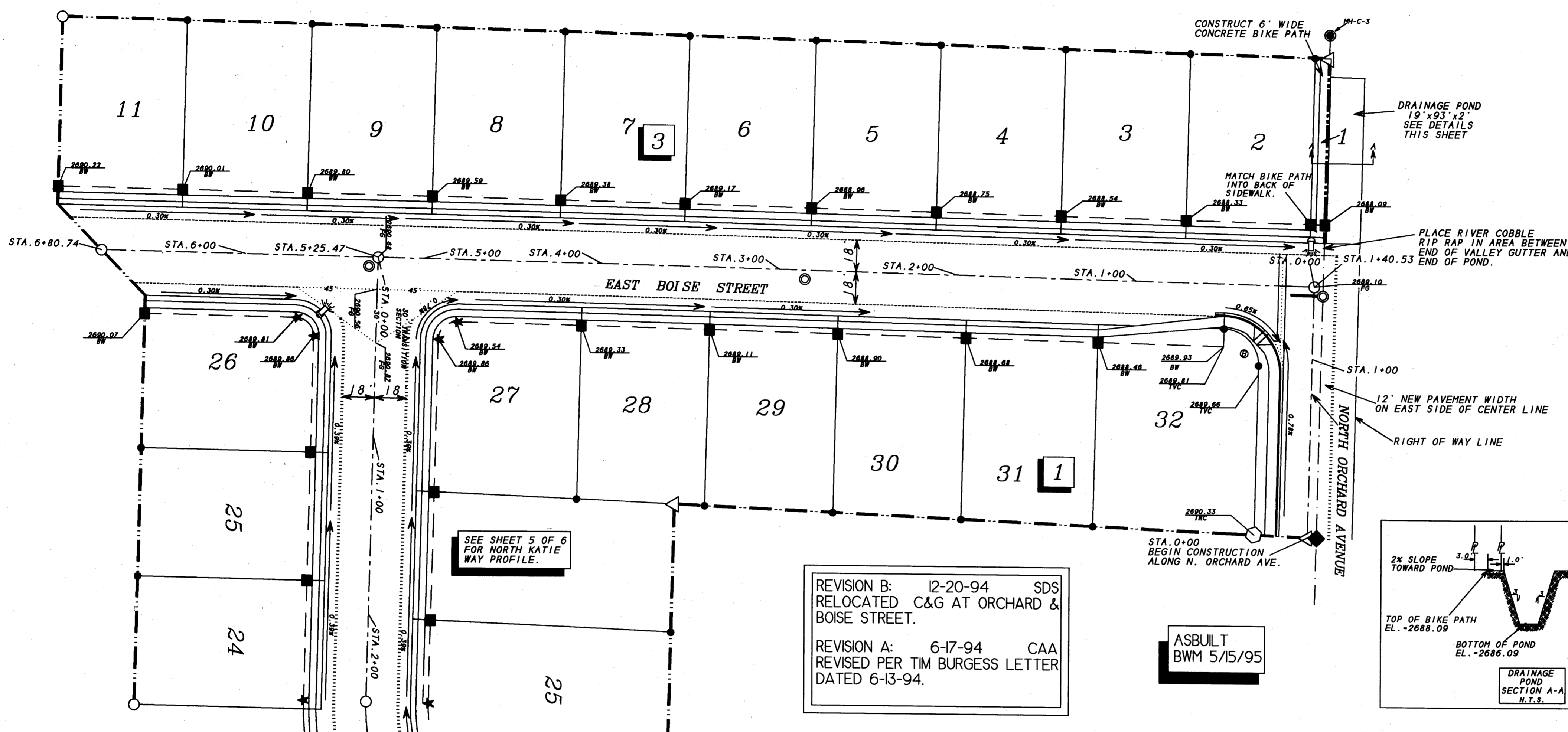
REVISION B: 8-01-94 SDS
ADDED WATER VALVE AT INT. N. KATIE
AND E. BOISE ST. AND ADDED NOTE
AT MH SW-6.

REVISION A: 6-17-94 CAA
REVISED PER TIM BURGESS LETTER
DATED 6-13-94.

Joseph D. Camins
5-15-95

B&A Engineers, Inc.		
5505 W. FRANKLIN ROAD, BOISE, IDAHO 83705 (208)343-3381		
SPICE WOOD NO. 2 SUBDIVISION		
WATER/SEWER AND ROAD PLANS		
HOR. SCALE 1"=40'	DATE: 05/20/94	SHEET NO. 5 OF 6
VERT. SCALE 1"=4'	DRAWN BY D.D.S.	DWG. NO. SDS-940520-C





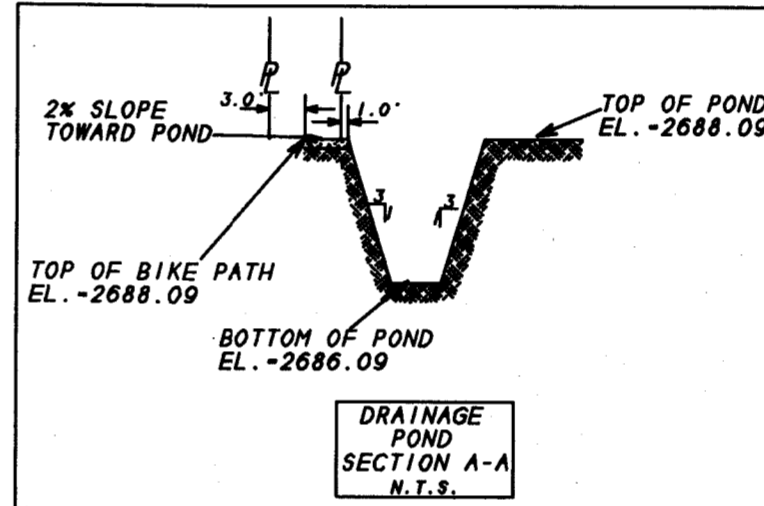
- NOTES**
- TO GET EDGE OF PAVEMENT ELEVATION ADD 0.64' TO BACK OF WALK ELEVATION.
 - SEE SHEET 1 OF 6 FOR ROAD CONSTRUCTION NOTES, BENCH MARK INFORMATION, AND LEGEND.
 - SEE SHEET 2 OF 6 FOR SEWER AND WATER CONSTRUCTION NOTES AND DETAILS.
 - DRAINAGE DESIGN DATA:
 C = 1
 I = 0.78
 A = 38,460 SQ. FT.
 D = 0.69 CFS
 TOTAL RETENTION - 2500 CU. FT.
 DISCHARGE RATE - 0.69 CFS

SEWER & WATER
ASBUILT
BWM 5/15/95

REVISION B: 12-20-94 SDS
RELOCATED C&G AT ORCHARD & BOISE STREET.

REVISION A: 6-17-94 CAA
REVISED PER TIM BURGESS LETTER DATED 6-13-94.

ASBUILT
BWM 5/15/95



Joseph D. Caming
5-15-95

B&A Engineers, Inc.	
5505 W. FRANKLIN ROAD, BOISE, IDAHO 83705 (208)343-3381	
SPICE WOOD NO. 2 SUBDIVISION	
DRAINAGE PLAN AND DETAIL	
HOR. SCALE 1"=40'	DATE: 05/20/94
VERT. SCALE 1"=4'	DRAWN BY D.D.S.
SHEET NO. 6 OF 6 DWG. NO. SDS-940520-B	

EAST BOISE STREET PROFILE

NORTH ORCHARD AVENUE PROFILE

