

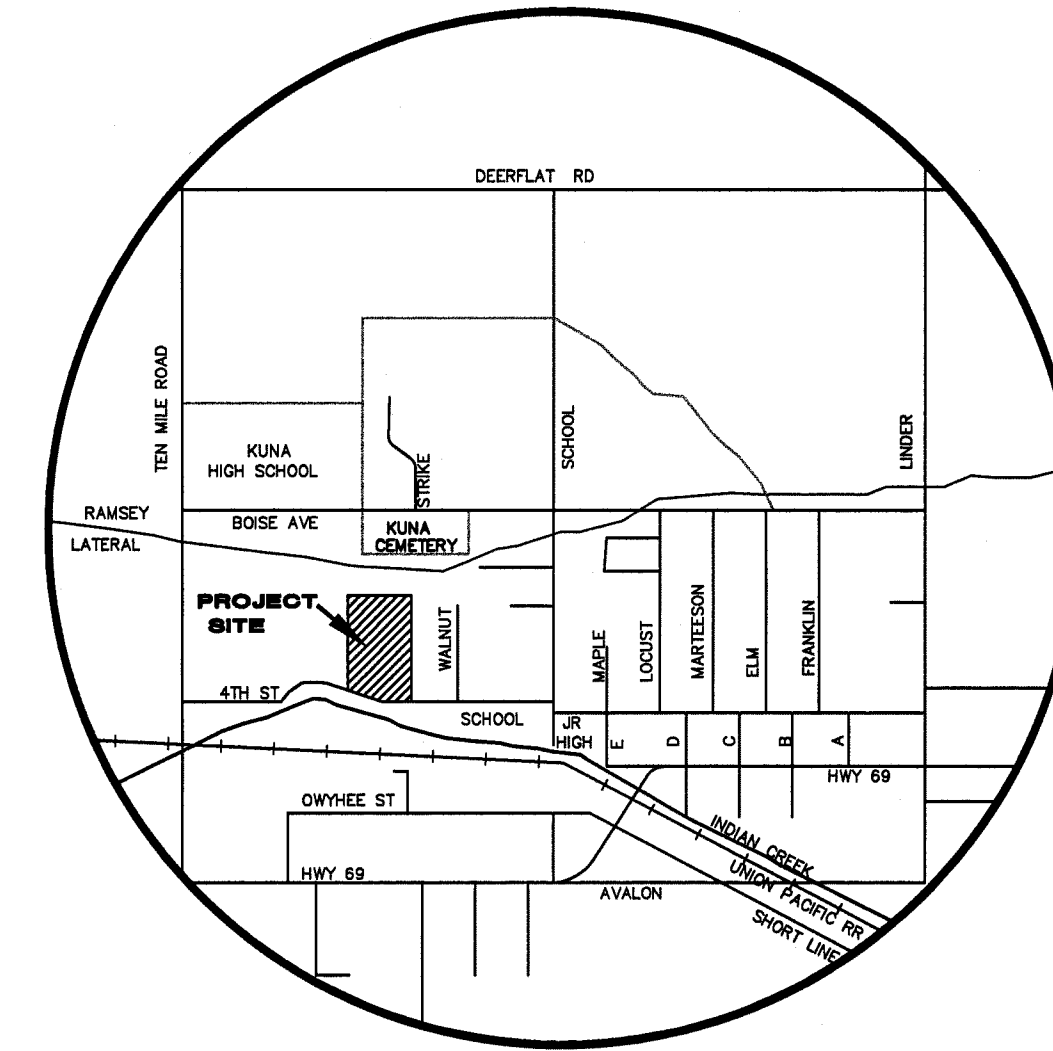
ROEDER MEADOWS SUBDIVISION

SITUATED IN THE SW 1/4 OF SECTION 23,
T.2N., R.1W., B.M., KUNA,
ADA COUNTY, IDAHO
1995

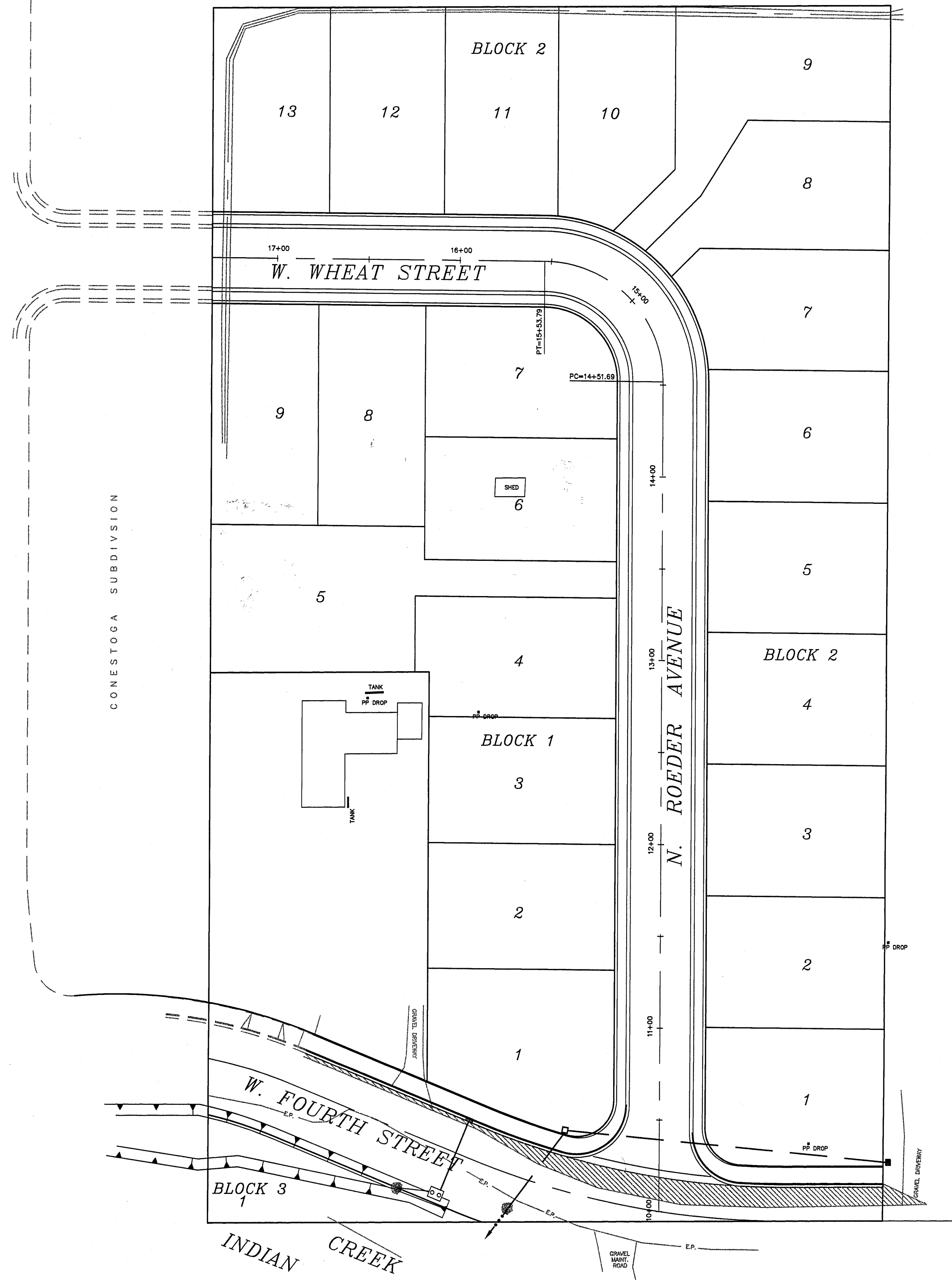
PLOT DATE: 1/20/98

INDEX OF SHEETS

- 1 TITLE
- 2 SEWER & WATER - PLAN AND PROFILES
- 3 STREETS - PLAN AND PROFILES
- 4 PRESSURIZED IRRIGATION - PLAN AND DETAILS
- 5 DETAILS AND NOTES

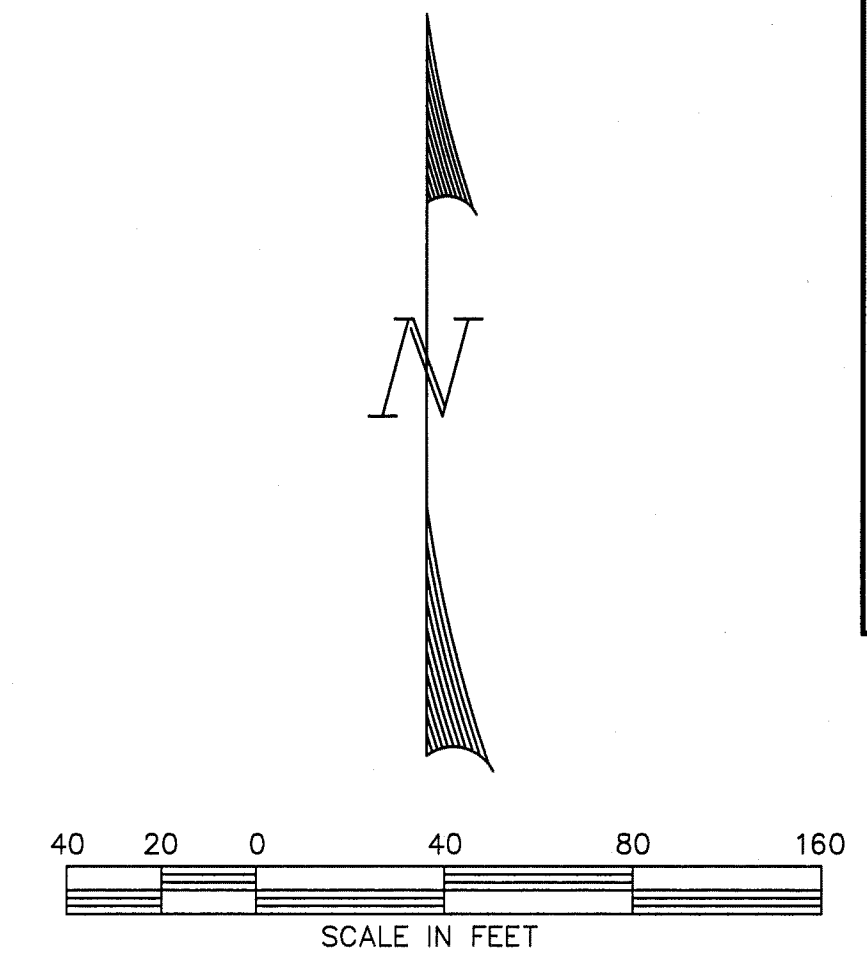


VICINITY MAP
NTS



LEGEND

- MAIL BOX CLUSTER
- ▬▬▬ STD ROLLED CURB AND GUTTER
- ▬▬▬ STD VERT CURB AND GUTTER
- ↪ HANDICAP RAMP
- DRAINAGE FLOW ARROW
- ▬▬▬ STD CROSS DRAIN
- TBVC TOP BACK VERTICAL CURB ELEVATION
- TBRC TOP BACK ROLLED CURB ELEVATION (TYP AT ALL LOCATIONS, UNLESS NOTED OTHERWISE)
- SEWER MANHOLE
- SC SEWER SERVICE STATIONING
- SL SEWER SERVICE LENGTH
- ▬▬▬ SANITARY SEWER MAIN AND DIRECTION OF FLOW
- ⊙ FIRE HYDRANT
- ⊙ STREET LIGHT
- ⊙ WATER VALVE
- ▲ BLOWOFF

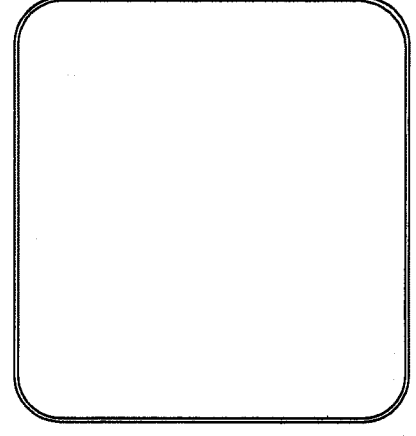


OWNER / DEVELOPER
JOHN ROEDER
601 E. 46TH STREET #24
BOISE, IDAHO 83714
(208)376-8816

NOTE
FOR FURTHER RECORD INFORMATION ALONG
WEST 4TH STREET, SEE ACHD PROJECT
No. 52060.0 SCHOOL AVENUE -
INDIAN CREEK TO DEER ROAD

SCALE	1" = 40'
DESIGN	SFT
DRAWN	SFT
CHECK	HC
DATE	8/15/95
DWG	1000TTL.DWG

REVISION	
1. PER ACHD / KUNA CITY REVIEW	
DATE	10/95



HAROLD COX, P.E.
4090 WEST STATE STREET
BOISE, IDAHO 83703 (208)343-7201

MARKS LAND SURVEYING
COLLEEN MARKS, L.S. 7045
5903 POPULAR DRIVE BOISE, IDAHO 83704
(208)386-7000

RECORD DRAWINGS

03-23-98
DATE

Precision Design & Drafting
3765 NORFOLK WAY
BOISE, IDAHO 83706
(208)386-8093

RECORD DRAWINGS

ROEDER MEADOWS
SUBDIVISION
TITLE SHEET

ROEDER MEADOWS SUBDIVISION

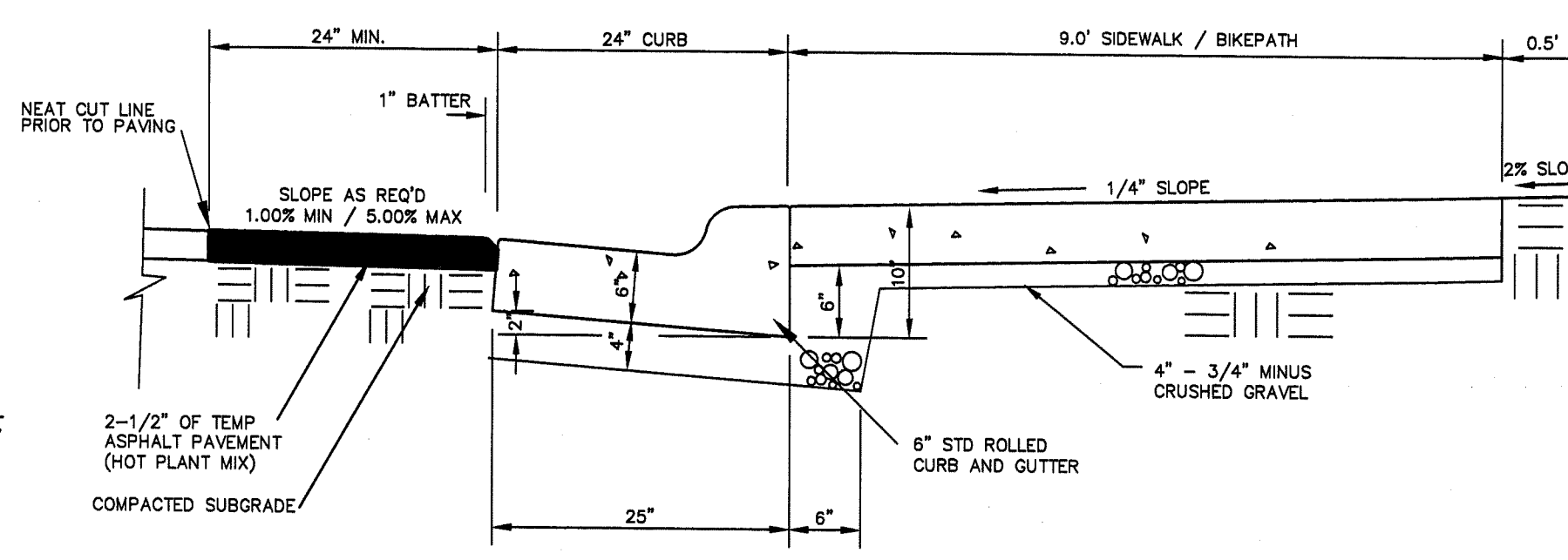
PLOT DATE: 1/20/98

STREETS

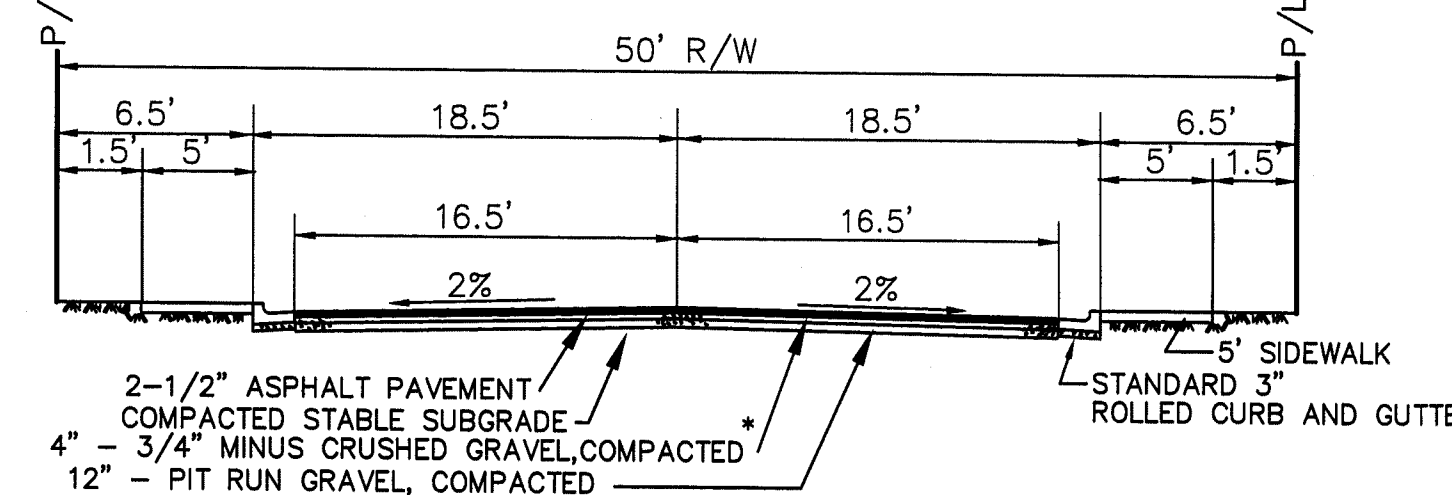
1. ALL WORK SHALL BE CONSTRUCTED TO THE ADA COUNTY HIGHWAY DISTRICT SPECIFICATIONS AS SHOWN IN THE LATEST EDITION OF THE "ADA COUNTY HIGHWAY DISTRICT STANDARD CONSTRUCTION DRAWINGS" AND SHALL BE APPROVED BY THE ADA COUNTY HIGHWAY DISTRICT.
2. CONTRACTOR SHALL OBTAIN CONSTRUCTION PERMIT FROM THE ADA COUNTY HIGHWAY DISTRICT NOT LESS THAN SEVEN DAYS PRIOR TO COMMENCING CONSTRUCTION. NO CONSTRUCTION SHALL BEGIN BEFORE PRECONSTRUCTION MEETING, WHICH THE CONTRACTOR IS REQUIRED TO ATTEND, AS PER "CONSTRUCTION QUALITY ASSURANCE MANUAL."
3. STANDARD SEWER AND STORM DRAIN MANHOLES, CONES AND STRUCTURES SHALL BE SET TO SPECIFIED ELEVATION BY THEIR RESPECTIVE CONTRACTORS. ALL REMAINING MANHOLE MATERIALS, EXCEPT CONCRETE COLLARS, NECESSARY TO CONSTRUCT MANHOLE TO FINISHED GRADE IN PAVEMENT AREAS SHALL BE FURNISHED BY THE PIPE CONTRACTORS FOR PLACEMENT AT FINISHED GRADE BY STREET CONTRACTOR. FOR MANHOLES NOT WITHIN PAVEMENT AREAS, THE MANHOLE RINGS SHALL BE SET TO FINISHED GRADE BY THEIR RESPECTIVE CONTRACTORS. ALL MATERIALS FOR CONCRETE COLLARS AROUND SANITARY SEWER AND STORM DRAIN MANHOLE RINGS SHALL BE SUPPLIED AND CONSTRUCTED TO FINISHED GRADE BY STREET CONTRACTOR IN ACCORDANCE WITH A.C.H.D. SPECIFICATIONS.
4. CONTRACTOR SHALL CONSTRUCT 3-1/2" OF ASPHALT PAVEMENT THICKNESS AT JOINT LOCATIONS FOR ALL PAVEMENT MATCHES.
5. ALL REINFORCED CONCRETE PIPE SHALL CONFORM TO A.S.T.M. C-76 SPECIFICATIONS FOR THE CLASS OF PIPE INDICATED, AND SHALL BE INSTALLED WATERTIGHT.
6. ALL WORK WILL BE INSPECTED BY THE ADA COUNTY HIGHWAY DISTRICT IN ACCORDANCE WITH THE LATEST EDITION OF THE "CONSTRUCTION QUALITY ASSURANCE MANUAL."
7. IRRIGATION AND STORM DRAIN PIPE IN STREETS SHALL UTILIZE TYPE I BEDDING MATERIAL, PLACED IN 6" LAYERS AS PER A.C.H.D. TYPICAL TRENCH DETAIL, DRAWING NO. SD-301.
8. ALL P.V.C. STORM DRAIN PIPE SHALL CONFORM TO A.S.T.M. 3034, SDR 35.

GENERAL

1. THE LOCATIONS OF EXISTING UNDERGROUND UTILITIES ARE SHOWN IN AN APPROXIMATE WAY ONLY. THE CONTRACTOR SHALL DETERMINE THE EXACT LOCATION OF ALL EXISTING UTILITIES BEFORE COMMENCING WORK. HE AGREES TO BE FULLY RESPONSIBLE FOR ANY AND ALL DAMAGES WHICH MIGHT BE OCCASIONED BY HIS FAILURE TO EXACTLY LOCATE AND PRESERVE ANY AND ALL UNDERGROUND UTILITIES.
2. ALL LOT DIMENSIONS AND EASEMENTS SHALL BE TAKEN FROM THE PLAT OF THE SUBDIVISION.
3. ALL WATER, SEWER AND SERVICE LINES SHALL BE INSTALLED, COMPLETE, PRIOR TO CURB, GUTTER AND SIDEWALK CONSTRUCTION.
4. RETAIN AND PROTECT ALL IRRIGATION AND DRAINAGE PIPE CROSSINGS, IF NECESSARY THE PIPE WILL BE REPLACED BY THE CONTRACTOR.
5. RETAIN AND PROTECT ALL WATER METER VAULTS, IF THE VAULTS ARE DISTURBED, THE CONTRACTOR SHALL CONTACT THE APPROPRIATE WATER COMPANY FOR REPLACEMENT.
6. RETAIN AND PROTECT EXISTING CURB, GUTTER AND SIDEWALK. IF REMOVAL IS NECESSARY, REPLACEMENT SHALL BE INCIDENTAL TO THE PROJECT.
7. CONTRACTOR SHALL REPAVE TO EXISTING GRADES, ANY EXISTING PAVE STREETS THAT MAY BE DISTURBED BY CONSTRUCTION.
8. CONTRACTOR SHALL OBTAIN CONSTRUCTION PERMIT FROM ADA COUNTY HIGHWAY DISTRICT 24 HOURS BEFORE COMMENCING CONSTRUCTION. NO CONSTRUCTION SHALL BEGIN BEFORE PRECONSTRUCTION MEETING AS PER "CONSTRUCTION QUALITY ASSURANCE MANUAL", WHICH THE CONTRACTOR IS REQUIRED TO ATTEND.

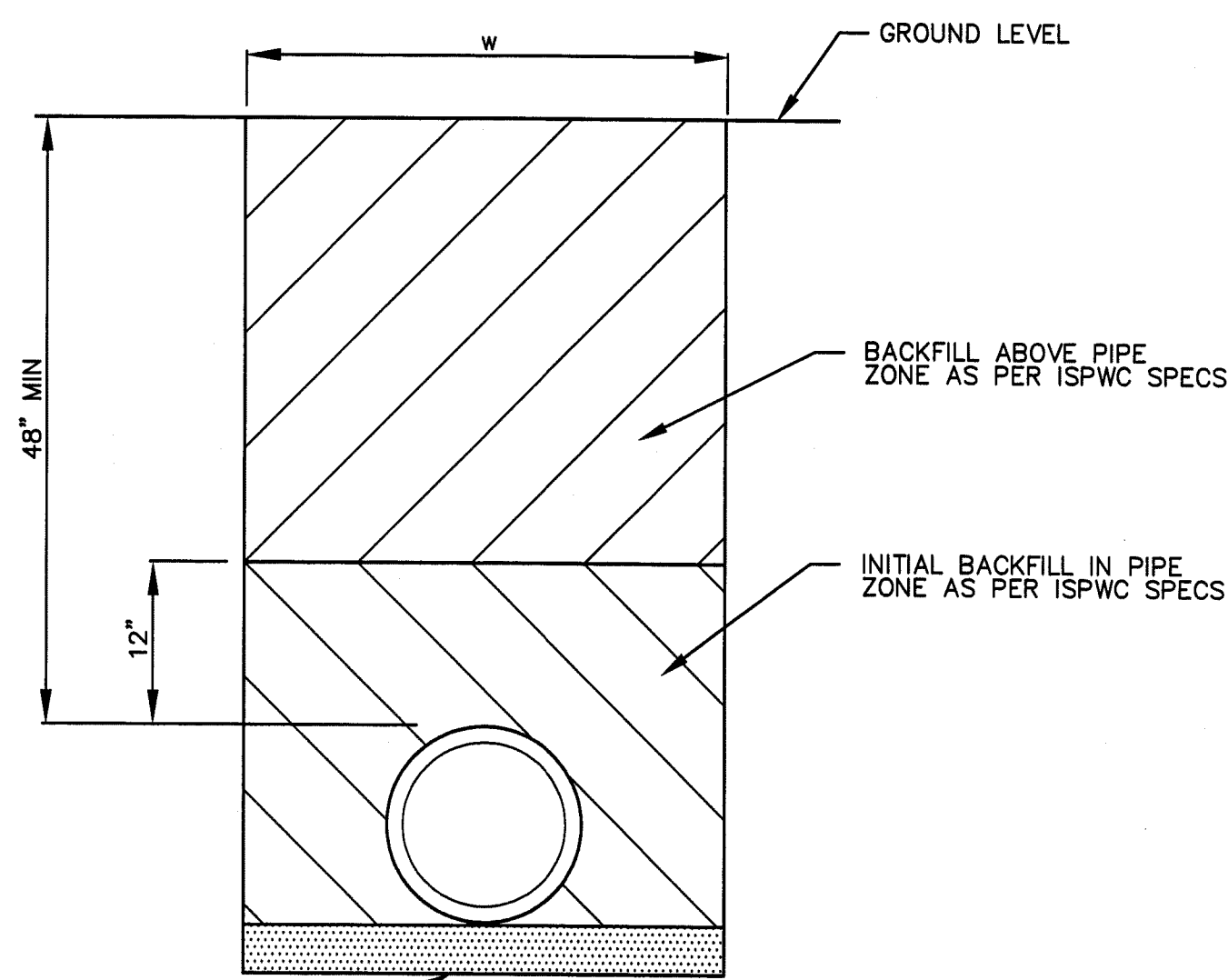


PAVEMENT MATCH AND SIDEWALK DETAIL ALONG FOURTH STREET



* A.C.H.D. POLICY REQUIRES THE APPLICATION OF A GRANULAR HERBICIDE ON THIS LAYER. THE CONTRACTOR SHALL USE SIMPLOTS "MONOBAR-CHLORATE", LILLY MILLER'S "NUXALL", C.L. KEYS "FRAMUTOL", OR AN APPROVED EQUAL. THE PRODUCT SHALL BE APPLIED AT 2 LBS. PER 100 SQUARE FEET, BY MECHANICAL MEANS, SUCH AS A WALK BEHIND SPREADER. CONTRACTOR SHALL VERIFY THIS APPLICATION WITH THE A.C.H.D. INSPECTOR.

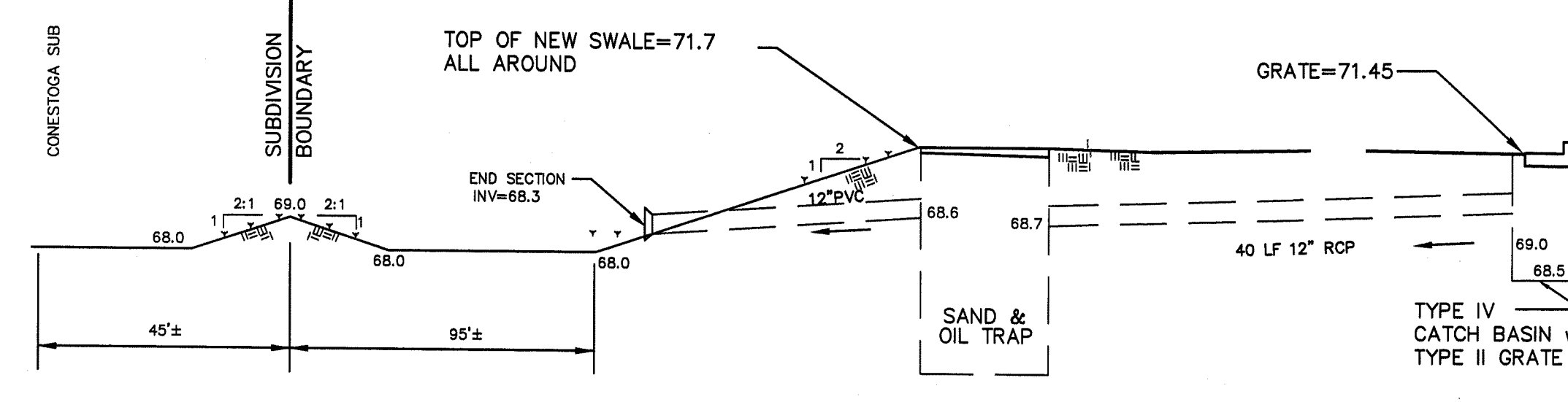
NOTE FOR FURTHER RECORD INFORMATION ALONG WEST 4TH STREET, SEE ACHD PROJECT No. 52060.0 - SCHOOL AVENUE - INDIAN CREEK TO DEER ROAD



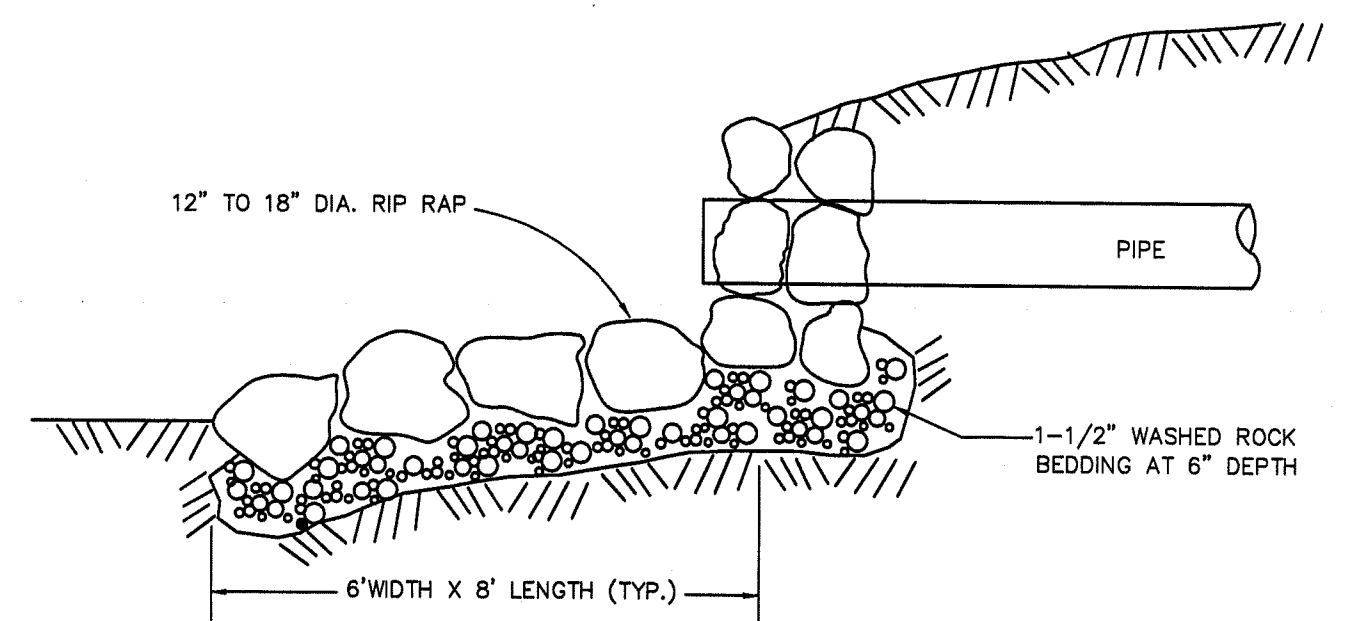
PIPE BEDDING AS PER ISWPC SPECS
4" MIN BEDDING, 6" INTO ROCK

ALL TRENCH EXCAVATION AND CONSTRUCTION ACTIVITIES SHALL CONFORM TO THE REQUIREMENTS OF THE OCCUPATIONAL SAFETY AND HEALTH ADMINISTRATION (OSHA). THE CONTRACTOR SHALL BECOME FAMILIAR WITH THOSE REQUIREMENTS AND SHALL BE RESPONSIBLE FOR FULL COMPLIANCE.

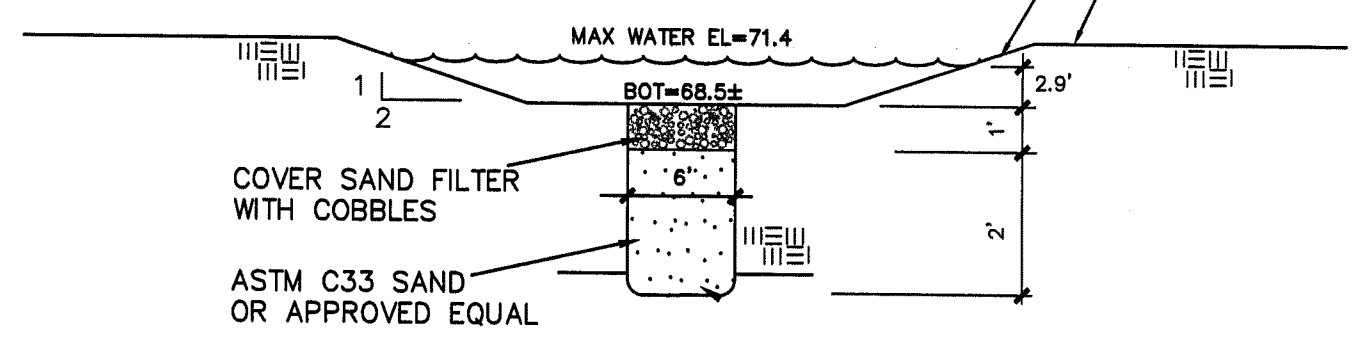
TYPICAL TRENCH SECTION N.T.S.



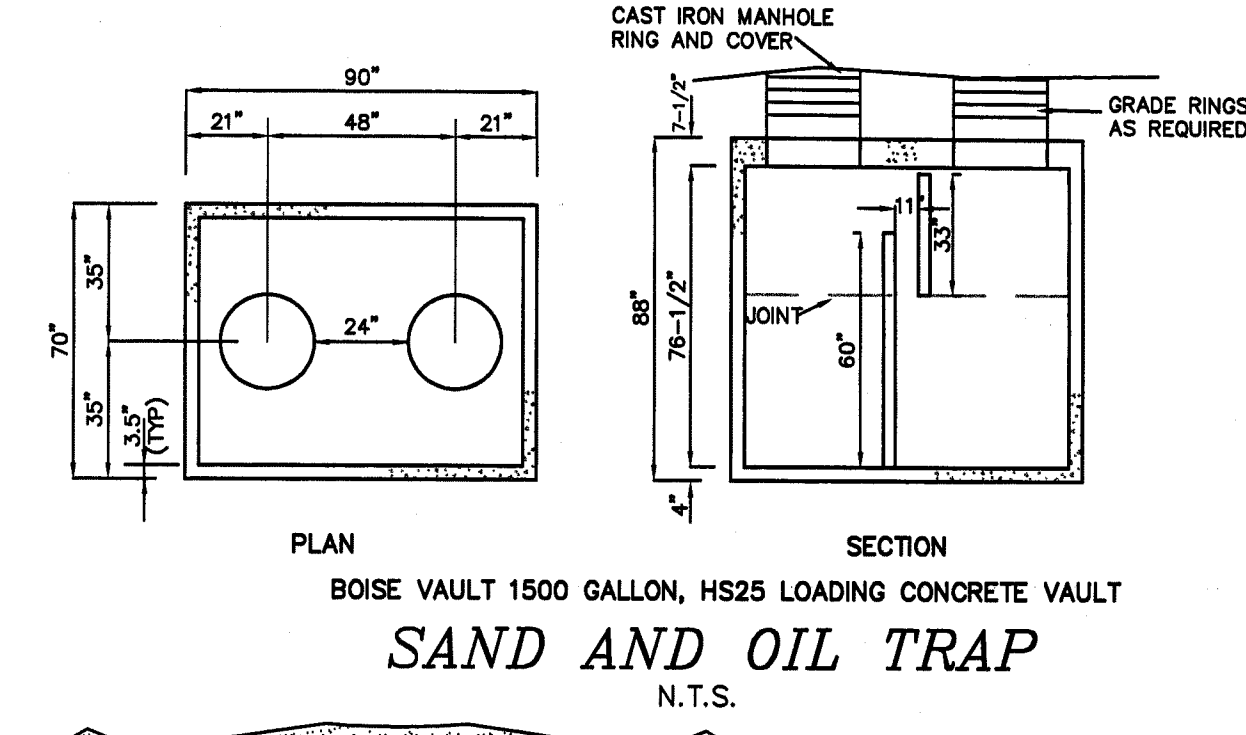
DRAINAGE SWALE CROSS SECTION N.T.S.



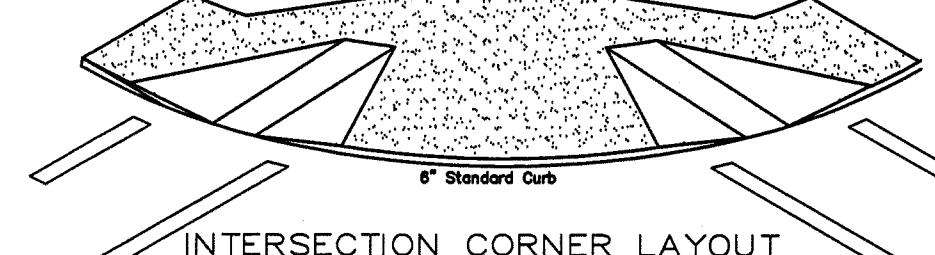
CULVERT END TREATMENT N.T.S.



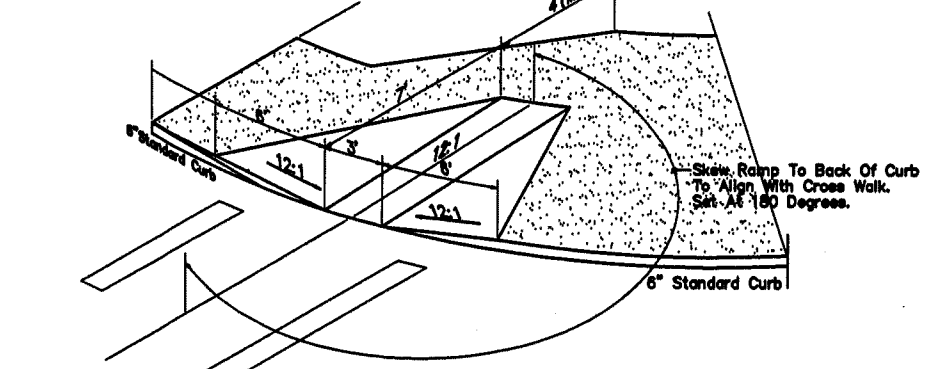
DRAINAGE SWALE CROSS SECTION N.T.S.



BOISE VAULT 1500 GALLON, HS25 LOADING CONCRETE VAULT N.T.S.

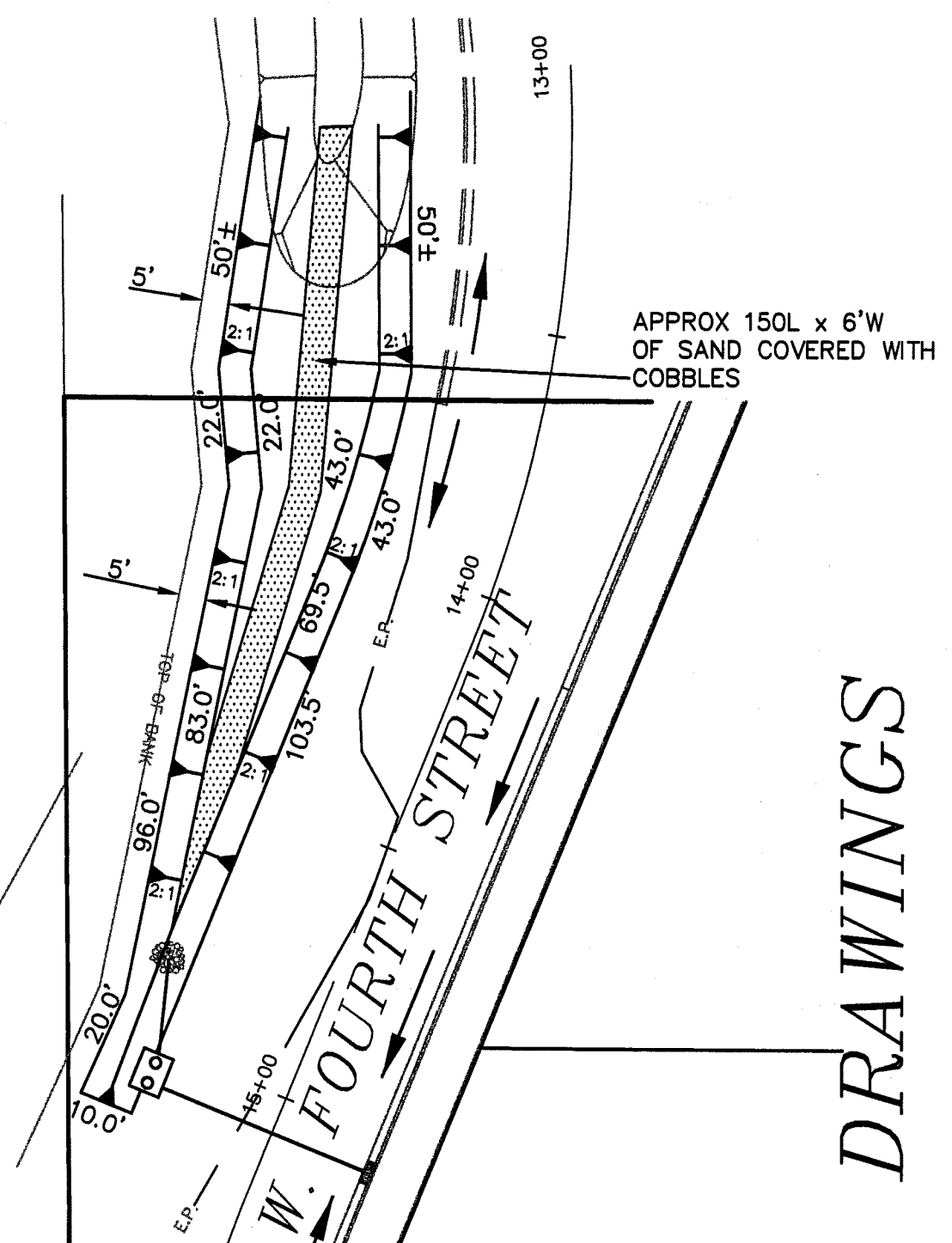


1. All Ramps To Conform To American Disabilities Act Standards.
2. All Ramp Slopes Shall Be No Steeper Than 12 To 1.
3. All Ramp Dimensions Based On 6" Curb Height.
4. All Corners Require 2 Ramps Unless Otherwise Approved By District Engineer.
5. Intersection Corner Ramps Based On Design Turning Vehicle Required by ACHD.
6. To Determine Ramp Depth And Wing Length For Other Than The Following Method: Take The Difference In Elevation Of The Ramps, Multiply The Difference In Elevation By 12 To Get Ramp Depth. For Example: 7' Difference x 12 = 84" Deep Ramp or 7'-0" As Shown.



NOTE: CONTRACTOR MUST VERIFY WHICH RAMP CONFIGURATION TO USE WITH THE A.C.H.D. INSPECTOR PRIOR TO CONSTRUCTION. A.C.H.D. HAS ADOPTED THE ISWPC REVISIONS FOR SD-713, SD-715A, SD-715B, SD-715C, AND SD-715D AS OF AUGUST, 1995.

TYPICAL RAMP APPLICATION STD DWG NO. SD-715A N.T.S.



RETENTION CALCULATIONS
R/W OF ROEDER STREET = 36,750 SF
R/W OF 4TH STREET = 23,250 SF
(ALONG SUBDIVISION)

TOTAL R/W = 60,000 SF
60,000 SF x 1" (0.083") = 5000 CF OF RETENTION REQUIRED

ADDITIONAL RETENTION REQUIRED FOR FUTURE ACHD PROJECT No. 52060 FROM APPROX STA 17+45 TO STA 23+12
567 LF x 60" R/W = 34,000 SF
34,000 SF x 1" (0.83") = 2825 CF OF RETENTION REQUIRED

TOTAL RETENTION REQUIRED FOR BOTH PROJECTS = 7825 CF

BOTTOM OF RETENTION AREA = 2046 SF x 2.9' DEEP = 5933 CF
SIDES OF RETENTION AREA = 2354 SF x 1.5' DEEP = 3531 CF
TOTAL ABOVE GROUND RETENTION = 9464 CF

DRAINAGE SWALE PLAN VIEW N.T.S.

RECORD DRAWINGS

REGISTERED PROFESSIONAL ENGINEER
STATE OF IDAHO
2848
DAVID H. ROYLANE

No Change DATE

SCALE	N T S
DESIGN	SFT
DRAWN	SFT
CHECK	HC
DATE	8/15/95
DWG	1000STR1.DWG

REVISION	
1. PER ACHD / KUNA CITY REVIEW	
2. PER ACHD / KUNA CITY REVIEW #2	
3. REV INVERTS IN DRAINAGE DETAIL	

HAROLD COX, P.E.
4090 WEST STATE STREET
BOISE, IDAHO 83703 (208)343-7201

MARKS LAND SURVEYING
COLLEEN MARKS, L.S. 7045
5803 POPULAR DRIVE BOISE, IDAHO 83704
(208)378-7700

RECORD DRAWINGS

ROEDER MEADOWS SUBDIVISION

DETAILS AND NOTES

3755 NORFOLK WAY
BOISE, IDAHO 83706
(208)386-9086

RECORD DRAWINGS

ROEDER MEADOWS SUBDIVISION

DETAILS AND NOTES

SHEET 5 OF 5