

GENERAL

- 1. ALL WORK SHALL BE DONE IN ACCORDANCE WITH THE STANDARDS, SPECIFICATIONS, AND REQUIREMENTS OF THE "IDAHO STANDARDS FOR PUBLIC WORKS CONSTRUCTION," (ISPCW), LATEST EDITION, THE CITY OF KUNA STANDARDS AND SPECIFICATIONS AND CURRENT REVISIONS THERETO, AND THE ADA COUNTY HIGHWAY DISTRICT (ACHD).

ROADWAY

- 1. ALL WORK SHALL BE CONSTRUCTED TO THE LATEST EDITION OF THE "IDAHO STANDARDS FOR PUBLIC WORKS CONSTRUCTION," (ISPCW), AND THE LATEST EDITION OF THE ISPCW "STANDARD CONSTRUCTION DRAWINGS", AND SHALL BE APPROVED BY THE ADA COUNTY HIGHWAY DISTRICT.

PROSPECTOR SUBDIVISION NO. 6

-INDEX OF RECORD PLAN SHEETS-

Table with columns SHEET and DESCRIPTION. Includes entries for COVER SHEET & PLAN INDEX, HORIZONTAL CONTROL PLAN, STREET PLAN & PROFILE (W. NUGGET STREET), STREET PLAN & PROFILE (N. PYRITE PLACE & N. SLUCE WAY), STREET PLAN & PROFILE (N. QUARTZITE AVENUE), STREET & DRAINAGE DETAILS, SEWER INDEX, SEWER PLAN & PROFILE (LINE A) & PRESSURE IRRIGATION PLAN, SEWER PLAN & PROFILE (LINES B, C & D) & PRESSURE IRRIGATION PLAN, SEWER PLAN & PROFILE (LINE A) & PRESSURE IRRIGATION PLAN, and POND REVISION PLAN.

WATER

- 1. THE WATER SYSTEM SHALL BE CONSTRUCTED IN ACCORDANCE WITH THE CITY OF KUNA GENERAL DESIGN AND CONSTRUCTION REQUIREMENTS FOR WATER AND SEWER CONSTRUCTION AND SHALL CONFORM WITH THE STANDARDS SET FORTH IN THE "IDAHO REGULATIONS FOR PUBLIC DRINKING WATER SYSTEMS," THE ISPCW STANDARD SPECIFICATIONS AND DRAWINGS, LATEST EDITION, AND THE UNIFORM PLUMBING CODE, AND LAWS OF THE STATE OF IDAHO.

IRRIGATION

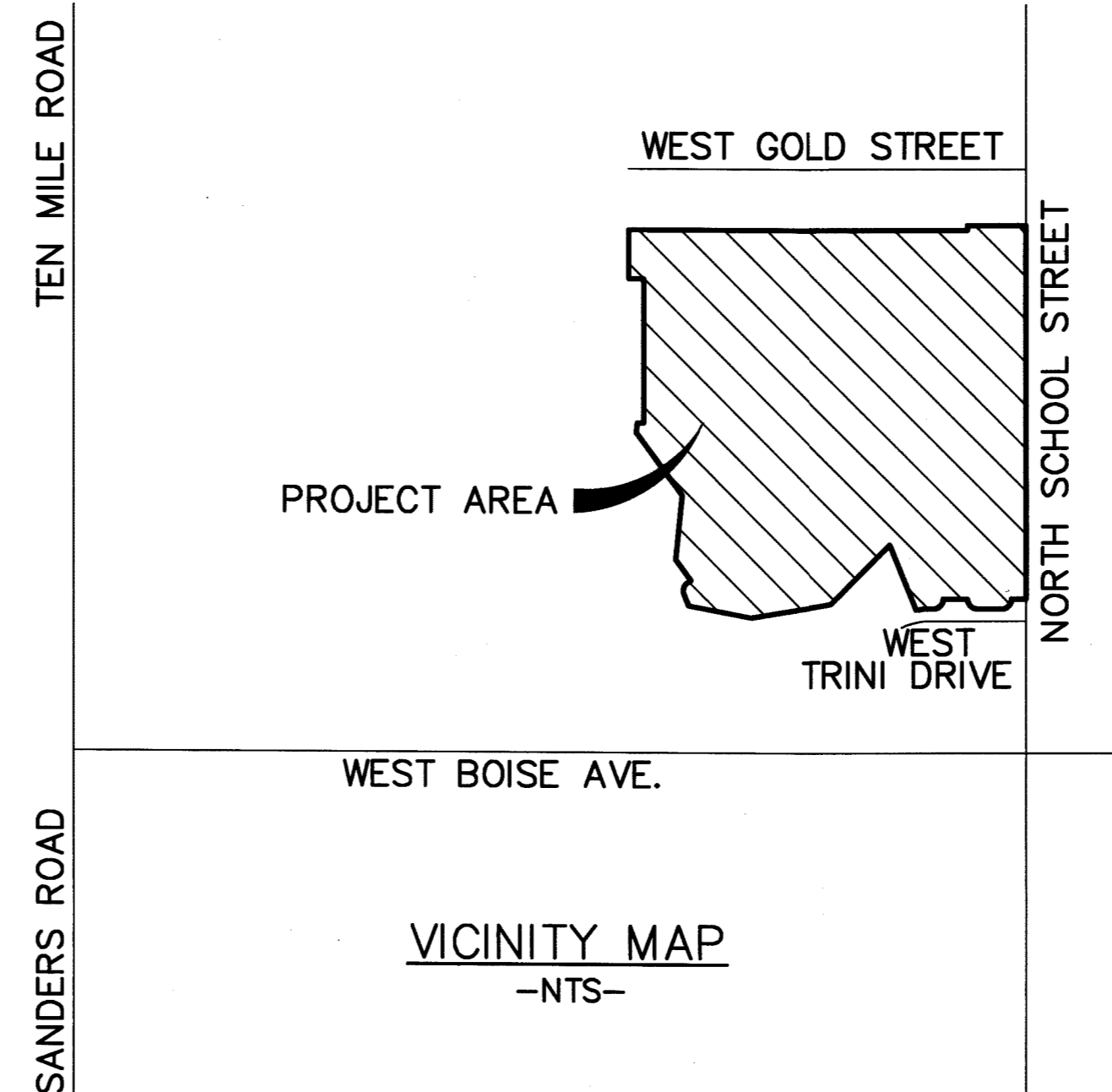
- 1. ALL PRESSURE IRRIGATION SHALL BE INSTALLED PER THE CITY OF KUNA "GENERAL DESIGN AND CONSTRUCTION REQUIREMENTS FOR PRESSURE IRRIGATION FACILITIES."

SEWER

- 1. ALL WORK SHALL BE DONE IN ACCORDANCE WITH THE CITY OF KUNA GENERAL DESIGN AND CONSTRUCTION REQUIREMENTS FOR WATER AND SEWER CONSTRUCTION, AND THE SEWER SPECIFICATIONS AND STANDARD DRAWINGS OF THE IDAHO STANDARDS FOR PUBLIC WORKS CONSTRUCTION (ISPCW), LATEST EDITION, AND THE UNIFORM PLUMBING CODE, AND LAWS OF THE STATE OF IDAHO.

UTILITIES

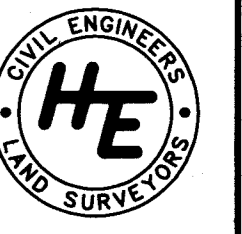
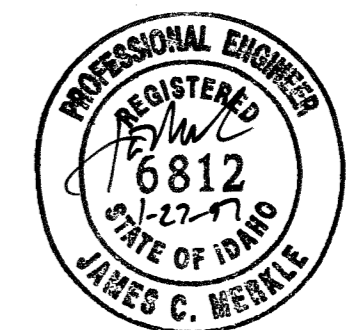
- 1. THE PIPE CONTRACTOR SHALL REPLACE ALL PAVEMENT AND CONCRETE REMOVED FOR THE INSTALLATION OF WATER, SEWER, OR IRRIGATION PIPE. ALL PAVEMENT SHALL BE REPLACED WITHIN SEVEN CALENDAR DAYS FROM THE TIME THE PAVEMENT AND CONCRETE IS REMOVED.

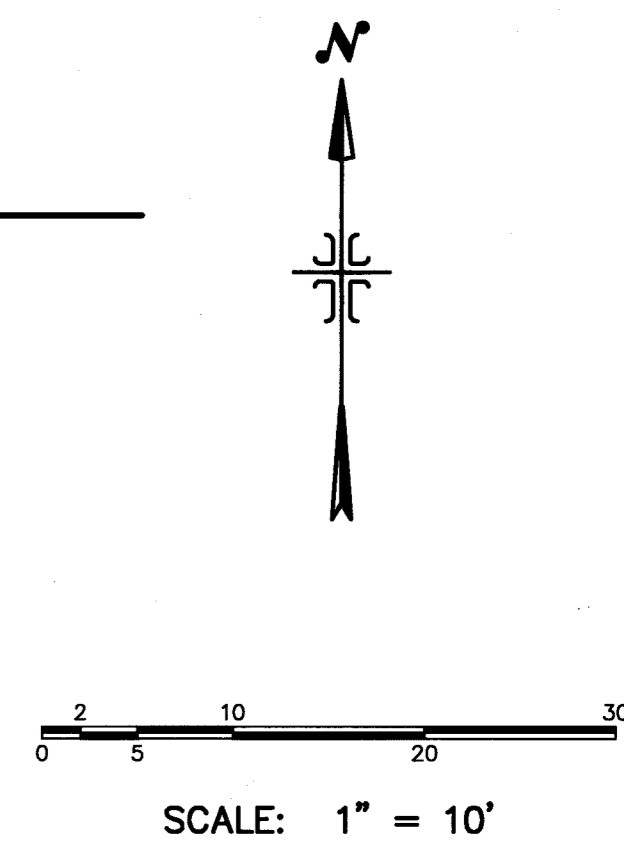
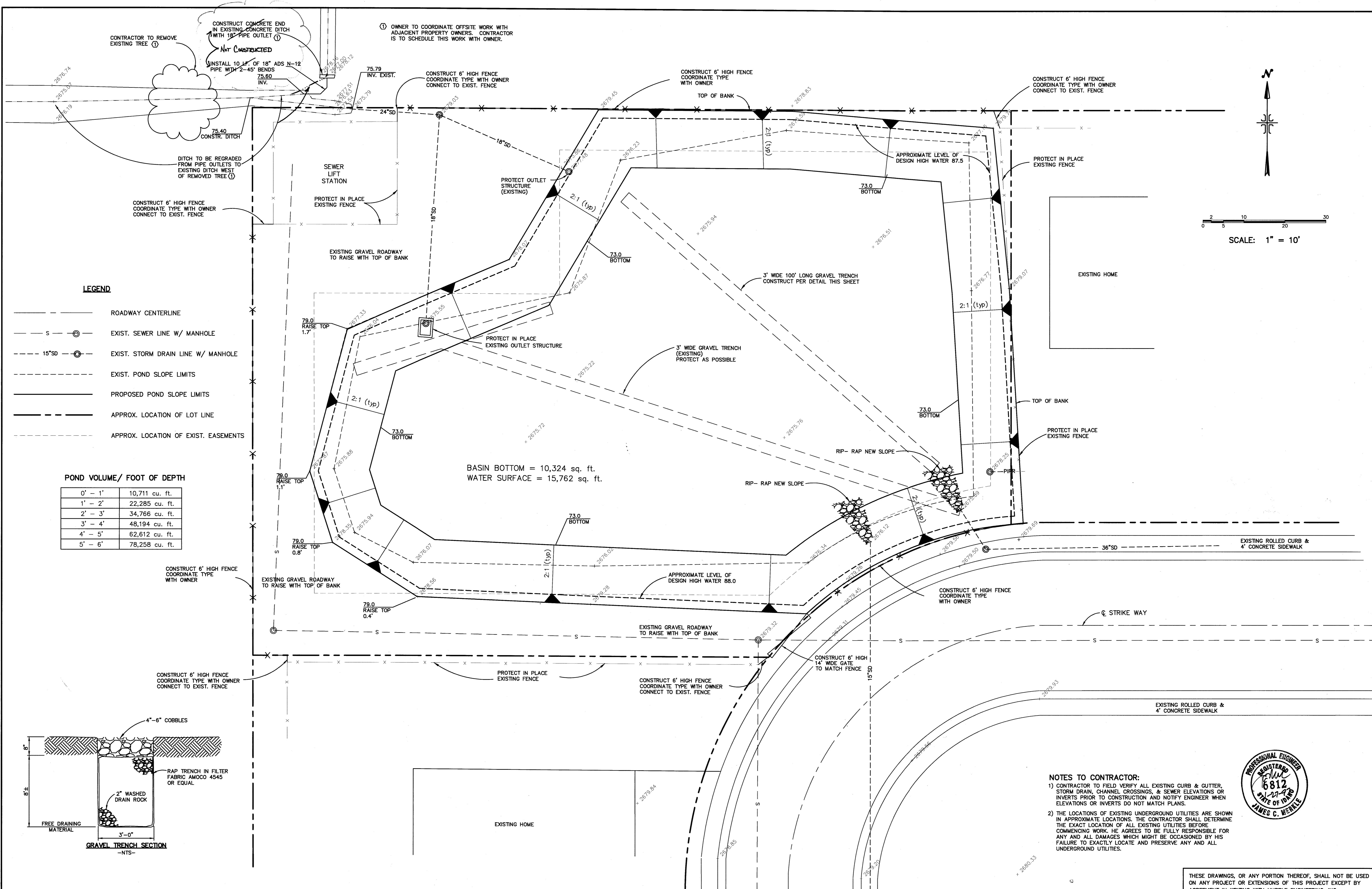


PROSPECTOR SUBDIVISION NO. 6 RECORD DRAWINGS

HUBBLE ENGINEERING, INC. ENGINEERING-SURVEYING-PLANNING

9550 BETHEL COURT BOISE, IDAHO 83709 (208) 322-8992



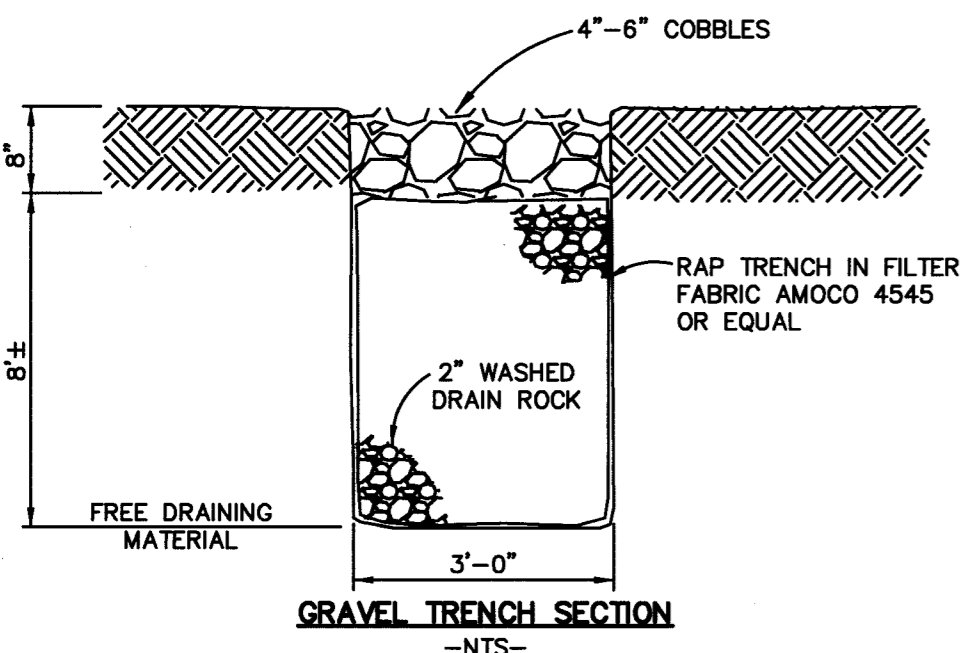


LEGEND

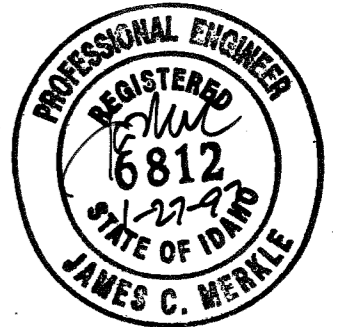
- ROADWAY CENTERLINE
- s — EXIST. SEWER LINE W/ MANHOLE
- - - 15"SD — EXIST. STORM DRAIN LINE W/ MANHOLE
- - - EXIST. POND SLOPE LIMITS
- PROPOSED POND SLOPE LIMITS
- - - APPROX. LOCATION OF LOT LINE
- - - APPROX. LOCATION OF EXIST. EASEMENTS

POND VOLUME/ FOOT OF DEPTH

0' - 1'	10,711 cu. ft.
1' - 2'	22,285 cu. ft.
2' - 3'	34,766 cu. ft.
3' - 4'	48,194 cu. ft.
4' - 5'	62,612 cu. ft.
5' - 6'	78,258 cu. ft.



- NOTES TO CONTRACTOR:**
- CONTRACTOR TO FIELD VERIFY ALL EXISTING CURB & GUTTER, STORM DRAIN, CHANNEL CROSSINGS, & SEWER ELEVATIONS OR INVERTS PRIOR TO CONSTRUCTION AND NOTIFY ENGINEER WHEN ELEVATIONS OR INVERTS DO NOT MATCH PLANS.
 - THE LOCATIONS OF EXISTING UNDERGROUND UTILITIES ARE SHOWN IN APPROXIMATE LOCATIONS. THE CONTRACTOR SHALL DETERMINE THE EXACT LOCATION OF ALL EXISTING UTILITIES BEFORE COMMENCING WORK. HE AGREES TO BE FULLY RESPONSIBLE FOR ANY AND ALL DAMAGES WHICH MIGHT BE OCCASIONED BY HIS FAILURE TO EXACTLY LOCATE AND PRESERVE ANY AND ALL UNDERGROUND UTILITIES.



THESE DRAWINGS, OR ANY PORTION THEREOF, SHALL NOT BE USED ON ANY PROJECT OR EXTENSIONS OF THIS PROJECT EXCEPT BY AGREEMENT IN WRITING WITH HUBBLE ENGINEERING, INC.

6	DESIGNED BY:	DATE:
5	DRAWN BY:	DATE:
4	CHECKED BY:	DATE:
3	APPROVED:	DATE:
2	REVISD POND DESIGN PER CITY	MM 4/10/96
1	REVISD LAYOUT PER CITY	MM 3/25/96
NO.	REVISIONS	BY DATE

HUBBLE ENGINEERING, INC.
ENGINEERING-SURVEYING-PLANNING

9550 BETHEL COURT
BOISE, IDAHO 83709
(208) 322-8992

PROSPECTOR SUBDIVISION #6

POND REVISION PLAN	JOB NO. 96-018
RECORD DRAWING	SHEET NO. 11