

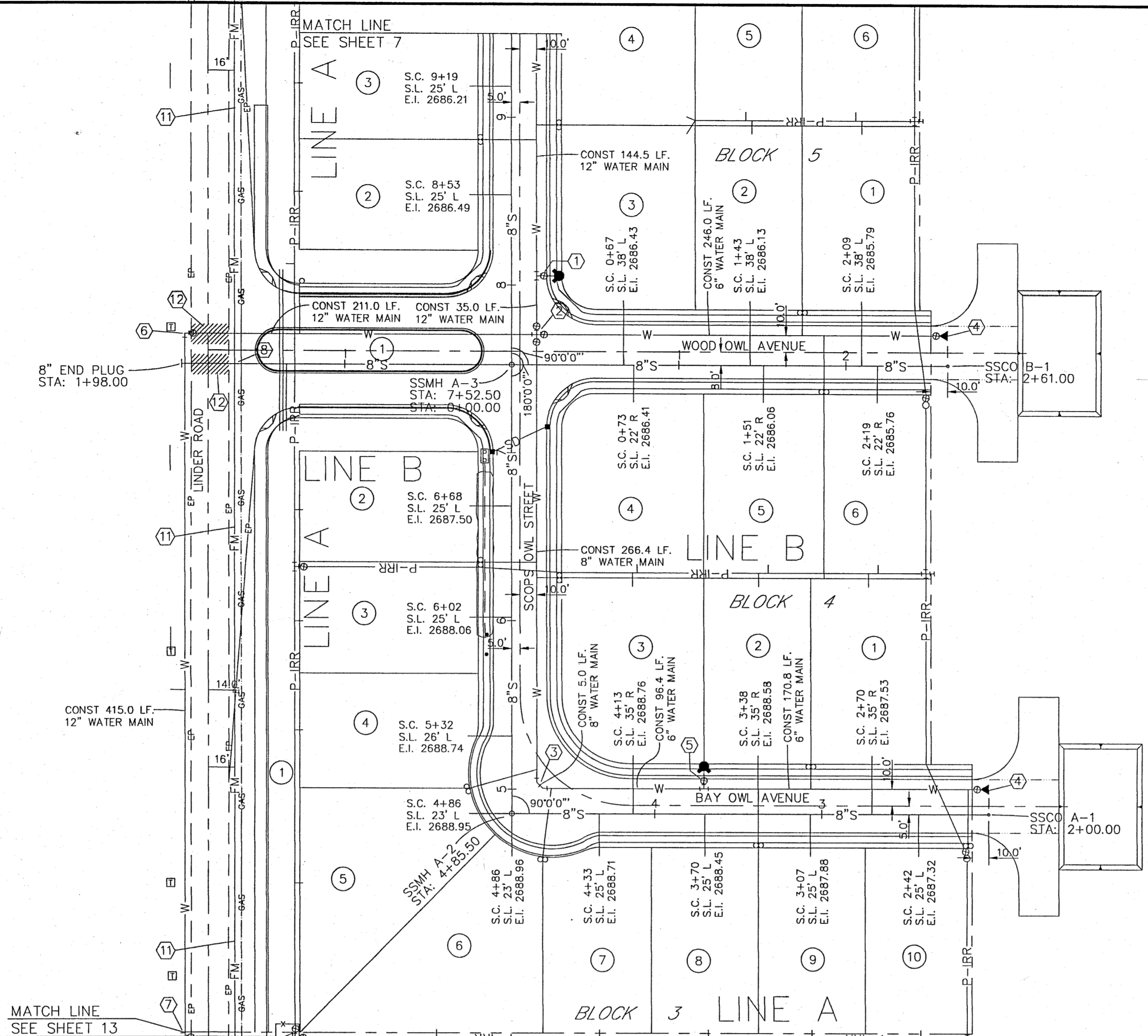
**LEGEND**

- PROPERTY LINE
- RIGHT-OF-WAY LINE
- CENTERLINE
- 8"S --- SANITARY SEWER LINE
- CONST. SEWER MANHOLE
- S --- EXIST. SANITARY SEWER LINE
- ⊙ EXIST. 5.0' SANITARY SEWER MANHOLE
- W --- CONST. WATER LINE
- 8 --- WATER SERVICE AND WATER METER
- W --- EXIST. WATER LINE
- S.C. SANITARY SEWER SERVICE CONNECTION - STATION
- S.L. SANITARY SEWER SERVICE LINE - LT. OR RT.
- E.I. END INVERT OF SANITARY SEWER SERVICE
- CONST. WATER VALVE
- ⊙ EXIST. WATER VALVE
- ⚡ INSTALL 6" FIRE HYDRANT
- ⊠ BENCH MARK LOCATION

**NOTES TO CONTRACTOR:**

- 1) CONTRACTOR TO FIELD VERIFY ALL EXISTING CURB & GUTTER, STORM DRAIN, CHANNEL CROSSINGS, & SEWER ELEVATIONS OR INVERTS PRIOR TO CONSTRUCTION AND NOTIFY ENGINEER WHEN ELEVATIONS OR INVERTS DO NOT MATCH PLANS.
- 2) THE LOCATIONS OF EXISTING UNDERGROUND UTILITIES ARE SHOWN IN APPROXIMATE LOCATIONS. THE CONTRACTOR SHALL DETERMINE THE EXACT LOCATION OF ALL EXISTING UTILITIES BEFORE COMMENCING WORK. HE AGREES TO BE FULLY RESPONSIBLE FOR ANY AND ALL DAMAGES WHICH MIGHT BE OCCASIONED BY HIS FAILURE TO EXACTLY LOCATE AND PRESERVE ANY AND ALL UNDERGROUND UTILITIES.

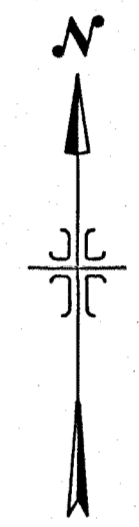
THESE DRAWINGS, OR ANY PORTION THEREOF, SHALL NOT BE USED ON ANY PROJECT OR EXTENSIONS OF THIS PROJECT EXCEPT BY AGREEMENT IN WRITING WITH HUBBLE ENGINEERING, INC.



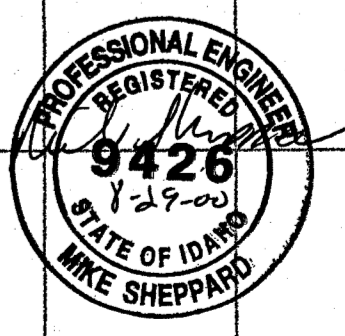
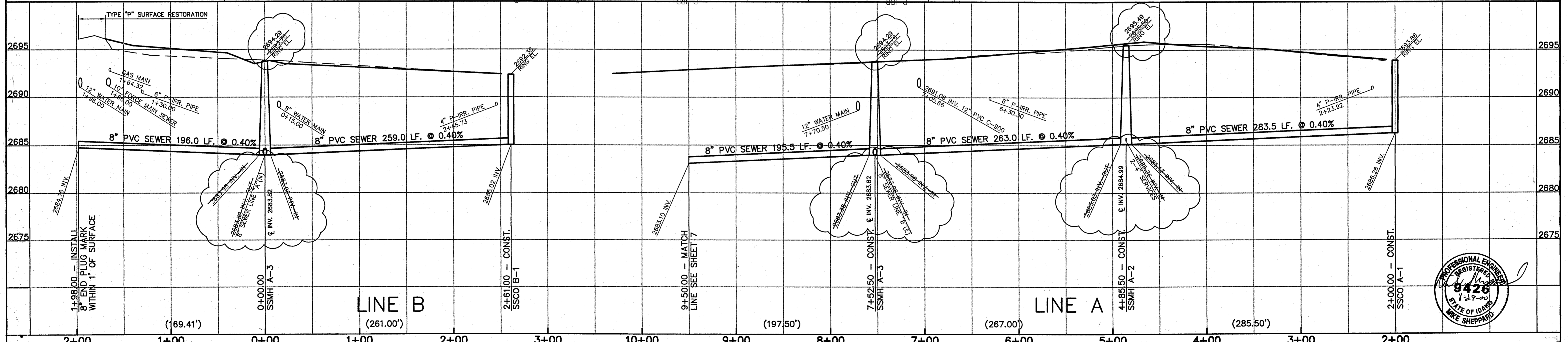
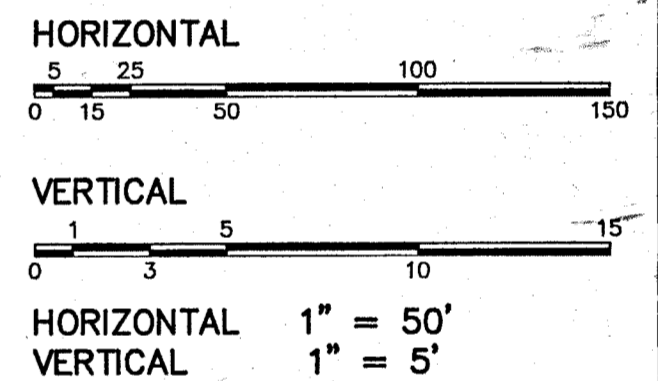
**KEYNOTES**

- 1) CONST. 13.5 LF. 6" WATER MAIN 12"x12"x6" TEE (MxMxFLG) 6" VALVE (MxFLG) FIRE HYDRANT
- 2) 12" CROSS (MxFLGxFLGxFLG) 12"x6" REDUCER (MxFLG) 12"x8" REDUCER (MxFLG) 6" VALVE (MxFLG) 8" VALVE (MxFLG) 12" VALVE (MxFLG)
- 3) 2 - 45° BENDS (MJ) 8"x8" REDUCER (MxFLG)
- 4) CONST. TEMP. 2" BLOW-OFF ASSEMBLY W/6" VALVE (MxFLG)
- 5) CONST. 13.5 LF. 6" WATER MAIN 6"x6"x6" TEE (MxMxFLG) 6" VALVE (MxFLG) FIRE HYDRANT
- 6) 90° BEND (MxFLG) 12" VALVE (MxFLG)
- 7) PRESSURE IRRIGATION CONNECTION 12"x12"x6" TEE (MxMxFLG) 6" GATE VALVE (MxFLG)
- 8) RETAIN & PROTECT IN PLACE EXIST. GAS LINE
- 9) RETAIN & PROTECT IN PLACE EXIST. IRR. PIPE
- 10) RETAIN & PROTECT IN PLACE EXIST. FENCE
- 11) 10" FORCE MAIN SEWER (SEE SHEET 9)
- 12) TYPE "P" SURFACE RESTORATION

*Received As Record Drawings 9/25/00*



SCALE:



*December 11*

K:\Birds-Of-Prey\Engineering\Drawings\BIRDS OF PREY\BOPSEW1-AB.dwg Tue Aug 29 08:05:28 2000

DESIGNED BY: _____ DATE: _____ DRAWN BY: _____ DATE: _____ CHECKED BY: _____ DATE: _____ APPROVED: _____ DATE: _____ COGO FILE: _____ REVISIONS: _____ BY: _____ DATE: _____		<p><b>HUBBLE ENGINEERING, INC.</b> ENGINEERING-SURVEYING-PLANNING</p>	9550 BETHEL COURT BOISE, IDAHO 83709 (208) 322-8992	<b>BIRDS OF PREY ESTATES</b> <b>SUBDIVISION</b>	LINE A & LINE B	JOB NO. 4-99058-02
ADDED FORCE MAIN SEWER ON LINDER RD. RC 8 SEP 99 REVISIONS: _____ BY: _____ DATE: _____					SEWER PLAN & PROFILE	SHEET NO. 6



















