

# ASHWOOD MANOR

## KUNA, IDAHO

# SUBDIVISION CONSTRUCTION PLANS

## 1994

### INDEX OF SHEETS

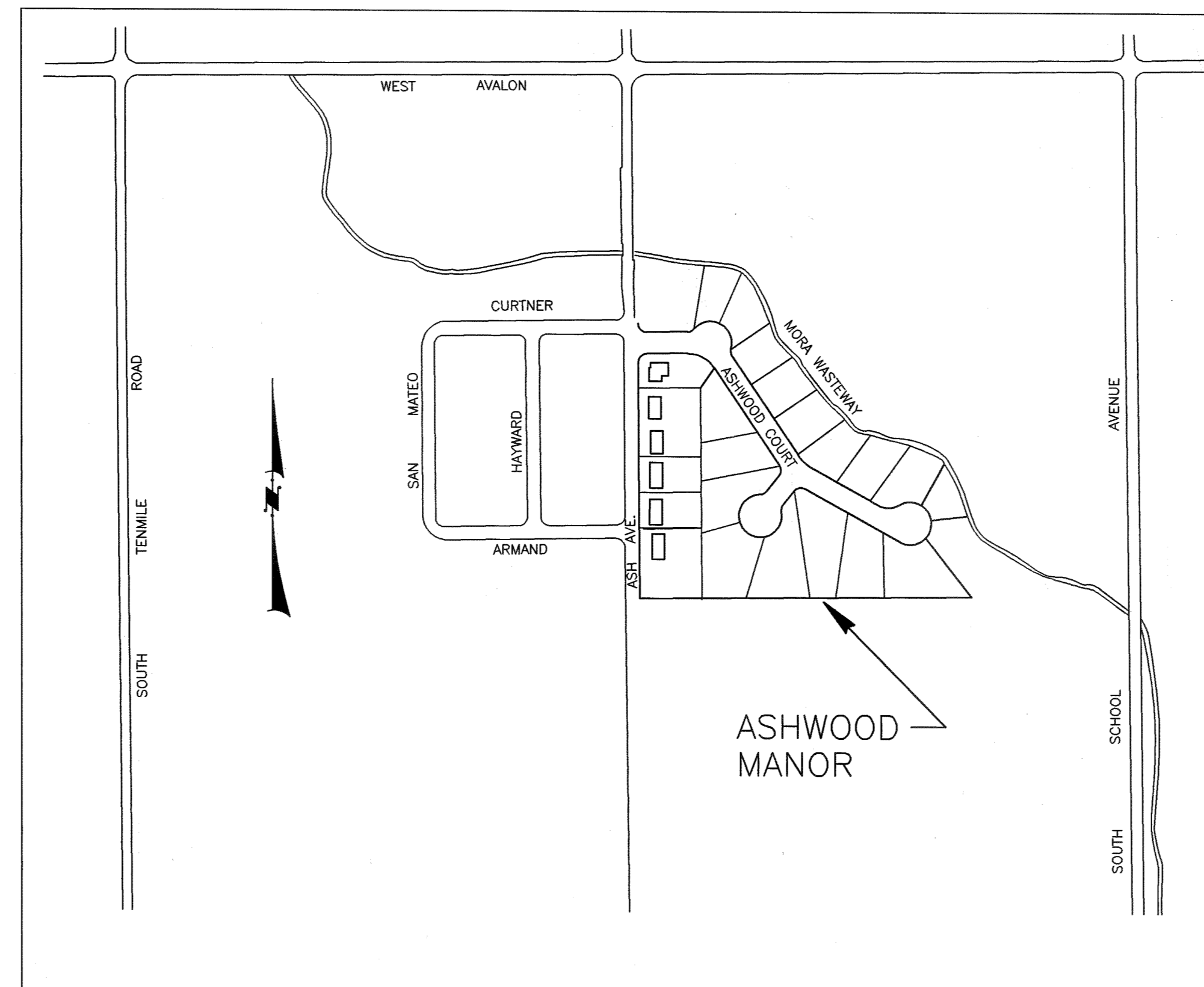
SHEET NUMBER	DESCRIPTION
1.	TITLE SHEET
2.	STREET PLAN/PROFILE
3.	SEWER & WATER PLAN/PROFILE
4.	PROJECT DETAIL SHEET

#### GENERAL NOTES

- All construction shall conform to the drawings, the 1990 edition of the Idaho Standards for Public Works Construction (ISPWC), and the City of Kuna's Design and Construction Requirements for Water, Sewer and Pressure Irrigation Facilities. The contractor shall have a copy of the current I.S.P.W.C. specifications and copies of the City of Kuna General Design and Construction Requirements for Water and Sewer Construction and General Design and Construction Requirements for Pressure Irrigation Facilities on site at all times during construction.
- The existing property is currently vacant with no agricultural operations. The proposed land use is development of an 18-lot single-family subdivision. The entire parcel, with the exception of the public right-of-way, is intended for single-family lots.
- The roads within the limits of this development are dedicated as public right-of-way with the dimensions shown on the plans. The roads shall be improved with curb, gutter and sidewalk.
- The existing Mora Wasteway along the northeast property line shall be retained and protected throughout construction.
- Existing utilities and underground piping are shown in an approximate location only. The contractor shall be responsible for field verification of all utilities and underground piping prior to construction.

#### WATER, SEWER AND IRRIGATION NOTES

- Where the 18-inch minimum vertical separation cannot be maintained between the water line and the sewer or storm drain crossing, the sewer line shall be constructed of materials and with joints which conform to water main standards for a horizontal distance of at least 10 feet on each side of the crossing to assure water tightness prior to backfilling in accordance with Section 400 of the ISPWC.
- Lot pressure irrigation service connections shall be typical of the Kuna Pressure Irrigation Facilities Standard Drawing IRRIG-02 with the addition of a ball valve curb stop assembly, refer to Drawing IRRIG-01.
- All buried irrigation pipe shall be marked in accordance with Note 13 of the Kuna City Irrigation Specifications, which states that all irrigation pipe shall be installed with finder tape, clearly marked with the words "Danger - Unsafe Water" or "Non-Potable Water". The tape shall be located between 6 inches and 18 inches above the top of the pipe. All ground surface projections from the irrigation mains shall be clearly marked as Non-potable water.



VICINITY MAP

SCALE: NONE

#### ROADWAY CONSTRUCTION NOTES

- Contractor shall saw cut and remove existing concrete curb, gutter and sidewalk along removal limits.
- Contractor shall excavate and dispose of existing soil and aggregate to new subgrade. All excavated material shall be placed on-site in the location approved by the developer.
- Upon completion of excavation, the top six inches of subgrade shall be scarified and recompact to 95% of maximum laboratory density as determined by AASHO T-99, prior to placement of aggregate material.
- All asphalt patches shall be saw-cut at a minimum width of two feet.
- Concrete work under this project shall conform to the requirements of Section 700 - Concrete, of the 1990 edition of ISPWC.
- The new curb, gutter and sidewalk shall be formed and placed at the locations and grades shown on the plans.

**RECORD DRAWING**

This record drawing is a true and correct copy of the original drawing as shown on the title block. It is not to be used for any other purpose. The original drawing is the only one to be used for any other purpose. The original drawing is the only one to be used for any other purpose.



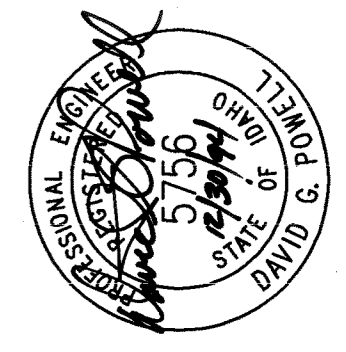
PREPARED BY

**TOOTHMAN-ORTON ENGINEERING COMPANY**

1802 NORTH 33rd STREET  
BOISE, IDAHO 83702  
(208) 342-5511



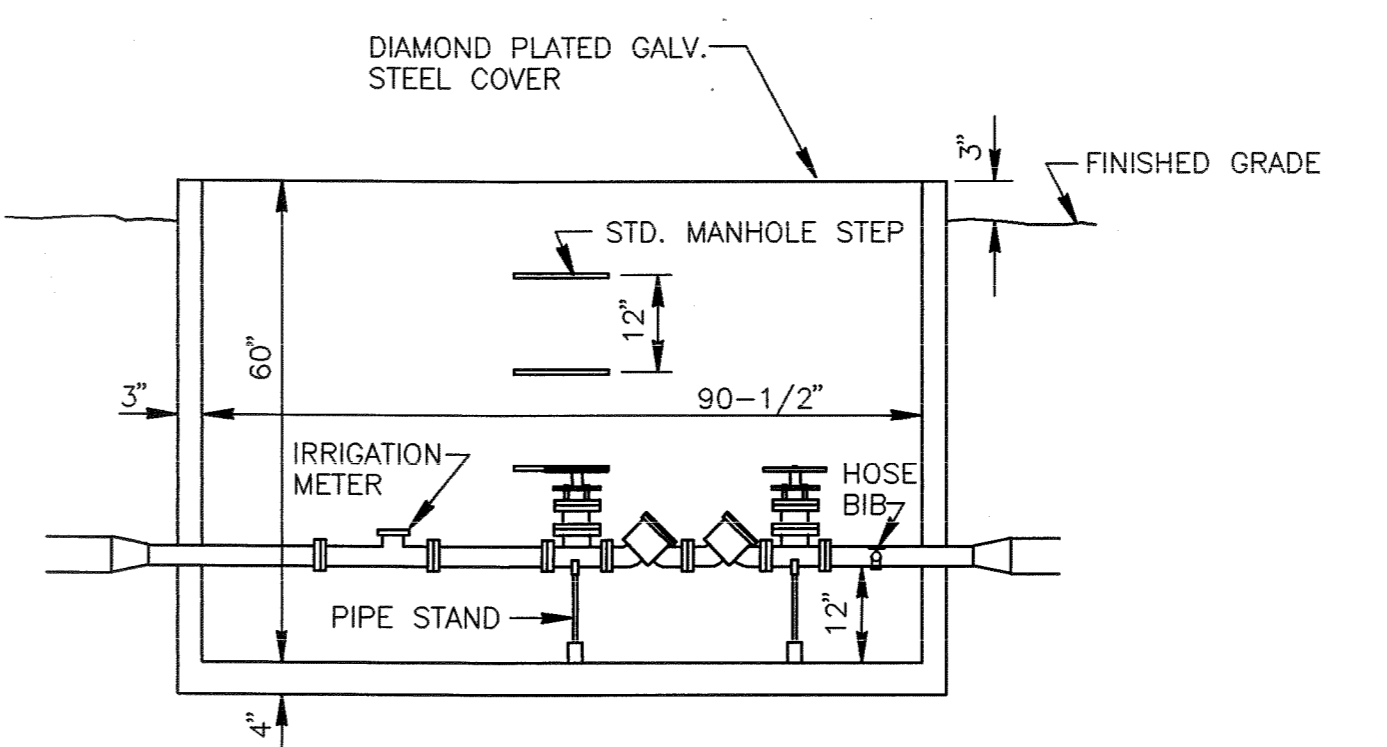
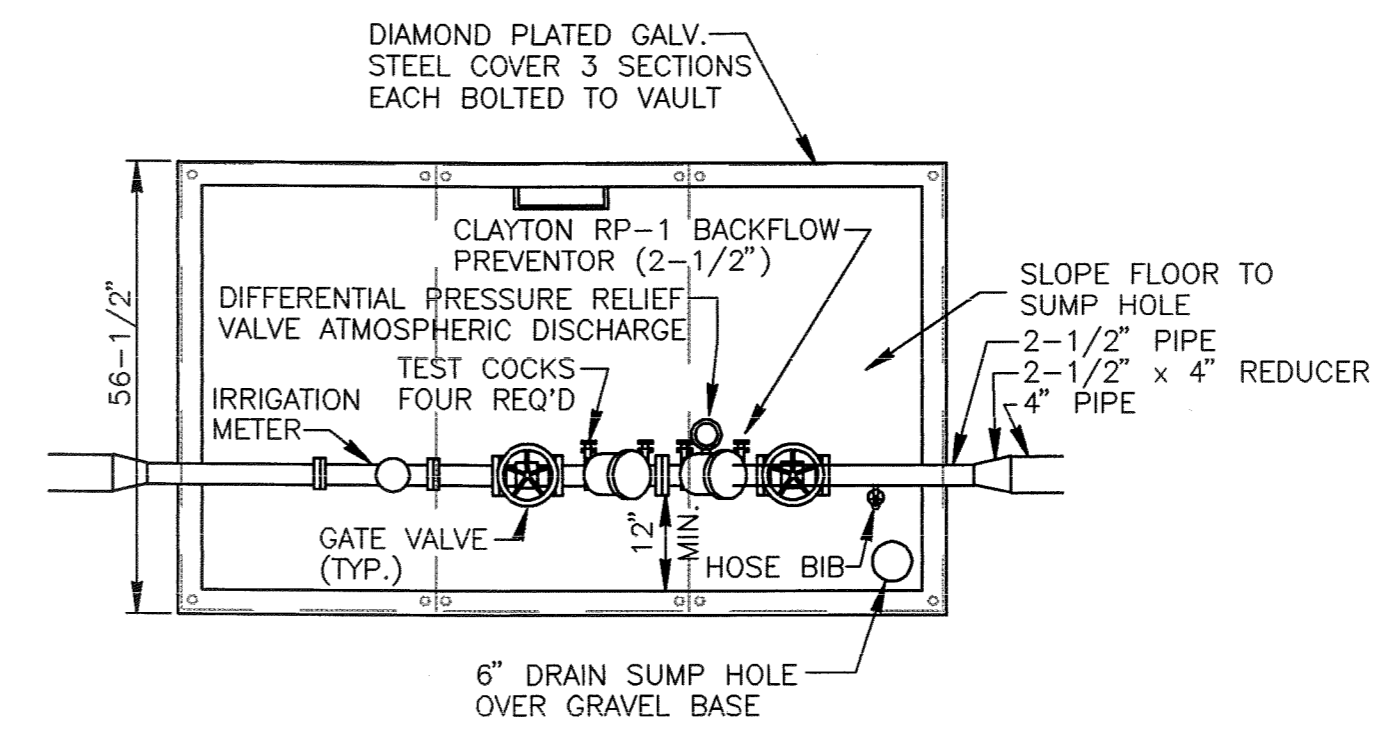
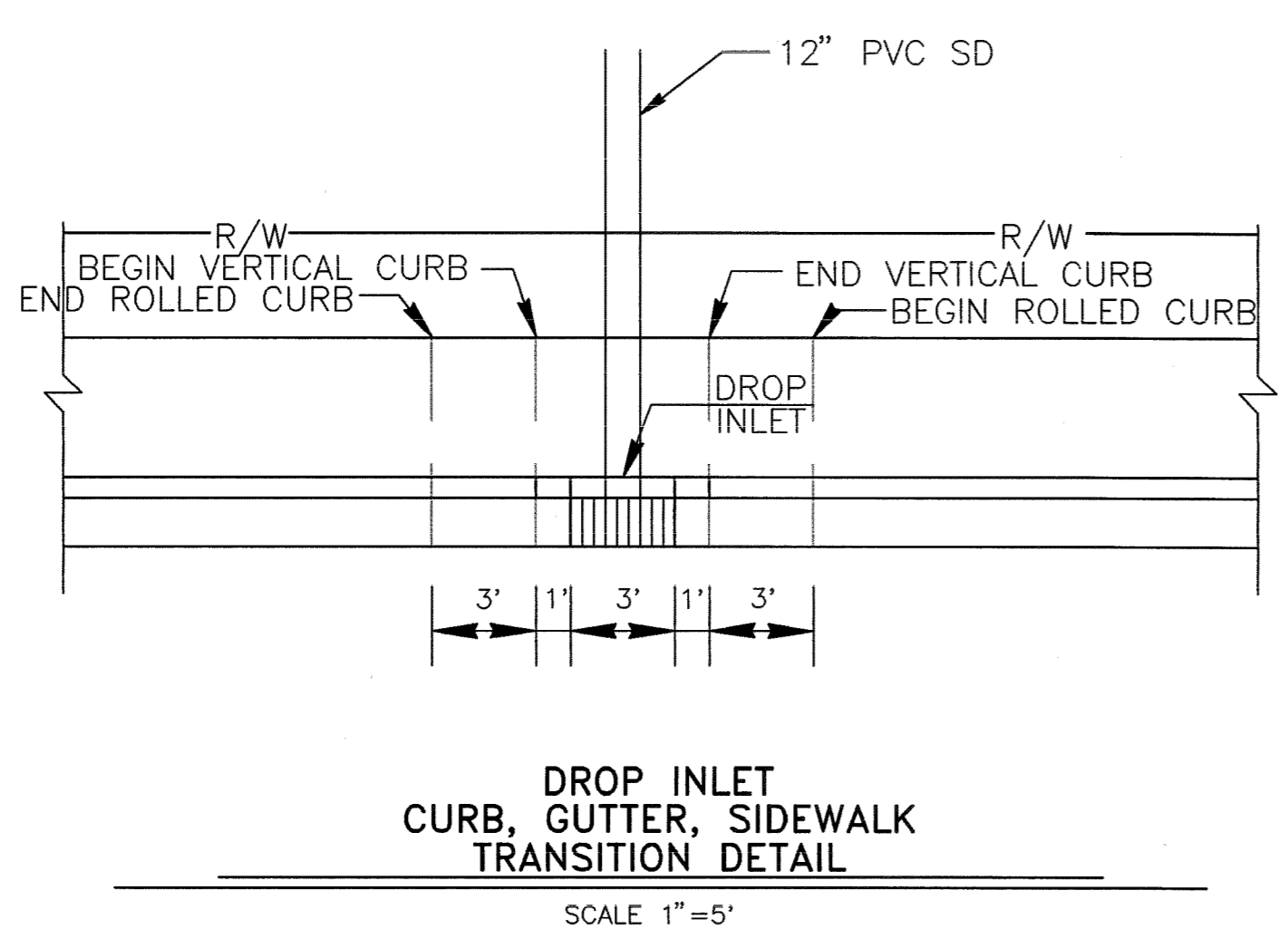
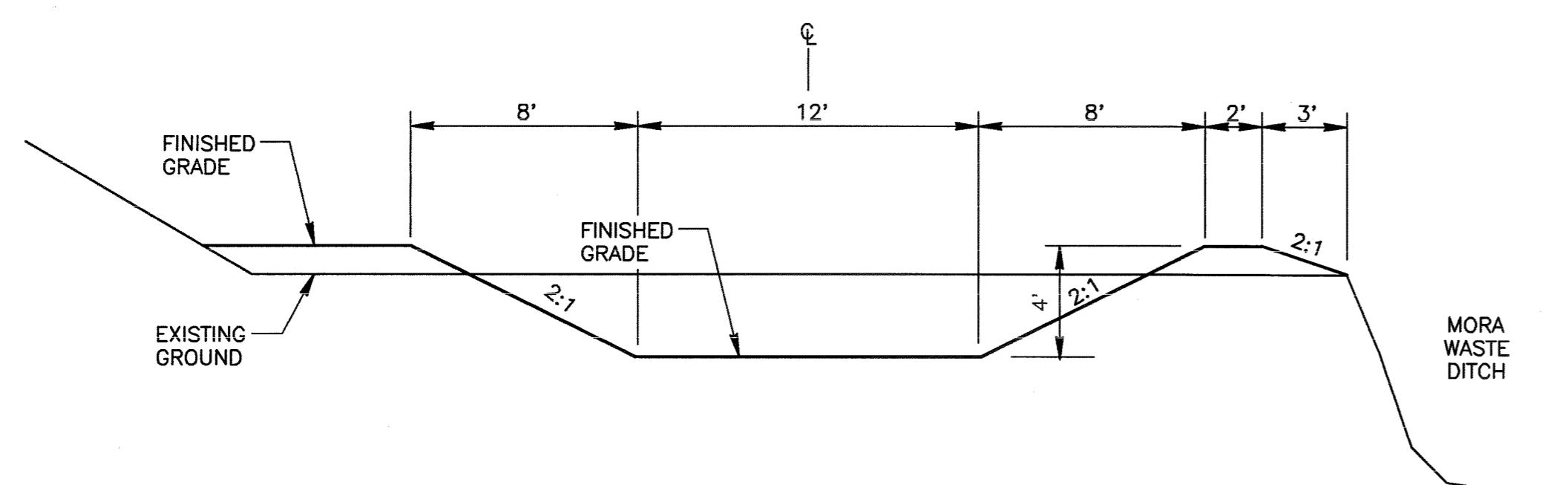
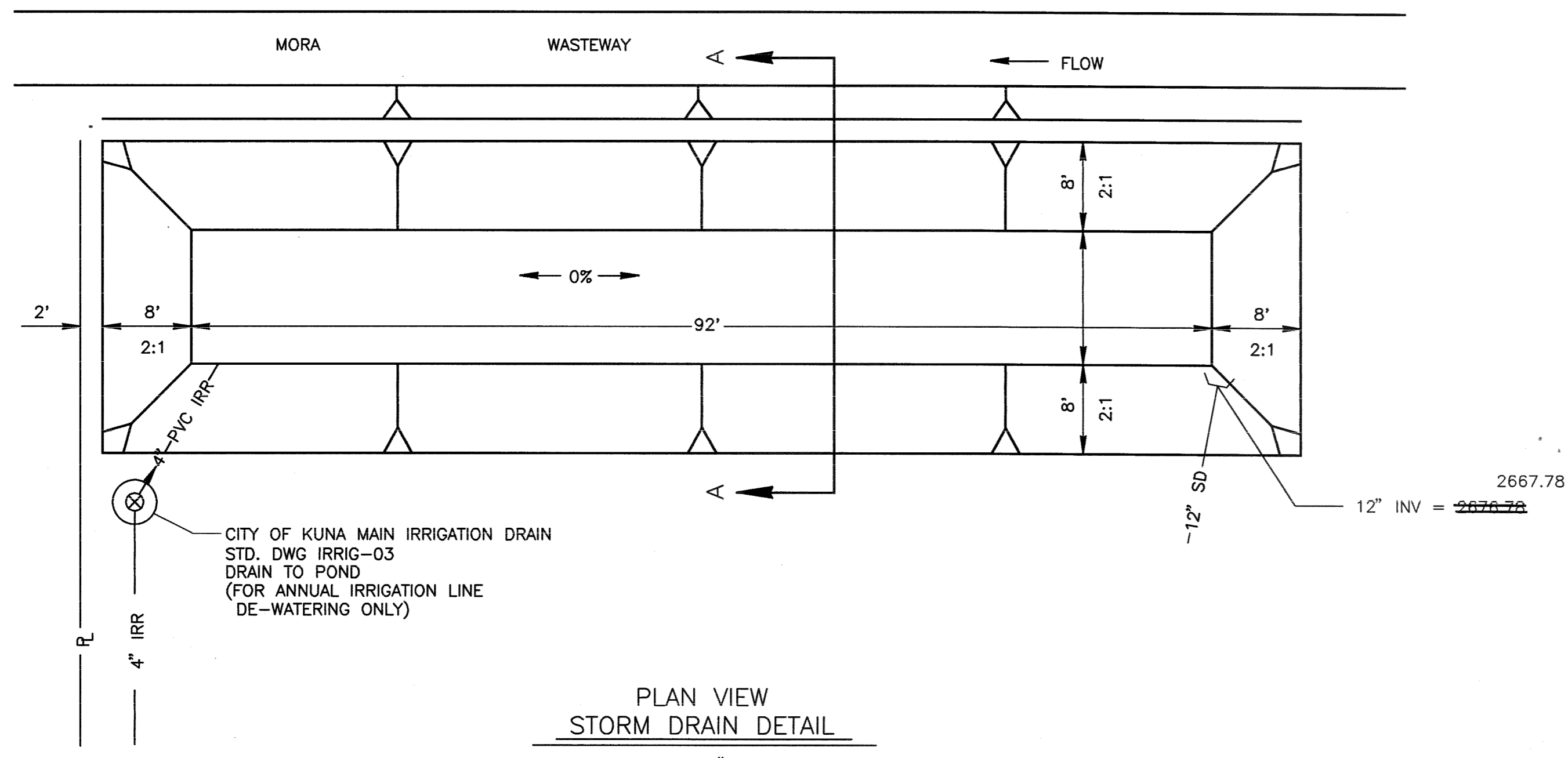




NO.	REVISIONS	DATE	BY	CHKD.	APP'D.
1	REVISED PER ACHD AND KUNA REVIEW LETTERS	5/24/94			
2	REVISED FOR AS BUILT CHANGES	12/30/94			

**TOOTHMAN-ORTON ENGINEERING COMPANY**  
 CONSULTING ENGINEERS, SURVEYORS AND PLANNERS  
 1802 NORTH 33RD STREET  
 PORTLAND, OREGON 97103  
 (208) 342-5514  
 (208) 342-5515  
 (208) 342-5516  
 (208) 342-5517  
 (208) 342-5518  
 (208) 342-5519  
 (208) 342-5520  
 (208) 342-5521  
 (208) 342-5522  
 (208) 342-5523  
 (208) 342-5524  
 (208) 342-5525  
 (208) 342-5526  
 (208) 342-5527  
 (208) 342-5528  
 (208) 342-5529  
 (208) 342-5530  
 (208) 342-5531  
 (208) 342-5532  
 (208) 342-5533  
 (208) 342-5534  
 (208) 342-5535  
 (208) 342-5536  
 (208) 342-5537  
 (208) 342-5538  
 (208) 342-5539  
 (208) 342-5540  
 (208) 342-5541  
 (208) 342-5542  
 (208) 342-5543  
 (208) 342-5544  
 (208) 342-5545  
 (208) 342-5546  
 (208) 342-5547  
 (208) 342-5548  
 (208) 342-5549  
 (208) 342-5550  
 (208) 342-5551  
 (208) 342-5552  
 (208) 342-5553  
 (208) 342-5554  
 (208) 342-5555  
 (208) 342-5556  
 (208) 342-5557  
 (208) 342-5558  
 (208) 342-5559  
 (208) 342-5560  
 (208) 342-5561  
 (208) 342-5562  
 (208) 342-5563  
 (208) 342-5564  
 (208) 342-5565  
 (208) 342-5566  
 (208) 342-5567  
 (208) 342-5568  
 (208) 342-5569  
 (208) 342-5570  
 (208) 342-5571  
 (208) 342-5572  
 (208) 342-5573  
 (208) 342-5574  
 (208) 342-5575  
 (208) 342-5576  
 (208) 342-5577  
 (208) 342-5578  
 (208) 342-5579  
 (208) 342-5580  
 (208) 342-5581  
 (208) 342-5582  
 (208) 342-5583  
 (208) 342-5584  
 (208) 342-5585  
 (208) 342-5586  
 (208) 342-5587  
 (208) 342-5588  
 (208) 342-5589  
 (208) 342-5590  
 (208) 342-5591  
 (208) 342-5592  
 (208) 342-5593  
 (208) 342-5594  
 (208) 342-5595  
 (208) 342-5596  
 (208) 342-5597  
 (208) 342-5598  
 (208) 342-5599  
 (208) 342-5600

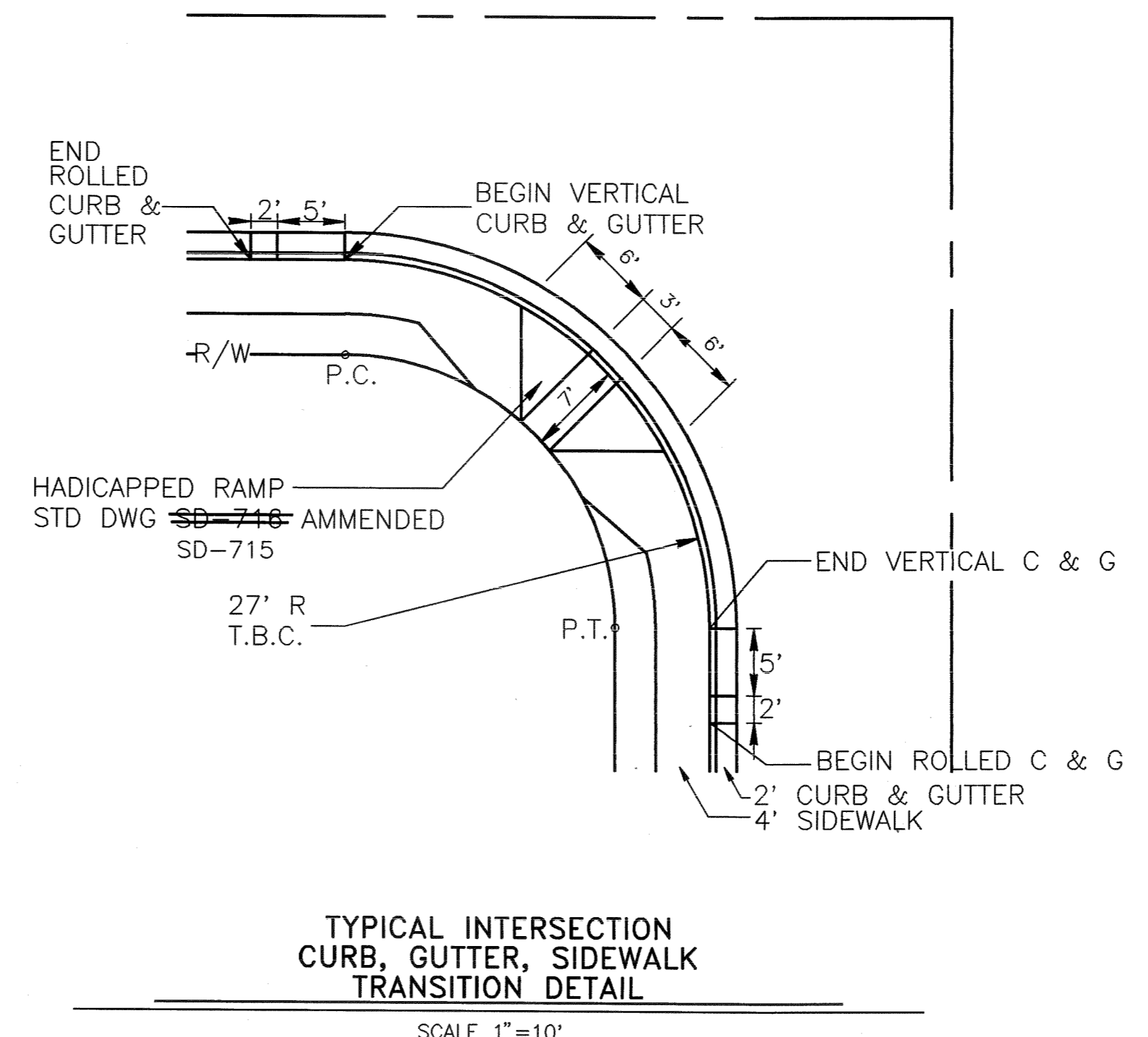
**ASHWOOD MANOR**  
 MISCELLANEOUS DETAILS  
 DATE: APRIL 21, 1994  
 PROJECT: 94015  
**SHEET 4 OF 4**



CONCRETE VAULT MAY BE PRECAST OR POURED IN PLACE. ACCESS SHALL BE 24 INCH DIA. CAST IRON FRAME AND LID. SHOP DRAWING SHALL BE SUBMITTED TO THE ENGINEER AND APPROVED PRIOR TO INSTALLATION.

**IRRIGATION BACKFLOW PREVENTION AND METERING VAULT**

N.T.S.



**TYPICAL INTERSECTION CURB, GUTTER, SIDEWALK TRANSITION DETAIL**

SCALE 1"=10'

**RECORD DRAWINGS**

This record drawing has been prepared, in part based upon information furnished by others. While this information is believed to be reliable, the DESIGN PROFESSIONAL cannot assure its accuracy, and thus is not responsible for the accuracy of this record drawing or for any errors or omissions which may have been incorporated into it as a result. Those relying on this record document are advised to obtain independent verification of its accuracy before applying it for any purpose.

Date: 30-DEC-94  
 TOOTHMAN-ORTON ENGINEERING CO.